

Michael Kennedy

Foreword by Jack Dangermond

Afterword by Michael F. Goodchild

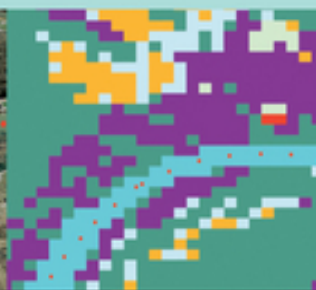
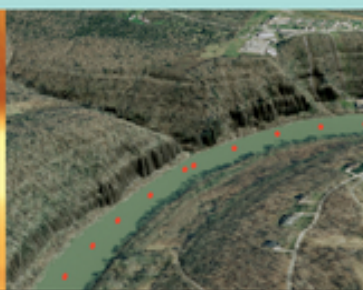
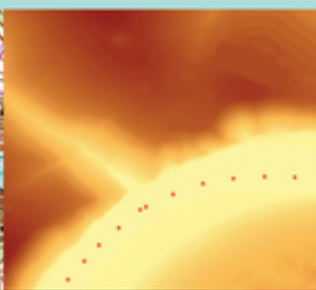
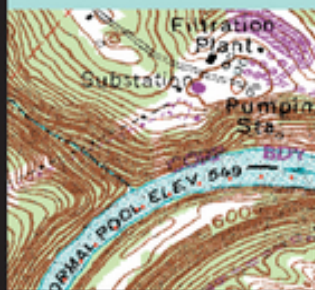


INCLUDES
DVD

Introducing Geographic Information Systems with ArcGIS®

Third
Edition

A WORKBOOK APPROACH TO LEARNING GIS



Contents

[Foreword](#)

[Preface](#)

[Preface to First Edition](#)

[Introduction](#)

[Part I: Basic Concepts of GIS](#)

[Chapter 1: Some Concepts That Underpin GIS](#)

[You Ask: "What Is GIS About?"](#)

[And So You Ask *Again*: "What Is GIS About?"](#)

[More of What GIS Is About](#)

[Next Steps: Seemingly Independent Things You Need to Know](#)

[Determining Where Something Is: Coordinate Systems](#)

[Determining Where Something Is: Latitude and Longitude](#)

[Geodesy, Coordinate Systems, Geographic Projections, and Scale](#)

[Projected Coordinate Systems](#)
[Geographic vs. Projected Coordinates:
A Comparison](#)
[Two Projected Coordinate Systems:
UTM and State Plane](#)
[Physical Dimensionality](#)
[Global Positioning Systems](#)
[Remote Sensing](#)
[Relational Databases](#)
[Searching \(and Indexing\) in General](#)
[Another Definition of GIS](#)
[Computer Software: In General](#)

[Step-by-Step](#)

[Understanding the File Structure for
the Exercises](#)
[Anatomy of the ArcCatalog Window](#)
[Setting Some Options](#)
[The Catalog Tree](#)
[Connecting to a Folder](#)
[The Toolbars and the Status Bar](#)
[An Optional Step](#)
[Exploring Basic GIS Data Storage
Models](#)

[Copying Data over to Your Personal Folder](#)

[Examining the Table](#)

[Deriving Information from the Table](#)

[Sorting the Records](#)

[Finding Values in a Table](#)

[Identifying Geographic Features and Coordinates](#)

[Looking at GeoGraphics](#)

[A First Look at Metadata](#)

[Using ArcCatalog to Place Data in ArcMap](#)

[Using the Area on the Disk for Your Own Work](#)

[Copying Data over to Your Personal IGIS Folder](#)

[Searching for GIS Data](#)

[Exploring Soils](#)

[But Something Is Missing](#)

[Is the Newly Found Data Applicable?](#)

[Making a Personal Geodatabase](#)

[Feature Class from a Coverage](#)

[Looking at the Landcover Personal Geodatabase Feature Class](#)

[Further Examining the Wildcat Boat Facility Area Data Sets](#)

[Seeing the Results of the Join](#)

[A Button for Instant Help: What's This? \(for ArcGIS Desktop version 10.0 only\)](#)

[Getting Instant Help for a Tool or Command \(for ArcGIS Desktop version 10.1\)](#)

[The Help System and Documentation](#)

[ArcGIS Help across the Internet](#)

[What's Next?](#)

[Chapter 2: Characteristics and Examples of Spatial Data](#)

[The Original Form of Spatial Data: Maps](#)

[Moving Spatial Data from Maps to Computers: Forces for Change](#)

[Spatial Data](#)

[Limiting the Scope](#)

[Spatial Data for Decision Making](#)

[Sets of Spatial Data: The Database](#)

[Spatial Databases: Inherent Difficulties](#)

[Information Systems](#)

Uses for a Geographic Information System

Step-by-Step

The Basic Difference between ArcCatalog and ArcMap

Exploring Data from the NAVSTAR Global Positioning System (GPS).

Preliminaries

Seeing the GPS File in ArcMap

Looking at the GPS Track in the Context of a Variety of GIS Data

A Potpourri of Types of Geographic Data

Displaying Layers from Vector-Based Datasets

Housekeeping: Saving and Restoring a Map

Selecting: Both Map Data and Attribute Data

Using the Measure Tool and the Identify Tool

County Boundaries and Polygons TIGER/Line Files

[The Table of Contents: Display vs. Source vs. Selection](#)
[Digital Raster Graphics and Cell-Based Files](#)
[A Look \(Optional\) at How DRG Color Values Are Put Together](#)
[Experimenting with Different Ways of Seeing Data](#)
[Digital Orthophotos](#)
[More TIGER/Line Files](#)
[Another Tie between Attributes and Geographics](#)
[More Housekeeping: Shutting Down and Restarting ArcMap](#)
[Digital Elevation Model Files](#)
[Comparing the DEM and the DRG Contour Line Files](#)
[TINs are Three-Dimensional Datasets Elevation Based on Massive Sets of Data: The Esri Terrain](#)
[The Summarizing Procedure](#)
[Some Geological Data](#)
[Rasters of Land Cover Data](#)
[You Are Not Alone \(Assuming you have an Internet connection\)](#)

[Next Steps on Your Own](#)
[The Next Chapter](#)

[Chapter 3: Products of a GIS: Maps and Other Information](#)

[GIS and Cartography—Compatibility?](#)
[Products of a Geographic Information System](#)

[Overall Requirements for Utility](#)

[Classification of GIS Products](#)

[Documenting Products](#)

[Thoughts on Different Types of Products](#)

[Don't Ignore Character-Based Information](#)

[Don't Hesitate to Sort Information](#)

[Consider Hard Copy](#)

[Consider Balance in Product Content](#)

[Elements of Product Design](#)

[Units, Projection, and Scale](#)

[Thoughts on Resolution and Scale](#)

[Making Sure There Is a Base Map](#)

[Measure of Quality Assurance](#)

[The Decision Maker-Product Interface](#)

[In Summary](#)

Step-by-Step

The Data View and the Layout View

Controlling Your View of the Map:

Zooming

Understanding the Panning and Other Controls

Adding Other Map Elements

Adding Data to Data Frames

A Summary of the Graphic Indicators

Tinkering with the Map—Scale Bars

Legends

Layer Files

Layer Packages

Styles

Adding and Using a Style

Reports

Charts and Graphs

Graphics

Making Graphics out of Geographic Features

Chapter 4: Structures for Storing Geographic Data

Why Is Spatial Data Analysis So Hard?

[How the Computer Aids Analyzing Spatial Data](#)

[Complexity of Spatial Data](#)

[Structures for Spatial Data](#)

[Storage Paradigms for Areal Data](#)

[Fundamental Bases of Geographic Data Mode](#)

[The Raster Data Model](#)

[Vector Data Model](#)

[A Multiplicity of “Storadigms”](#)

[Vector-Based Geographic Datasets—
Logical Construction](#)

[Zero-Dimensional Entities in a Two-Dimensional Field: Points](#)

[One-Dimensional Entities in a Two-Dimensional Field: Lines](#)

[Two-Dimensional Entities in a Two-Dimensional Field: Polygons](#)

[Three-Dimensional Entities in a Three-Dimensional Field: Triangles and Multipatches](#)

[Specific Esri Spatial Vector Data Storage Mechanisms](#)

[The Geodatabase Data Structure](#)

[Geodatabase Software](#)

[Polygons within Polygons—Perimeter and Area Calculations](#)

[Geodatabases—Layout in the Computer](#)

[Geodatabases—Logical Construction](#)

[Geodatabases—Feature Shape](#)

[Nested Polygons in Geodatabases](#)

[Geodatabases and Attributes](#)

[Objects—First Acquaintance](#)

[The Shapefile Data Structure](#)

[Shapefiles—Layout in the Computer](#)

[Summarizing Vector Dataset Features](#)

[Summary of Logical Structures of Vector-Based GIS Datasets](#)

[Raster-Based Geographic Data Sets—Logical Construction](#)

[Raster-Based Geographic Data Sets—Layout in the Computer](#)

[TINs](#)

[TIN-Based Geographic Data Sets—Layout in the Computer](#)

[Spatial Reference](#)

[Step-by-Step](#)

[More Help](#)

Specification of your Input Text File for the “Create Features from Text File”

Tool

Labeling Features

Making Polygons from Lines

Areas and Perimeters Examined

Labeling Features with Selected Attributes

Computers and Inexact Computation

Creating a New Topology

Specifying Which Feature Moves When Features Are Adjusted: Rank

Topology Rules

Validating Topology

A Warning: Changes Made through Topology Are Permanent

Chapter 5: Geographic and Attribute Data: Selection, Input, and Editing

Concerns about Finding and Collecting Data

Looking for Data on the Internet

Steps in Developing the Database

GPS and GIS

Anatomy of the Acronym: GPS

What Time Is It?

Step-by-Step

Looking at Reference Systems

Looking at Coordinate Systems

Using the Reference System to
Discover the Boundary Coordinates of
a State Plane Zone

Primary Lesson

A Plan for Digitizing and Transforming

Getting Started

Loading an Image File as a Layer in
ArcMap

Loading the New, Blank Shapefile into
ArcMap

Adding Line Features to a Shapefile by
Using the Editing Facility in ArcMap

Converting a Shapefile to a
Geodatabase Feature Class and Giving
It Real-World Coordinates

Converting the Shapefile to a
Geodatabase Feature Class

Moving the Foozit Court Feature Class
into the Real World

Preliminaries

[Making the Feature Class That Will Be the Object of the Digitization](#)

[Georeferencing](#)

[Moving the Sketch to UTM Zone](#)

[Digitizing the Line Boundaries of the Islands](#)

[Making Polygons of the Digitized Lines](#)

[Making Multipart Polygons](#)

[Five islands divided by county and agency](#)

[Merging Multipart Polygons](#)

[Making Copies of the Feature Class](#)

[Using "Clip" to Remove Overlaps from the Feature Class](#)

[Using Topology to Remove Overlaps from the Feature Class](#)

[The Concept of the Edit Sketch](#)

[Making Sketches with Snapping](#)

[Experimenting with Editing Polygons](#)

[Experimenting with Editor's Union](#)

[Experimenting with the Editor's Intersect](#)

[Experimenting with the Editor's Buffer Capabilities](#)

[Using Undo, Redo, Copy, and Cut](#)

[Working with Line Editing Again](#)
[Creating a 3-D Feature](#)
[Organization](#)
[Environment and Measurement](#)
[\(Spatial Data\)](#)
[Measurements \(Non-spatial Data\)](#)
[Recording Data](#)
[Team Assignments](#)
[Undertaking the Data Entry Process](#)
[Making a Table That Contains the](#)
[Coordinate Data](#)
[Making a Table That Contains the](#)
[Student Data](#)
[Populating the Student Info Table with](#)
[Data](#)
[Joining the Two Tables to Make a Single](#)
[Table](#)
[Seeing the Results of the Join](#)

[Part II: Spatial Analysis and](#) [Synthesis with Gis](#)

[Chapter 6: Analysis of GIS Data by Simple](#)
[Examination](#)
[Information](#)

Computer Hardware—What a Computer Does

Continuous and Discrete Phenomena

Some Implications of Discrete Representation for GIS

Scientific Notation, Numerical Significance, Accuracy, and Precision

Precision vs. Accuracy

Basic Statistics

Putting Values into Classes

Measurement Scales

Step-by-Step

Examining the Toolbars

Pointing at Records

Two Windows Are Available for Selecting

Selecting Records (and, Thereby, Features)

Looking at the Other Capabilities of the Options Menu

Selecting Features (and, Thereby, Records)

Quick Selection of Features

Selecting by Location

[Reviewing and Understanding Actions on the Table of Contents](#)

[Layers and the Data Frames](#)

[Changing Layer Properties](#)

[Thinking about Maps Again](#)

[Classification \(or Categorization\) and Symbolization](#)

[User Selection of Classes](#)

[A More Careful Look at Equal Intervals](#)

[Defined Interval](#)

[Quantiles](#)

[Standard Deviation](#)

[Natural Breaks](#)

[Normalization](#)

[Using Charts and Graphs](#)

[Making a Layout](#)

[Obtaining Data from the U.S. Bureau of the Census](#)

[Converting the Census Data](#)

[Spreadsheet to dBASEIV Format](#)

[Using TIGER-Based Street and Block Shapefiles from Esri](#)

[Assessing What We Have and What We Need to Solve the Problem](#)

[Converting the Relevant Files to Cartesian Coordinates](#)
[Finally](#)

[Chapter 7: Creating Spatial Feature Classes Based on Proximity, Overlay, and Attributes](#)

[Generating Features Based on Proximity: Buffering](#)

[Generating Features by Overlaying](#)
[Overlaying with Line and Point Feature Classes](#)

[Spatial Joins in General](#)

[Deriving Feature Classes by Selecting Attributes: Extraction](#)

[Step-by-Step](#)

[Using ArcToolbox to Make Buffer Zones around the Roads](#)

[Variable-Width Buffers](#)

[Make a New Feature Class from a Subset of Polygons: Extract](#)

[More Complex Queries—And's and Or's](#)

[Other Polygon Spatial Joins: Intersect and Identity](#)

[The Getrich Saga](#)

[Deriving Information by Combining Tables](#)

[Overlaying the Feature Classes](#)

[Create a Python Script from the Gold Model](#)

[Modify the Python Script from the Gold Model](#)

[Execute the Python Script](#)

[Understanding Dissolve](#)

[Making New Sites that Including the COST_HA Field](#)

[Considering the Site Eccentricity Criterion](#)

[Making a Model of the Wildcat Boat Solution](#)

[Chapter 8: Spatial Analysis Based on Raster Data Processing](#)

[*A Really Different Processing Paradigm*](#)

[Facts about Rasters](#)

[Coordinate Space](#)

[Rasters with Integer Cell Values](#)

[Rasters with Floating-Point Values](#)
[What Is Raster Storage and Processing Good For?](#)
[Rasters and Features](#)
[Rasters: Input, Computation, and Output](#)
[Where Raster Processing Shines: Cost Incurred Traveling over a Distance](#)
[Proximity Calculation with Rasters](#)
[Human Activity, Cost, and Distance](#)
[Euclidean Distances on the Raster](#)
[Euclidean Distance and the Spatial Analyst](#)
[Proving Pythagoras Right](#)
[Finding the Closest of Multiple Source Cells](#)
[Excluding Distances beyond a Certain Threshold](#)
[Other Factors That Influence Cost](#)
[The Cost Distance Mechanism](#)
[The Cost Distance Calculation](#)
[Path Calculation in Euclidean Distance and Cost Distance](#)
[Understanding How Total Costs Are Calculated](#)

[Getting More Information: Paths and Allocations](#)

[Direction and Allocation Rasters for Euclidean Distance](#)

[Direction and Allocation Rasters for Cost Distance](#)

[A Major Application of Raster Processing: Hydrology](#)

[Basic Surface Hydrology](#)

[Basic Surface Hydrology Concepts](#)

[Calculating Flow Direction](#)

[The Ultimate Destination of Water Is Off the Raster Area](#)

[Flow Accumulation: Drainage](#)

[Delineation and Rainfall Volume](#)

[Nonuniform Rainfall](#)

[Calculating the Length of a Potential Linear Water Body](#)

[Assigning Identities to Streams](#)

[Vector vs. Raster Representation](#)

[Assigning Orders to Stream Links](#)

[Watersheds and Pour Points](#)

[Step-by-Step](#)

[The Raster Calculator—Integer Rasters](#)

[Arithmetic Calculation](#)

[Boolean Operations](#)

[Floating-Point Rasters](#)

[Setting the General and Raster Environment](#)

[Converting Features to Rasters](#)

[Creating Rasters with Linear Features](#)

[Buffering with Spatial Analyst \(Maybe\)](#)

[Buffering—Plan B](#)

[Reclassifying the Data](#)

[Adding the Rasters with the Raster Calculator](#)

[Converting Zones to Regions to Find Individual Sites](#)

[Points and Density](#)

[Thiessen, Dirichlet, Voronoi \(and, of course, Decartes\)](#)

[Making a Raster Showing Straight-Line Distances to a Single Place](#)

[Examining Many Source Cells and the Capping Distance](#)

[Developing a Raster with Cost Distance](#)

[Creating Direction and Allocation Rasters](#)

Using Cost Distance to Make Direction and Allocation Rasters

Calculating a Least-Cost Path from “A” to “B”

Setting Things Up

Preparing to Create a Cost Surface

Building a Cost Surface

Improving the Understandability of the Map

Examining the Surface with Various Spatial Analyst and 3D Tools

Determining the Stream Channels

Calculating Stream Order

Numbering Each Stream Individually

Identifying Basins

Finding Pollution Culprits

Chapter 9: Other Dimensions, Other Tools, Other Solutions

Two Different Third Dimensions: The Temporal and the Vertical Spatial

The Third Spatial Dimension

3-D: 2-D (Spatial) Plus 1-D (Spatial).

ArcScene

[ArcGlobe](#)

[The Third Spatial Dimension](#)

[An \(Almost\) New Software Package: ArcScene](#)

[ArcScene](#)

[What's 3-D and What's Not](#)

[Viewing 3-D Data with Animation](#)

[Making a TIN and Other 3-D](#)

[Representations of Elevation](#)

[Creating DEM files with Kriging](#)

[Creating a Map of Contour Lines](#)

[Two-and-a-Half Dimensions \(2.5-D\):](#)

[Calculating Volumes](#)

[Calculating a Volume with ArcGIS](#)

[Other Neat Stuff You Can Do with 3D](#)

[Analyst: Viewshed and Hillshade](#)

[A Closer Look at ArcGlobe and Adding Data to It](#)

[Making a Terrain](#)

[The Time Dimension: OVERVIEW](#)

[3-D: 2-D \(Spatial\) Plus 1-D \(Temporal\)](#)

[The Time Dimension: STEP-BY-STEP](#)

[Sliding through Time—Seeing Changes in Features at Intervals](#)

[Address Geocoding: OVERVIEW](#)

[A Second Fundamental Way of Defining Location](#)

[TIGER/Line Files](#)

[Precision of the Geographic Coordinates in TIGER Files](#)

[Address Locators](#)

[Address Geocoding: STEP-BY-STEP](#)

[Finding the Geographic Position of an Address “Manually”](#)

[Making an Address Locator](#)

[Finding the Geographic Position of an Address “Automatically”](#)

[TIGER Files and ZIP Codes](#)

[More to Know—More Information Available](#)

[Analysis of Networks: Overview](#)

[Analysis of Networks: Step-by-step](#)

[Finding the Shortest Route to a Facility](#)

[Allocating Territories to Facilities](#)

[Linear Referencing: Overview](#)

[Linear Referencing: STEP-BY-STEP](#)

[Intersecting Route Events](#)

[What's Not Covered Here](#)

[Afterword: From Systems to Science by
Michael Goodchild](#)

[Index](#)

[Notes](#)

[Download CD/DVD Content](#)

About the Cover

The cover shows six images of the same geographic area, demonstrating various GIS data formats, depicting both natural and human-made features. The scene is a river flowing through a canyon. North of the river is a water filtration plant. The top scene is a TIN (Triangulated Irregular Network) indicating the elevation of the surface. Across the bottom of the cover, left to right, the first two images are portions of (a) a DRG (Digital Raster Graphics) file digitized from a US Geological Survey 7.5 minute quadrangle and (b) a DEM (Digital Elevation Model). The last two images, left to right are (d) a raster-based (cell-based, grid-based) depiction of different types of land cover and (e) a DOQ (Digital Ortho Quadrangle), which is an aerial photograph that has been rectified so it can be used as a map. In the center at the bottom is (c) a three-dimensional view in which ArcGIS software was used to “drape” a DOQ over an elevation model. The red dots along the river depict points collected by a GPS (Global Positioning System) receiver on a boat moving along the river.

Introducing Geographic
Information Systems
with ArcGIS®
Third Edition

A Workbook Approach
to Learning GIS

Michael Kennedy

University of Kentucky

WILEY

Cover image: Courtesy of Michael Kennedy

Cover design: John Wiley & Sons, Inc.

This book is printed on acid-free paper.

Copyright © 2013 by John Wiley & Sons, Inc. All rights reserved

Published by John Wiley & Sons, Inc., Hoboken, New Jersey

Published simultaneously in Canada

No part of this publication may be reproduced, stored in a retrieval system, or transmitted in any form or by any means, electronic, mechanical, photocopying, recording, scanning, or otherwise, except as permitted under Section 107 or 108 of the 1976 United States Copyright Act, without either the prior written permission of the Publisher, or authorization through payment of the appropriate per-copy fee to the Copyright Clearance Center, 222 Rosewood Drive, Danvers, MA 01923, (978) 750-8400, fax (978) 646-8600, or on the web at www.copyright.com. Requests to the Publisher for permission should be addressed to the Permissions Department, John Wiley & Sons, Inc., 111 River Street, Hoboken, NJ 07030, (201) 748-6011, fax (201) 748-6008, or online at www.wiley.com/go/permissions.

Limit of Liability/Disclaimer of Warranty: While the publisher and author have used their best efforts in preparing this book, they make no representations or warranties with the respect to the accuracy or completeness of the contents of this book and

specifically disclaim any implied warranties of merchantability or fitness for a particular purpose. No warranty may be created or extended by sales representatives or written sales materials. The advice and strategies contained herein may not be suitable for your situation. You should consult with a professional where appropriate. Neither the publisher nor the author shall be liable for damages arising herefrom.

For general information about our other products and services, please contact our Customer Care Department within the United States at (800) 762-2974, outside the United States at (317) 572-3993 or fax (317) 572-4002.

Wiley publishes in a variety of print and electronic formats and by print-on-demand. Some material included with standard print versions of this book may not be included in e-books or in print-on-demand. If this book refers to media such as a CD or DVD that is not included in the version you purchased, you may download this material at <http://booksupport.wiley.com>. For more information about Wiley products, visit www.wiley.com.

ISBN 978-1-118-15980-4; ISBN 978-1-118-33034-0 (ebk); ISBN 978-1-118-33103-3 (ebk);

ISBN 978-1-118-33318-1 (ebk); ISBN 978-1-118-51050-6 (ebk); ISBN 978-1-118-51056-8 (ebk)