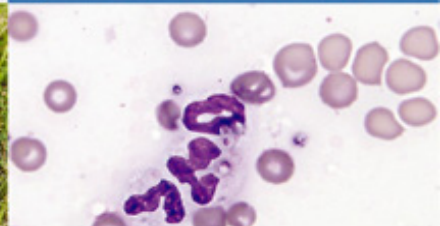
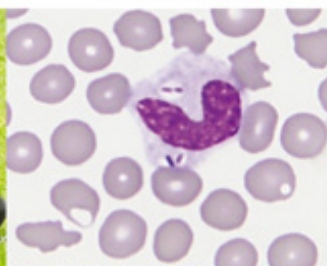


SECOND EDITION

# VETERINARY HEMATOLOGY AND CLINICAL CHEMISTRY



MARY ANNA THRALL, GLADE WEISER,  
ROBIN W. ALLISON, AND TERRY W. CAMPBELL

 WILEY-BLACKWELL



# Table of Contents

[Cover](#)

[Title page](#)

[Copyright page](#)

[Dedication](#)

[Contributors](#)

[Preface](#)

[Audience](#)

[Organization](#)

[Revisions and additions](#)

[Preface to the First Edition](#)

[Audience](#)

[Organization](#)

[Unique art program](#)

[Author team](#)

[I: General Principles of Laboratory  
Testing and Diagnosis](#)

[1 Laboratory Technology for Veterinary  
Medicine](#)

Hematologic techniques  
Chemistry techniques

## 2 Sample Collection, Processing, and Analysis of Laboratory Service Options

Sample collection and processing  
Analysis of diagnostic service implementation options  
Factors to consider when committing to in-house testing  
Factors to consider when selecting external laboratory services

## 3 Perspectives in Laboratory Data Interpretation and Disease Diagnosis

Introduction  
Reference interval background  
Sensitivity, specificity, and predictive values  
Quality control  
Common factors that introduce error in laboratory values  
Approach to interpreting laboratory data

## 4 Immunodiagnosics: Current Use and Future Trends in Veterinary Medicine

Introduction  
Antibody structure  
Generation of antibodies used in immunoassays  
Immunoassay formats

[Factors influencing immunoassay design](#)  
[Factors influencing immunoassay performance](#)  
[Future trends for use of immunodiagnostics in veterinary medicine](#)

## [II: Hematology of Common Domestic Species](#)

### [5 Erythrocyte Morphology](#)

[Erythrocyte color](#)  
[Erythrocyte size](#)  
[Erythrocyte shape](#)  
[Structures in or on erythrocytes](#)  
[Erythrocyte arrangement on blood films](#)

### [6 Classification of and Diagnostic Approach to Anemia](#)

[Classification of anemia](#)  
[Diagnostic approach](#)  
[Summary](#)

### [7 Nonregenerative Anemia](#)

[Aplastic anemia \(aplastic pancytopenia\)](#)  
[Pure red cell aplasia](#)  
[Red cell hypoplasia](#)

### [8 Regenerative Anemia](#)

[Blood loss](#)

Blood destruction (intravascular or extravascular hemolysis).

## 9 Classification of and Diagnostic Approach to Polycythemia

Relative polycythemia

Absolute polycythemia

Clinical findings

Diagnostic approach

Therapy

## 10 Introduction to Leukocytes and the Leukogram

Common blood leukocytes: General functions and morphology

Reference values: The normal leukogram

## 11 Neutrophil Production, Trafficking, and Kinetics

Production of granulocytes

Maturation and orderly production

Neutrophil pools and trafficking

Growth factors and regulation of production and blood concentration

Neutrophil kinetics

## 12 Interpretation of Leukocyte Responses in Disease

Terminology of abnormal leukocyte concentration patterns

Acquired changes in leukocyte morphology  
neutrophil toxic change

Inherited abnormalities of leukocyte morphology and function

Interpretation of leukocyte responses

## 13 Molecular Diagnostics of Hematologic Malignancies

Clonality

Detection of oncogenes

Uses of molecular diagnostics in research

Flow cytometry

Immunocytochemistry and cytochemistry

Summary

## 14 Laboratory Evaluation of Bone Marrow

Technique

Cells encountered in bone marrow films

Cytochemistry and immunophenotyping

Evaluation and interpretation of bone marrow films

Stem cell disorders of marrow

Neoplastic disorders involving bone marrow other than lymphoproliferative or myeloproliferative disorders

## 15 Lymphoproliferative Disorders and Myeloid Neoplasms

Overview of myeloproliferative and lymphoproliferative disorders (leukemia).

Myeloid neoplasms

Myelodysplastic syndromes

Overview of acute myeloid leukemias and myeloproliferative neoplasms

Classification of acute myeloid leukemias

Chronic myeloproliferative neoplasms

Lymphoproliferative disorders

## 16 Diagnosis of Disorders of Hemostasis

Overview of hemostasis

Evaluation of the bleeding patient

Commonly encountered disorders of hemostasis

Conclusion

Appendix 16.1

## 17 Principles of Blood Transfusion and Crossmatching

Blood groups (blood types).

Transfusion therapy

Typing blood

Crossmatching blood

Appendix 17.1

# III: Hematology of Common Nondomestic Mammals, Birds, Reptiles, Fish, and Amphibians

## 18 Mammalian Hematology: Laboratory Animals and Miscellaneous Species

Blood collection and handling

General hematologic features of small mammals

Hematologic features of rodents

## 19 Hematology of Birds

Collection and handling of blood samples

Erythrocytes

Leukocytes

Thrombocytes and hemostasis

Blood parasites

Hematopoiesis

Hematopoietic tissues other than bone marrow

## 20 Hematology of Reptiles

Blood collection and handling

Erythrocytes

Leukocytes

Thrombocytes and hemostasis

Blood parasites

Hematopoiesis

## 21 Hematology of Fish



Blood collection and handling  
Erythrocytes  
Leukocytes  
Thrombocytes and hemostasis  
Blood parasites  
Viral inclusions  
Hematopoiesis

## 22 Hematology of Amphibians

Collection and handling of blood  
Erythrocytes  
Leukocytes  
Thrombocytes  
Blood parasites  
Hematopoiesis

## IV: Clinical Chemistry of Common Domestic Species

### 23 Laboratory Evaluation and Interpretation of the Urinary System

General  
Introduction and Case Examples  
Urine concentration  
Urinalysis  
Protein  
Glucose  
Ketones

[Bilirubin](#)

[Urobilinogen](#)

[Nitrites](#)

[Leukocytes](#)

[Urine specific gravity](#)

[Microscopic](#)

[Red blood cells](#)

[Leukocytes](#)

[Epithelial cells](#)

[Bacteria](#)

[Yeast and fungi](#)

[Parasites](#)

[Debris](#)

[Lipid](#)

[Casts](#)

[Crystals in Urine = Crystalluria \(see Appendix 23.1 for visual examples\)](#)

[Electrolyte abnormalities](#)

[Protein abnormalities](#)

[Other abnormalities](#)

[Diseases/Syndromes](#)

[Neoplasms](#)

[Definitions, glossary, and principles](#)

[Acknowledgments](#)

[Appendix 23.1](#)

## [24 Laboratory Evaluation of Electrolytes](#)

[Sodium](#)

[Chloride](#)

[Potassium](#)

[Anion gap](#)

[Calcium, phosphorus, and magnesium](#)

[Calcium](#)

[Phosphorus](#)

[Magnesium](#)

## [25 Laboratory Evaluation of Acid-Base Disorders](#)

[Introduction](#)

[Technical considerations](#)

[Physiologic considerations](#)

[Approach to interpretation of acid-base data](#)

[More advanced considerations](#)

## [26 Laboratory Evaluation of the Liver](#)

[Liver disease vs liver failure](#)

[Introduction to enzymology](#)

[Hepatocyte injury](#)

[Cholestasis](#)

[Liver function](#)

[Patterns of laboratory abnormalities for specific diseases](#)

[Summary](#)

## [27 Laboratory Evaluation of the Pancreas and Glucose Metabolism](#)

[The exocrine pancreas](#)

[The endocrine pancreas](#)

## 28 Laboratory Evaluation of Digestion and Intestinal Absorption

Introduction

Maldigestion and malabsorption in dogs and cats

Maldigestion and malabsorption in horses

Maldigestion and malabsorption in ruminants

Screening tests in veterinary practice

Tests in a reference laboratory

Other laboratory abnormalities associated with digestive system diseases

## 29 Laboratory Evaluation of Plasma and Serum Proteins

Classification of plasma proteins

Measurement of plasma and serum proteins

Abnormal protein concentrations

Appendix 29.1

Appendix 29.2

Appendix 29.3

Appendix 29.4

Appendix 29.5

Appendix 29.6

## 30 Laboratory Detection of Muscle Injury

Creatine kinase

Aspartate aminotransferase

Alanine aminotransferase

Lactate dehydrogenase

Cardiac troponins

Myoglobinemia and myoglobinuria

## 31 Laboratory Evaluation of Lipids

Dietary absorption of lipids

Lipids present in the blood

Measurement of lipids

Hyperlipidemias

Diabetes mellitus

Ketosis and ketoacidosis

Hypolipidemias

## 32 Laboratory Evaluation of the Thyroid, Adrenal, and Pituitary Glands

Clinical endocrinology

Hyperthyroidism

Hypothyroidism

Adrenal gland disorders

Pituitary disorders

Diabetes insipidus

Pituitary dwarfism and acromegaly

## 33 Parathyroid Glands and Calcium and Phosphorus Metabolic Pathology

General introduction

Background on relevant laboratory tests

Primary parathyroid disorders

Disorders of calcium and phosphorus metabolism

Hypercalcemia

# V: Clinical Chemistry of Common Nondomestic Mammals, Birds, Reptiles, Fish, and Amphibians

## 34 Chemical Chemistry of Mammals: Laboratory Animals and Miscellaneous Species

Sample collection and handling

Rodents

Rabbits (*Oryctolagus cuniculus*)

Ferrets (*Mustelus putorius furo*)

Less common small mammal pets

## 35 Clinical Chemistry of Birds

Sample collection and handling

Reference intervals and decision levels

Laboratory evaluation of the avian kidney

Electrolytes and acid/base balance

Calcium

Phosphorus

Acid-base balance

Laboratory evaluation of the avian liver

Laboratory evaluation of plasma and serum proteins

Laboratory evaluation of glucose metabolism

Laboratory detection of exocrine pancreatic insufficiency

Laboratory detection of muscle injury

Laboratory evaluation of endocrine disorders

## 36 Clinical Chemistry of Reptiles

Sample collection and handling

Laboratory evaluation of reptilian kidneys

Electrolytes and acid base

Calcium and phosphorus

Laboratory evaluation of the reptilian liver

Laboratory evaluation of plasma and serum proteins

Laboratory evaluation of serum and plasma lipids

Laboratory evaluation of glucose metabolism

Laboratory detection of muscle injury

Laboratory evaluation of endocrine disorders

## 37 Clinical Chemistry of Fish and Amphibians

Fish

Sample collection and handling

Laboratory evaluation of the piscine kidney

Laboratory evaluation of electrolytes and acid/base balance

Calcium

Magnesium

Acid-base balance

Laboratory evaluation of branchial epithelium

Ammonia

Laboratory evaluation of the piscine liver

Laboratory evaluation of endocrine disorders

[Thyroid](#)

[Adrenal \(interrenal tissue\)](#)

[Amphibians](#)

## [VI: Clinical Case Presentations](#)

### [Clinical Case Presentations](#)

[Introduction](#)

[Clinical Case Presentations: Contents](#)

[Perspective on use of this section](#)

[List of abbreviations](#)

[Case 1](#)

[Signalment and History:](#)

[Interpretive discussion](#)

[Summary](#)

[Case 2](#)

[Signalment:](#)

[History:](#)

[Physical Examination:](#)

[Interpretive discussion](#)

[Summary](#)

[Case 3](#)

[Signalment and History:](#)

[Interpretive discussion](#)

[Summary](#)

[Case 4](#)

[Signalment and History:](#)

[Interpretive discussion](#)

[Summary](#)



Case 5

Signalment:

History:

Physical Examination:

Interpretive discussion

Summary

Case 6

Signalment and History:

Interpretive discussion

Summary

Case 7

Signalment

History

Physical examination

Interpretive discussion

Summary

Case 8

Signalment:

History:

Physical examination:

Interpretive discussion

Abdominal fluid analysis

Summary

Case 9

Signalment:

History:

Physical examination:

Interpretive discussion

Summary

Case 10

Signalment and history:

Interpretive discussion

Summary

Case 11

Signalment:

History:

Physical examination:

Interpretive discussion

Summary

Case 12

Signalment

History

Physical examination

Interpretive discussion

Summary

Case 13

Signalment

History

Physical examination

Interpretive discussion

Summary

Case 14

Signalment

History

Physical exam

Serum protein electrophoresis tracing

Interpretive discussion

Summary

Case 15

Signalment:

History:

Physical examination:

Interpretative discussion

Summary

Case 16

Signalment:

History:

Physical examination:

Interpretative discussion

Summary

Case 17

Signalment:

History:

Physical examination:

Interpretive discussion

Summary

Case 18

Signalment:

History:

Physical examination:

Interpretive discussion

Summary

Case 19

Signalment:

History:

Physical examination:

Interpretive discussion

Summary

Case 20

Signalment:

History:

Physical examination:

Interpretive discussion

Summary

Case 21

Signalment:

History:

Physical examination:

Interpretive discussion

Summary

Case 22

Signalment:

History:

Physical examination:

Interpretive discussion

Summary

Case 23

Signalment:

History:

Physical examination:

Interpretive discussion

Summary

Case 24

Signalment:

History:

Physical examination:

[Interpretive discussion](#)

[Summary](#)

[Case 25](#)

[Signalment:](#)

[History:](#)

[Physical examination:](#)

[Interpretive discussion](#)

[Summary](#)

[Case 26](#)

[Signalment:](#)

[History:](#)

[Interpretive discussion](#)

[Summary](#)

[Case 27](#)

[Signalment:](#)

[History:](#)

[Physical Examination:](#)

[Interpretive discussion](#)

[Summary](#)

[Case 28](#)

[Signalment:](#)

[History:](#)

[Physical Examination:](#)

[Interpretive discussion](#)

[Summary](#)

[Case 29](#)

[Signalment:](#)

[History:](#)

[Physical examination:](#)

[Interpretive discussion](#)

[Summary](#)

[Case 30](#)

[Signalment:](#)

[History:](#)

[Physical examination:](#)

[Interpretive discussion](#)

[Summary](#)

[Case 31](#)

[Signalment:](#)

[History:](#)

[Physical examination:](#)

[Hematology:](#)

[Interpretive discussion](#)

[Summary](#)

[Case 32](#)

[Signalment:](#)

[History:](#)

[Physical examination:](#)

[Interpretive discussion](#)

[Summary and comment: Uroabdomen](#)

[Case 33](#)

[Signalment](#)

[History](#)

[Physical examination](#)

[Interpretive discussion](#)

[Summary](#)

[Case 34](#)

[Signalment:](#)

History:

Physical examination:

Interpretive discussion

Summary

Case 35

Signalment:

History:

Physical examination:

Interpretive discussion

Summary

Case 36

Signalment:

History:

Physical examination:

Interpretive discussion

Summary

Case 37

Signalment:

History:

Physical examination:

Interpretive discussion

Summary

Case 38

Signalment:

History:

Physical examination:

Interpretive discussion

Summary

Case 39

Signalment:

History:

Physical examination:

Interpretive discussion

Summary

Case 40

Signalment:

History:

Physical examination:

Interpretive discussion

Summary

Case 41

Signalment:

History:

Physical examination:

Interpretive discussion

Summary

Case 42

Signalment:

History:

Physical examination:

Hematology:

Interpretive discussion

Summary

Case 43

Signalment:

History:

Physical examination:

Interpretive discussion



Summary

Case 44

Signalment:

History:

Physical examination:

Interpretive discussion

Summary

Case 45

Signalment:

History:

Interpretive discussion

Summary

Case 46

Signalment:

History:

Interpretive discussion

Summary

Case 47

Signalment:

History:

Physical examination:

Interpretive discussion

Summary

Case 48

Signalment:

History:

Physical examination:

Interpretive discussion

Summary

Case 49

Signalment

History

Physical

Interpretive discussion

Summary

Case 50

Signalment:

History:

Physical examination:

Interpretive discussion

Summary

Case 51

Signalment:

History:

Physical Examination:

Interpretive discussion

Summary

Case 52

Signalment:

History:

Physical examination:

Interpretive discussion

Summary

Case 53

Signalment:

History:

Physical examination:

Interpretive discussion

[Summary](#)

[Case 54](#)

[Signalment:](#)

[History:](#)

[Physical examination:](#)

[Interpretive discussion](#)

[Summary](#)

[Case 55](#)

[Signalment](#)

[History](#)

[Physical examination](#)

[Interpretive discussion](#)

[Summary](#)

[Case 56](#)

[Signalment:](#)

[History:](#)

[Physical examination:](#)

[Interpretive discussion](#)

[Summary](#)

[Case 57](#)

[Signalment:](#)

[History:](#)

[Physical examination:](#)

[Interpretive discussion](#)

[Summary](#)

[Case 58](#)

[Signalment:](#)

[History:](#)

[Physical examination:](#)

[Interpretive discussion](#)

[Summary](#)

[Case 59](#)

[Signalment](#)

[History](#)

[Physical examination](#)

[Interpretive discussion](#)

[Summary](#)

[Case 60](#)

[Signalment](#)

[History](#)

[Physical](#)

[Interpretive discussion](#)

[Summary](#)

[Case 61](#)

[Signalment:](#)

[History:](#)

[Physical examination:](#)

[Interpretive discussion](#)

[Summary](#)

[Case 62](#)

[Signalment:](#)

[History:](#)

[Physical examination:](#)

[Interpretive discussion](#)

[Summary](#)

[Case 63](#)

[Signalment:](#)

[History:](#)

[Physical examination:](#)  
[Interpretive discussion](#)  
[Summary](#)

[Case 64](#)

[Signalment:](#)

[History:](#)

[Physical examination:](#)  
[Interpretive discussion](#)  
[Summary](#)

[Case 65](#)

[Signalment:](#)

[History:](#)

[Physical examination:](#)  
[Interpretive discussion](#)  
[Summary](#)

[Case 66](#)

[Signalment](#)

[History](#)

[Physical examination](#)  
[Interpretive discussion](#)  
[Summary](#)

[Case 67](#)

[Signalment:](#)

[History:](#)

[Physical examination:](#)  
[Interpretive discussion](#)  
[Summary](#)

[Case 68](#)

[Signalment:](#)

History:

Physical examination:

Interpretive discussion

Summary

Case 69

Signalment:

History:

Physical examination:

Interpretive discussion

Summary

Case 70

Signalment

History

Physical exam

Interpretive discussion

Summary

Case 71

Signalment:

History:

Physical examination:

Interpretive discussion

Summary

Case 72

Signalment

History

Physical examination

Interpretive discussion

Summary and follow-up

Comment