

Teach Yourself
VISUALLY[™]

Adobe[®]

Photoshop[®] CS6

The Fast and Easy Way to Learn



PS

Mike Wooldridge
Brianna Stuart



Photoshop® CS6



Mike Wooldridge
Brianna Stuart



John Wiley & Sons, Inc.

Teach Yourself VISUALLY™ Photoshop® CS6

Published by

John Wiley & Sons, Inc.

10475 Crosspoint Boulevard

Indianapolis, IN 46256

www.wiley.com

Published simultaneously in Canada

Copyright © 2012 by John Wiley & Sons, Inc., Indianapolis, Indiana

No part of this publication may be reproduced, stored in a retrieval system or transmitted in any form or by any means, electronic, mechanical, photocopying, recording, scanning or otherwise, except as permitted under Sections 107 or 108 of the 1976 United States Copyright Act, without either the prior written permission of the Publisher, or authorization through payment of the appropriate per-copy fee to the Copyright Clearance Center, 222 Rosewood Drive, Danvers, MA 01923, (978) 750-8400, fax (978) 646-8600. Requests to the Publisher for permission should be addressed to the Permissions Department, John Wiley & Sons, Inc., 111 River Street, Hoboken, NJ 07030, 201-748-6011, fax 201-748-6008, or online at www.wiley.com/go/permissions.

Wiley publishes in a variety of print and electronic formats and by print-on-demand. Some material included with standard print versions of this book may not be included in e-books or in print-on-demand. If this book refers to media such as a CD or DVD that is not included in the version you purchased, you may download this material at <http://booksupport.wiley.com>. For more information about Wiley products, visit www.wiley.com.

Library of Congress Control Number: 2012939588

ISBN 978-1-118-19667-0

Manufactured in the United States of America

10 9 8 7 6 5 4 3 2 1

Trademark Acknowledgments

Wiley, the Wiley logo, Visual, the Visual logo, Teach Yourself VISUALLY, Read Less - Learn More and related trade dress are trademarks or registered trademarks of John Wiley & Sons, Inc. and/or its affiliates. Photoshop is a registered trademark of Adobe Systems, Incorporated. All other trademarks are the property of their respective owners. John Wiley & Sons, Inc. is not associated with any product or vendor mentioned in this book.

LIMIT OF LIABILITY/DISCLAIMER OF WARRANTY: THE PUBLISHER AND THE AUTHOR MAKE NO REPRESENTATIONS OR WARRANTIES WITH RESPECT TO THE ACCURACY OR COMPLETENESS OF THE CONTENTS OF THIS WORK AND SPECIFICALLY DISCLAIM ALL WARRANTIES, INCLUDING WITHOUT LIMITATION WARRANTIES OF FITNESS FOR A PARTICULAR PURPOSE. NO WARRANTY MAY BE CREATED OR EXTENDED BY SALES OR PROMOTIONAL MATERIALS. THE ADVICE AND STRATEGIES CONTAINED HEREIN MAY NOT BE SUITABLE FOR EVERY SITUATION. THIS WORK IS SOLD WITH THE UNDERSTANDING THAT THE PUBLISHER IS NOT ENGAGED IN RENDERING LEGAL, ACCOUNTING, OR OTHER PROFESSIONAL SERVICES. IF PROFESSIONAL ASSISTANCE IS REQUIRED, THE SERVICES OF A COMPETENT PROFESSIONAL PERSON SHOULD BE SOUGHT. NEITHER THE PUBLISHER NOR THE AUTHOR SHALL BE LIABLE FOR DAMAGES ARISING HEREFROM. THE FACT THAT AN ORGANIZATION OR WEBSITE IS REFERRED TO IN THIS WORK AS A CITATION AND/OR A POTENTIAL SOURCE OF FURTHER INFORMATION DOES NOT MEAN THAT THE AUTHOR OR THE PUBLISHER ENDORSES THE INFORMATION THE ORGANIZATION OR WEBSITE MAY PROVIDE OR RECOMMENDATIONS IT MAY MAKE. FURTHER, READERS SHOULD BE AWARE THAT INTERNET WEBSITES LISTED IN THIS WORK MAY HAVE CHANGED OR DISAPPEARED BETWEEN WHEN THIS WORK WAS WRITTEN AND WHEN IT IS READ.

FOR PURPOSES OF ILLUSTRATING THE CONCEPTS AND TECHNIQUES DESCRIBED IN THIS BOOK, THE AUTHOR HAS CREATED VARIOUS NAMES, COMPANY NAMES, MAILING, E-MAIL AND INTERNET ADDRESSES, PHONE AND FAX NUMBERS AND SIMILAR INFORMATION, ALL OF WHICH ARE FICTITIOUS. ANY RESEMBLANCE OF THESE FICTITIOUS NAMES, ADDRESSES, PHONE AND FAX NUMBERS AND SIMILAR INFORMATION TO ANY ACTUAL PERSON, COMPANY AND/OR ORGANIZATION IS UNINTENTIONAL AND PURELY COINCIDENTAL.

Contact Us

For general information on our other products and services please contact our Customer Care Department within the U.S. at 877-762-2974, outside the U.S. at 317-572-3993 or fax 317-572-4002.

For technical support please visit www.wiley.com/techsupport.



WILEY | **Sales** | Contact Wiley at (877) 762-2974 or fax (317) 572-4002.

Credits

Senior Acquisitions Editor

Stephanie McComb

Project Editor

Terri Edwards

Technical Editor

Dennis Cohen

Copy Editor

Scott Tullis

Editorial Director

Robyn Siesky

Business Manager

Amy Knies

Senior Marketing Manager

Sandy Smith

Vice President and Executive Group Publisher

Richard Swadley

Vice President and Executive Publisher

Barry Pruett

Project Coordinator

Sheree Montgomery

Graphics and Production Specialists

Ronda David-Burroughs

Jennifer Mayberry

Jill Proll

Quality Control Technician

John Greenough

Proofreading and Indexing

Debbye Butler

Potomac Indexing, LLC

Vertical Websites Project Manager

Rich Graves

Vertical Websites Associate Producer

Rich Graves

About the Authors

Mike Wooldridge is a writer and web developer based in the San Francisco Bay Area. He has authored dozens of books for the Visual series. For more information about him and his books, visit www.wooldridge.net.

Brianna Stuart is an author and busy mom based in the Seattle area. She is also the author of *Teach Yourself Visually Photoshop Elements 10* and *Creating Web Pages Simplified*.

Authors' Acknowledgments

Mike and **Brianna** thank Terri Edwards, Scott Tullis, Dennis Cohen, and everyone else at Wiley for their help on this book. Mike dedicates this book to his wonderful wife and son, who also love digital photography. Brianna thanks her wonderful extended work family for their support and good humor, even when they are repeatedly subjected to her silly image editing hijinks. She dedicates this book, with lots of love and giggles, to the goofiest twins in the world: Beckett and Owain.

How to Use This Book

Who This Book Is For

This book is for the reader who has never used this particular technology or software application. It is also for readers who want to expand their knowledge.

The Conventions in This Book

1 Steps

This book uses a step-by-step format to guide you easily through each task. **Numbered steps** are actions you must do; **bulleted steps** clarify a point, step, or optional feature; and **indented steps** give you the result.

2 Notes

Notes give additional information — special conditions that may occur during an operation, a situation that you want to avoid, or a cross-reference to a related area of the book.

3 Icons and Buttons

Icons and buttons show you exactly what you need to click to perform a step.

4 Tips

Tips offer additional information, including warnings and shortcuts.

5 Bold

Bold type shows command names or options that you must click or text or numbers you must type.

6 Italics

Italic type introduces and defines a new term.

CHAPTER 12
Adding and Manipulating Type

Add Type in a Bounding Box

You can add type inside a *bounding box*, a rectangular container for text, to constrain where the type appears and how it wraps. Adding text in a bounding box is useful when you want to constrain where the text appears in your image and when line breaks occur. You can change the dimensions of the bounding box by clicking and dragging handles on the corners and edges.

The bounding box remains the same size if you change how your type is sized or styled. See “Change the Formatting of Type” for details about changing how your type appears.

Add Type in a Bounding Box

- 1 Click the **Type tool** (T).
- 2 Click and drag inside the image to define the bounding box.
- 3 Click and drag the handles (□) of the bounding box to adjust its dimensions.
- 4 Click and drag the center point (⊕) of the bounding box to move the box.
- 5 Use these menus to choose the formatting for the type to be added.

6 Type your text.

Your text appears inside the bounding box.

A line of text that hits the edge of the bounding box automatically wraps to the next line.

Photoshop also automatically adds hyphenation.

Note: You can turn off hyphenation in the Paragraph panel. See the tip below for more.

- 7 When you finish typing your text, click here (⏏) or press **Enter** (⏏+Return) on a Mac). The bounding box disappears.
- 8 The type is put on its own layer.
- 9 To make the box reappear in order to change its dimensions, click the **Type tool** (T) and then click the text.

TIP

How do I format paragraph text inside a bounding box? Follow these steps:

- 1 Click the **Type tool** (T).
- 2 Click the text inside the box.
- 3 Click **Window** and then **Paragraph**. The Paragraph panel opens.
- 4 Type values or click the various tools to control the alignment, indenting, and hyphenation of the text inside the bounding box.

You can also format paragraph text with type styles.

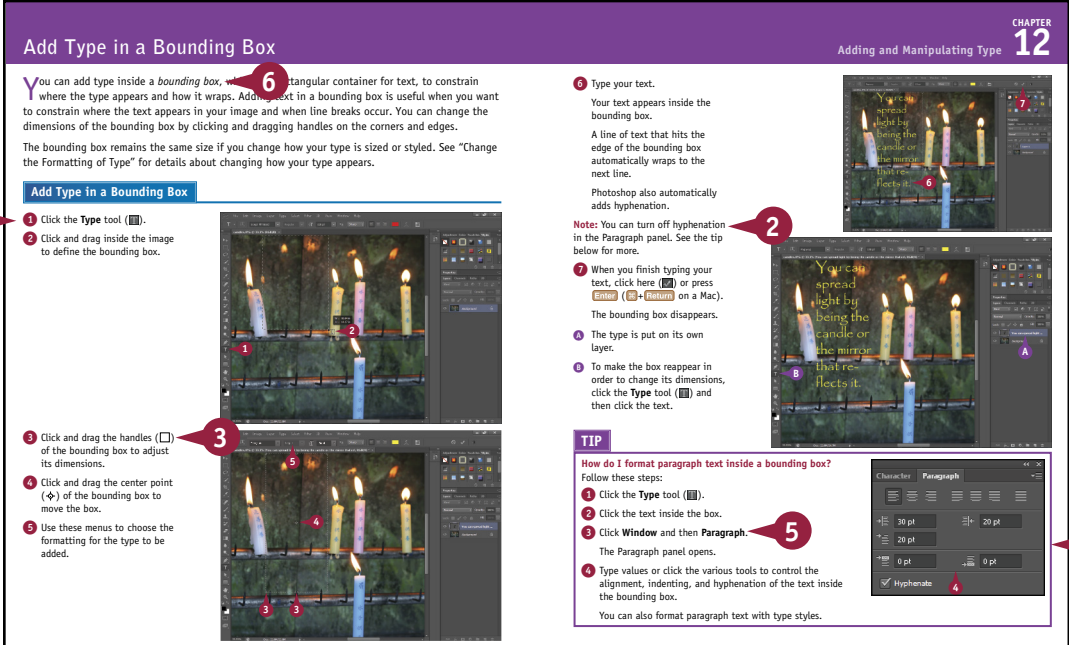


Table of Contents

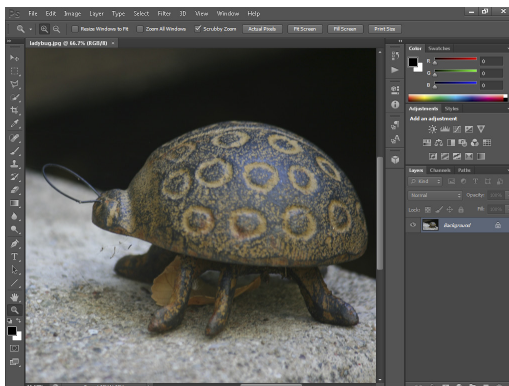
Chapter 1 Getting Started

Work with Images	4
Understanding Photoshop	6
Start Photoshop on a PC	8
Start Photoshop on a Mac	9
The Photoshop Workspace	10
Find Images for Your Projects	11
Set Preferences.....	12
Save a Workspace.....	14
Open an Image.....	16
Browse for an Image in Bridge.....	18
Sort and Filter Images in Bridge.....	20
Display a Slide Show in Bridge.....	22
Import Images from a Camera in Bridge	24
Create a New Image	26
Exit Photoshop.....	27



Chapter 2 Understanding Photoshop Basics

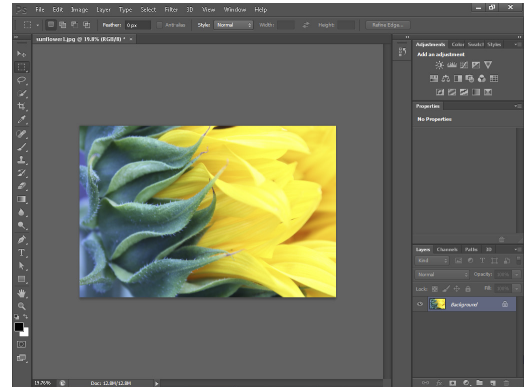
Introducing the Photoshop Toolbox.....	30
Work with Toolbox Tools	32
Magnify with the Zoom Tool	34
Adjust Views	36
Change Screen Modes	38
Using Rulers and Guides.....	40
Undo Commands	42
Revert an Image	43
Manage Image Windows.....	44



Chapter 3

Changing the Size of an Image

Change the On-Screen Size of an Image	48
Change the Print Size of an Image	50
Change the Resolution of an Image	52
Crop an Image.....	54
Crop and Straighten Photos.....	56
Trim an Image.....	57
Change the Canvas Size of an Image.....	58



Chapter 4

Making Selections

Select with the Marquee Tools	62
Select with the Lasso Tool.....	64
Select with the Magnetic Lasso Tool	66
Select with the Quick Selection Tool	68
Select with the Magic Wand Tool.....	70
Select with the Color Range Command	72
Select All the Pixels in an Image.....	74
Move a Selection Border	75
Add to or Subtract from a Selection	76
Invert a Selection	78
Grow a Selection.....	79
Create Slices	80

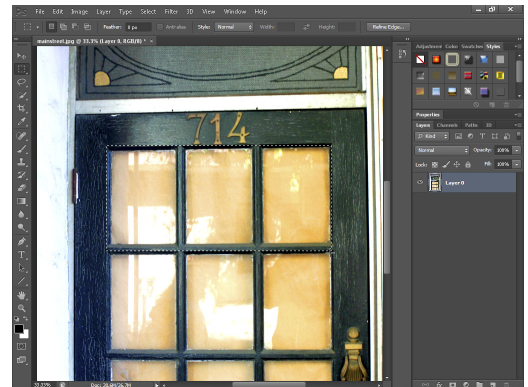
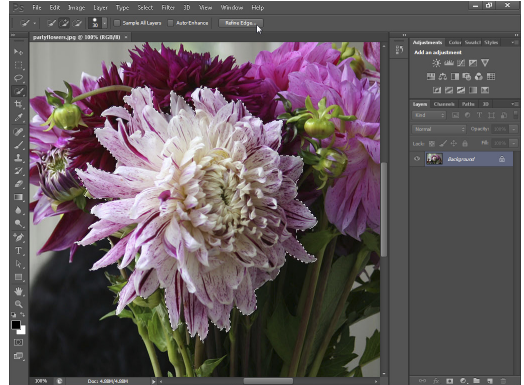


Table of Contents

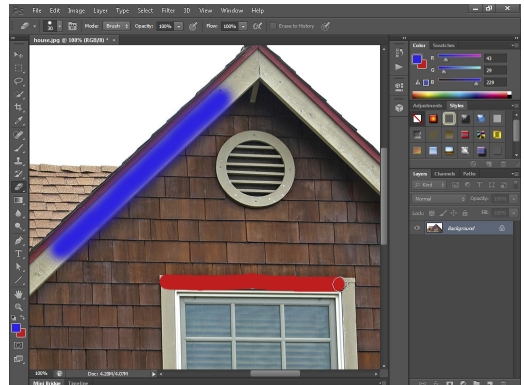
Chapter 5 Manipulating Selections

Move a Selection	84
Copy and Paste a Selection.....	86
Delete a Selection.....	88
Rotate a Selection	89
Scale a Selection	90
Skew or Distort a Selection.....	92
Perform Content-Aware Scaling	94
Refine a Selection Edge	96
Feather the Border of a Selection	98
Create Vanishing Point Planes.....	100
Copy between Vanishing Point Planes	102
Using the Content-Aware Move Tool	104

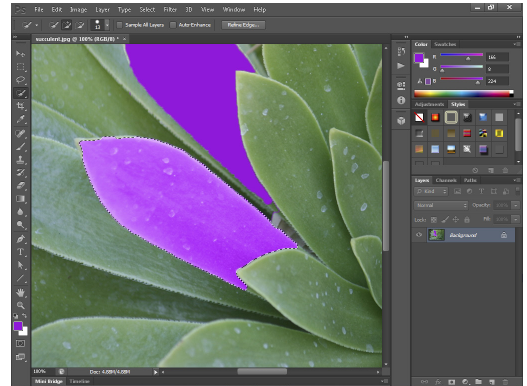


Chapter 6 Painting and Drawing with Color

Select the Foreground and Background Colors	108
Select a Color with the Eyedropper Tool.....	110
Select a Color with the Swatches Panel	111
Using the Brush Tool.....	112
Change Brush Styles	114
Create a Custom Brush.....	116
Using the Mixer Brush	118
Apply a Gradient.....	120
Fill a Selection	122



Using Content-Aware Fill.....	124
Stroke a Selection.....	126
Using the Clone Stamp	128
Using the Pattern Stamp.....	130
Using the Spot Healing Brush	132
Using the Healing Brush	134
Using the Patch Tool.....	136
Using the History Brush.....	138
Using the Eraser	140
Replace a Color.....	142
Fix Red Eye in a Photo.....	144



Chapter 7 Adjusting Lighting and Colors

Change Brightness and Contrast.....	148
Using the Dodge and Burn Tools	150
Using the Blur and Sharpen Tools.....	152
Adjust Levels.....	154
Adjust Curves	156
Adjust Hue and Saturation	158
Using the Sponge Tool.....	160
Adjust Color Balance	162
Using the Variations Command	164
Match Colors between Images.....	166
Correct Shadows and Highlights	168
Create a Duotone	170
Convert to Black and White	172
Adjust Vibrance	174

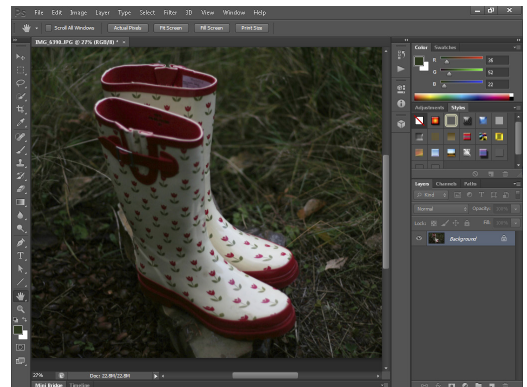


Table of Contents

Chapter 8 Working with Layers

What Are Layers?	178
Create and Add to a Layer	180
Hide a Layer.....	182
Move a Layer.....	183
Duplicate a Layer	184
Delete a Layer	185
Reorder Layers.....	186
Change the Opacity of a Layer	188
Merge Layers	190
Rename a Layer	192
Transform a Layer	193
Create a Solid Fill Layer	194
Create an Adjustment Layer	196
Edit an Adjustment Layer	198
Apply an Adjustment-Layer Preset	200
Link Layers	202
Blend Layers	204
Work with Smart Objects	206
Create a Layer Group	210
Filter Layers	212
Add a Layer Mask.....	214
Edit a Layer Mask.....	216



Chapter 9 Applying Layer Styles

Apply a Drop Shadow.....	220
Apply an Outer Glow.....	222
Apply Beveling and Embossing.....	224
Apply Multiple Styles to a Layer	226
Edit a Layer Style.....	228
Using the Styles Panel.....	230



Chapter 10 Applying Filters

Turn an Image into a Painting	234
Blur an Image	236
Sharpen an Image.....	238
Distort an Image	240
Add Noise to an Image	242
Turn an Image into Shapes.....	244
Turn an Image into a Charcoal Sketch	246
Apply Glowing Edges to an Image	248
Add Texture to an Image	250
Offset an Image.....	252
Using the Liquify Filter	254
Apply Multiple Filters	256
Using Smart Filters.....	258

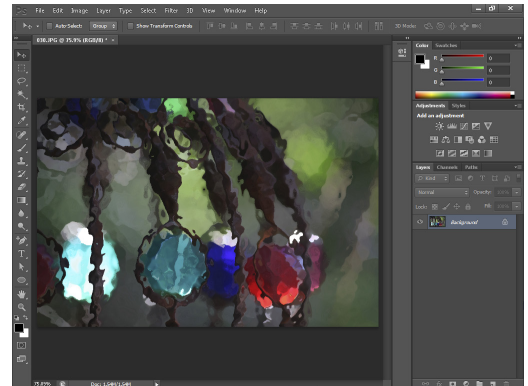
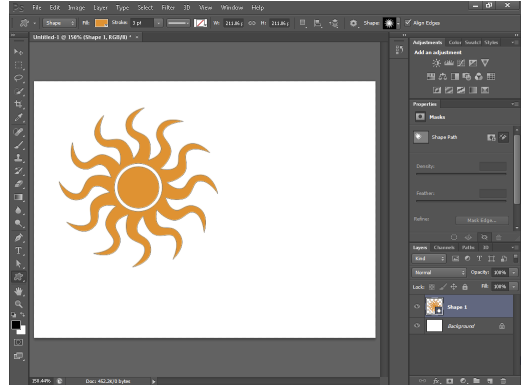


Table of Contents

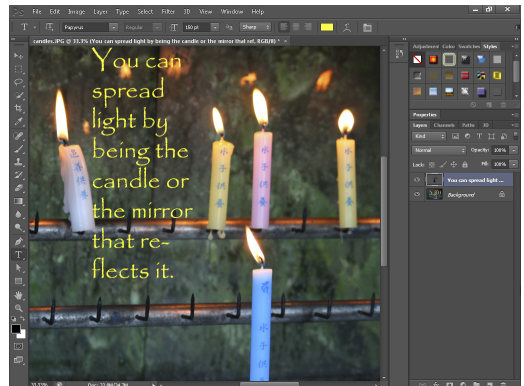
Chapter 11 Drawing Shapes

Draw a Shape	262
Draw a Custom Shape	264
Draw a Straight Line.....	266
Draw a Shape with the Pen.....	268
Edit a Shape	270



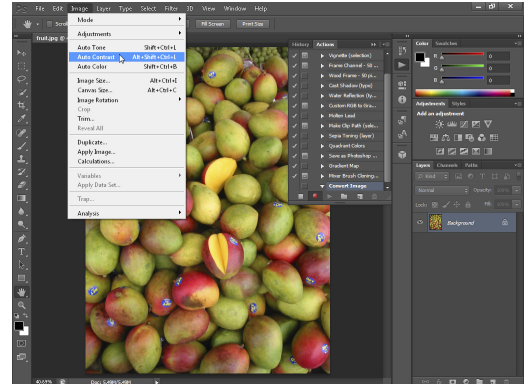
Chapter 12 Adding and Manipulating Type

Add Type to an Image	274
Add Type in a Bounding Box.....	276
Change the Formatting of Type	278
Change the Color of Type	280
Warp Type.....	282



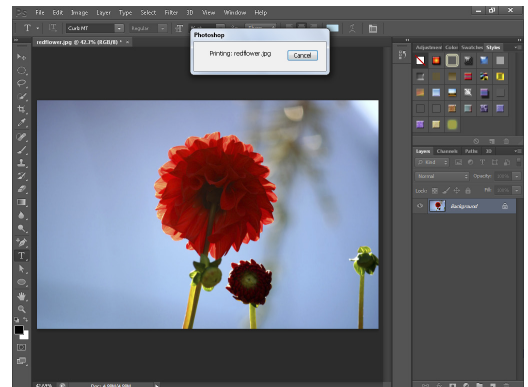
Chapter 13 Automating Your Work

Record an Action	286
Play an Action.....	288
Batch Process by Using an Action.....	290
Create a PDF of Images	292
Create a Web Photo Gallery.....	294
Create a Panoramic Image.....	298
Create an HDR Image	300
Convert File Types.....	302
Batch Rename Images	304
Using Tool Presets	306



Chapter 14 Saving and Printing Images

Save in the Photoshop Format	310
Save an Image for Use in Another Application.....	312
Save a JPEG for the Web	314
Save a GIF for the Web	316
Save a PNG for the Web	318
Add Descriptive and Copyright Information.....	320
Save a Sliced Image	322
Print by Using a PC.....	324
Print by Using a Mac	326

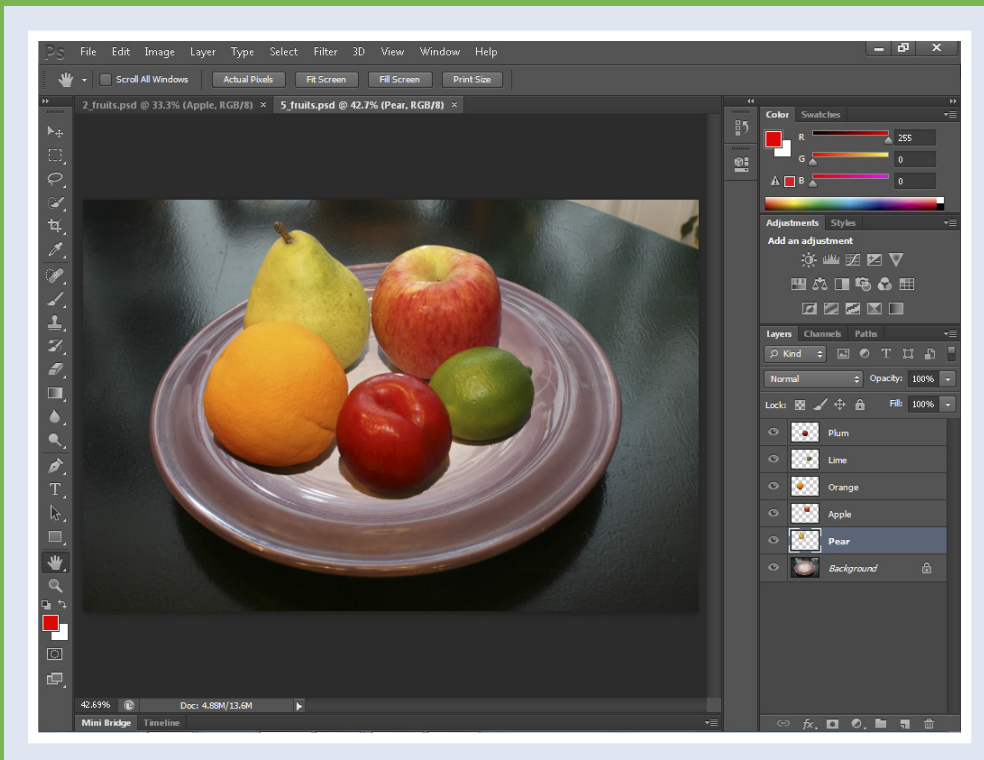


Index.....	328
-------------------	------------

CHAPTER 1

Getting Started

Are you interested in creating, modifying, combining, and/or optimizing digital images on your computer? This chapter introduces you to Adobe Photoshop CS6, a popular software application for working with digital images.



Work with Images4
Understanding Photoshop6
Start Photoshop on a PC8
Start Photoshop on a Mac.9
The Photoshop Workspace	10
Find Images for Your Projects.	11
Set Preferences	12
Save a Workspace	14
Open an Image.	16
Browse for an Image in Bridge	18
Sort and Filter Images in Bridge	20
Display a Slide Show in Bridge	22
Import Images from a Camera in Bridge	24
Create a New Image	26
Exit Photoshop.	27

Work with Images

Photoshop is a popular photo-editing program you can use to modify, optimize, and organize digital images. You can use the program to make imperfect snapshots clearer and more colorful, as well as retouch and restore older photos. With layers, you can isolate objects in your images and apply special effects just to those objects, or combine multiple images into a collage. After you are finished editing your photos, you can save the images to print, share via e-mail, publish online, or view on a mobile device or tablet.

Manipulate Photos

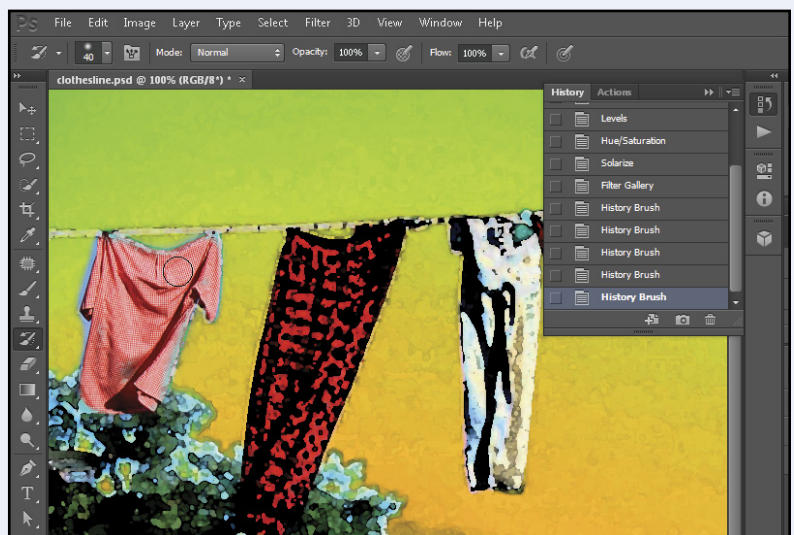
As its name suggests, Photoshop excels at editing digital photographs. The program includes numerous image-editing tools and commands you can apply to manipulate



the look of your photos. Whether you import photos from a digital camera or a scanner, you can apply a wide variety of editing techniques to your images, from subtle adjustments in color to elaborate filters that make your snapshots look like paintings. See Chapter 7 for more on adjusting color and Chapter 10 for more on filters.

Paint Pictures

Photoshop's painting features make it a formidable illustration tool as well as a photo editor. You can apply colors or patterns to your images with a variety of brush styles. See Chapter 6 for more on applying color. In addition, you can use the program's typographic tools to integrate stylized letters and words into your images. See Chapter 12 for more on type. You can also create geometric shapes, which are covered in Chapter 11.



Create a Digital Collage

You can combine different image elements in Photoshop. Your compositions can include photos, scanned art, text, and anything else you can save on your computer as a digital image. By placing elements in Photoshop onto separate layers, you can move, transform, and customize them independently of one another. See Chapter 8 for more on layers. You can also merge several side-by-side scenes into a seamless panorama, which is covered in Chapter 13.



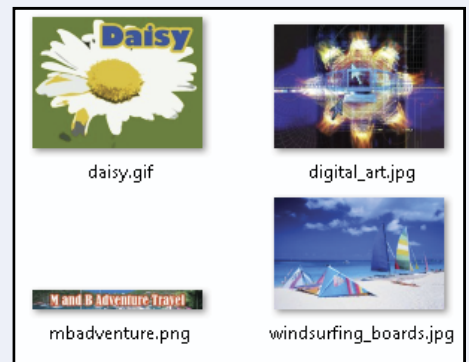
Access, Organize, and Display Photos

Photoshop's Bridge interface offers an easy-to-use tool to access and preview images stored on your computer. See the section "Browse for an Image in Bridge." With Bridge, you can easily tag your images with descriptive information, such as where or when they were taken. You can then use that information to sort your photos. Photoshop also offers useful ways to display your images after you edit them. You can display them as a group in a web photo gallery or combine them on a printed page as a contact sheet. See Chapter 13 for more.



Put Your Images to Work

After you edit your work, you can utilize your images in a variety of ways. Photoshop enables you to print your images, save them in a format suitable for placement on a web page or e-mailing, or prepare them for use in a page-layout program. By using the program's optimization settings, you can ensure that your image files are small in size but still look good. See Chapter 14 for more on saving images in different formats, as well as printing them.

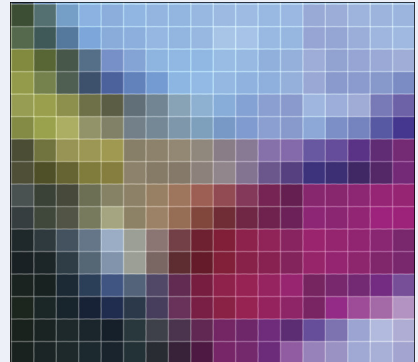


Understanding Photoshop

Photoshop's tools enable you to move, color, stylize, and add text to your images. You can optimize the contrast and lighting in photographs or turn them into interesting works of art by applying filters.

Understanding Pixels

Digital images in Photoshop consist of tiny, solid-color squares called *pixels*. Photoshop works its magic by rearranging and recoloring these squares. You can edit specific pixels or groups of pixels by selecting the area of the photo you want to edit. If you zoom in close, you can see the pixels that make up your image. For more on the Zoom tool, see Chapter 2.



Choose Your Pixels

To edit specific pixels in your image, you must first select them by using one of Photoshop's selection tools. You can make geometric selections by using the marquee tools or free-form selections by using the Lasso tool. See Chapter 4 for more on the selection tools. Photoshop also has a number of commands that help you select specific parts of your image, such as a certain color or range of colors. Special brushes in Photoshop enable you to select objects in your image based on how the colors of those objects contrast with the background.



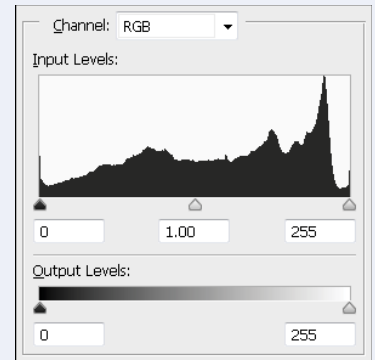
Paint

After selecting your pixels, you can apply color to them by using Photoshop's Brush, Mixer Brush, Paint Bucket, and Pencil tools. You can also fill your selections with solid or semitransparent colors, patterns, or pixels copied from another part of your image. Painting is covered in Chapter 6. Special painting tools help you seamlessly cover up objects in your image or eliminate dust specks, tears, and other imperfections from a scanned picture.



Adjust Color

You can brighten, darken, and change the hue of colors in parts of your image with Photoshop's Dodge, Burn, and similar tools. Other commands display interactive dialog boxes that let you make wholesale color adjustments so you can correct overly dark or light digital photographs. See Chapter 7 for more. You can also add adjustment layers to your image that enable you to make changes to the color commands later on. See Chapter 8 for more about layers.



Apply Styles and Filters

Photoshop's layer styles let you easily add drop shadows, frame borders, and other effects to your images. You can also perform complex color manipulations or distortions by using filters. Filters can make your image look like an impressionist painting, sharpen or blur your image, or distort your image in various ways. Chapters 9 and 10 cover styles and filters.



Add Text

Photoshop's type tools make it easy to apply titles and labels to your images. With the Character and Paragraph panels, you can control the size, spacing, and alignment of your text. You can combine these tools with the program's special effects commands to create warped, 3-D, or wildly colored words and characters. You can learn more about adding text in Chapter 12.



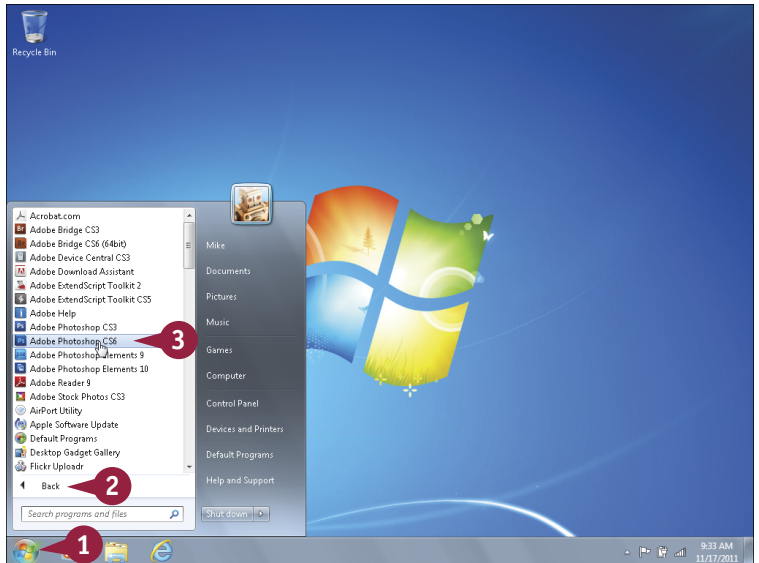
Start Photoshop on a PC

After you install Photoshop, you can start it to begin creating and editing digital images. Common ways of obtaining and installing the program include from DVD disc or by downloading it from Adobe over the Internet. On a PC, you can access Photoshop as you do other programs — through the Start menu.

Start Photoshop on a PC

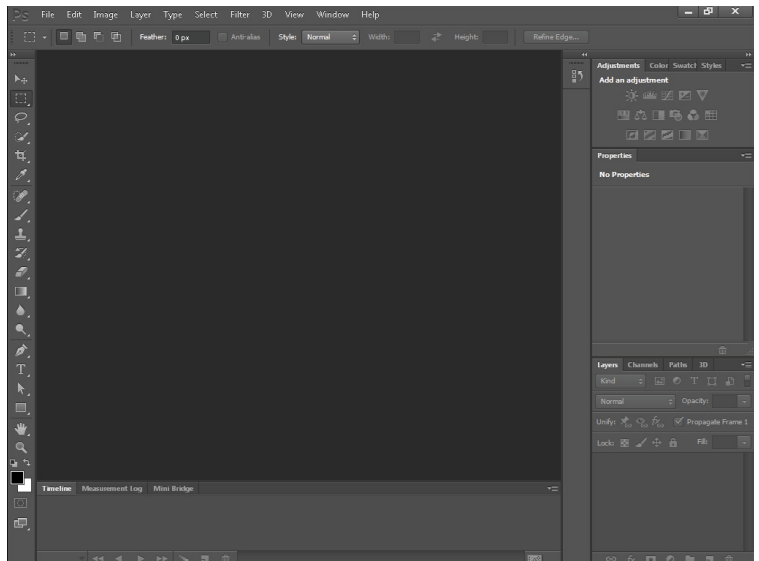
- 1 Click the **Start** button.
- 2 Click **All Programs** (All Programs changes to Back).
- 3 Click **Adobe Photoshop CS6**.

Note: Your path to the Photoshop program may be different depending on how you installed your software.



Photoshop starts.

Note: To learn how to open an image and start working, see the section “Open an Image.”



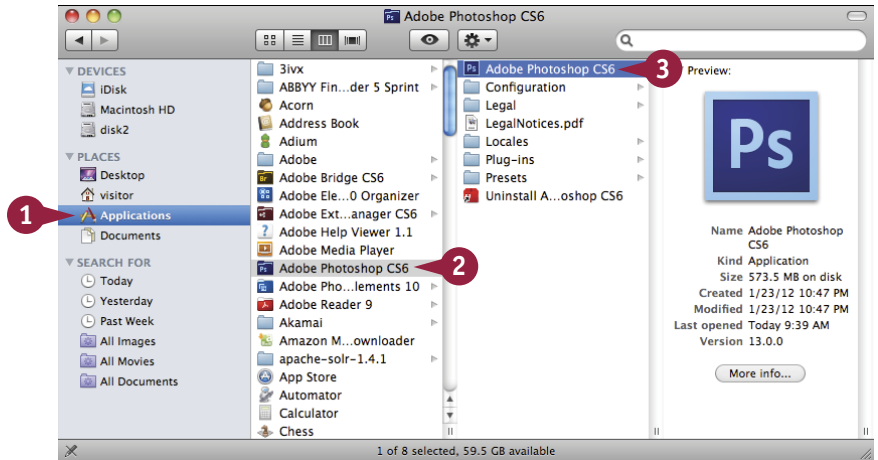
Start Photoshop on a Mac

After you install Photoshop, you can start it to begin creating and editing digital images. Common ways of obtaining and installing the program include from DVD disc or by downloading it from Adobe over the Internet. On a Mac, you can access Photoshop through the Finder in the Applications folder or by using the LaunchBar.

Start Photoshop on a Mac

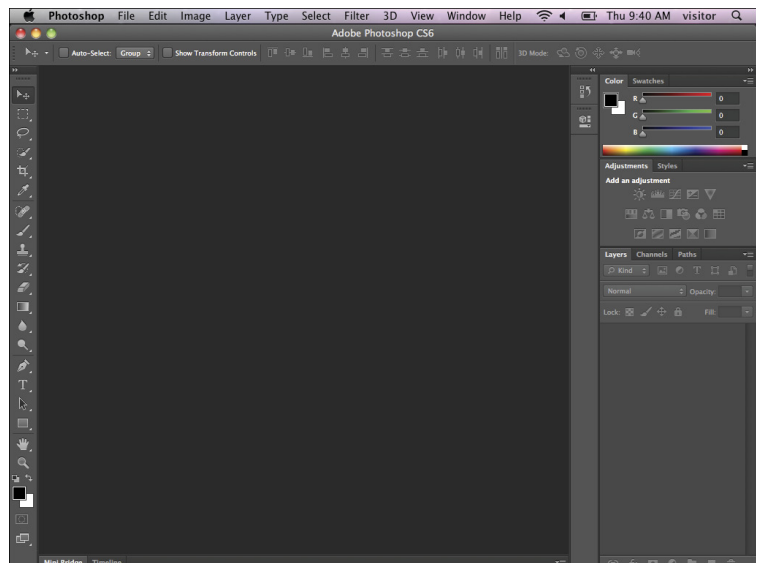
- 1 In the Finder, click **Applications**.
- 2 Click the **Adobe Photoshop CS6** folder.
- 3 Double-click **Adobe Photoshop CS6**.

Note: The exact location of the Adobe Photoshop icon may be different depending on how you installed your software.



Photoshop starts.

Note: To learn how to open an image and start working, see the section "Open an Image."



The Photoshop Workspace

In Photoshop, you open your digital images in a main image window and then use a combination of tools, menu commands, and panel-based features to edit the images.

A Application Bar

Displays menus that contain most of Photoshop's commands and functions.

B Options Bar

Displays controls that let you customize the selected tool in the Toolbox.

C Title Tab

Displays the name, magnification, and color mode of an open image. You can switch between images by clicking their respective tabs.

D Image Window

Displays the images you open in Photoshop.

E Toolbox

Displays a variety of icons, each one representing an image-editing tool. You click and drag inside your image to apply most of the tools. Also displays the current foreground and background colors.



F Status Bar

Displays the magnification of the current image and the amount of computer memory that image is using.

G Panels

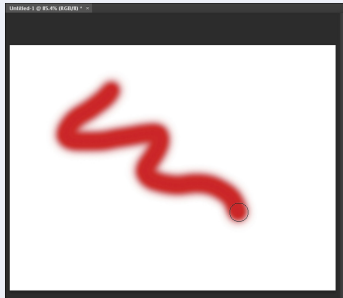
Small windows that give you access to common commands and resources. You can click the tabs and icons to display and hide panels.

Find Images for Your Projects

You can get raw material to work with in Photoshop from a variety of sources.

Start from Scratch

You can create your Photoshop image from scratch by opening a blank canvas in the image window. Then, you can apply color and patterns with Photoshop's painting tools or cut and paste parts of other images to create a composite. See the section "Create a New Image" for more on opening a blank canvas.



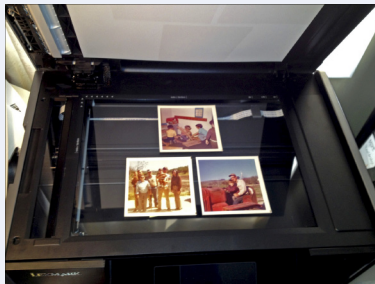
Digital Camera Photos

Digital cameras are a great way to get digital images onto your computer. Most digital cameras save their images in JPEG, TIFF, or RAW format, all of which you can open and edit in Photoshop. The program's color adjustment tools, covered in Chapter 7, are great for correcting color and exposure flaws in digital camera images.



Scanned Photos and Art

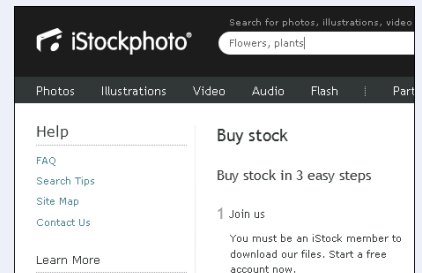
A scanner gives you an inexpensive way to convert existing paper- or slide-based content into digital form. You can scan photos and art into your computer, retouch and stylize them in Photoshop, and then output them to a color printer. To automatically separate photos that were scanned together as a single image, see Chapter 3.



Affordable Online Photos

There are many websites that feature images that are in the public domain or are available for noncommercial use. Wikimedia Commons (<http://commons.wikimedia.org>) is one such site. If you have a little money to spend, you can license images from *microstock* websites, which are known for low-cost, downloadable images.

iStockphoto (<http://www.istockphoto.com>) is a popular microstock site.



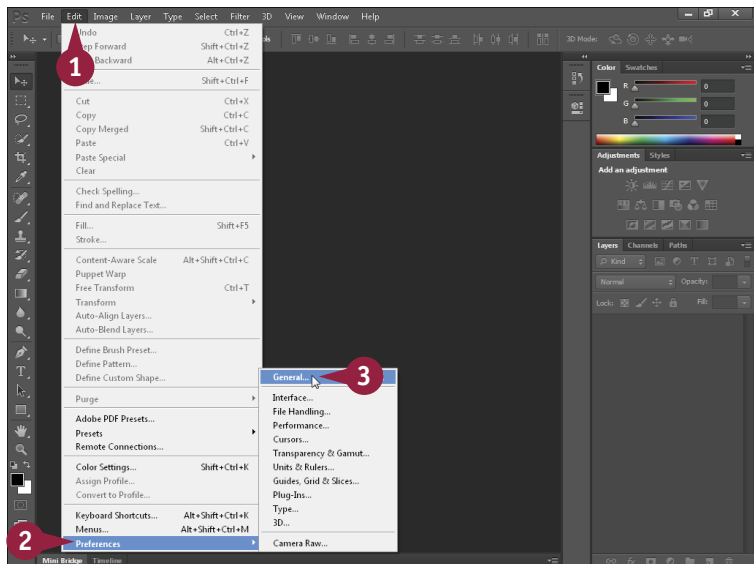
Set Preferences

Photoshop's Preferences dialog boxes enable you to change default settings and customize how the program looks. You can set preferences to create a workspace that matches how you like to work.

When you make changes to the program in the preferences, the changes remain after you exit the program and then open it again.

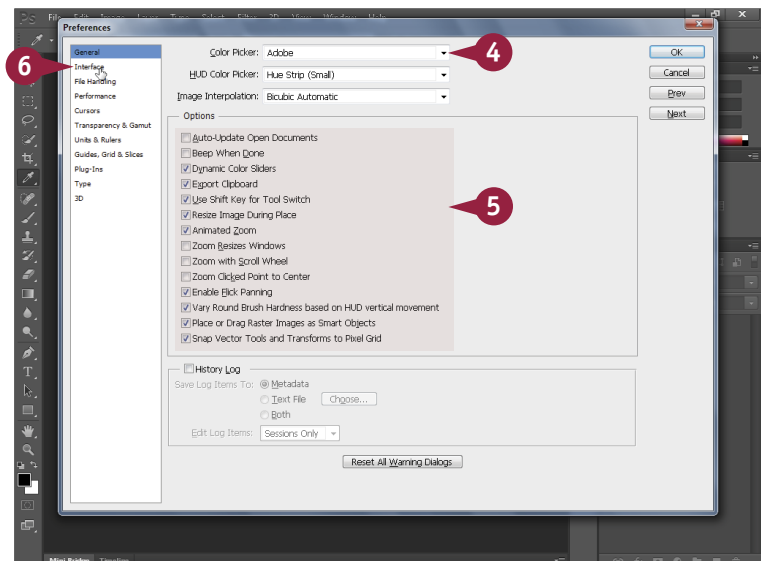
Set Preferences

- 1 Click **Edit** (Photoshop on a Mac).
- 2 Click **Preferences**.
- 3 Click **General**.



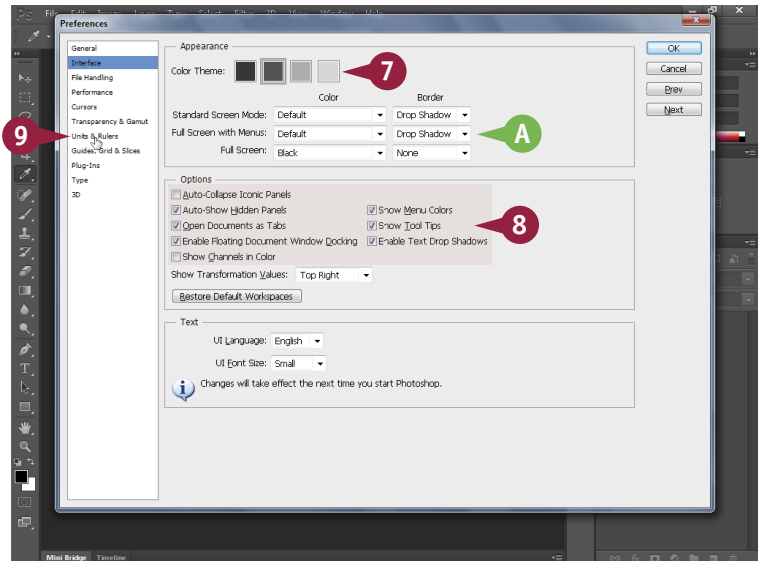
The Preferences dialog box opens and displays General options.

- 4 Click here (▾) to select which dialog box opens when you select a color.
- 5 Select the general options you want to use (☐ changes to ☑).
- 6 Click **Interface**.



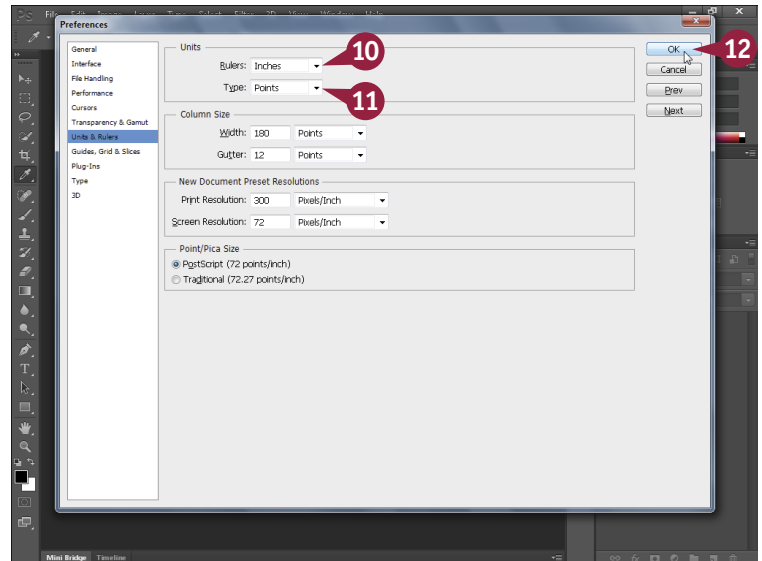
The Interface options appear.

- 7 Click to select a color theme.
- A You can select from menus (▾) to further customize the interface colors.
- 8 You can click check boxes to customize the behavior of menus, panels, and other interface features (☐ changes to ☑).
- 9 Click **Units & Rulers**.



The Units & Rulers options appear.

- 10 Click here (▾) to select the units for the window rulers.
- These units become the default units selected when you resize an image.
- 11 Click here (▾) to select the default units for type.
 - 12 Click **OK**.
- Photoshop sets preferences to your specifications.



TIPS

What type of measurement units should I use in Photoshop?

You should use the units most applicable to the type of output you intend to produce. Pixel units are useful for web imaging because monitor dimensions are measured in pixels. Inches, centimeters, and picas are useful for print because those are standards for working on paper. You can set this under the Units & Rulers preferences.

How can I change the number of operations saved in the History panel?

You can backtrack through your work by using the History panel. To change the number of operations Photoshop remembers, click **Performance** in the Preferences window and then change the History States value. Photoshop can remember as many as 1,000 operations. The default is 20.

Save a Workspace

You can position the different Photoshop panels, define keyboard shortcuts, customize your menus, and then save the arrangement as a workspace. This can be helpful if you work on various types of Photoshop projects that require the use of different tools and commands. You can access the different workspaces that you have saved under the Window menu.

Save a Workspace

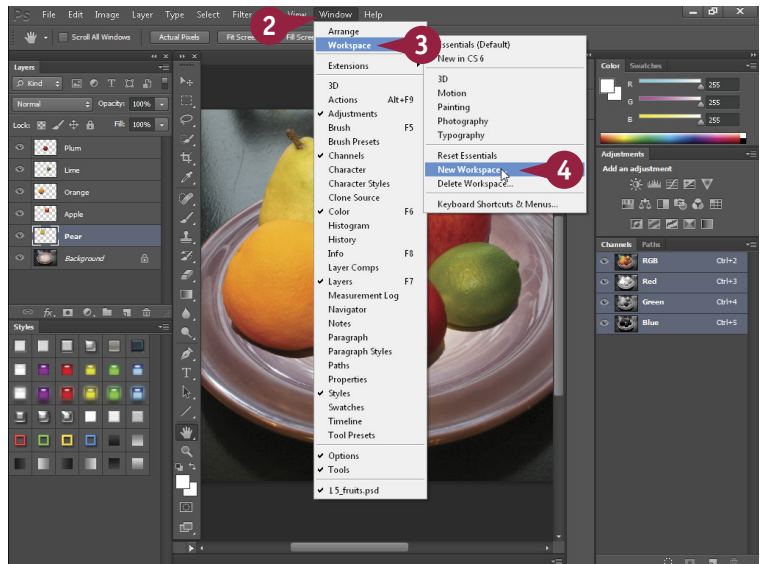
Save a Workspace

- 1 Arrange the Toolbox and panels in the Photoshop interface.

To define keyboard shortcuts or customize menus, click **Edit** and then **Keyboard Shortcuts** or **Menus**.



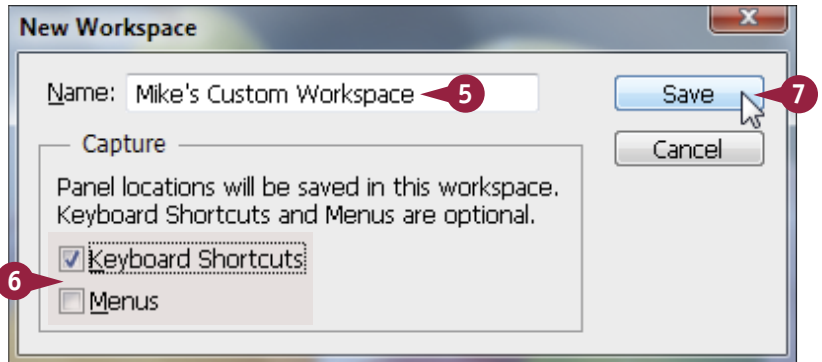
- 2 Click **Window**.
- 3 Click **Workspace**.
- 4 Click **New Workspace**.



The New Workspace dialog box opens.

- 5 Type a name for your workspace.
- 6 Select the interface elements you want to save (changes to) .
- 7 Click **Save**.

Photoshop saves the workspace.

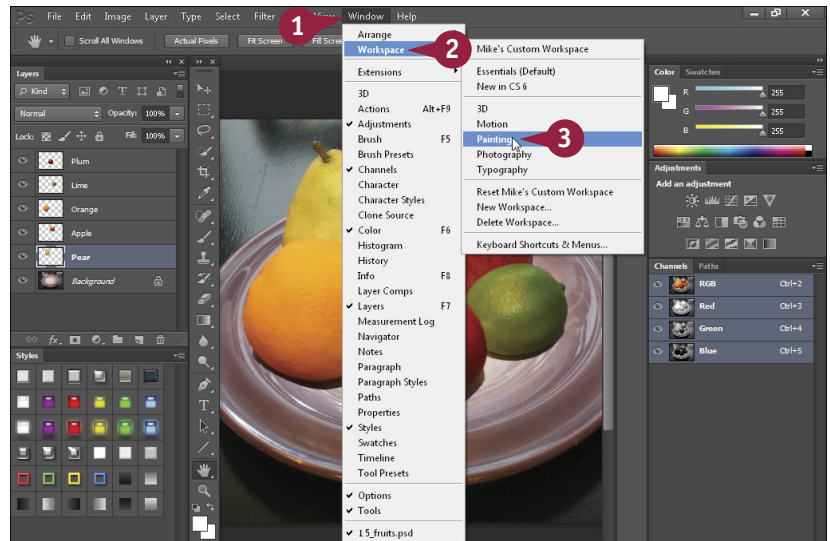


Select a Workspace

- 1 Click **Window**.
- 2 Click **Workspace**.
- 3 Click a workspace.

You can choose a workspace you have defined previously or one of Photoshop's predefined workspaces.

Photoshop rearranges the workspace.



TIP

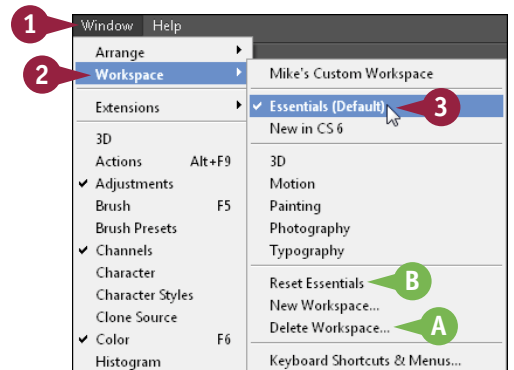
How do I return to the default workspace?

Follow these steps:

- 1 Click **Window**.
- 2 Click **Workspace**.
- 3 Click **Essentials (Default)**.

Photoshop returns you to the default setup, with the Toolbox on the left side and panels on the right.

- A You can click **Delete Workspace** to get rid of a workspace you have saved.
- B You can click the **Reset** command to return the currently selected workspace to its original arrangement.



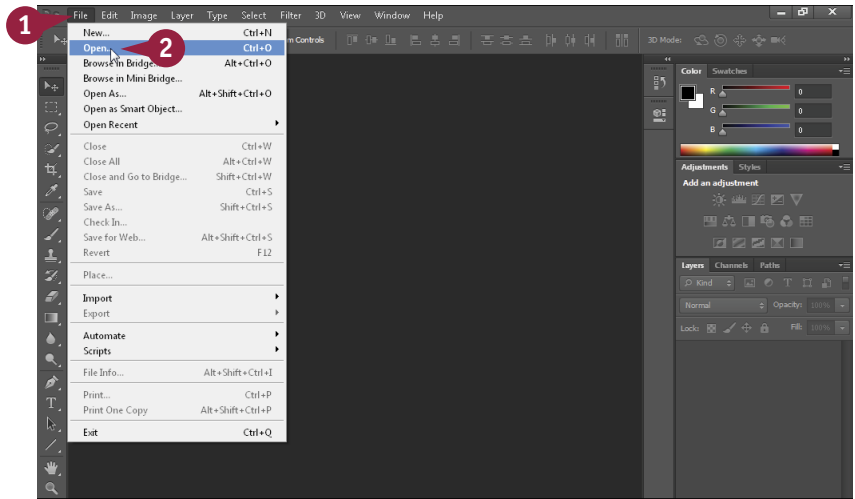
Open an Image

You can open an image in Photoshop to modify it or to use it in a project. After you open the photo, you can adjust its color and lighting, add special effects, and move objects in the photo to separate layers.

You can open more than one photo at a time. You can switch between photos using the title tabs. For information about managing images after you open them, see Chapter 2.

Open an Image

- 1 Click **File**.
- 2 Click **Open**.



The Open dialog box appears.

- 3 Click here () to choose the type of files to display in the window.

All Formats is the default and displays all image and nonimage formats.

