

Uwe Graune, Mike Thielert, Ludwig Wenzl

LOGO!

Practical Training

SIEMENS



Graune/Thielert/Wenzl
LOGO! Practical Training

LOGO!

Practical Training

by Uwe Graune,
Mike Thielert and
Ludwig Wenzl

Publicis Publishing

Bibliographic information published by the Deutsche Nationalbibliothek
The Deutsche Nationalbibliothek lists this publication in the Deutsche Nationalbibliografie;
detailed bibliographic data are available in the Internet at <http://dnb.d-nb.de>.

Licensed edition of LOGO! Praxistraining
2nd edition, ISBN 978-3-14-231227-9
© 2009 by Bildungshaus Schulbuchverlage
Westermann Schroedel Diesterweg Schöningh Winklers GmbH, Braunschweig, Germany

The authors, translator and publisher have taken great care with all texts and illustrations in this book. Nevertheless, errors can never be completely avoided. The publisher, authors and translator accept no liability, regardless of legal basis. Designations used in this book may be trademarks whose use by third parties for their own purposes could violate the rights of the owners.

www.publicis.de/books

ISBN 978-3-89578-338-8

Editor: Siemens Aktiengesellschaft, Berlin and Munich
Publisher: Publicis Publishing, Erlangen
© 2009 by Publicis KommunikationsAgentur GmbH, GWA, Erlangen
This publication and all parts thereof are protected by copyright.
Any use of it outside the strict provisions of the copyright law without the consent of the publisher is forbidden and will incur penalties. This applies particularly to reproduction, translation, microfilming or other processing, and to storage or processing in electronic systems. It also applies to the use of individual illustrations or extracts from the text.

Printed in Germany

Preface

The LOGO! control relay is being used to an increasing extent in installation technology, and also for simple industrial applications. This is because this mini PLC permits simple implementation of control tasks along with flexible use.

This handbook has a practice-based structure, and is appropriate for trainees, pupils and students as well as technical employees and trainers. In addition to basic "operating instructions", an holistic approach is used to indicate the fundamental procedures when tackling control problems.

At the beginning, programming of the LOGO! control relay is explained by means of a "quick start" using both manual inputs and the LOGO!Soft Comfort software.

Standard situations encountered in control technology are subsequently presented in numerous projects (e.g. interlocks, sequential circuits, safety regulations etc.). Selection of the hardware is considered along with development of the program. The enclosed CD includes a LOGO! demo version. Readers can thus understand the explanations in the book in parallel on a PC, and check using a simulation. The scope of explanations is extremely detailed in the first examples, but is then continuously reduced to the necessary amount.

In the more complex tasks, both the processing of analog values and the connection of LOGO! over the AS-i and EIB bus systems are treated. The comprehensive possibilities offered by the LOGO! control relay are presented here in abbreviated form such that the interest of LOGO! beginners is also aroused.

The following functions of LOGO! are only available with the LOGO! devices starting with release version 0BA6 and with LOGO!Soft Comfort starting with version 6:

- Analog arithmetic operations (Chapter 7.5 Mathematical functions)
- External text display LOGO! TD (Chapter 7.6 and Chapter 8)
- Pulse width modulation (Chapter 7.7 PWM)

All other contents of the book can also be programmed for LOGO! devices of earlier release versions.

The last two chapters of the book are provided for information purposes for the previous project tasks. Detailed reference is made there to control elements, sensors and LOGO! hardware. This part is rounded off by a list of all program commands for LOGO!

The enclosed CD contains the following contents:

- LOGO!Soft Comfort configuring software (demo version)
- LOGO! control programs for the application examples presented in this book
- The LOGO! Manual in eight languages: Chinese, Dutch, English, French, German, Italian, Russian, Spanish, Turkish
- A PDF of a brochure on micro automation and LOGO!

The contents of the book form a training arrangement which directs you toward planned actions in that the steps "Planning" (including documentation), "Implementation" (= programming) and "Checking" (e.g. by means of program simulation) are executed in each project task.

The authors hope you will be able to work successfully with this handbook, and are always grateful to hear your responses or suggestions for improvement.

Contents

1 Quick start

1.1	Solving of control tasks with LOGO! . . .	9
1.2	Description of control task	10
1.3	Implementation of control task with LOGO!	10
1.4	Generation of LOGO! program	11
1.4.1	Function block diagram (FBD)	11
1.4.2	Ladder diagram (LAD)	11
1.5	Program input directly on LOGO! module	12
1.5.1	Calling of editing mode	12
1.5.2	Manual input of program	13
1.5.3	Activation of RUN mode	14
1.5.4	Program test	14
1.6	Programming with LOGO!Soft Comfort	15
1.6.1	Use of LOGO!Soft Comfort	15
1.6.2	Simulation with LOGO!Soft Comfort . .	17

2 Shading of a conservatory

2.1	Task analysis	19
2.1.1	Analysis of input and output variables .	21
2.1.2	Definition of system properties	21
2.2	Hardware configuration	22
2.2.1	Selection of control relay	22
2.2.2	Assignment list	23
2.2.3	Connection diagram	23
2.3	Software configuration	23
2.3.1	Program preparation	23
2.3.2	Program for manual mode	24
2.3.3	Transfer of program	26
2.4	Expansion of control to automatic mode	28
2.4.1	Copying of program	29
2.4.2	System properties in automatic mode .	29
2.4.3	Program for manual mode	29
2.4.4	Program for automatic mode	33

3 Car park with counting function

3.1	Task description	34
3.1.1	Function description	34
3.2	Hardware configuration	34
3.2.1	Selection of LOGO!	34
3.2.2	Connection diagram of LOGO!	36
3.3	Software configuration	37

3.3.1	Analysis and planning of software . . .	37
3.3.2	Software development	38
3.3.3	Entire representation as FBD	40
3.3.4	Entire representation as LAD	41

4 Grain store (sequential circuit)

4.1	Task description	42
4.1.1	Function description	42
4.2	Hardware configuration	42
4.2.1	Selection of LOGO!	42
4.2.2	Connection diagram of LOGO!	44
4.3	Software configuration	45
4.3.1	Analysis and planning of software . . .	45
4.3.2	Software development	45
4.3.3	Entire representation as FBD	48
4.3.4	Entire representation as LAD	49
4.4	Grain store – export version	50
4.4.1	Task description	50
4.4.1.1	Function description	50
4.4.2	Hardware configuration	50
4.4.2.1	Selection of LOGO!	50
4.4.2.2	Connection diagram of LOGO!	50
4.4.3	Software configuration	50
4.4.3.1	Analysis and planning of software . . .	50
4.4.3.2	Software development	51

5 Pallet magazine (step sequence)

5.1	Task description	52
5.1.1	Function description	52
5.2	Hardware configuration	52
5.2.1	Selection of LOGO!	52
5.2.2	Connection diagram of LOGO!	53
5.3	Software configuration	54
5.3.1	Analysis and planning of software . . .	54
5.3.2	Software development	56
5.3.3	Entire representation of step sequence	59

6 Production Line with AS-Interface

6.1	Task description	60
6.1.1	Function description	60

6.2	Hardware configuration	61
6.2.1	Selection of additional components . .	61
6.3	Hardware and software configurations	62
6.4	Software configuration	64
6.4.1	LOGO!	64

7 Software projects

7.1	Autoclave with Pt100	66
7.1.1	Task and function description	66
7.1.2	Hardware configuration	66
7.1.3	Software configuration	67
7.2	School bell with EIB	68
7.2.1	Task and function description	68
7.2.2	Hardware configuration	68
7.2.3	Software configuration	68
7.3	Analog value processing in a labeling machine	70
7.3.1	Task and function description	70
7.3.2	Hardware configuration	70
7.3.3	Software configuration	71
7.4	Greenhouse with PI controller	72
7.4.1	Task and function description	72
7.4.2	Hardware configuration	72
7.4.3	Software configuration	73
7.5	Drum speed with mathematical function	74
7.5.1	Task and function description	74
7.5.2	Hardware configuration	74
7.5.3	Software configuration	75
7.6	Car wash with LOGO! TD	76
7.6.1	Task and function description	76
7.6.2	Hardware configuration	76
7.6.3	Software configuration	77
7.7	Buffer vessel with PWM	80
7.7.1	Task and function description	80
7.7.2	Hardware configuration	80
7.7.3	Software configuration	81

8 Hardware

8.1	Control elements and sensors	82
8.1.1	Signals	82
8.1.2	Control elements	83
8.1.3	Sensors	83
8.1.3.1	Limit contact/end switch/microswitch/ position switch	84
8.1.3.2	Proximity sensors	84
8.1.3.3	Inductive proximity sensor	85
8.1.3.4	Capacitive proximity sensor	86
8.1.3.5	Magnetic proximity sensor/reed contact	86
8.1.3.6	Magneto-resistive proximity sensor . .	87
8.1.3.7	Cylinder position transmitter	87
8.1.3.8	Optical proximity sensor	87
8.1.3.9	Ultrasonic sensors	89
8.1.3.10	Temperature sensors	89
8.2	LOGO! control relays	90
8.2.1	Voltage classes	91
8.2.2	Technical specifications of the LOGO! range	91
8.2.2.1	Basic devices	91
8.2.2.2	Expansion modules	93
8.2.2.3	Communication modules CM EIB/KNX	96
8.3	Motor control unit	97
8.4	Electropneumatic objects	98

9 Logic operations

9.1	Representations	101
9.2	Basic logic operations	102
9.3	Constants/terminals	103
9.4	Special functions	105

Index	110
------------------------	-----

Picture sources	111
----------------------------------	-----

LOGO! Practical Training

Introduction

A simple problem to become rapidly acquainted with the LOGO!

1 Quick start Page 9

- Manual programming
- Software programming: FBD

Detailed instructions for a complete and system-based control task from assignment of order up to startup

2 Shading of a conservatory Page 18

- Task analysis
 - Definition of control
 - Material flow
 - Information flow
 - Control circuit
- Hardware
 - Sensors and control elements
 - Selection of control relay
 - Actuators
- Software
 - Program development
 - Positioning of input and output
 - AND, OR, NOT RS, TIMER
 - Simulation
 - Commissioning with online monitoring
- Documentation

Reference material

Summary and fundamentals for reference

9 Logic operations Page 101

- Control elements
- Sensors
- LOGO! family
- Actuators

8 Hardware Page 82

Special applications

- LOGO! AM2 PT100
 - Pt100 sensor
 - Pressure sensor
 - Hardware
- 7.1 Autoclave with Pt100
Page 66
 - Analog threshold switch
 - Analog difference threshold switch
 - Logic operations
- LOGO! CM EIB/KNX
 - Hardware
- 7.2 School bell with EIB
Page 68
 - Edge-triggered interval time-delay relay
 - Week time switch
 - Year time switch
 - Logic operations
- LOGO! AM2 AQ
 - Analog signal generation with potentiometer
 - Frequency converter
 - Ultrasonic sensor with frequency output
 - Hardware
- 7.3 Analog value processing in a labeling machine
Page 70
 - Analog threshold switch
 - Analog amplifier
 - Ramp control
 - XOR
 - Analog output
 - Logic operations
- 7.4 Greenhouse with PI controller
Page 72
 - PI controller
 - Pulse generator
 - Logic operations
- 7.5 Drum speed with mathematical function
Page 74
 - Analog arithmetic
 - Logic operations
- LOGO! TD
 - Hardware
- 7.6 Car wash with LOGO! TD
Page 76
 - GRAFSET: alternative branches
 - GRAFSET: parallel branches
 - Message text
 - Logic operations
- Laser distance sensor
 - Hardware
- 7.7 Buffer vessel with PWM
Page 80
 - Analog MUX
 - PWM
 - Logic operations

7 Software projects

Standard applications

- 3 Car park with counter function
Page 34
 - Hardware
 - Selection of objects
 - Hardware interlocking of outputs
 - Direction reversal
 - Software
 - Signal/time diagram as analysis support
 - Direction reversal
- 4 Grain store (sequential circuit)
Page 42
 - Complete development of a controller with a switch-on/off sequence and consideration of safety aspects
 - Open-circuit protection and resistance to ground faults
 - Safety
 - EMER. STOP and stop
 - Hardware
 - Safety circuit
 - Logic operations
 - Message text
- 5 Pallet magazine (step sequence)
Page 52
 - Development of a controller as step sequences with application of electropneumatic objects
 - Hardware
 - Electropneumatic
 - Logic operations
 - Switch-on delay
- 6 Production line with AS-Interface
Page 60
 - Integration of a LOGO! into a production line with ASI bus on the basis of an S7-200
 - Logic operations
 - Pulse generator
 - Counters

1 Quick start

1.1 Solving of control tasks with LOGO!

The principle of operation for the control of technical systems with LOGO! control relays can be described in abbreviated form as follows:

Input signals supply the control relay with information on the current state of the process and any operator commands. The control relay reacts to these input signals in accordance with a defined program. It then generates output signals which influence the process in the intended manner via actuators (final control elements).

Small control tasks can be solved using programmable control relays with a minimum of hardware. It is possible to learn and apply the required programming knowledge extremely easily. The following example is a direct introduction to the programming of LOGO!

The control sequence is defined by a corresponding **program** in the memory of the LOGO! device. There are **two different ways** to enter the program. These two programming methods are described in brief below.

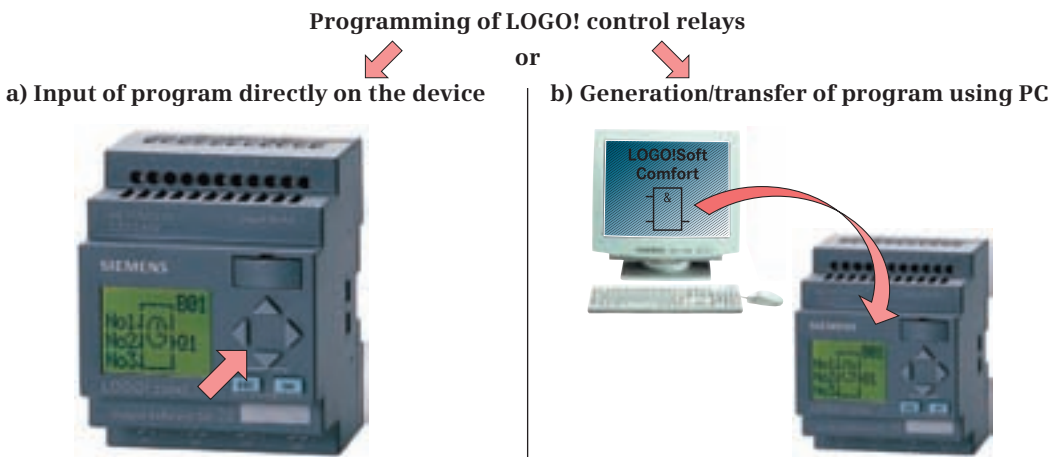


Fig. 1.1 Programming using manual inputs

The LOGO! basic module can be programmed **directly** on the device without particular effort. The six existing keys and the LCD are used.

When pressing a key, users are provided with menu prompting which allows the input or deletion of a program, parameterization of characteristic values, etc. A **PC is not required!** The program is output on the display in the **Function Block Diagram (FBD)**.

This diagram corresponds to the FBD language used for PLC programming. Logic operations, timers, counters etc. are displayed as rectangular blocks. Only one block can be output on the display at a time, and jumping to other blocks is possible using arrow keys. This programming technique is described in Chapter 1.5.

Fig. 1.2 Programming using PC

The LOGO!Soft Comfort software allows a clear display of the complete program on the screen. Following generation and the simulation test, the finished program can be transferred via cable to the LOGO! basic module. An online test permits monitoring of control signals during operation of the device. The LOGO!Soft Comfort software can display programs in the following two ways:

- a) **Function Block Diagram (FBD)**.
- b) **Ladder (LAD)**

The LAD display is referred to in PLC programming as the ladder diagram. It is very similar to a circuit diagram, and therefore represents control programs in an extremely clear manner. This programming method is described in Chapter 1.6.

1.2 Description of control task

Customer orders are assembled on pallets in the warehouse of a wholesale company for sanitary requirements. In the area in front of the warehouse, orders ready for dispatch are transported on a pallet conveyor system (chain conveyor) to the truck ramp (Fig. 1.3).

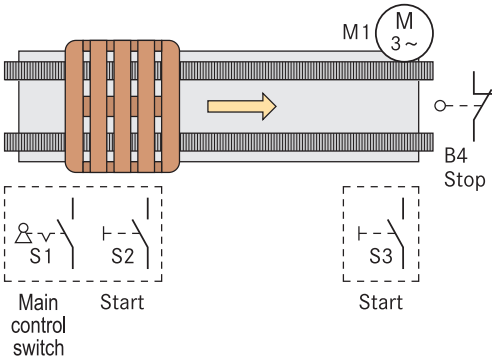


Fig. 1.3 Process schematic of the conveyor system

Control sequence:

The two keys S2 and S3 permit transportation of the pallets in so-called jogging mode. The pallets are only transported further if at least one of the start keys is kept depressed.

The pallets are transported into the end position where they activate the limit contact B4 ("end switch"). B4 prevents a pallet from being unintentionally transported beyond the end position and thus falling off. Switching-off of the master switch S1 suppresses all movements of the chain conveyor drive.

The control task which has just been described was previously executed as a hardwired control system. The circuit diagram of the control circuit is shown in Fig. 1.4.

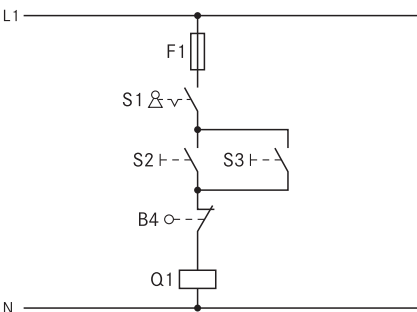


Fig. 1.4 Previous control circuit as hardwired control system

1.3 Implementation of control task with LOGO!

Since the warehouse of the wholesale company for sanitary requirements is to be modernized, this is an appropriate time to replace the previous conventional contactor controls. For the pallet conveyor system, the decision is made by the commissioned electrical company to use the LOGO! programmable control relay.

Application of the control relay provides the user with numerous expansion options for special functions which are already integrated in the device, meaning that no additional hardware costs arise.

Examples can be mentioned here:

- Recording of quantities
- Operating hours counter
- Time functions
- Bus communication (only special modules)

Further chapters in the book provide comprehensive information on the numerous special functions of the LOGO! devices.

In addition to the special functions, such types of control relays can be reprogrammed rapidly and simply. Therefore changes in functions can usually be carried out without modification of the hardware (rewiring).

This increases the flexibility and economy of transportation procedures and production processes. Conversion of the existing, conventional control system to LOGO! is carried out by connecting all previous sensors and control elements individually to the input side. In this case these are the master switch S1, the keys S2 and S3, and the limit contact B4. Assignment: S1→I1 ... B4→I4. The motor contactor (=actuator) is connected to the output side of the logic module (Fig. 1.5). The linking between the input and output sides is carried out by the con-

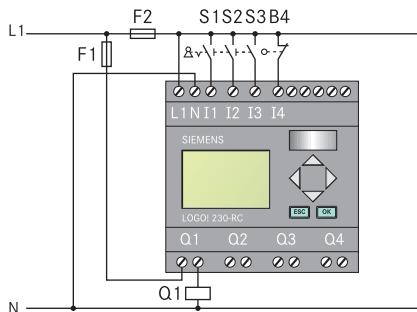


Fig. 1.5 Connection diagram of control system with switching relay