



ABC^{of}

Imaging in Trauma

EDITED BY

Leonard J. King

Consultant Radiologist
Department of Radiology
Southampton University Hospitals NHS Trust
Southampton, Hampshire
UK

David C. Wherry

Professor of Surgery
Department of Surgery
Uniformed Services University of the Health Sciences
Bethesda, MD
USA

 **WILEY-BLACKWELL**
A John Wiley & Sons, Ltd., Publication

BMJ|Books

This page intentionally left blank

ABC
Imaging in Trauma

ABC series

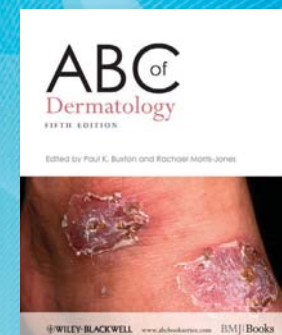
An outstanding collection of resources -
written by specialists for non-specialists

The *ABC series* contains a wealth of indispensable resources for GPs, GP registrars, junior doctors, doctors in training and all those in primary care

- Now fully revised and updated
- Highly illustrated, informative and practical source of knowledge
- An easy-to-use resource, covering the symptoms, investigations, treatment and management of conditions presenting in your day-to-day practice and patient support
- Full colour photographs and illustrations aid diagnosis and patient understanding of a condition

For more information on all books in the *ABC series*, including links to further information, references and links to the latest official guidelines, please visit:

www.abcbookseries.com



ABC^{of}

Imaging in Trauma

EDITED BY

Leonard J. King

Consultant Radiologist
Department of Radiology
Southampton University Hospitals NHS Trust
Southampton, Hampshire
UK

David C. Wherry

Professor of Surgery
Department of Surgery
Uniformed Services University of the Health Sciences
Bethesda, MD
USA

 **WILEY-BLACKWELL**
A John Wiley & Sons, Ltd., Publication

BMJ|Books

This edition first published 2010, © 2010 by Blackwell Publishing Ltd

BMJ Books is an imprint of BMJ Publishing Group Limited, used under licence by Blackwell Publishing which was acquired by John Wiley & Sons in February 2007. Blackwell's publishing programme has been merged with Wiley's global Scientific, Technical and Medical business to form Wiley-Blackwell.

Registered office: John Wiley & Sons Ltd, The Atrium, Southern Gate, Chichester, West Sussex, PO19 8SQ, UK

Editorial offices: 9600 Garsington Road, Oxford, OX4 2DQ, UK

The Atrium, Southern Gate, Chichester, West Sussex, PO19 8SQ, UK

111 River Street, Hoboken, NJ 07030-5774, USA

For details of our global editorial offices, for customer services and for information about how to apply for permission to reuse the copyright material in this book please see our website at www.wiley.com/wiley-blackwell

The right of the author to be identified as the author of this work has been asserted in accordance with the Copyright, Designs and Patents Act 1988.

All rights reserved. No part of this publication may be reproduced, stored in a retrieval system, or transmitted, in any form or by any means, electronic, mechanical, photocopying, recording or otherwise, except as permitted by the UK Copyright, Designs and Patents Act 1988, without the prior permission of the publisher.

Wiley also publishes its books in a variety of electronic formats. Some content that appears in print may not be available in electronic books.

Designations used by companies to distinguish their products are often claimed as trademarks. All brand names and product names used in this book are trade names, service marks, trademarks or registered trademarks of their respective owners. The publisher is not associated with any product or vendor mentioned in this book. This publication is designed to provide accurate and authoritative information in regard to the subject matter covered. It is sold on the understanding that the publisher is not engaged in rendering professional services. If professional advice or other expert assistance is required, the services of a competent professional should be sought.

The contents of this work are intended to further general scientific research, understanding and discussion only, and are not intended and should not be relied upon as recommending or promoting a specific method, diagnosis or treatment by physicians for any particular patient. The publisher and the author make no representations or warranties with respect to the accuracy or completeness of the contents of this work and specifically disclaim all warranties, including without limitation any implied warranties of fitness for a particular purpose. In view of ongoing research, equipment modifications, changes in governmental regulations and the constant flow of information relating to the use of medicines, equipment and devices, the reader is urged to review and evaluate the information provided in the package insert or instructions for each medicine, equipment or device for, among other things, any changes in the instructions or indication of usage and for added warnings and precautions. Readers should consult with a specialist where appropriate. The fact that an organization or website is referred to in this work as a citation and/or a potential source of further information does not mean that the author or the publisher endorses the information the organization or website may provide or recommendations it may make. Further, readers should be aware that internet websites listed in this work may have changed or disappeared between when this work was written and when it is read. No warranty may be created or extended by any promotional statements for this work. Neither the publisher nor the author shall be liable for any damages arising herefrom.

Library of Congress Cataloging-in-Publication Data

ABC of imaging in trauma / edited by Leonard J. King and David C. Wherry.

p. ; cm.

Includes index.

ISBN 978-1-4051-8332-1

1. Wounds and injuries—Imaging. I. King, Leonard J. II. Wherry, David.

[DNLM: 1. Wounds and Injuries—diagnosis. 2. Diagnostic Imaging. 3. Emergencies. WO 700 A1334 2010]

RD93.7.A23 2010

617.1'0754—dc22

2009013378

ISBN: 9781405183321

A catalogue record for this book is available from the British Library.

Set in 9.25 on 12 pt Minion by Toppan Best-set Premedia Limited

Printed and bound in Malaysia

Contents

- List of Contributors, vi
- Foreword, viii
- Acknowledgements, ix
- 1** Introduction, 1
Leonard J. King and David C. Wherry
- 2** Head and Neck Trauma, 4
Simon Barker, Jason H. M. Macdonald and Antonio Belli
- 3** Chest Trauma, 13
Ioannis Vlahos and Howard Champion
- 4** Abdominal Trauma, 24
Niall Power and Mark W. Bowyer
- 5** Pelvic Trauma, 35
Madeleine Sampson and Gavin Bowyer
- 6** Cervical Spine Trauma, 44
Sivadas Ganeshalingam, Muaaze Ahmad, Evan Davies and Leonard J. King
- 7** Thoracic and Lumbar Spine Trauma, 56
Sivadas Ganeshalingam, Muaaze Ahmad, Evan Davies and Leonard J. King
- 8** Vascular Trauma and Interventional Radiology, 63
Clare L. Bent and Matthew B. Matson
- 9** Upper Limb Injuries, 72
James Teh, David Gay and Richard A. Schaefer
- 10** Lower Limb Injuries, 86
David Elias and Richard A. Schaefer
- 11** Paediatric Trauma, 97
Mark Griffiths and Catherine Cord-Uday
- 12** Imaging Trauma in Pregnancy, 106
Mark P. Bernstein and Anne G. Rizzo
- 13** Bullets, Bombs and Ballistics, 113
Peter K. Ellis, Iain Gibb and James Ryan
- 14** Imaging of Major Incidents and Mass Casualty Situations, 122
James H. Street, Christopher Burns, Xzabia Caliste, Mark W. Bowyer and Leonard J. King
- Index, 128

List of Contributors

Muaaze Ahmad, MB ChB FRCR

Consultant Radiologist
The Royal London Hospital
Whitechapel
London
UK

Simon Barker, MB ChB FRCP FRCR

Consultant Neuroradiologist
Wessex Neurological Centre
Southampton General Hospital
Southampton, Hampshire
UK

Antonio Belli, MD FRCS FRCS(SN)

Senior Lecturer in Neurosurgery
Division of Clinical Neurosciences
University of Southampton
Southampton, Hampshire
UK

Clare L. Bent, MB BCh FRCR

Interventional Radiology Fellow
The Royal London Hospital
Whitechapel
London
UK

Mark P. Bernstein, MD

Assistant Professor of Radiology
Trauma and Emergency Radiology
NYU Medical Center/Bellevue Hospital
New York, NY
USA

Gavin Bowyer, MChir FRCS(Orth)

Consultant Orthopaedic Surgeon
Southampton University Hospitals NHS Trust
Southampton, Hampshire
UK

Mark W. Bowyer, MD FACS DMCC Colonel (Ret) USAF MC

Professor of Surgery
Chief, Division of Trauma and Combat Surgery
Director of Surgical Simulation
The Norman M. Rich Department of Surgery
Uniformed Services University of the Health Sciences
Bethesda, MD
USA

Christopher Burns, MD LCMDR USN MC

Surgical Resident
National Naval Medical Center
Bethesda, MD
USA

Xzabia Caliste, MD

Surgical Resident
Department of Trauma and Acute Care Surgery
Washington Hospital Center
Washington, DC
USA

Howard Champion, LRCP MRCS DMCC FRCS

Professor of Surgery and Senior Adviser in Trauma
Uniformed Services University of the Health Sciences
Bethesda, MD
USA

Catherine Cord-Uday, MBBS FRACS(Paed Surg)

Consultant Surgeon
Flinders Medical Centre
Bedford Park
Adelaide, SA
Australia

Evan Davies, BM FRCS Ed(Tr & Orth)

Consultant Orthopaedic Surgeon
Southampton University Hospitals NHS Trust
Southampton, Hampshire
UK

David Elias, MBBS BSc MRCP FRCR

Consultant Musculoskeletal Radiologist
Department of Diagnostic Imaging
King's College Hospital NHS Foundation Trust
London
UK

Peter K. Ellis, MB BCh MRCP FRCR FFRRCSI

Consultant Radiologist
Royal Victoria Hospital
Belfast, Northern Ireland
UK

Sivadas Ganeshalingam, MA MBBS FRCS FRCR

Radiology Fellow
The Royal London Hospital
Whitechapel
London
UK

David Gay, MB BS FRCR

Fellow in Musculoskeletal Radiology
Nuffield Orthopaedic Centre
Oxford, Oxfordshire
UK

Iain Gibb (Lieutenant Colonel), MB ChB FRCS FRCR RAMC

Consultant Radiologist and Army Consultant Advisor in Radiology
Royal Hospital Haslar
Gosport, Hampshire
UK

Mark Griffiths, MRCP FRCR

Consultant Radiologist
Southampton University Hospitals NHS Trust
Southampton, Hampshire
UK

Leonard J. King, MB ChB FRCP FRCR

Consultant Radiologist
Department of Radiology
Southampton University Hospitals NHS Trust
Southampton, Hampshire
UK

Graham Lloyd-Jones, BA MBBS MRCP FRCR

Specialist Registrar in Radiology
Southampton University Hospitals NHS Trust
Southampton, Hampshire
UK

Jason H. M. Macdonald, MB BS MRCP FRCR

Specialist Registrar in Neuroradiology
Wessex Neurological Centre
Southampton General Hospital
Southampton, Hampshire
UK

Matthew B. Matson, MRCP FRCR

Consultant Interventional Radiologist
Royal London Hospital
Whitechapel
London
UK

Niall Power, MRCPI FRCR

Consultant Radiologist
St Bartholomew's and The Royal London Hospitals
London
UK

Anne G. Rizzo, MD FACS

Associate Professor of Surgery
Virginia Commonwealth University School of Medicine
Richmond, VA
USA; *and*
Uniformed Services University of the Health Sciences
Bethesda, MD
USA

James Ryan, OstJ MCh FRCS DMCC FFAEM(Hon)

Emeritus Professor of Conflict Recovery
University College London and St George's University of London
London, UK; *and*
International Professor of Surgery
Uniformed Services University of the Health Sciences
Bethesda, MD
USA

Madeleine Sampson, MB ChB FRCP FRCR

Consultant Radiologist
Southampton University Hospitals NHS Trust
Southampton, Hampshire
UK

Richard A. Schaefer, MD MPH DMCC COL MC USA

Associate Professor of Surgery
Chief, Division of Orthopaedic Surgery
Norman M. Rich Department of Surgery
Uniformed Services University of the Health Sciences
Bethesda, MD
USA

James H. Street, MD

Department of Trauma and Acute Care Surgery
Washington Hospital Center
Washington, DC
USA

James Teh, MB BS BSc MRCP FRCR

Consultant Musculoskeletal Radiologist
Nuffield Orthopaedic Centre
Oxford, Oxfordshire
UK

Ioannis Vlahos, BSc MBBS MRCP FRCR

Consultant Thoracic Radiologist
St George's NHS Trust
London, UK; *and*
Assistant Professor
New York University
New York, NY
USA

David C. Wherry, MD FACS FRCS LRCP DMCC

Professor of Surgery
Uniformed Services University of the Health Sciences
Bethesda, MD
USA

Foreword

Some four decades ago, as a recently qualified doctor, I managed victims of trauma without the benefit of trauma systems, without well tried management protocols and without today's imaging technology. Digital imaging did not exist and "urgent" X-ray films were often still wet from the chemical processor, making interpretation less than optimal. Computed tomography and magnetic resonance imaging were still prototypes or on the physicist's drawing board and ultrasound scanning was in its infancy. Digital, whole-body scanners, such as the Lodox Statscanner, were something approaching science fiction. In the intervening period between then and now, trauma care, like many other aspects of medicine, has progressed immeasurably, as has the part played by imaging technology and techniques.

It is incumbent on all who provide emergency, in-hospital trauma care to be aware of the current range of diagnostic and therapeutic techniques that radiology and radiologists bring to the management of trauma. This short, but comprehensive book, the *ABC of Imaging in Trauma*, will do exactly that.

After reading this book, medical personnel will have an understanding of current imaging concepts *and* their clinical relevance, a point well made by the book's editors in their introductory chapter. They also go on to point out that the fundamental goals of imaging are assisting staff in quickly identifying the range and severity of injuries and, where possible, intervening to arrest life-threatening haemorrhage. They also endorse the point: imaging techniques are there to complement clinical skills and acumen, not to replace them.

The fundamental aim of this book is to act as a practical guide on the scope and interpretation of emergency imaging procedures used in assessing the severely injured. It more than achieves this

in a host of ways, the more outstanding being: the key points summary boxes at the beginning of each chapter; discussion of relevant clinical and demographic information before going on to discuss imaging techniques; and the richness and quality of the illustrations and line diagrams. These factors also add to the ease of finding relevant information.

It is of some import that the last four chapters of this book cover paediatric trauma, imaging trauma in pregnancy, ballistics and blast injury and imaging of major incidents and mass casualty situations. Managing trauma in children and pregnant women can be particularly trying. This book provides a systematic review and excellent short guide to imaging techniques in both situations. Major incidents are now almost commonplace. Knowledge of the role of imaging in casualty triage in such incidents, is one key to saving lives. This book provides that knowledge.

Those who become victims of severe trauma, whether civilian or military, will have the best outcome if cared for by experienced, multidisciplinary teams working to well-tried protocols. One of these protocols is what this excellent book is about: a guide to the place of the many forms of imaging available in trauma management algorithms.

All who are interested in, or have a role in hospital-based trauma care, should read this book. It will make them better carers.

My own anticipation is that the next edition will be even better.

P. Roberts, CBE MS FRCS
Professor of Military Surgery Emeritus
Royal College of Surgeons of England
December 2009

Acknowledgements

The editors would like to thank Professor Norman Rich and the Department of Surgery at the Uniformed Services University of Health Sciences, Bethesda, Maryland, for their assistance in the

production of this book, and Dr Graham Lloyd-Jones for his assistance in the production of illustrations.

This page intentionally left blank

CHAPTER 1

Introduction

Leonard J. King¹ and David C. Wherry²

¹Southampton University Hospitals NHS Trust, Southampton, Hampshire, UK

²Uniformed Services University of the Health Sciences, Bethesda, MD, USA

Trauma is a leading cause of morbidity and mortality in the developed world, accounting for 39 deaths per 100 000 population in the United States in 2005 and around 800 000 deaths per year in Europe. Deaths resulting from trauma typically follow a tri-modal distribution (Figure 1.1). The first peak, which accounts for 50% of all trauma deaths, occurs within the first few minutes after injury. Very few of these victims can be salvaged and thus prevention is the key to significantly decreasing the rate of immediate deaths. The second peak occurs from a few minutes up to several hours after injury, often due to uncontrolled bleeding, and accounts for 30% of trauma-related mortalities. With appropriate medical care many of these patients can be saved by prompt identification and management of correctable injuries. The last peak occurs days to weeks after the injury. Outcome during this period of late deaths depends in part on how cases are managed in the preceding periods.

Recognition that trauma care was previously fragmented and disorganized with poor outcomes has helped to stimulate innovations in trauma care including trained paramedics, advanced trauma life support (ATLS) training for surgeons and in-house response teams in many hospitals. These developments, supported by technological advances including imaging techniques, have led to an improvement in the quality of emergency care. Nevertheless, motor vehicular collisions, domestic and industrial accidents, assaults, gunshot wounds and injuries related to acts of terrorism continue to challenge the management of trauma by medical teams throughout the world.

During the hospital phase of resuscitation, modern technology and medical facilities should complement the physician's clinical skills to improve decision making for trauma patients. There are a number of different imaging modalities that can be used to assist in the management of these patients, each with a variety of strengths and weaknesses. Plain radiographs remain a useful tool, particularly for the assessment of limb fractures and dislocations. In recent years, however, there have been significant developments in the imaging of major trauma, particularly with the introduction of multidetector computed tomography (MDCT), which allows rapid acquisition of detailed whole body cross-sectional imaging.

Coupled with advances in post-processing techniques, MDCT now also allows the routine application of computer-generated high-quality multiplaner reformat (MPR) and three-dimensional volume-rendered images in addition to the axial plane images (Figure 1.2). This new technology has redefined the role of plain radiographs, ultrasound and computed tomography in the evaluation of victims of major trauma. At institutions where the full range of diagnostic imaging facilities are readily available, whole body MDCT has become the imaging investigation of choice in stable patients following the initial ATLS recommended trauma series (chest, lateral cervical spine and pelvis). Some trauma centres are also fortunate enough to have CT within the emergency department and are advocating CT for all but the most unstable trauma patients, a policy which is not suitable for many other hospitals where CT facilities are remote from the resuscitation area or may not be immediately available for an unstable trauma patient. In such circumstances and in more austere situations, alternative imaging strategies will need to be employed, including additional plain radiographs, ultrasound, intravenous urography and on-table in-theatre angiography.

Ultrasound has been used in the investigation of abdominal trauma since the 1970s and interest grew in the 1990s with the availability of hand-held ultrasound machines and the development of the limited focused assessment of sonography in trauma (FAST) technique (Figure 1.3). The FAST technique enables non-radiologists with limited training to perform a rapid ultrasound examination in the resuscitation room looking for free intraperitoneal fluid (Figure 1.4) with a reasonable degree of accuracy. FAST can be used to triage a haemodynamically unstable patient with significant free fluid to surgery; however, the absence of free fluid does not exclude a significant intra-abdominal injury requiring surgical intervention. Even in the hands of experienced observers the sensitivity of ultrasound for demonstrating organ lacerations and mesenteric or retroperitoneal injury is poor and thus it cannot be routinely used to exclude injury as a stand-alone technique. Where facilities are limited and no CT is available, a policy of admission for observation and repeat ultrasound by an experienced operator can be used but should not be considered best practice.

Imaging findings in conjunction with clinical assessment can be crucial in providing the critical information required to make key management decisions. Thus, an understanding of current trauma

imaging concepts and their clinical relevance is essential for all medical personnel involved in the immediate hospital care of trauma patients whose outcome may depend on rapid assessment of the nature and severity of their injuries, allowing appropriate medical management and surgical and non-surgical intervention.

Although the precise role of imaging and the choice of modality will vary depending on the clinical scenario and the availability of equipment and local expertise, the fundamental goals remain the

same – that is, assisting clinical staff in rapidly identifying the range and severity of injuries in the trauma patient and, where possible, intervening to arrest life-threatening haemorrhage with use of endovascular procedures. It is important for those involved in trauma care to recognize the place of imaging in relation to other clinical activities and how it fits into the clinical algorithm. The ATLS approach in trauma care is summarized in Box 1.1.

Although there are helpful published criteria for determining the need for cranial and cervical CT scanning following trauma, there are as yet no universally accepted criteria for determining when whole body CT is indicated, and local policies will vary. Most patients are triaged to CT on the basis of mechanism of injury, such as a high-velocity motor vehicle collision, and an initial clinical assessment indicating significant injury, particularly where there is evidence of two or more anatomically remote injuries, for example head injury plus a pelvic fracture or chest injury plus femoral fracture, etc. Whole body CT is also helpful in assessing patients with clinical signs of external trauma in whom the mechanism of injury is unknown, for example a patient found unconscious with bruising, lacerations or an obvious fracture and no available witness statement.

The purpose of this book is to provide a concise and practical guide to the role, performance and interpretation of emergency imaging procedures in patients with major trauma, such as those encountered in road traffic accidents, major disasters such as earthquakes and the victims of civilian or military conflict. The author-

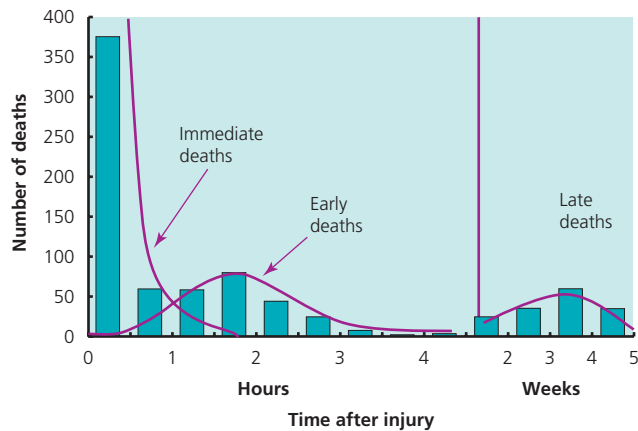


Figure 1.1 Graph illustrating the trimodal distribution of deaths following trauma. Graph taken from the ATLS Manual, 2005. Reproduced with the permission of the American College of Surgeons.

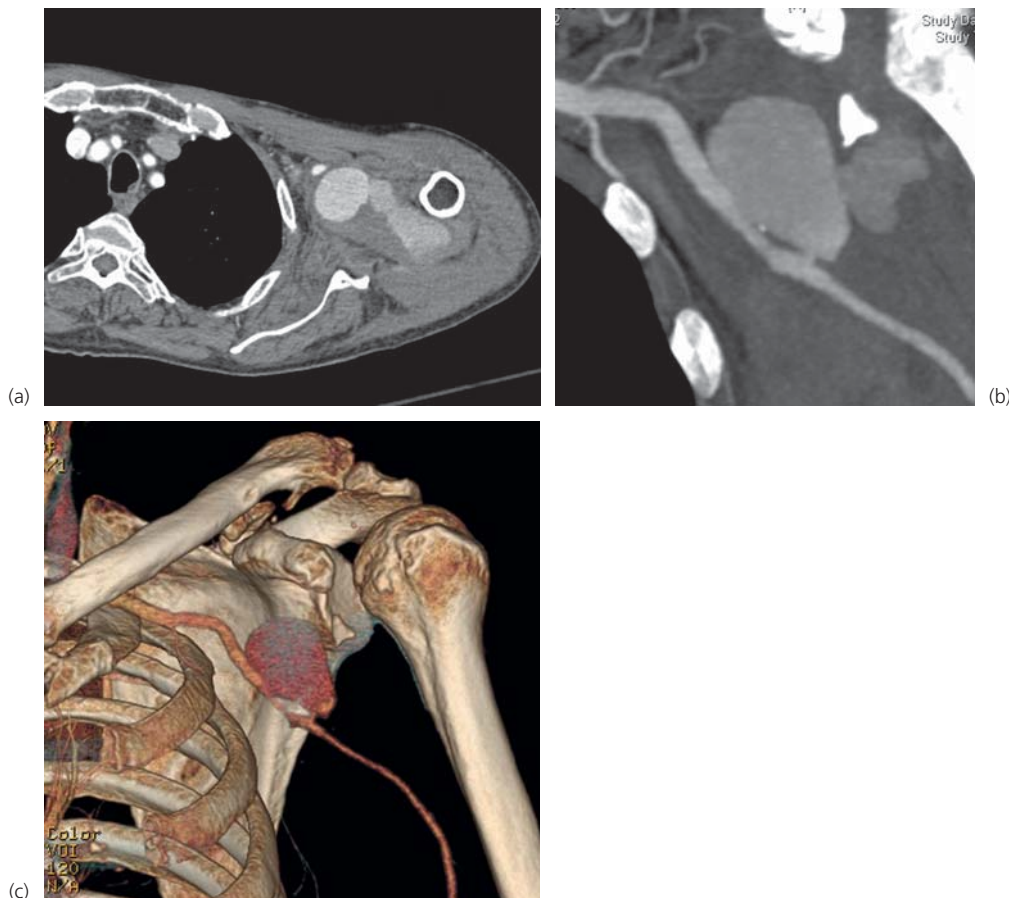


Figure 1.2 (a) Conventional axial images; (b) coronal multiplanar reformat; and (c) 3D volume-rendered CT images of a traumatic axillary artery pseudoaneurysm.

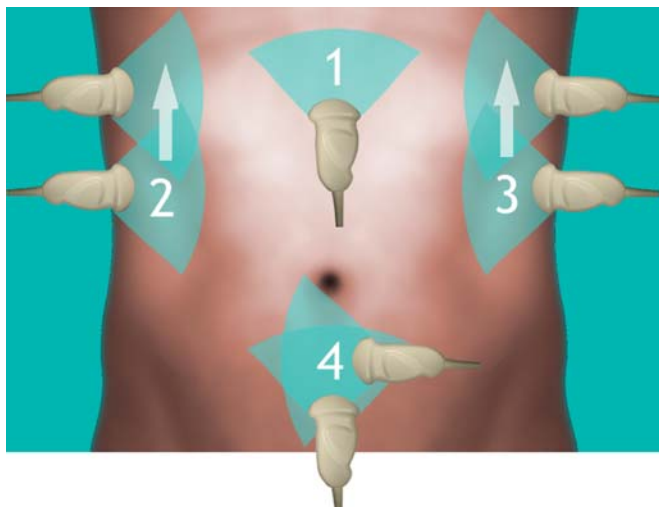


Figure 1.3 Ultrasound probe positions for a limited focused assessment of sonography in trauma ultrasound examination.

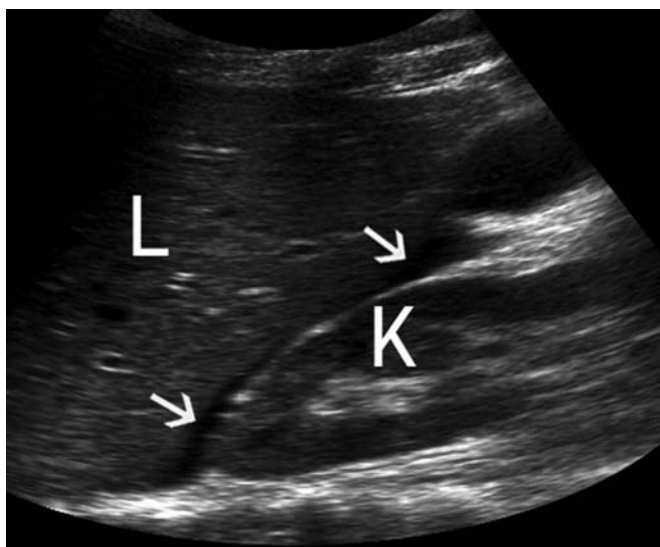


Figure 1.4 Longitudinal ultrasound image of the right upper quadrant demonstrating a small volume of free intraperitoneal fluid (arrows) between the liver (L) and the right kidney (K).

ship draws on a large number of experienced radiologists and surgeons who manage trauma in their daily practice, both in civilian and military settings. The boundaries of these two seemingly separate spheres are becoming increasingly blurred. Civilian casu-

Box 1.1 ATLS approach in trauma care

- A Primary survey and assessment of ABCDEs
 - 1 Airway with cervical spine protection
 - 2 Breathing
 - 3 Circulation with control of haemorrhage
 - 4 Disability: brief neurologic evaluation
 - 5 Exposure/Environment: undress patient and prevent hypothermia
- B Resuscitation
 - 1 Oxygenation and ventilation
 - 2 Shock management – IV fluids
 - 3 Management of life-threatening problems identified in the primary survey
- C Adjuncts to primary survey and resuscitation
 - 1 Monitoring
 - a Arterial blood gases
 - b Ventilation
 - c End tidal CO₂
 - d Electrocardiogram
 - e Pulse oximetry
 - f Blood pressure
 - 2 Urinary catheter and nasogastric tube placement
 - 3 Radiographic and other diagnostic studies
 - a Chest x-ray
 - b Pelvis x-ray
 - c Cervical spine x-ray (lateral)
 - d FAST or DPL
- D Secondary survey: total patient evaluation
 - 1 Head and skull
 - 2 Maxillofacial and intra-oral
 - 3 Neck
 - 4 Chest
 - 5 Abdomen (including back)
 - 6 Perineum/rectum/vagina
 - 7 Extremities
- E Adjuncts to the secondary survey (performed after life-threatening injuries have been identified and managed)
 - 1 Computed tomography
 - 2 Contrast studies
 - 3 Extremity radiographs
 - 4 Endoscopy and ultrasonography
- F Definitive care

alties from ballistic trauma and acts of terrorism are frequently encountered in cities throughout the world and lessons learned from medical care in military conflict have relevance in rural, urban and suburban non-military settings.