

Environmental Science

Shree Nath Singh *Editor*

Microbial Degradation of Synthetic Dyes in Wastewaters

 Springer

Environmental Science and Engineering

Environmental Science

Series editors

Rod Allan, Burlington, ON, Canada

Ulrich Förstner, Hamburg, Germany

Wim Salomons, Haren, The Netherlands

More information about this series at <http://www.springer.com/series/3234>

Shree Nath Singh
Editor

Microbial Degradation of Synthetic Dyes in Wastewaters

 Springer

Editor
Shree Nath Singh
Plant Ecology and Environmental Science
Division
CSIR—National Botanical Research
Institute
Lucknow, Uttar Pradesh
India

ISSN 1431-6250
ISBN 978-3-319-10941-1 ISBN 978-3-319-10942-8 (eBook)
DOI 10.1007/978-3-319-10942-8

Library of Congress Control Number: 2014951157

Springer Cham Heidelberg New York Dordrecht London

© Springer International Publishing Switzerland 2015

This work is subject to copyright. All rights are reserved by the Publisher, whether the whole or part of the material is concerned, specifically the rights of translation, reprinting, reuse of illustrations, recitation, broadcasting, reproduction on microfilms or in any other physical way, and transmission or information storage and retrieval, electronic adaptation, computer software, or by similar or dissimilar methodology now known or hereafter developed. Exempted from this legal reservation are brief excerpts in connection with reviews or scholarly analysis or material supplied specifically for the purpose of being entered and executed on a computer system, for exclusive use by the purchaser of the work. Duplication of this publication or parts thereof is permitted only under the provisions of the Copyright Law of the Publisher's location, in its current version, and permission for use must always be obtained from Springer. Permissions for use may be obtained through RightsLink at the Copyright Clearance Center. Violations are liable to prosecution under the respective Copyright Law.

The use of general descriptive names, registered names, trademarks, service marks, etc. in this publication does not imply, even in the absence of a specific statement, that such names are exempt from the relevant protective laws and regulations and therefore free for general use.

While the advice and information in this book are believed to be true and accurate at the date of publication, neither the authors nor the editors nor the publisher can accept any legal responsibility for any errors or omissions that may be made. The publisher makes no warranty, express or implied, with respect to the material contained herein.

Printed on acid-free paper

Springer is part of Springer Science+Business Media (www.springer.com)

*To
parents in heavenly abode*

Preface

Unlike natural dyes which are derived from plants, vegetables, and some minerals, synthetic dyes are manufactured by chemical processes and are commonly used for dyeing and printing in a wide range of industries. They are originally derived from coal tar derivatives, but are now synthesized from benzene and its derivatives. Synthetic dyes are usually named after the chemical structure of their particular chromophore group. The first synthetic dye, mauve, was discovered way back in 1856 by W.H. Perkin when he attempted to synthesize quinine.

Now, different synthetic dyes are produced, such as acid dyes, azoic dyes, basic dyes, chrome dyes, diazo dyes, direct dyes, disperse dyes, reactive dyes, sulfur dyes, and vat dyes. These dyes are widely used in different industries for dyeing cloth, paper, food, wood, etc. Among these chemical dyes, azo dyes are the most commonly used in dyeing units. There are more than 10,000 dyes as of now and their production has already exceeded 735 metric tons globally. Since synthetic dyes are cheaper, brighter, faster, and easier to apply to the fabric, they have changed the entire scenario worldwide.

On the other hand, dyeing industries discharge an enormous amount of synthetic dyes in wastewaters which are very toxic to both animals and plants. In order to remove synthetic dyes from wastewaters, adsorption on various sorbents and chemical decomposition by oxidation and photo-degradation are widely used. However, microbial degradation or decolorization, employing activated sludge, pure cultures and microbial consortia, degradative enzymes, etc., has been found self-driven, cost-effective, and also eco-friendly.

Therefore, I endeavored to compile the latest state-of-art on the microbial degradation of synthetic dyes in wastewaters coming from dyeing units in an edited volume which will serve as a ready reckoner to scientists, environmentalists, policy makers, teachers, students, industrialists, NGOs, and others concerned.

In this attempt, I would like to profusely thank all the contributors for their prompt response and active participation by contributing review articles on different aspects of microbial degradation of synthetic dyes. Besides, I also acknowledge the research scholars associated with me, Ms. Shweta Mishra, Ms. Nitanshi Jauhari, Mrs. Babita Kumari, and Ms. Divyata Maurya (trainee) for their academic and

technical support. Untiring service, provided by Mr. Dilip Chakraborty in preparing the manuscript meticulously, is also deeply acknowledged.

Lastly, I would also like to thank my family members: Mrs. Manorama Singh (wife), Ragini (daughter), and her kids Antra and Avantika, and Pritish (son) for their inspiration, endurance, and moral support to me in this endeavor.

S.N. Singh

Contents

Mycoremediation of Synthetic Dyes: An Insight into the Mechanism, Process Optimization and Reactor Design	1
Prachi Kaushik and Anushree Malik	
Bacterial Enzymes and Multi-enzymatic Systems for Cleaning-up Dyes from the Environment.	27
Sónia Mendes, Maria Paula Robalo and Lígia O. Martins	
Bacterial Degradation of Azo Dye Containing Wastes	57
Shailesh R. Dave, Tallika L. Patel and Devayani R. Tipre	
Microbial Degradation of Basic Dyes in Wastewaters	85
C. Ganesh Kumar and Poornima Mongolla	
Reductive Decolorization of Azo Dye by Bacteria	111
Guangfei Liu, Jiti Zhou, Jing Wang, Xin Zhang, Bin Dong and Ning Wang	
Congo Red Decolorizing Bacteria from Paper Factory Effluent	135
Aileen C. Jalandoni-Buan, Anna Lynn A. Decena-Soliven, Ernelea P. Cao, Virginia L. Barraquio and Wilfredo L. Barraquio	
Bacterial Enzymes and Their Role in Decolorization of Azo Dyes.	149
Amar A. Telke, Avinash A. Kadam and Sanjay P. Govindwar	
Microbial Decolorization of Triphenylmethane Dyes	169
Anna Jasińska, Katarzyna Paraszkiwicz, Mirosława Słaba and Jerzy Długoński	

Textile Dyes Degradation: A Microbial Approach for Biodegradation of Pollutants.	187
Lokendra Singh and Ved Pal Singh	
Microbe-Mediated Degradation of Synthetic Dyes in Wastewater	205
Maulin P. Shah	
Bacterial Degradation of Textile Dyes.	243
Kisan M. Kodam and Yogesh M. Kolekar	
Application of Extremophilic Microorganisms in Decolorization and Biodegradation of Textile Wastewater	267
M.A. Amoozegar, M. Mehrshad and H. Akhoondi	
The Biodegradation of Azo Dyes by Actinobacteria.	297
Azeem Khalid and Shahid Mahmood	
Degradation of Azo Dyes by White-Rot Fungi.	315
Susana Rodríguez-Couto	
Degradation of Anthroquinone Dyes Stimulated by Fungi	333
S.N. Singh, Shweta Mishra and Nitanshi Jauhari	
Index	357

Contributors

H. Akhoondi Extremophiles Laboratory, Department of Microbiology, Faculty of Biology and Center of Excellence in Phylogeny of Living Organisms, College of Science, University of Tehran, Tehran, Iran

M.A. Amoozegar Extremophiles Laboratory, Department of Microbiology, Faculty of Biology and Center of Excellence in Phylogeny of Living Organisms, College of Science, University of Tehran, Tehran, Iran

Virginia L. Barraquio Animal and Dairy Sciences Cluster, Dairy Training and Research Institute, College of Agriculture, University of the Philippines Los Baños, Laguna, Philippines

Wilfredo L. Barraquio Institute of Biology, College of Science, University of the Philippines Diliman, Quezon City, Philippines

Ernelea P. Cao Natural Sciences Research Institute, College of Science, University of the Philippines Diliman, Quezon City, Philippines

Shailesh R. Dave Department of Microbiology and Biotechnology, School of Sciences, Gujarat University, Ahmedabad, India

Anna Lynn A. Decena-Soliven Outsourcing and Manufacturing Solutions, Inc. (OMSI), Taguig, Metro Manila, Philippines

Jerzy Długoński Department of Industrial Microbiology and Biotechnology, Faculty of Biology and Environmental Protection, University of Lodz, Lodz, Poland

Bin Dong Key Laboratory of Industrial Ecology and Environmental Engineering, Ministry of Education, School of Environmental Science and Technology, Dalian University of Technology, Dalian, China

Sanjay P. Govindwar Department of Biochemistry, Shivaji University, Kolhapur, India

Aileen C. Jalandoni-Buan Outsourcing and Manufacturing Solutions, Inc. (OMSI), Taguig, Metro Manila, Philippines

Anna Jasińska Department of Industrial Microbiology and Biotechnology, Faculty of Biology and Environmental Protection, University of Lodz, Lodz, Poland

Nitanshi Jauhari Plant Ecology and Environmental Science Division, CSIR—National Botanical Research Institute, Lucknow, India

Avinash A. Kadam Department of Environmental Engineering, Kyungpook National University, Buk-Gu, Daegu, Republic of Korea

Prachi Kaushik Applied Microbiology Laboratory, Centre for Rural Development and Technology, Indian Institute of Technology Delhi, New Delhi, Hauz Khas, India

Azeem Khalid Department of Environmental Sciences, PMAS Arid Agriculture University, Rawalpindi, Pakistan

Kisan M. Kodam Biochemistry Division, Department of Chemistry, Savitribai Phule Pune University, Pune, India

Yogesh M. Kolekar Biochemistry Division, Department of Chemistry, Savitribai Phule Pune University, Pune, India; Division of Biochemical Sciences, CSIR—National Chemical Laboratory, Pune, India

C. Ganesh Kumar Biotechnology Laboratory, Medicinal Chemistry and Pharmacology Division, CSIR—Indian Institute of Chemical Technology, Hyderabad, India

Guangfei Liu Key Laboratory of Industrial Ecology and Environmental Engineering, Ministry of Education, School of Environmental Science and Technology, Dalian University of Technology, Dalian, China

Shahid Mahmood Department of Environmental Sciences, PMAS Arid Agriculture University, Rawalpindi, Pakistan

Anushree Malik Applied Microbiology Laboratory, Centre for Rural Development and Technology, Indian Institute of Technology Delhi, New Delhi, Hauz Khas, India

Lígia O. Martins Instituto de Tecnologia Química e Biológica, Universidade Nova de Lisboa, Oeiras, Portugal

M. Mehrshad Extremophiles Laboratory, Department of Microbiology, Faculty of Biology and Center of Excellence in Phylogeny of Living Organisms, College of Science, University of Tehran, Tehran, Iran

Sónia Mendes Instituto de Tecnologia Química e Biológica, Universidade Nova de Lisboa, Oeiras, Portugal

Shweta Mishra Plant Ecology and Environmental Science Division, CSIR—National Botanical Research Institute, Lucknow, India

Poornima Mongolla Biotechnology Laboratory, Medicinal Chemistry and Pharmacology Division, CSIR—Indian Institute of Chemical Technology, Hyderabad, India

Katarzyna Paraszkiwicz Department of Industrial Microbiology and Biotechnology, Faculty of Biology and Environmental Protection, University of Lodz, Lodz, Poland

Tallika L. Patel Department of Microbiology and Biotechnology, School of Sciences, Gujarat University, Ahmedabad, India

Maria Paula Robalo Área Departamental de Engenharia Química, Instituto Superior de Engenharia de Lisboa, Rua Conselheiro Emídio Navarro, Lisbon, Portugal; Centro de Química Estrutural, Instituto Superior Técnico, Universidade de Lisboa, Lisbon, Portugal

Susana Rodríguez-Couto Unit of Environmental Engineering, CEIT, San Sebastian, Spain; Basque Foundation for Science, Ikerbasque, Bilbao, Spain

Maulin P. Shah Industrial Waste Water Research Laboratory, Division of Applied and Environmental Microbiology Enviro Technology Limited, GIDC, Gujarat, India

Lokendra Singh Department of Botany, Kumaun University, Nainital, Uttarakhand, India

Ved Pal Singh Department of Botany, University of Delhi, Delhi, India

S.N. Singh Plant Ecology and Environmental Science Division, CSIR—National Botanical Research Institute, Lucknow, India

Mirosława Słaba Department of Industrial Microbiology and Biotechnology, Faculty of Biology and Environmental Protection, University of Lodz, Lodz, Poland

Amar A. Telke Center for System Microbiology, Department of System Biology, Denmark Technical University, Kongens Lyngby, Denmark

Devayani R. Tipre Department of Microbiology and Biotechnology, School of Sciences, Gujarat University, Ahmedabad, India

Ning Wang Key Laboratory of Industrial Ecology and Environmental Engineering, Ministry of Education, School of Environmental Science and Technology, Dalian University of Technology, Dalian, China

Jing Wang Key Laboratory of Industrial Ecology and Environmental Engineering, Ministry of Education, School of Environmental Science and Technology, Dalian University of Technology, Dalian, China

Xin Zhang Key Laboratory of Industrial Ecology and Environmental Engineering, Ministry of Education, School of Environmental Science and Technology, Dalian University of Technology, Dalian, China

Jiti Zhou Key Laboratory of Industrial Ecology and Environmental Engineering, Ministry of Education, School of Environmental Science and Technology, Dalian University of Technology, Dalian, China

Mycoremediation of Synthetic Dyes: An Insight into the Mechanism, Process Optimization and Reactor Design

Prachi Kaushik and Anushree Malik

1 Introduction

Dye bearing industrial effluent can cause environmental problems unless it is properly treated before disposal. The complex aromatic structure of the dyes is resistant to light, biological activity, ozone and other degradative environmental conditions. Thus, conventional wastewater treatment is less effective. There are various methods for the treatment of wastewater (Forgacs et al. 2004), which broadly fall into three categories: physical (adsorption, coagulation/flocculation, membrane filtration etc.), chemical (chemical oxidation, photo-catalytic oxidation, electrolysis, Fenton reagent etc.) and biological (biosorption, enzymatic degradation etc.). Present treatment processes are largely based on the principles of flocculation with lime and ferrous sulphate, adsorption on activated carbon, nano-filtration, reverse osmosis and solar evaporation (Ranganathan et al. 2007). But owing to their high maintenance cost, prerequisite for preliminary treatment steps and land requirement, these are not economically viable for small enterprises and hence, there is a need to look for suitable decentralized technologies. Being eco-friendly, microbial decolorization (through bacteria, fungi and algae) is receiving much attention for the treatment of textile dye waste water (Sarayu and Sandhya 2012).

Considering the choice of microbes and the characteristics of textile effluent, fungi can be considered as the most suitable organism for the remediation purpose. Owing to their high cell-to-surface ratio, these organisms have a greater contact with the environment. Also, the extra-cellular nature of fungal enzymes allows them to thrive and tolerate high concentrations of toxicants. The fungi have a strong potential for mycoremediation in non-sterile open environment (Fig. 1). The mycelial growth gives a competitive advantage over single cells, such as bacteria and yeasts, especially with

P. Kaushik · A. Malik (✉)

Applied Microbiology Laboratory, Centre for Rural Development and Technology,
Indian Institute of Technology Delhi, New Delhi 110016, Hauz Khas, India
e-mail: anushree_malik@yahoo.com

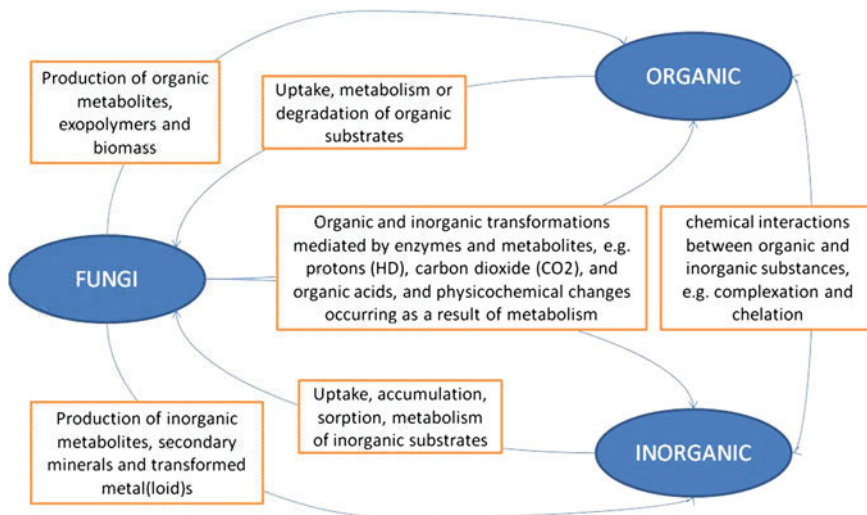


Fig. 1 Simple model of fungal action on naturally-occurring and/or anthropogenically—derived organic and inorganic substrates (modified after Gadd 2007)

respect to the colonization of insoluble substrates. They have high surface-to-cell ratio characteristics of filaments that maximize both mechanical and enzymatic contact with the substrate. The extracellular nature of the degradative enzymes enables fungi to tolerate higher concentrations of toxic chemicals than what would be possible, if these compounds had to be brought into the cell. In this case, insoluble compounds, that cannot cross a cell membrane, are also susceptible to attack.

A lot of research has focused on mycoremediation, which could offer an attractive decentralized system. However, there has not been much success in translating these results into actual applications. A critical insight into the mechanism or pathways of dye transformation as well as process optimization is important while designing the operational strategy for mycoremediation. Several analytical and statistical tools have been described in the recent studies to achieve this. Moreover, some studies focus on the appropriate bioreactor design as per the underlying mechanism of fungal dye decolorization, while a very few investigations are available on the management of the dye laden fungal biomass. This chapter describes the recent innovations and vital advancements in mycoremediation targeting the ease of application.

2 Mechanism of Dye Removal by Fungi

Researchers have been employing various fungi as listed in Table 1, for dye removal studies either in living or dead form (Kaushik and Malik 2009). Three principal mechanisms are involved during the dye removal process mediated by fungi; biosorption, bioaccumulation and biodegradation. Biosorption is a metabolically

Table 1 Application of various fungi in dye removal

Fungi	Dye	Mechanism	Reference
<i>Agaricus bisporus</i>	Reactive Red 2	Biosorption	Akar and Divriklioglu (2010)
<i>Rhizopus arrhizus</i>	Yellow RL	Biosorption	Aksu and Balibek (2010)
<i>Bjerkandera adusta</i>	Acid Blue 62	Biodegradation	Anastasi et al. (2010)
<i>A. lentulus</i>	Acid Navy Blue	Biosorption and Bioaccumulation	Kaushik and Malik (2010)
<i>Trametes trogii</i> <i>T. Villosa</i> <i>Coriolus versicolor</i>	Indigo carmine Anthraquinone Blue	Biodegradation	Levin et al. (2010)
<i>Aspergillus filiculoides</i>	Basic Orange	Biosorption	Tan et al. (2010)
<i>A. niger</i>	Reactive Black 5	Bioaccumulation	Taskin and Erdal (2010)
<i>A. versicolor</i>	Remazol Blue	Bioaccumulation	Tastan et al. (2010)
<i>A. niger</i>	Direct Blue 199	Biosorption	Xiong et al. (2010)
<i>A. ochraceus</i>	Methyl Orange	Biodegradation	Telke et al. (2010)
<i>Penicillium oxalicum</i>	Reactive Blue 21	Bioaccumulation	Xin et al. (2010)
<i>Irpex lacteus</i>	Isolan Dark Blue 2SGL	Biodegradation	Kalpna et al. (2010)
<i>A. niger</i>	Orange G	Biosorption	Sivasamy and Sundarabal (2011)
<i>Trichoderma</i> sp.	Acid Brilliant Red B	Bioaccumulation	Xin et al. (2012a)
<i>Magnusiomyces ingens</i>	Acid Red B	Biodegradation	Tan et al. (2014)

independent process which involves the binding of solutes to the fungal biomass and thus can occur in either living or dead biomass (Srinivasan and Viraraghavan 2010). Biodegradation is an energy intensive and metabolically dependent process, where the complex dye molecules are broken down into simpler molecules through the action of certain enzymes. Bioaccumulation is also energy and metabolically dependent process, where actively growing cells accumulate the pollutants inside their cytoplasm (Chojnacka 2010).

2.1 Dye Biosorption

Left over spent fungal biomass, which is a by-product of industrial fermentations, is a very good and cheap source to be used in extensive use for dye biosorption (Fomina and Gadd 2014). Various functional groups, that are present on the fungal

cell wall i.e. amino, carboxyl, thiol and phosphate groups, can bind dye molecules (Tan et al. 2011; Fan et al. 2012). Biosorption of dye molecules onto the surface of fungal cells is a quick process and often gets completed in a few hours. Dye biosorption process is also affected by various process parameters, such as pH, temperature, initial dye concentration and type of dye present in the solution (Srinivasan and Viraraghavan 2010). Therefore, to obtain efficient dye removal, it is necessary to optimize various process parameters. Moreover, selection of a fungal strain for dye biosorption should be made in a way that it is capable of removing wide variety of dyes belonging to different classes.

The biosorption capacity of biomass can be further increased by certain physical (drying, autoclaving) or chemical (organic, inorganic) pre-treatments (Viraraghavan and Srinivasan 2011). Immobilization in alginate beads (Prigione et al. 2008) or loofa-sponge (Iqbal and Saeed 2007) has been reported to enhance biosorption capacity. Biosorbent can be regenerated by treatment with certain chemicals, such as alkalis, chelating agents etc. Recovery of the adsorbent and dye makes the treatment process more economical. It is observed that most of the studies are performed with the help of dye solutions. However, mixed effluent from textile industries containing mixtures of dyes and certain other chemicals may interfere with the process of dye removal through biosorption. Therefore, more studies should be performed utilizing the mixtures of dyes and industrial effluent.

2.2 Dye Bioaccumulation

Majority of the reports, that report bioaccumulation as the principle mechanism for dye removal, are focused on the use of single cell fungi (Dias et al. 2010; Das et al. 2011) and cyanobacteria (Silva-Stenico et al. 2012). However, a few studies report bioaccumulation by mycelial fungi, such as *A. niger* (Taskin and Erdal 2010) and *P. oxalicum* (Xin et al. 2010). Bioaccumulation of dyes by fungi is mediated by initial biosorption to the fungal cell wall which is metabolism-independent and then accumulation into the cytoplasm which is metabolism-dependent (Wang and Hu 2008).

2.3 Dye Biodegradation

Biodegradation is described as the breakdown of chemical compounds which is mediated by the action of biological enzymes. Complete biodegradation is the total breakdown of organic molecules into water, carbon dioxide and/or any other inorganic end products which is known as mineralization. White-rot fungi secrete certain ligninolytic enzymes that bind non-specifically to the substrate. Therefore, they are capable of degrading a wide variety of recalcitrant compounds and complex mixtures of pollutants, such as dyes. Since these ligninolytic enzymes secreted

by fungi are extracellular, therefore, problem related to substrate diffusion limitation into the cell, which is commonly encountered in bacteria, is not observed in fungi. Also, enzyme secretion by white-rot fungi depends on nutrient limitation (nitrogen or carbon) and is not altered by the presence of pollutants. This implies that for dye removal through biodegradation as the principle mechanism, acclimatization of the fungi with the pollutants may be skipped (Ge et al. 2004). Laccase, Manganese Peroxidase (MnP), Manganese Independent Peroxidase (MIP), Lignin Peroxidase (LiP), Tyrosinase etc. are the various enzymes that are involved in the degradation of the dye.

For biodegradation, fungal cells have to be in their growing form. This limits their application in treatment of toxic dye effluents. Nevertheless, the enzyme activity is often not altered by the presence of other pollutants, but biosorption as a process is influenced by the factors, like ionic strength, ionic state of dye and biosorbent. Thus, biodegradation, as a means for dye removal, has its own advantages. The growth of the fungus, enzyme production and subsequent dye decolorization are effected by the culture conditions, like initial dye concentration, pH, agitation, media components, presence of heavy metals etc. (Martorell et al. 2012; Daâssi et al. 2013; Jin and Ning 2013; Moreira-Neto et al. 2013). Growth of the fungus is also affected by the nutritional conditions of the environment. Table 2 summarizes the key differences among three principle mechanisms for dye removal process. It is important to note that during the process of dye removal through fungi, multiple mechanisms may be operative either simultaneously or sequentially.

Table 2 Comparison between biosorption, bioaccumulation and biodegradation process (modified after Chojnacka 2010)

Biosorption	Bioaccumulation	Biodegradation
Passive process	Active process	Active process
Biomass is not alive	Biomass is alive	Biomass is alive
Dye molecules are bound with cellular surface	Dye molecules are bound with cellular surface and interior	Dye molecules are degraded by enzymes
Adsorption	Absorption	Extracellular degradation/ adsorption followed by degradation
Reversible process	Partially reversible process	Irreversible process
Nutrients are not required	Nutrients are required	Nutrients are required (nitrogen limiting conditions favourable)
Single-stage process	Double-stage process	Double-stage process
The rate is quick	The rate is slow	The rate is slow
Not controlled by metabolism	Controlled by metabolism	Controlled by metabolism
No danger of toxic effect	Danger of toxic effects caused by contaminants	Interference by contaminants, byproducts may be toxic
No cellular growth	Cellular growth occurs	Cellular growth occurs

For example, removal of Acid Navy Blue by *A. lentulus* pre dominantly followed bioaccumulation mechanism, while biosorption played a minor role (Kaushik and Malik 2010, 2013). Also, each mechanism i.e. biosorption, bioaccumulation or biodegradation, has its own advantages and limitations. Therefore, it is always beneficial to use a consortium of microbes for such treatment processes over pure cultures, as it promotes the dye removal process through multiple mechanisms, making it more efficient in terms of percentage removal, time required and supplementation needs.

3 Analytical Tools to Study Dye Removal Process

Monitoring of dye removal process is based on the study of dye concentration at a given time or by estimating the production of metabolites/intermediates or dye by products. Dye concentration can be estimated through various measurements, such as Total Organic Carbon (TOC), Chemical Oxygen Demand (COD) or by measuring absorbance of the solution at the absorption maxima of the dye with a UV-Vis spectrometer. However, these techniques are not selective in nature and affected by other contaminants that may be present in the solution. More specific analytical techniques have been used by the researchers to monitor the dye removal process as well as to determine the dye intermediates that are released as a result of degradation process. The choice of analytical technique depends on the type of dye removal process involved and type of the dye. These analytical techniques can be categorized into two types: separation techniques and spectroscopic techniques. Separation techniques include various chromatographic techniques, such as High Performance Liquid Chromatography (HPLC), Gas Chromatography Mass Spectrometry (GCMS), Liquid Chromatography Mass Spectrometry (LCMS), High Performance Thin Layer Chromatography (HPTLC) etc. which help in the identification of the intermediate compounds released during the dye removal process as well as the final degradation products formed as a result of biodegradation. Spectroscopic techniques, such as UV-Vis spectroscopy, have been widely used by the researchers to quantify the dye removal process in terms of reduction brought about in the absorbance value (at absorption maxima) of the dye. In addition to this, Fourier Transform Infra-Red Spectroscopy (FTIR) and Nuclear magnetic Resonance (NMR) have also been utilized as an essential tool for estimating the dye degradation pathway. A recent review by Fernández et al. (2010) has listed the advantages and limitations of these two types of analytical techniques in Table 3.

Apart from these techniques, enzymatic assays, that involve the detection of various dye degrading enzymes, have been used by the researchers to confirm biodegradation process during dye removal. Various white-rot fungi, such as *Trametes versicolor*, *Phanerochaete chrysosporium*, *Pleurotus ostreatus* etc., have been reported to produce extracellular ligninolytic enzymes, such as lignin peroxidase (LiP), laccase, manganese peroxidase (MnP) etc. which cause dye degradation. The assay to detect the presence of an enzyme is based on either of the

Table 3 Advantages and limitations of various analytical techniques (modified after Fernández et al. 2010)

Analytical techniques	Advantages	Limitations
Separation techniques (HPLC, GCMS etc.)	High selectivity	Analysis time can be high
	Degradation byproducts can be accurately identified with an MS detector	Samples normally need to be pretreated
		Organic solvents need to be used
Spectroscopic techniques (UV-vis, FTIR etc.)	Low analysis time	Low selectivity
	Sample pre-treatment is simple or not necessary	The presence of interferences (degradation byproducts) can lead to erroneous results
	Dyes can be determined on the catalyst surface (SERS)	Expensive deuterated solvents need to be used (NMR)
	Chemometrics can be used to simultaneously identify and quantify several dyes and intermediates	
Microscopic techniques	Short analysis time	Sample preparation required for electron microscopy
	Any morphological changes occurring on microbial biomass can be visually seen	Few techniques are only qualitative (except EDX)
Enzymatic techniques	Highly selective	Applicable in only live process
	Do not vary with microbe or substrate	Dependent on nutritional conditions
		Individual assay required for each enzyme

following two principles: disappearance of the substrate or the appearance of the new product, essentially a colored compound which can be quantified by spectroscopic techniques.

Table 4 shows various studies which adopted described analytical techniques in examining the dye removal process. Recently, use of high performance capillary electrophoresis has gained a lot of importance (Zhao et al. 2007; Lu et al. 2008) in determining the dye and their intermediates or by-products (which have ionic character). During dye degradation process, the dye peak undergoes a continuous change. Initially, it decreases and then certain new peaks appear which later on disappear due to the formation of small undetectable compounds. Use of a MS detector helps in a more accurate identification of such compounds. For the study of

Table 4 Different analytical techniques used to study dye removal process

Dye	Dye class	Microorganism	Removal process	Analytical technique to monitor dye removal process	Analytical technique to study intermediate formation	Degradation product	Reference
Disperse Orange 3	Azo	<i>Pleurotus ostreatus</i>	Biodegradation		GCMS, HPLC	4-nitroaniline, nitrobenzene, 4-nitrophenol, 4-nitroanisole	Zhao et al. (2006)
Orange G	Azo	<i>Trametes versicolor</i>	Biodegradation	UV-Vis	NMR		Casas et al. (2007)
Reactive Blue 25	Cu-phthalocyanin and monochlorotriazine	<i>Aspergillus ochraceus</i>	Biosorption and biodegradation	UV-Vis and enzyme assays (Lignin peroxidase, laccase, tyrosinase)	FTIR, GCMS, HPLC	Phthalimide, di-isobutyl phthalate	Parshetti et al. (2007)
Orange 3, Acid Orange 8, Food Yellow 3, 4-HABA	Sulfonated azo dyes	<i>Pleurotus ostreatus</i>	Biodegradation		Capillary electrophoresis—mass spectrometry (CE-MS)	4-hydroxy benzene sulfonic acid, 3-methyl 4-hydroxy benzenesulfonic acid, benzene sulfonic acid, 1-2-naphthoquinone 6-sulfonic acid and 3-methyl benzenesulfonic acid	Zhao et al. (2007)

(continued)

Table 4 (continued)

Dye	Dye class	Microorganism	Removal process	Analytical technique to monitor dye removal process	Analytical technique to study intermediate formation	Degradation product	Reference
Acid Orange 7, Acid Orange 8, Mordant Violet 5	Sulfonated phenylazo naphthol	<i>Pleurotus ostreatus</i>	Biodegradation		HPLC, capillary electrophoresis and CE-ESI-MS	Benzene sulfonic acid, 1,2 naphthoquinone	Lu et al. (2008)
Direct Violet 51	Azo dye	<i>Candida albicans</i>	Biodegradation	UV-Vis	FTIR		Vitor and Corso (2008)
Acid Blue 120	Azo	<i>Aspergillus lentulus</i>	Biosorption and Bioaccumulation	UV-Vis	FTIR		Kaushik and Malik (2010)
Amaranth	Azo	<i>Bjerkandera adusta</i>	Biodegradation	UV-Vis, enzymes assay for Peroxidase activity	HPLC, ESI-TOF-MS	Phenol, 4-nitrobenzene sulfonate	Gomi et al. (2011)
Rubine GFL	Azo	<i>Aspergillus ochraceus</i> and <i>Pseudomonas</i> sp.	Biodegradation	UV-Vis and enzyme assays (laccase, veratryl alcohol oxidase, azoreductase, NADH-DCIP reductase)	FTIR, GCMS, HPTLC		Lade et al. (2012)

(continued)

Table 4 (continued)

Dye	Dye class	Microorganism	Removal process	Analytical technique to monitor dye removal process	Analytical technique to study intermediate formation	Degradation product	Reference
Congo Red	Azo	<i>Alternaria alternata</i>	Biodegradation	UV-Vis, (SEM and light microscopy to study fungal morphology)	HPLC, FTIR		Chakraborty et al. (2013)

intermediate compounds from sulfonated azo dyes, electro spray ionization (ESI) source can be employed which causes minimal fragmentation of such dyes (Zhao et al. 2007; Lu et al. 2008; Gomi et al. 2011).

Apart from monitoring the dye removal process, the morphological changes in fungal biomass can also be a useful aid in establishing the correlation between dye removal process and the microbial agent present in the solution. Various microscopic techniques, such as light microscopy, scanning and transmission electron microscopy, may provide useful insights into the mechanism involved in the dye removal process. Biosorption or bioaccumulation process by fungal biomass can conclusively be explained through light microscopy techniques. Figure 2 shows the phase contrast micrographs of Acid Navy Blue laden pellets of *Aspergillus lentulus*. The size variation in the pellet structure, if any, resulting from various cultivation conditions, such as nutrient sources, can also be visualized through microscopy (Kaushik and Malik 2010b).

Chakraborty et al. (2013) used light microscopy to show the biosorption of Congo red dye on the biomass of *Alternaria alternata*. Also, SEM micrographs were used by Chakraborty et al. (2013) to describe the amorphous nature of the fungal biomass after dye removal process. Similarly, Transmission electron microscopy can also be utilized to examine the difference obtained in the morphological structure of the fungi prior to and after the biosorption of dye. Das et al. (2006) demonstrated with the help of TEM micrographs that the cells of *Rhizopus oryzae* in presence of Rhodamine B dye exhibit electron dense molecules mainly in

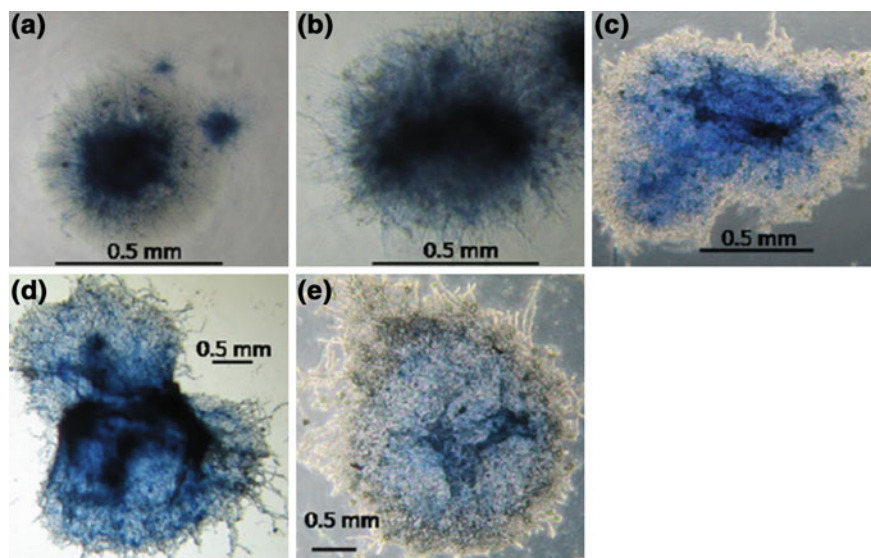


Fig. 2 Microscopic pictures of *A. lentulus* grown in different initial glucose concentrations: **a** 0 %, **b** 0.1 %, **c** 0.2 %, **d** 0.5 % and **e** 1 % on the pellet (Magnification: 10X) (Kaushik and Malik 2010b)

the region of cell surfaces, whereas these are absent in control cells. In living cells, the dye molecules accumulate in the cytoplasm as granules, whereas, in starved cells, dye molecules mainly bind on the cell surface and a very small amount is transported to the cytoplasm.

Moreover, any toxicity response, exhibited by the fungi towards the test dye, also becomes evident through these techniques. Figure 3 shows the difference in the mycelial structure of the fungus *Aspergillus lentulus* which was grown in the presence of various dyes (Kaushik and Malik 2013). The broad and flattened hyphae exhibited by *A. lentulus* in presence of dye Methylene Blue as compared to that shown in the presence of Acid Navy Blue and in absence of any dye, shows the toxicity of Methylene Blue dye to the fungi. SEM or TEM technique coupled with Energy Dispersive X-Ray (SEM-EDX/TEM-EDX) can be a useful tool for estimating and quantifying the presence of dye molecules on/inside the fungal biomass after dye biosorption (Kaushik 2011).

Thus, it can be concluded that the analytical techniques are an important tool to study the dye removal process and utilization of these techniques in combination can provide a detailed insight into the process of dye removal, its mechanism, dye degradation pathway and study of degradation metabolites. This can further aid in the development of suitable reactor design/technology for the treatment dye effluents.

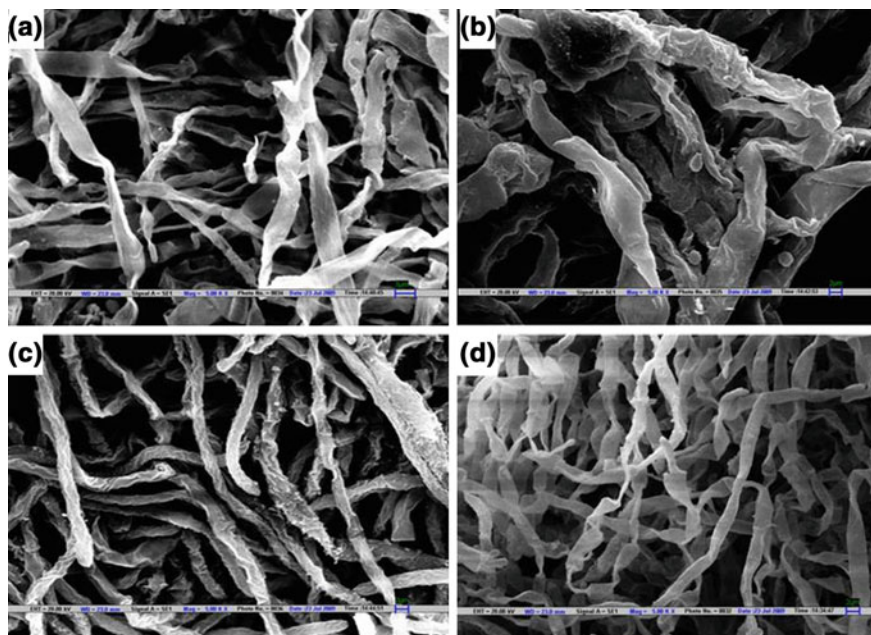


Fig. 3 SEM micrographs showing fungal pellets grown in different conditions **a** presence of Methylene Blue (10 mg l^{-1}), **b** presence of Methylene Blue (50 mg l^{-1}), **c** presence of Acid Navy Blue (100 mg l^{-1}) and **d** absence of dye (Magnification: X 5,000) (Kaushik and Malik 2013)

4 Statistical Tools Required for Process Optimization

Design of experiment (DOE) is an important tool to study any process involving multiple variables that affect it. Through this approach, a process under study is described through a mathematical model and an experimental design is created to obtain a set of experiments to collect the data to be analyzed using the model equations. DOE approach enables the researcher to optimize the conditions for maximizing the process and aids in selecting the principle factor affecting it. DOE methodology is superior to the conventional approach of one variable at a time (OVAT) analysis, being less labour intensive and time consuming. It has an added advantage of providing the interaction studies of various variables affecting the process which is not possible through OVAT analysis. The two most widely applied tools of DOE utilized in dye removal process are Taguchi method and response surface methodology (Fig. 4).

4.1 Response Surface Methodology (RSM)

RSM is a method that utilizes statistical and mathematical techniques to optimize a process in which the output or response is influenced by different factors or variables. RSM analyzes the effect of independent variables alone and in combination and generates a mathematical model (Bas and Boyaci 2007). The term independent variables refer to the experimental variables that can be changed independently of each other. In a typical dye removal process, these variables can be pH, temperature, initial dye concentration, nutrient concentration, contact time etc. A response is defined as a dependent variable which is measured as an output of the

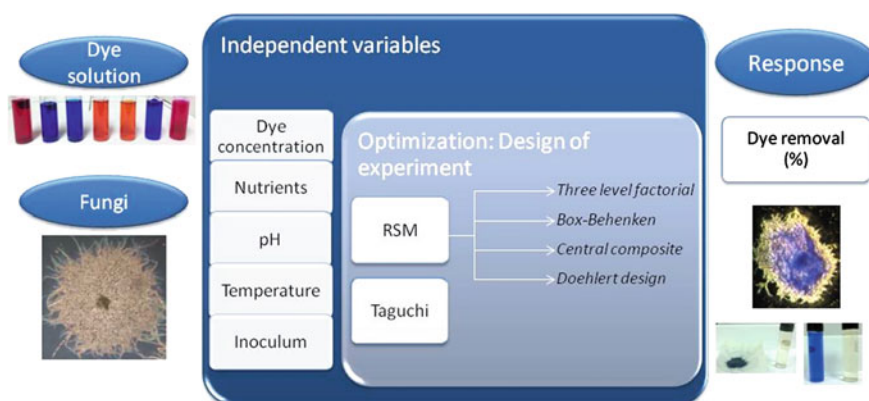


Fig. 4 Statistical approach involving design of experiment methodology for optimizing dye removal process

experiment. Percentage dye removal, residual dye concentration and biomass generated can be regarded as the response of a dye removal process. To obtain the best response value of dye removal process, the independent variables need to be optimized (Kaushik and Malik 2009). The optimization study using RSM can be divided into three stages. In the first stage, the independent variables and their levels are determined. Screening experiments are performed to determine the important parameters that influence the process of dye removal. Further, depending upon the direction in which these parameters affect the process, their levels (ranging from -1 to +1) are determined. In the second stage, the experimental design is selected and the model equation is predicted and verified. Generally a full quadratic equation (second order) is used in RSM.

$$y = \beta_0 + \sum_{j=1}^k \beta_j X_j + \sum_{j=1}^k \beta_{jj} X_j^2 + \sum_{i < j} \sum \beta_{ij} X_i X_j$$

In the third stage, responses of surface plot and contour plot are obtained and their optimum points are determined (Bas and Boyaci 2007). Many researchers have employed RSM to optimize the dye removal process by fungi in growing mode in terms of initial dye concentration (Alam et al. 2009; Gönen and Aksu 2009a; Sharma et al. 2009; Srinivasan and Murthy 2009; Das et al. 2010), pH (Sharma et al. 2009; Qu et al. 2010), temperature (Sharma et al. 2009; Qu et al. 2010) and nutritional conditions (Gönen and Aksu 2009b; Kaushik and Malik 2011; Aghaie-Khouzani et al. 2012; Papadopoulou et al. 2013). However, certain factors must be considered while selecting RSM for biological processes. For example, it is not necessary that all the systems, that show curved graph, fit to second order polynomial and thus require to be converted to other forms, such as the log values or by changing the range of parameters (Bas and Boyaci 2007). This limits its use in those biological processes which cannot be described by a second order polynomial equation.

4.2 Taguchi Method

Taguchi method was initially developed as a tool for improving the quality in engineering methodology and obtaining a robust design (Wang et al. 2002). However, it has been also employed to optimize the condition of dye removal process (Engin et al. 2008; Yildiz 2008). Daneshvar et al. (2007) applied Taguchi method in optimizing the process of biological degradation of Malachite Green with respect to temperature, initial pH, type of algae, dye concentration and time of reaction. Revankar and Lele (2007) optimized the fermentation medium for *Ganoderma* sp. to obtain the maximum removal of amaranth dye using Taguchi methodology.

Taguchi method of statistical optimization involves fractional factorial experimental design which is a part of total possible combinations which are required to estimate the important factors affecting the process and their interaction (Kim et al. 2004). Taguchi method utilizes orthogonal array method, the matrices of which vary with the number of factors and interactions. For instance, 8-trial orthogonal array (L-8 matrix) is used when the number of factors is less than 7 and 16-trial orthogonal array (L-16 matrix) is used when the number of factors is less than 15. Taguchi method takes into account the “signal (S)” and “noise (N)” ratio to measure the quality characteristic of the process or system which deviates from the desired value. The “signal” represents the desirable and “noise” represents the undesirable values for the output characteristics. This S/N ratio varies according to the type of characteristics and can be calculated as follow:
 if nominal is the best characteristic;

$$\frac{S}{N} = 10 \log_{S^2}$$

if smaller is the best characteristic;

$$\frac{S}{N} = -10 \log \frac{1}{n} \left(\sum y^2 \right)$$

and if larger is the best characteristic;

$$\frac{S}{N} = - \log \frac{1}{n} \left(\sum \frac{1}{y^2} \right)$$

where, ‘ Σ ’ is the average of observed data, ‘ S_y^2 ’ is the variation of ‘y’, ‘n’ is the number of observations and ‘y’ is the observed data.

Although Taguchi method provides better graphic visualization in determining the optimal conditions, the extent of influence each factor exerts in the output of any process needs further analysis through ANOVA. Nevertheless, this method requires less data to find optimum conditions as compared to RSM. Also, since Taguchi method minimizes the experimental runs, it is recommended to use this method when the number of variables under study is large and also when the experimental time run is lengthy and costly.

Thus, it can be concluded that application of various optimization tools is desirable in a process like dye removal which is effected by multiple factors and their interaction. Thus, optimizing the conditions to obtain the best possible combination of the process parameters and nutrients, makes the process viable and economic in terms of cost, time and waste production. For example, a process optimization study as described by Kaushik and Malik (2011), resulted in 85 % cost reduction, wherein the yeast extract from the unoptimized media was replaced by

low cost nitrogen supplements (urea and ammonium chloride). Further, this resulted in higher uptake capacity of the fungal biomass (*A. lentulus*), decreasing the production of excess biomass and reducing the production of dye laden waste sludge.

5 Reactor Designs Based on Different Mechanisms

Reactor scale studies are often necessary to evaluate the efficiency of the developed technology at industrial scale. Different reactor designs have been proposed by various researchers, depending upon the principle mechanism involved in the process of dye removal. The design of the bioreactor for dye removal process basically depends on two major factors, first being the type of organism and its growth properties i.e. whether it is a unicellular or multicellular microbe; whether it exhibits mycelial or pelleted growth etc. and second being the mechanism i.e. biosorption (the microbe need not be provided with nutrient support but contact between the biosorbent and dye should be maximized), bioaccumulation (nutrient support is required along with aeration) and biodegradation (nutrient support along with optimum pH and temperature for maximal enzyme activity needs special attention). Figure 5 provides a schematic representation of packed bed reactor (often suitable for dye biosorption) developed for the removal of Violet 14R dye by the dried and powdered biomass of *A. lentulus* (Singh 2010). The height of biomass bed can be varied depending upon the contact time required for accomplishing efficient dye removal. Second most common reactor design for dye biosorption is based on the phenomenon of immobilization where the biosorbent is immobilized on an inert carrier. Gupta (2010) utilized the blocks of ceramic monoliths for the immobilization of *A. lentulus* which were then utilized for the biosorption of Acid Navy Blue dye (Fig. 6).

For dye removal process requiring the use of living cells, Mishra and Malik (2013) have proposed the use of three most commonly used reactor designs; continuous stirred-tank reactor, expanded and packed bed reactors and airlift bioreactors (Fig. 7). All these three designs require a constant supply of nutrient and air so as to keep the cells in their live state. One such design has been demonstrated by Xin et al. (2012b) where they have utilized air lift column bioreactor to obtain the pelleted growth of the fungi for removing dye through bioaccumulation mechanism. The air lift bioreactors, promoting pelleted growth of the fungi, have an added advantage where problems related to biomass clogging are minimized resulting in higher mass transfer and dye removal. Moreover, pelleted biomass allows quick separation of dye laden biomass from the treated wastewater.

Reactor designs based on biodegradation process may utilize either the microbial biomass capable of producing the enzyme responsible for dye removal or the purified enzyme, such as LiP, laccase etc. The microbial cells may be immobilized in a suitable bioreactor design for the production of enzyme which then brings about the decolorization. For example, Dominguez et al. (2001) studied degradation of Poly R-478 dye by three enzymes i.e. MnP, LiP and laccase produced by