



AUTODESK.
Official Press

James Vandezande
Eddy Krygiel

Foreword by Brendan Dillon, BIM Manager
for Denver International Airport



Mastering Autodesk®
Revit® Architecture 2016



SYBEX
A Wiley Brand



Mastering Autodesk® Revit® Architecture 2016

James Vandezande
Eddy Krygiel

 **SYBEX**
A Wiley Brand

 **AUTODESK.**
Official Press

Acquisitions Editor: Stephanie McComb
Development Editor: Kelly Talbot
Technical Editors: Eric Bogenschutz, Jon McFarland
Production Editor: Rebecca Anderson
Copy Editor: Elizabeth Welch
Editorial Manager: Mary Beth Wakefield
Production Manager: Kathleen Wisor
Associate Publisher: Jim Minatel
Book Designers: Maureen Forys, Happenstance Type-O-Rama; Judy Fung
Proofreader: Jen Larsen, Word One New York
Indexer: Johnna VanHoose Dinse
Project Coordinator, Cover: Brent Savage
Cover Designer: Wiley
Cover Image: John Linden

Copyright © 2015 by John Wiley & Sons, Inc., Indianapolis, Indiana

Published simultaneously in Canada

ISBN: 978-1-119-04461-1

ISBN: 978-1-119-04458-1 (ebk.)

ISBN: 978-1-119-04465-9 (ebk.)

No part of this publication may be reproduced, stored in a retrieval system or transmitted in any form or by any means, electronic, mechanical, photocopying, recording, scanning or otherwise, except as permitted under Sections 107 or 108 of the 1976 United States Copyright Act, without either the prior written permission of the Publisher, or authorization through payment of the appropriate per-copy fee to the Copyright Clearance Center, 222 Rosewood Drive, Danvers, MA 01923, (978) 750-8400, fax (978) 646-8600. Requests to the Publisher for permission should be addressed to the Permissions Department, John Wiley & Sons, Inc., 111 River Street, Hoboken, NJ 07030, (201) 748-6011, fax (201) 748-6008, or online at <http://www.wiley.com/go/permissions>.

Limit of Liability/Disclaimer of Warranty: The publisher and the author make no representations or warranties with respect to the accuracy or completeness of the contents of this work and specifically disclaim all warranties, including without limitation warranties of fitness for a particular purpose. No warranty may be created or extended by sales or promotional materials. The advice and strategies contained herein may not be suitable for every situation. This work is sold with the understanding that the publisher is not engaged in rendering legal, accounting, or other professional services. If professional assistance is required, the services of a competent professional person should be sought. Neither the publisher nor the author shall be liable for damages arising herefrom. The fact that an organization or Web site is referred to in this work as a citation and/or a potential source of further information does not mean that the author or the publisher endorses the information the organization or Web site may provide or recommendations it may make. Further, readers

should be aware that Internet Web sites listed in this work may have changed or disappeared between when this work was written and when it is read.

For general information on our other products and services or to obtain technical support, please contact our Customer Care Department within the U.S. at (877) 762-2974, outside the U.S. at (317) 572-3993 or fax (317) 572-4002.

Wiley publishes in a variety of print and electronic formats and by print-on-demand. Some material included with standard print versions of this book may not be included in e-books or in print-on-demand. If this book refers to media such as a CD or DVD that is not included in the version you purchased, you may download this material at <http://booksupport.wiley.com>. For more information about Wiley products, visit www.wiley.com.

Library of Congress Control Number: 2015939456

TRADEMARKS: Wiley, the Wiley logo, and the Sybex logo are trademarks or registered trademarks of John Wiley & Sons, Inc. and/or its affiliates, in the United States and other countries, and may not be used without written permission. Autodesk and Revit are registered trademarks of Autodesk, Inc. All other trademarks are the property of their respective owners. John Wiley & Sons, Inc. is not associated with any product or vendor mentioned in this book.

Acknowledgments

Ah, acknowledgments. Although all the glory of writing a book is consumed by the authors, it takes so many more people than just us to actually make this happen. Just like building design, the process of writing and publishing a book is truly a team sport—and without the hard work, dedication, and willingness to put up with the authoring team, this book would have never have happened.

Of all the people to thank, first of all, we'd like to thank the staff at the Revit Factory. Without their fine work, this would be a very empty book. Thank you, guys and gals, for your hard work, innovative ideas, and desire to stay in touch with current design and construction issues.

Second, a thank-you goes to Brendan Dillon of the Denver International Airport for his wonderful foreword and, more important, the spectacular work he's done. In his time there he's spearheaded the creation of a very comprehensive BIM guideline to help his agency figure out what they want from BIM during design and construction and into operations; see <http://business.flydenver.com>.

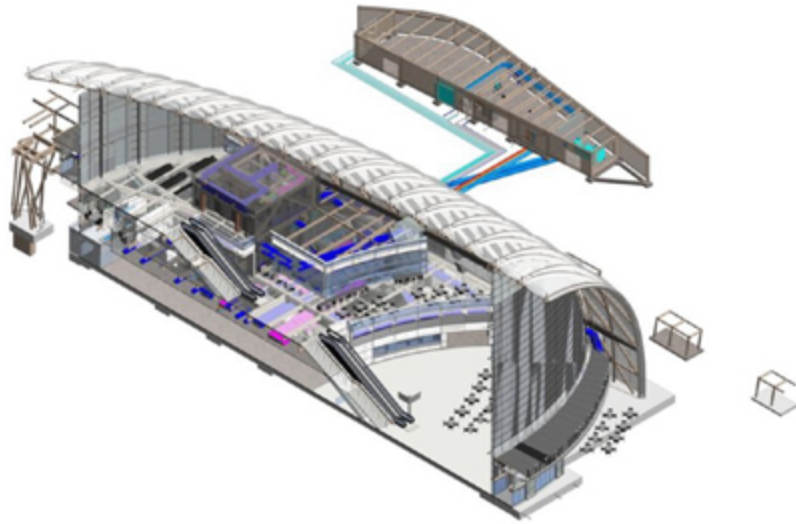
Finally, a big thanks to our technical team. They dot our i's, cross our t's, and chide us every time we turn in something late. Their work and effort ensure that we as authors can produce something that you the reader can actually follow. So a thank-you to our developmental editor, Kelly Talbot, for putting up with our school-yard antics; to copy editor Liz Welch for taking our architectural slang and making it readable; and to production editor Becca Anderson for putting all the pieces together and getting it ready for print. Thanks also to Mary Beth Wakefield for watching the schedule and allowing us to use you as an excuse not to

visit family on weekends or holidays during “Book Season.” A thank-you to Jon McFarland and Eric Bogenschutz, technical editors, who have given a careful and detailed eye to all of our Revit workflows, and to our excellent support team at Sybex, who helped us develop all this foxy content. And a final thank-you to Willem Knibbe for getting us into this in the first place.

The building photograph on the cover was provided by photographer John Linden and features the Anaheim Regional Transportation Intermodal Center (ARTIC) designed by HOK. ARTIC is a new world class transportation gateway to Orange County, California, the 5th most densely populated county in the United States. The project links freeways, major arterial roadways, bus, taxi and rail systems, as well as bike and pedestrian pathways in one central location.

ARTIC anchors the Anaheim Rapid Connection (ARC), a high-capacity, fixed-guideway transit system and will be the southern terminus of the California High Speed Rail which will link the State's southern and northern urban centers. The use of BIM on ARTIC helped engage the many engineers, builders, and public agencies involved in the project. For more information on this project, please visit the following web page:

<http://www.hok.com/design/type/aviation-transportation/anaheim-regional-transit-center-artic/>



About the Author



James Vandezande is a registered architect and a principal at HOK in New York City, where he is a member of the firm-wide BIM leadership and is managing its buildingSMART initiatives. A graduate of the New York Institute of Technology, he worked in residential and small commercial architecture firms performing services ranging from estimating and computer modeling to construction administration. James transformed from an architect to a digital design manager in his 10-year span at SOM. In this capacity, he pioneered the implementation of BIM on such projects as One World Trade Center, aka Freedom Tower. James has been using Revit since version 3.1 and has lectured at many industry events, including Autodesk University, VisMasters Conference, CMAA BIM Conference, McGraw-Hill Construction, and the AIANYS Convention. He is a cofounder of the NYC Revit Users Group, and has been an adjunct lecturing professor at the NYU School for Continuing and Professional Studies as well as the Polytechnic Institute of NYU. James has served as the chair of the Design work group for the National BIM Standard-US and has been a long time contributor to the Level of Development (LOD) Specification.



Eddy Krygiel is a senior Business Consultant with the AEC team with Autodesk Consulting. Eddy focuses on BIM and technology workflows for architecture, engineering, and construction (AEC) clients. He received his bachelor's degree in architecture from the University of Kansas School of Architecture and Urban Design. He has almost 20 years of experience in architectural offices and on a range of projects from single-family residential to office, federal, civic, and aviation clients. Eddy has helped firms around the country at both the firm level and the project level.

His most recent project was the Denver International Airport, where he had the role of BIM Manager for the Program Management team. The BIM role involved supporting and steering stakeholder workflows from design through construction while not impacting the overall project fee or schedule. The final deliverable to the airport was a facility management-ready BIM model for both vertical and horizontal assets. Eddy has also led or been involved in other large-scale projects that have taken BIM beyond documentation.

Eddy is the author of more than 15 books on BIM and sustainability including the Mastering Revit series and Green BIM. He also teaches BIM, construction documents, and architectural communication at the University of Kansas School of Architecture.

Contents

[Foreword](#)

[Introduction](#)

[Who Should Read This Book](#)

[What You Will Learn](#)

[The Mastering Series](#)

[What's New?](#)

[What to Expect](#)

[Part 1 Fundamentals](#)

[Chapter 1 Introduction: The Basics of BIM](#)

[What Is Revit?](#)

[Understanding a BIM Workflow](#)

[Leveraging BIM Processes](#)

[Focusing Your Investment in BIM](#)

[The Bottom Line](#)

[Chapter 2 Applying the Principles of the User Interface and Project Organization](#)

[Understanding the User Interface](#)

[Defining Project Organization](#)

[The Bottom Line](#)

[Chapter 3 The Basics of the Toolbox](#)

[Selecting, Modifying, and Replacing Elements](#)

[Editing Elements Interactively](#)

[Exploring Other Editing Tools](#)

[Modeling Site Context](#)

[The Bottom Line](#)

[Chapter 4 Configuring Templates and Standards](#)

[Introducing Project Templates](#)

[Customizing Project Settings for Graphic Quality](#)

[Increasing Efficient View Management](#)

[Creating Custom Annotations](#)

[Starting a Project with a Custom Template](#)

[Strategies for Managing Templates](#)

[The Bottom Line](#)

[Part 2 Collaboration and Teamwork](#)

[Chapter 5 Working in a Team](#)

[Understanding Worksharing Basics](#)

[Enabling Worksharing on Your Project](#)

[Organizing Worksets](#)

[Managing Workflow with Worksets](#)

[Understanding Element Ownership in Worksets](#)

[Collaborating in the Cloud](#)

[The Bottom Line](#)

[Chapter 6 Working with Consultants](#)

[Preparing for Collaboration](#)

[Managing the Coordination Process](#)

[Using Linked Models in Revit](#)

[Using the Coordination Tools](#)

[The Bottom Line](#)

[Chapter 7 Interoperability: Working Multiplatform](#)

[Examining Interoperability on a BIM Curve](#)

[Inserting CAD Data](#)

[Using Inserted 2D Data](#)

[Using Inserted 3D Data](#)

[Exporting CAD Data](#)

[Exporting 2D CAD Data](#)

[Exporting 3D Model Data](#)

[The Bottom Line](#)

[Part 3 Modeling and Massing for Design](#)

[Chapter 8 Advanced Modeling and Massing](#)

[The Massing User Interface and Functionality](#)

[Using Free-form Building Massing](#)

[Creating Formula-driven Massing](#)

[The Bottom Line](#)

[Chapter 9 Conceptual Design and Design Analysis](#)

[Analysis for Sustainability](#)

[Creating a Conceptual Mass](#)

[Energy Modeling](#)

[The Bottom Line](#)

[Chapter 10 Working with Phasing, Groups, and Design Options](#)

[Using Phasing](#)

[Creating and Using Groups](#)

[Making Design Options for Design Iteration](#)

[Combining Phasing, Groups, and Design Options](#)

[The Bottom Line](#)

[Chapter 11 Visualization](#)

[Explaining the Role of Visualization](#)

[Understanding View Controls](#)

[Understanding Analytic Visualization](#)

[Understanding Photorealistic Visualization](#)

[The Bottom Line](#)

[Part 4 Extended Modeling Techniques](#)

[Chapter 12 Creating Walls and Curtain Walls](#)

[Using Extended Modeling Techniques for Basic Walls](#)

[Creating Stacked Walls](#)

[Creating Simple Curtain Walls](#)

[Creating Complex Curtain Walls](#)

[The Bottom Line](#)

[Chapter 13 Modeling Floors, Ceilings, and Roofs](#)

[Understanding Floor Types](#)

[Sketching for Floors, Ceilings, and Roofs](#)

[Modeling Slab Edges](#)

[Modeling Floor Finishes](#)

[Creating Ceilings](#)

[Understanding Roof Modeling Methods](#)

[Using Advanced Shape Editing with Floors and Roofs](#)

[The Bottom Line](#)

[Chapter 14 Designing with the Family Editor](#)

[Getting Started with a Family](#)

[Developing the Framework for a Family Component](#)

[Modeling Techniques in the Family Editor](#)

[Troubleshooting Techniques](#)

[The Bottom Line](#)

[Chapter 15 Creating Stairs and Railings](#)

[Designing Stairs and Railings](#)

[Reviewing the Key Components of Stairs and Railings](#)

[Creating Stairs](#)

[Annotating Stairs](#)

[Creating Railings](#)

[Using the Railing Tool for Other Objects](#)

[The Bottom Line](#)

[Part 5 Documentation](#)

[Chapter 16 Detailing Your Design](#)

[Creating Details](#)

[Detailing Tools](#)

[Adding Detail Components to Families](#)

[Reusing Details from Other Files](#)

[The Bottom Line](#)

[Chapter 17 Documenting Your Design](#)

[Documenting Plans](#)

[Creating Schedules and Legends](#)

[Laying Out Sheets](#)

[The Bottom Line](#)

[Chapter 18 Annotating Your Design](#)

[Annotating with Text and Keynotes](#)

[Annotating with Tags](#)

[Adding Dimensions](#)

[Annotating with Project and Shared Parameters](#)

[The Bottom Line](#)

[Part 6 Construction and Beyond](#)

[Chapter 19 Working in the Construction Phase](#)

[Using Revisions in Your Project](#)

[Using Digital Markups](#)

[Modeling for Construction](#)

[The Bottom Line](#)

[Chapter 20 Presenting Your Design](#)

[Understanding Color Fill Legends](#)

[Presenting with 3D Views](#)

[Editing Viewport Types](#)

[Creating “Exploded” Axonometric Views](#)

[The Bottom Line](#)

[Chapter 21 Working with Point Clouds](#)

[Understanding LiDAR](#)

[Planning for a LiDAR Survey](#)

[Using the Scan in a Project](#)

[The Bottom Line](#)

[Appendices](#)

[Appendix A The Bottom Line](#)

[Chapter 1: Introduction: The Basics of BIM](#)

[Chapter 2: Applying the Principles of the User Interface and Project Organization](#)

[Chapter 3: The Basics of the Toolbox](#)

[Chapter 4: Configuring Templates and Standards](#)

[Chapter 5: Working in a Team](#)

[Chapter 6: Working with Consultants](#)

[Chapter 7: Interoperability: Working Multiplatform](#)

[Chapter 8: Modeling and Massing for Design](#)

[Chapter 9: Conceptual Design and Design Analysis](#)

[Chapter 10: Working with Phasing, Groups, and Design Options](#)

[Chapter 11: Visualization](#)

[Chapter 12: Creating Walls and Curtain Walls](#)

[Chapter 13: Modeling Floors, Ceilings, and Roofs](#)

[Chapter 14: Designing with the Family Editor](#)

[Chapter 15: Creating Stairs and Railings](#)

[Chapter 16: Detailing Your Design](#)

[Chapter 17: Documenting Your Design](#)

[Chapter 18: Annotating Your Design](#)

[Chapter 19: Working in the Construction Phase](#)

[Chapter 20: Presenting Your Design](#)

[Chapter 21: Working with Point Clouds](#)

[Appendix B Tips, Tricks, and Troubleshooting](#)

[Optimizing Performance](#)

[Use Best Practices](#)

[Quality Control](#)

[Other Tips and Shortcuts](#)

[Additional Resources](#)

[Appendix C Autodesk Revit Architecture Certification](#)

[Index](#)

[EULA](#)

List of Tables

[Chapter 14](#)

[**Table 14.1**](#)

[**Table 14.2**](#)

[Appendix C](#)

[**Table C.1**](#)

[**Table C.2**](#)

List of Illustrations

[Chapter 1](#)

Figure 1.1 A CAD-based workflow

Figure 1.2 A BIM-based workflow

Figure 1.3 Service opportunities that BIM supports

Figure 1.4 An example of rapid prototyping using BIM data

Figure 1.5 Even 2D views can evolve to illustrate and analyze spatial properties.

Figure 1.6 Construction documentation can begin to transform from 2D to 3D.

Figure 1.7 Two different methods of using 3D presentation views

Figure 1.8 A still from an animation showing accurate physical conditions for the project

Figure 1.9 BIM environmental analysis time comparison

Figure 1.10 Daylighting overlay from Autodesk® 3ds Max® Design software

Figure 1.11 The effort curves in the design and construction industry.

Figure 1.12 BIM provides the most leverage when it is implemented early in the design.

Chapter 2

Figure 2.1 The Revit Architecture 2016 UI

Figure 2.2 Customizing the QAT

Figure 2.3 The InfoCenter

Figure 2.4 The ribbon

Figure 2.5 Setting the UI options

Figure 2.6 Example of a contextual tab

[**Figure 2.7** Panels can be relocated anywhere in the UI.](#)

[**Figure 2.8** Special panel features](#)

[**Figure 2.9** Options appear in a bar below the ribbon.](#)

[**Figure 2.10** Properties palette](#)

[**Figure 2.11** Project Browser](#)

[**Figure 2.12** Browser Organization Properties dialog box](#)

[**Figure 2.13** Properties palette and Project Browser combined in a tabbed or stacked palette](#)

[**Figure 2.14** Working sheet view](#)

[**Figure 2.15** View control bar examples](#)

[**Figure 2.16** Temporary View Properties command](#)

[**Figure 2.17** Active view with Temporary View Properties applied](#)

[**Figure 2.18** Graphic Display Options dialog box](#)

[**Figure 2.19** Sketch mode with active work plane](#)

[**Figure 2.20** ViewCube context menu](#)

[**Figure 2.21** The SpaceNavigator 3D mouse from 3Dconnexion](#)

[**Figure 2.22** Revit organizational chart](#)

[**Figure 2.23** Datum objects](#)

[**Figure 2.24** Create multiple copies of levels.](#)

[**Figure 2.25** Adding views to levels](#)

[**Figure 2.26** Controlling the 3D \(analytic\) extents of the datum](#)

[Figure 2.27](#) [3D \(analytic\) extents affect visibility of datum objects.](#)

[Figure 2.28](#) [Customizing 3D and 2D extents of datum objects](#)

[Figure 2.29](#) [Adjusting the graphic extents of a level](#)

[Figure 2.30](#) [Adding an elbow to a level](#)

[Figure 2.31](#) [Adjusting the 2D extents of grids](#)

[Figure 2.32](#) [Propagating extents to other views](#)

[Figure 2.33](#) [Extent commands in the context menu](#)

[Figure 2.34](#) [Concentric walls](#)

[Figure 2.35](#) [Reference planes and levels shown in elevation](#)

[Figure 2.36](#) [Finished walls](#)

[Figure 2.37](#) [Section view](#)

[Figure 2.38](#) [Selecting a family template](#)

[Figure 2.39](#) [Instance parameters of a wall](#)

[Figure 2.40](#) [Type parameters of a wall](#)

[Figure 2.41](#) [Visibility and graphic overrides for an elevation](#)

[Figure 2.42](#) [Creating new views from the ribbon](#)

[Figure 2.43](#) [Duplicating views from the Project Browser](#)

[Figure 2.44](#) [View Range dialog box](#)

[Figure 2.45](#) [View range properties explained](#)

[Figure 2.46](#) [Elevation tag orientation](#)

[Figure 2.47](#) [Creating additional elevations](#)

[Figure 2.48](#) [Elevation extents](#)

Figure 2.49 Section properties and extents

Figure 2.50 Building and Detail sections shown in plan view

Figure 2.51 Be aware of the different types of callouts you can create from the Type Selector.

Figure 2.52 Detail callouts can be set to show in intersecting views.

Figure 2.53 Use the search bar with the Reference Other View option.

Figure 2.54 Legend components

Figure 2.55 An example of a keynote legend placed on a sheet

Figure 2.56 Creating 3D view types and toggling between them

Figure 2.57 Setting camera and target origins

Figure 2.58 Modifying the view size and field of view

Figure 2.59 The Far Clip Offset is too shallow.

Figure 2.60 Section box applied to a 3D view

Chapter 3

Figure 3.1 The right end of the Modify tab changes based on the element that is selected: (a) the Modify_|_Roofs tab; (b) the Modify_|_Walls tab; (c) the Modify_|_Floors tab.

Figure 3.2 Use selection options to avoid picking elements, such as links or pinned elements. These options are found in the Select expanded panel (a) and the status bar (b).

Figure 3.3 Use the Filter dialog box to fine-tune your selections.

Figure 3.4 The Properties palette contains the Type Selector (a) and is used to set view properties when no objects are selected.

Figure 3.5 Use the Properties palette to filter selection sets.

Figure 3.6 Run recent commands from the context menu.

Figure 3.7 Drag or click the blue grip to change the reference of the temporary dimension.

Figure 3.8 The Temporary Dimension Properties dialog box lets you define default behaviors based on your modeling needs.

Figure 3.9 Once an object is selected, it can be set to move with nearby elements: (a) Select the furniture, and then select the Move with Nearby Elements tool; (b) note that the elements keep their relationships.

Figure 3.10 The flip arrow is another way to reorient an element. For walls, it is always found on the exterior side.

Figure 3.11 The sink, toilet, and bath fixtures are mirrored around the centerline of the chase wall: (a) selecting the axis; (b) the mirrored elements.

Figure 3.12 The Move To 2nd option is used in the Array tool to set a fixed distance between instances: (a) setting the array distance; (b) changing the number of elements in the array.

Figure 3.13 This array uses the Move To Last option and fills instances between the first and last instances: (a) creating an array first to last; (b) adding more elements to this array to keep the end element in the same location but add more in between.

Figure 3.14 Elements will auto-rotate in a radial array.

Figure 3.15 You can use the Align tool for lining up edges of windows in a facade.

Figure 3.16 Extend walls to references by picking the target (a) and then the wall to extend (b).

Figure 3.17 Using the Split Element tool with the Delete Inner Segment option checked

Figure 3.18 Use Offset with Tab-select to copy a chain of elements.

Figure 3.19 A door constrained to a wall can't be moved independently of the wall.

Figure 3.20 Deleting a constrained dimension generates an alert.

Figure 3.21 Using Reveal Constraints view mode

Figure 3.22 Intersections at Level 2 have been joined: (a) unjoined; (b) joined.

Figure 3.23 Additional actions are available when pasting elements.

Figure 3.24 Edit Pasted mode allows additional modification of pasted elements.

Figure 3.25 Paste Aligned options

Figure 3.26 Customize keyboard shortcuts for commonly used Revit commands.

Figure 3.27 A toposurface can host components, such as trees, people, vehicles, and other entourage.

Figure 3.28 A toposurface will appear as a solid in a 3D view only if a section box is used.

Figure 3.29 A simple toposurface created by placing points

Figure 3.30 Linked CAD file as seen in a 3D view

Figure 3.31 Select only the layers containing 3D contour information.

Figure 3.32 The sketch boundary for a subregion must be a closed loop but can overlap the edge of the toposurface.

Figure 3.33 The subregion is assigned a different material for visualization purposes.

Figure 3.34 Sketch lines that overlap the edge of the topographic surface.

Figure 3.35 A split region after editing the elevation of a corner point

Figure 3.36 Compare the difference between an edited split region (a) and an edited point directly on the surface (b).

Figure 3.37 This section view illustrates how the building pad adjusts the extents of the topographic surface.

Figure 3.38 A property line can be defined in a table of distances and bearings.

Figure 3.39 Tags are applied to display the distance and bearing of each segment of the property line.

Figure 3.40 Use Tab-select to place a property area tag for all segments.

Chapter 4

Figure 4.1 Starting a new project template from scratch

Figure 4.2 The Object Styles dialog box gives you graphic control of all Revit categories and their subcategories.

Figure 4.3 Customizing the cut display of geometry in a family

Figure 4.4 Model line weights vary depending on the view scale.

Figure 4.5 This dialog box displays all line patterns in the project.

Figure 4.6 Line patterns consist of dashes, spaces, and dots.

Figure 4.7 Line styles consist of weight, color, and pattern.

Figure 4.8 Materials define the surface and cut patterns, color, and render material of the elements.

Figure 4.9 Manage material properties using the Material Browser.

Figure 4.10 Use identity data to classify, find, tag, and schedule materials.

Figure 4.11 Use the Asset Browser to access material assets in the document or a material library.

Figure 4.12 The Asset Browser can also be used to replace an asset assigned to a material.

Figure 4.13 Accessing different sorting options in the Material Browser

Figure 4.14 Fill patterns are defined separately for drafting and model representations.

Figure 4.15 The CMU wall has both a drafting pattern (cut) and a model pattern (surface) defined.

Figure 4.16 From left to right: a simple fill pattern, a simple fill pattern with the Crosshatch option selected, and a custom fill pattern

Figure 4.17 From left to right: Orient To View, Keep Readable, and Align With Element

Figure 4.18 The New Pattern dialog box displays the imported PAT file in the Custom group.

Figure 4.19 Create a new filled region type with your new custom fill pattern.

Figure 4.20 Edit color schemes to add predefined values, colors, and fill patterns.

Figure 4.21 Select from predefined values in the Properties palette of a room.

Figure 4.22 Color-filled plans can use predefined values in templates.

Figure 4.23 Accessing browser organization settings in the ribbon

Figure 4.24 Use view properties and parameters to create folders for the Project Browser.

Figure 4.25 Create custom project parameters for additional view organization options.

Figure 4.26 Customized Browser Organizations can make larger projects easier to navigate.

Figure 4.27 Filter rules applied to walls for fire ratings

Figure 4.28 View Templates dialog box

Figure 4.29 Specify a view template for new views within a view type.

Figure 4.30 The Loaded Tags dialog box shows loaded annotation families assigned to selected

categories.

Figure 4.31 Floor plan showing the room tag

Figure 4.32 Creating a custom door tag

Figure 4.33 Adding more than one parameter to a single label

Figure 4.34 The custom tags applied to doors comprise actual door sizes.

Figure 4.35 Creating a SIM type section tag

Figure 4.36 The default tags

Figure 4.37 Customizing the section tag

Figure 4.38 Place labels for Detail Number and Sheet Number.

Figure 4.39 Draw the outline of the filled region to form the section arrow.

Figure 4.40 The completed custom section tag

Figure 4.41 Customizing the callout tag.

Figure 4.42 Define the custom linework and sheet number for the elevation mark body.

Figure 4.43 Custom elevation pointer composed of lines, filled region, and labels

Figure 4.44 The nested pointer family is placed four times in the head family.

Figure 4.45 A customized elevation tag for interior elevations

Figure 4.46 Add your custom project templates to File Locations in the Options dialog box.

Figure 4.47 Additive template approach

Figure 4.48 Subtractive template approach

Figure 4.49 Select categories to be transferred between projects.

Figure 4.50 Transferring project standards with duplicate types

Figure 4.51 Insert Views can be used to transfer an entire sheet of drafting views into your project.

Figure 4.52 Insert 2D Elements dialog box

Chapter 5

Figure 5.1 The worksharing concept

Figure 5.2 The Collaborate tab

Figure 5.3 Activating worksharing.

Figure 5.4 The Worksets dialog box

Figure 5.5 The Save command will create a central file with only the default settings.

Figure 5.6 Options for saving a project file

Figure 5.7 Synchronizing with central to relinquish permissions

Figure 5.8 Selecting the starting view

Figure 5.9 Create a new local file from the Open dialog box.

Figure 5.10 Overwriting existing local files

Figure 5.11 Workset options when opening a file

Figure 5.12 Closing a file while retaining ownership of worksets

Figure 5.13 Changing the default username

Figure 5.14 Creating new worksets in the project

Figure 5.15 Isolating Workset1 in Visibility/Graphic Overrides

Figure 5.16 Use the Filter tool to select specific object categories.

Figure 5.17 Assign the Workset property to multiple elements.

Figure 5.18 Select only Model Groups in the Filter dialog box.

Figure 5.19 Setting the active workset in the ribbon

Figure 5.20 Setting the active workset in the status bar

Figure 5.21 Workset assignment displayed in status bar, Properties, palette, and pop-up information.

Figure 5.22 Synchronize With Central command on the ribbon

Figure 5.23 Synchronize With Central dialog box

Figure 5.24 Changes Not Synchronized With Central dialog box

Figure 5.25 Checkout Status tab

Figure 5.26 Owners tab

Figure 5.27 Model Updates tab

Figure 5.28 Worksets tab

Figure 5.29 Modifying the settings for Worksharing Update Frequency.

Figure 5.30 Workset settings in view templates

Figure 5.31 Saving options when closing a local file

Figure 5.32 The Close Project Without Saving dialog box

Figure 5.33 Disabling worksharing

Figure 5.34 The worksharing icon on a selected element

Figure 5.35 Making an element editable using the context menu

Figure 5.36 Placing a request for permission

Figure 5.37 Editing Request Placed dialog box

Figure 5.38 Editing request notification

Figure 5.39 The Editing Requests dialog box

Figure 5.40 (a) Notification of a granted editing request. (b) Alternate notification of a granted request alerting you to Reload Latest

Figure 5.41 Relinquish All Mine

Figure 5.42 The Worksharing Monitor is available for Autodesk Subscription customers.

Figure 5.43 Viewing models online with A360 Drive

Figure 5.44 Using the A360 online viewing engine

Chapter 6

Figure 6.1 The relationships of interdisciplinary coordination

Figure 6.2 Suggestions for collaboration tools to be used between disciplines

Figure 6.3 Linked files must use the same platform version, and all worksharing team members should use the same build.

Figure 6.4 Diagram of the relationship between project internal origins and shared coordinates in linked models

Figure 6.5 Creating multiple locations for a single linked model

Figure 6.6 The Project Base Point and Survey Point settings are found under Site in Visibility/Graphic Overrides.

Figure 6.7 The survey_point can be considered similar to a real-world geodetic survey marker.

Figure 6.8 Using tiled windows helps you examine the effect of project and shared coordinates.

Figure 6.9 Determining the reference type of linked Revit models

Figure 6.10 Notification of nested models using the Overlay setting

Figure 6.11 Use the Specify option to close worksets when linking.

Figure 6.12 Access worksets of linked files from Manage Links.

Figure 6.13 Schematic representation of a complex project assembled with multiple linked models

Figure 6.14 Enable all custom display settings for a linked RVT file.

Figure 6.15 Enable custom display settings for model categories of a linked RVT file.

Figure 6.16 Element tabs available for Copy/Monitor in Revit Architecture

Figure 6.17 The Copy/Monitor Options dialog box allows customization for intelligent collaboration.

Figure 6.18 The Coordination Review dialog box lists inconsistencies in monitored elements.

Figure 6.19 3D coordination model in Navisworks Manage