

Plant
Breeding
Reviews



VOLUME 38

WILEY Blackwell

PLANT BREEDING REVIEWS

Volume 38

Plant Breeding Reviews is sponsored by:

American Society for Horticultural Science

International Society for Horticultural Science

Society of American Foresters

National Council of Commercial Plant Breeders

Editorial Board, Volume 38

I. L. Goldman

C. H. Michler

Rodomiro Ortiz

PLANT BREEDING REVIEWS

Volume 38

Edited by
Jules Janick
Purdue University

WILEY Blackwell

Cover design: John Wiley & Sons, Inc.

Cover illustration: Courtesy of the Series Editor

Copyright © 2014 by Wiley-Blackwell. All rights reserved

Published by John Wiley & Sons, Inc., Hoboken, New Jersey

Published simultaneously in Canada

No part of this publication may be reproduced, stored in a retrieval system, or transmitted in any form or by any means, electronic, mechanical, photocopying, recording, scanning, or otherwise, except as permitted under Section 107 or 108 of the 1976 United States Copyright Act, without either the prior written permission of the Publisher, or authorization through payment of the appropriate per-copy fee to the Copyright Clearance Center, Inc., 222 Rosewood Drive, Danvers, MA 01923, (978) 750-8400, fax (978) 750-4470, or on the web at www.copyright.com. Requests to the Publisher for permission should be addressed to the Permissions Department, John Wiley & Sons, Inc., 111 River Street, Hoboken, NJ 07030, (201) 748-6011, fax (201) 748-6008, or online at <http://www.wiley.com/go/permission>.

Limit of Liability/Disclaimer of Warranty: While the publisher and author have used their best efforts in preparing this book, they make no representations or warranties with respect to the accuracy or completeness of the contents of this book and specifically disclaim any implied warranties of merchantability or fitness for a particular purpose. No warranty may be created or extended by sales representatives or written sales materials. The advice and strategies contained herein may not be suitable for your situation. You should consult with a professional where appropriate. Neither the publisher nor author shall be liable for any loss of profit or any other commercial damages, including but not limited to special, incidental, consequential, or other damages.

For general information on our other products and services or for technical support, please contact our Customer Care Department within the United States at (800) 762-2974, outside the United States at (317) 572-3993 or fax (317) 572-4002.

Wiley also publishes its books in a variety of electronic formats. Some content that appears in print may not be available in electronic formats. For more information about Wiley products, visit our web site at www.wiley.com.

Library of Congress Cataloging-in-Publication Data:

ISBN 978-1-118-91683-4

ISSN 0730-2207

Printed in the United States of America

10 9 8 7 6 5 4 3 2 1

Contents

Contributors	ix
1. Daniel Zohary: Geneticist and Explorer of Plant Domestication	1
<i>Giora Simchen</i>	
I. Early Days	2
II. Genetic Relationships among Related Plant Species	3
III. Domestication of Crops and Fruit Trees	4
IV. The Scientific Approach and Methodology of Daniel Zohary	6
V. The Book	7
VI. Awards, Honors, and Recognition	8
VII. Personality	9
Literature Cited and Selected Publications of Daniel Zohary	10
2. The Use of Association Genetics Approaches in Plant Breeding	17
<i>María F. Álvarez, Teresa Mosquera, and Matthew W. Blair</i>	
I. Introduction	19
II. Advantages of Association Mapping Approaches	20
III. Methods of Association Genetics	26
IV. Examples of Association Mapping	34
V. Software for Data Analysis	46
VI. Association Mapping Compared with Linkage Mapping	48
VII. Genome-Wide Selection and Genomic Selection	52
VIII. Outlook	54
Acknowledgments	57
Literature Cited	57

3. Epigenetics Connects the Genome to Its Environment	69
<i>Ray A. Bressan, Jian-Kang Zhu, Michael J. Van Oosten, Albino Maggio, Hans J. Bohnert, and Viswanathan Chinnusamy</i>	
I. Introduction	71
II. Historical Perspective and Conceptual Framework	72
III. Epigenetics	80
IV. Epigenetic Memory	90
V. Sex, Epigenetics, and the Genome	93
VI. Adaptation is a Form of Development	102
VII. Evolution: The Engine of Ideas	108
Acknowledgments	121
Literature Cited	121
4. Peanut Improvement for Human Health	143
<i>Sangam Dwivedi, Naveen Puppala, Soheila Maleki, Peggy Ozias-Akins, and Rodomiro Ortiz</i>	
I. Introduction	146
II. Genetic Variability for Nutritional Traits	149
III. Peanut Allergens	153
IV. Predicting Seed Quality and Allergens	156
V. Genetic and Molecular Bases of High Oleate Trait	159
VI. Sequencing the Peanut Genome and Implications in Breeding	159
VII. Transgene(s) to Produce Nutrient-Dense and Toxin- and Allergen-Free Peanuts	161
VIII. Breeding Opportunities	165
IX. Outlook	169
Acknowledgments	171
Literature Cited	171
5. Rice Breeding in Latin America	187
<i>César P. Martínez, Edgar A. Torres, Marc Chatel, Gloria Mosquera, Jorge Duitama, Manabu Ishitani, Michael Selvaraj, Beata Dedicova, Joe Tohme, Cécile Grenier, Mathias Lorieux, Maribel Cruz, Luis Berrío, Edgar Corredor, Gonzalo Zorrilla de San Martin, Flavio Breseghello, Orlando Peixoto, Jose Manoel Colombari Filho, Adriano Pereira de Castro, Sergio Iraçu Gindri Lopes, Mara Barbosa, Gustavo Rodrigo Daltrozzo Funck, Pedro Blanco, Fernando Pérez de Vida,</i>	

*Federico Molina, Juan Rosas, Sebastián Martínez,
Victoria Bonnacarrere, Silvia Garaycochea, Gonzalo
Carracelas, Alfredo Marin, Fernando Correa-Victoria,
Ismael Camargo, and Carlos Bernardo Bruzzone*

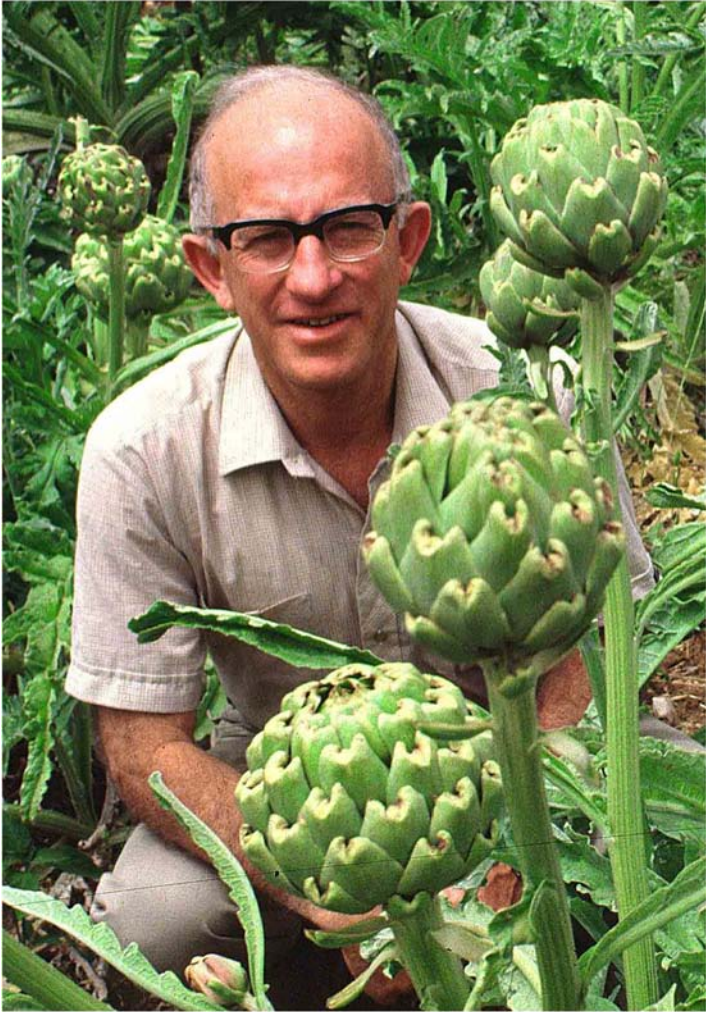
I. Introductory Remarks	192
II. The CIAT Rice Program	194
III. Advances in Population Improvement in Latin America and the Caribbean	202
IV. Genetics and Genomics Approaches to Improve Rice Breeding	206
V. Breeding for Resistance to Rice Pathogens	216
VI. Breeding for Adaptation to Abiotic Stresses	223
VII. Hybrid Rice Breeding	230
VIII. Rice Breeding Programs	234
IX. Perspectives and Future Directions	265
Literature Cited	266
Subject Index	279
Cumulative Subject Index	281
Cumulative Contributor Index	307

Contributors

- María F. Álvarez**, National University of Colombia – Bogotá, Bogotá, DC Colombia.
- Mara Barbosa**, Rio Grande do Sul State Rice Institute (IRGA), Cachoeirinha, Rio Grande do Sul, Brazil.
- Luis Berrío**, Latin American Fund for Irrigated Rice (FLAR), Cali, Colombia.
- Matthew W. Blair**, Department of Agricultural and Environmental Sciences, Tennessee State University, Nashville, TN, USA.
- Pedro Blanco**, National Agricultural Research Institute (INIA), Montevideo, Uruguay.
- Hans J. Bohnert**, Department of Plant Biology, University of Illinois at Urbana-Champaign, Urbana, IL 61801, USA.
- Victoria Bonnacarrere**, National Agricultural Research Institute (INIA), Montevideo, Uruguay.
- Flavio Breseghello**, Brazilian Enterprise for Agricultural Research (Embrapa Rice and Beans), Santo Antonio de Goiás, Brazil.
- Ray A. Bressan**, Department of Horticulture and Landscape Architecture, Purdue University, West Lafayette, IN, USA.
- Carlos Bernardo Bruzzone**, Seeds El Potrero Farm, Jaén, Perú.
- Ismael Camargo**, Panamanian Institute for Agricultural Research (IDIAP), Panama City, Panama.
- Gonzalo Carracelas**, National Agricultural Research Institute (INIA), Montevideo, Uruguay.
- Adriano Pereira de Castro**, Brazilian Enterprise for Agricultural Research (Embrapa Rice and Beans), Santo Antonio de Goiás, Brazil.
- Marc Chatel**, International Center for Tropical Agriculture (CIAT), Cali, Colombia.
- Viswanathan Chinnusamy**, Division of Plant Physiology, Indian Agricultural Research Institute, New Delhi, India.
- Jose Manoel Colombari Filho**, Brazilian Enterprise for Agricultural Research (Embrapa Rice and Beans), Santo Antonio de Goiás, Brazil.
- Fernando Correa-Victoria**, Rice Tec Solutions, Alvin, TX, USA.
- Edgar Corredor**, Latin American Fund for Irrigated Rice (FLAR), Cali, Colombia.

- Maribel Cruz**, Latin American Fund for Irrigated Rice (FLAR), Cali, Colombia.
- Gonzalo Zorrilla de San Martin**, Latin American Fund for Irrigated Rice (FLAR), Cali, Colombia.
- Beata Dedicova**, International Center for Tropical Agriculture (CIAT), Cali, Colombia.
- Jorge Duitama**, International Center for Tropical Agriculture (CIAT), Cali, Colombia.
- Sangam Dwivedi**, Agricultural Science Center at Clovis, New Mexico State University, Clovis, NM, USA.
- Gustavo Rodrigo Daltrozzo Funck**, Rio Grande do Sul State Rice Institute (IRGA), Cachoeirinha, Rio Grande do Sul, Brazil.
- Silvia Garaycochea**, National Agricultural Research Institute (INIA), Montevideo, Uruguay.
- Cécile Grenier**, AGAP Research Unit, Centre de Coopération Internationale en Recherche Agronomique pour le Développement (CIRAD), Montpellier, France; International Center for Tropical Agriculture (CIAT), Cali, Colombia.
- Manabu Ishitani**, International Center for Tropical Agriculture (CIAT), Cali, Colombia.
- Sergio Iraçu Gindri Lopes**, Rio Grande do Sul State Rice Institute (IRGA), Cachoeirinha, Rio Grande do Sul, Brazil.
- Mathias Lorieux**, DIADE Research Unit, Institut de Recherche pour le Développement (IRD), Montpellier, France; International Center for Tropical Agriculture (CIAT), Cali, Colombia.
- Albino Maggio**, Department of Agricultural Science, University of Naples “Federico II”, Portici, Italy.
- Soheila Maleki**, USDA-ARS-SRRC, New Orleans, LA, USA.
- Alfredo Marin**, Argentinian Institute for Agricultural Research (INTA), Corrientes, Argentina.
- César P. Martínez**, International Center for Tropical Agriculture (CIAT), Cali, Colombia.
- Sebastián Martínez**, National Agricultural Research Institute (INIA), Montevideo, Uruguay.
- Federico Molina**, National Agricultural Research Institute (INIA), Montevideo, Uruguay.
- Gloria Mosquera**, International Center for Tropical Agriculture (CIAT), Cali, Colombia.
- Teresa Mosquera**, National University of Colombia – Bogotá, Bogotá, DC Colombia.
- Rodomiro Ortiz**, Department of Plant Breeding, Swedish University of Agricultural Sciences, Alnarp, Sweden.

- Peggy Ozias-Akins**, Department of Horticulture and Institute of Plant Breeding, Genetics and Genomics, University of Georgia, Tifton Campus, Tifton, GA, USA.
- Orlando Peixoto**, Brazilian Enterprise for Agricultural Research (Embrapa Rice and Beans), Santo Antonio de Goiás, Brazil.
- Fernando Pérez de Vida**, National Agricultural Research Institute (INIA), Montevideo, Uruguay.
- Naveen Puppala**, Agricultural Science Center at Clovis, New Mexico State University, Clovis, NM, USA.
- Juan Rosas**, National Agricultural Research Institute (INIA), Montevideo, Uruguay.
- Michael Selvaraj**, International Center for Tropical Agriculture (CIAT), Cali, Colombia.
- Giora Simchen**, Department of Genetics, Institute of Life Sciences, The Hebrew University of Jerusalem, Givat-Ram Campus, Jerusalem, Israel.
- Joe Tohme**, International Center for Tropical Agriculture (CIAT), Cali, Colombia.
- Edgar A. Torres**, International Center for Tropical Agriculture (CIAT), Cali, Colombia.
- Michael J. Van Oosten**, Department of Agricultural Science, University of Naples “Federico II”, Portici, Italy.
- Jian-Kang Zhu**, Department of Horticulture and Landscape Architecture, Purdue University, West Lafayette, IN, USA.



Daniel Zohary

Daniel Zohary: Geneticist and Explorer of Plant Domestication

Giora Simchen

Department of Genetics
Institute of Life Sciences
The Hebrew University of Jerusalem
Givat-Ram Campus
Jerusalem, Israel

- I. EARLY DAYS
 - II. GENETIC RELATIONSHIPS AMONG RELATED PLANT SPECIES
 - III. DOMESTICATION OF CROPS AND FRUIT TREES
 - IV. THE SCIENTIFIC APPROACH AND METHODOLOGY OF DANIEL ZOHARY
 - V. THE BOOK
 - VI. AWARDS, HONORS, AND RECOGNITION
 - VII. PERSONALITY
- LITERATURE CITED AND SELECTED PUBLICATIONS OF DANIEL ZOHARY

Daniel Zohary is a botanist, geneticist, and cytogeneticist. He occupies the middle link in a dynasty of three professors of biology at the Hebrew University of Jerusalem. His father, Michael Zohary, was a renowned botanist who laid the foundation to comprehensive accounts and documentation of the Flora of Israel, whereas Daniel's son, Ehud Zohary, is a neurobiologist specializing in functional magnetic resonance imaging of the brain. Professor Zohary (known to all in Israel as Danny) is mostly recognized as an explorer of plant domestication and of the rise of agriculture and Neolithic settlements in the Fertile Crescent. His research and long career are marked by the employment of expertise from different scientific disciplines, such as botany, cytogenetics,

Plant Breeding Reviews, Volume 38, First Edition. Edited by Jules Janick.
© 2014 Wiley-Blackwell. Published 2014 by John Wiley & Sons, Inc.

population genetics, ecology, and archaeology, and the synthesis of findings obtained in these fields into a coherent evolutionary description of the rise of agriculture. Danny has published more than 100 peer-reviewed papers; unlike most of his colleagues, he was also able to summarize his life work in a comprehensive book on plant domestication, which was published in four successful editions (Zohary and Hopf 1988, 1993, 2000; Zohary et al. 2012).

I. EARLY DAYS

Danny Zohary was born in Jerusalem in 1926. As a teenager with a botanist father, Danny became familiar with the rich flora of the Holy Land and the Middle East and, as a student, already started to look into relationships between plant species, at the level of plant communities and their interaction with ecological factors, and over time, as evolutionary relationships. As an undergraduate student in Botany and Geology at the Hebrew University, Zohary's studies were interrupted in 1947–1949 by his active participation in the Israeli War of Independence; eventually he graduated in 1951. In 1952 he started his Ph.D. studies at the University of California, Berkeley, where his scientific interests took him in two parallel and equally productive directions. For his thesis work with G. Ledyard Stebbins, he investigated the relationships between diploid and tetraploid forms of *Dactylis glomerata*, a common Mediterranean grass. The *Dactylis* complex provided a good example of the success of autotetraploidy, as well as of diploid–tetraploid hybrids and gene flow in natural populations, and the prevalence of supernumerary chromosomes. These studies continued upon Zohary's return to Israel in 1956, and subsequently he became one of the world's experts on polyploidy (both auto- and allopolyploidy), following his mentor Stebbins. The second line of research Zohary undertook while being a graduate student at Berkeley was that of cytogenetics of meiosis in plants, under the guidance of Spencer W. Brown. The most important outcome of these studies was the proof that cytologically observed chiasmata in lily and in maize resulted from previously occurring crossing over events (Brown and Zohary 1955; Zohary 1955), in contrast to the alternative interpretation that chiasmata resulted from overlapping chromatids, which provided opportunities for crossover events (that subsequently did or did not take place).

In the following years, Zohary's interests and academic activities continued along three main tracts of plant biology and agriculture: (i) the genetic relationships among closely related plant species and

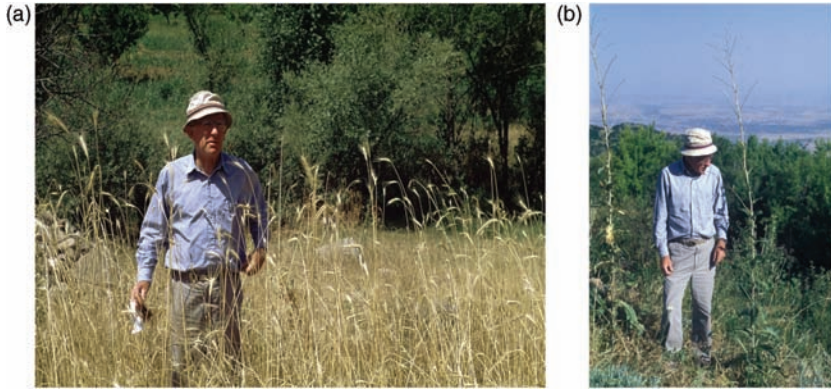


Fig. 1.1. Daniel Zohary collecting wild relatives of domesticated plants. (a) Wild rye (*Secale*) in Turkey, late 1990s. (b) Wild lettuce (*Lactuca*) in Georgia, late 1990s.

populations, (ii) the domestication of various crops and fruit trees in view of their genetic relationships with wild relatives, and (iii) the interface between crop evolution and human societies as shown by archeological findings and the impact these findings had on the origin of agriculture and on human evolution (Fig. 1.1).

II. GENETIC RELATIONSHIPS AMONG RELATED PLANT SPECIES

Zohary's Ph.D. thesis with Stebbins at Berkeley dealt with the *Dactylis glomerata* species complex, which consists of diploid and tetraploid populations across the Mediterranean Basin and the Near East. In locations in Israel where diploid and tetraploid plants coexisted, natural triploid hybrids were found (Zohary and Nur 1959). Plants introduced from wild populations were crossed to each other and their progeny were thoroughly examined cytologically and morphologically. Many diploid plants also contained up to three supernumerary chromosomes, and in some populations, their frequency reached 50% (Zohary and Ashkenazi 1958). Although *D. glomerata* (orchard grass) is an important forage plant, Zohary's interests soon shifted to Mediterranean genera that included the most important crops associated with the rise of agriculture, namely, wheat, barley, oats, peas, and lentils.

In the *Triticum–Aegilops* wheat group, Zohary and his students (Zohary and Feldman 1962; Feldman 1965; Pazy and Zohary 1965) investigated genetic relationships and natural hybridization among the tetraploid

species ($2n = 28$) of the Pleionathera section, which share the C^U genome; the most abundant species in this group in Israel are *Aegilops variabilis*, *Aegilops ovata*, and *Aegilops biuncialis*. The authors concluded that in addition to the common diploid genome, each of these species carries another genome that has been thoroughly modified by hybridization and introgression with neighboring species of the same group. The diploid outbreeding species *Aegilops speltoides* ($2n = 14$, carrying the S genome) and the selfer *Aegilops longissima* (S^1 genome) were both shown to exist as mixed populations, consisting of *speltoides* and *ligustica* plants in *Ae. speltoides*, and *longissima* and *sharonensis* plants in *Ae. longissima* (Ankory and Zohary 1962; Zohary and Imber 1962); natural intercrossing within each pair was demonstrated in these studies. In other cereals, natural hybridization and evidence for genetic introgression were found between *Hordeum spontaneum* and the cultivated barley, *Hordeum vulgare* (Zohary 1959; Tovia and Zohary 1962), as well as among diploid, tetraploid, and hexaploid barley (*Avena*) species (Ladizinsky and Zohary 1968, 1971).

One significant feature common to most of these natural cases of hybridization and introgression was their occurrence in human-disturbed habitats, where new ecological niches were available to the hybrids and their descendants. In later years, Zohary collaborated with Eviatar Nevo and his colleagues and with plant pathologists, on evaluation of genetic variation in plant populations in such human-interfered habitats. Thus, for instance, allozyme variation and disease resistance genes were investigated in natural populations of wild barley and Emmer wheat, in relation to their ecology and interaction with the corresponding cultivated crops (Nevo et al. 1979, 1982; and numerous other joint publications).

III. DOMESTICATION OF CROPS AND FRUIT TREES

The major contributions of Daniel Zohary, for which he is most widely known, relate to the domestication of plants in the Old World and the role of plant domestication in the origin and rise of agriculture and of organized human society. There were numerous studies by Zohary and his associates on these issues that were later summarized in *Domestication of Plants in the Old World*, published by Oxford University Press in four editions. This book will be discussed in a later section of this chapter. Here we shall only highlight major findings by Zohary and colleagues in this area, and the interested reader may refer to the recent edition of the book for further details.

The seminal publication in this area was that of Harlan and Zohary (1966), which analyzed the distribution of wild barley (*H. spontaneum*, $2n = 14$), diploid Einkorn wheat (*Triticum boeoticum*, $2n = 14$), and tetraploid Emmer wheat (*Triticum dicoccoides*, $2n = 28$) in the Near East. The authors showed that the geographical distribution of these plant populations overlaps the earliest known sites of Neolithic farming in the area known as the Fertile Crescent, and may well have been the sites where agricultural practices were first employed. These cereals were probably first harvested in dense stands of the wild plants and subsequently, ~10,000 years ago, used for seed stocks; thus started the development of agricultural practices and the establishment of Neolithic communities. Agricultural domestication, however, was also associated with genetic changes in the plants that facilitated the collection of seed (harvesting). Thus, domestication of barley and wheat involved selection for non-brittleness of the spikes, a characteristic of clear disadvantage to the ancestral wild plants because it compromises seed dispersal. Moreover, a significant insight into the occurrence of present-day dense stands of these wild cereals is that they are found in relatively undisturbed ecological habitats, at the centers of distribution of the species, and their robust morphology (along with large grain) suggests that they could indeed be profitably harvested by man before they were fully domesticated. At the perimeter of distribution of these wild cereals, more weedy races occupy largely disturbed habitats; these do not form continuous stands, and therefore Harlan and Zohary (1966) suggest that they were less likely to have attracted the attention of ancient humans at the onset of agriculture.

Zohary collaborated with the German botanist/archaeologist Maria Hopf on the study of the origin of cultivated legumes (pulses). Their conclusions about domestication of pulses (Zohary and Hopf 1973) were based largely on carbonized seed remains at the sites of early Neolithic farming villages in the Near East, as well as on cytogenetics and on crosses in the laboratory between the cultivated and wild relatives, and on the occasional finding of wild populations containing plants of intermediate morphologies. Thus, it was determined that cultivated pea, *Pisum sativum*, probably originated from *Pisum humile* or *Pisum elatius* (Ben-Zeev and Zohary 1973), and lentil (*Lens culinaris*) may have originated from *Lens orientalis* (Zohary 1972; Garfinkel et al. 1988). The conclusions regarding the origins of broad bean and chickpea were however more tentative (Zohary and Hopf 1973).

The artichoke (*Cynara scolymus*) is another crop that was thoroughly investigated by Zohary and colleagues regarding its origin and domestication (Zohary and Basnizky 1975; Rottenberg and Zohary 1996). These

studies led to the transformation of artichoke from a perennial, vegetatively propagated crop into an annual, seed-planted vegetable, adjusted to modern, mechanized cultivation and new successful cultivars (Basnizky and Zohary 1987, 1994) as shown in the frontpiece photograph taken in the 1990s.

Several important fruit trees originated from wild species still found in the Near East, and thus Zohary's attention naturally focused on the olive, grape, date, and fig (Zohary and Spiegel-Roy 1975). Domestication of all four fruit trees was associated with changes in their breeding behavior, especially the adoption of vegetative propagation. Numerous archaeological remains suggest that domestication of these fruit trees took place several thousands of years after the establishment of Neolithic agriculture in the Near East, which was originally based on cereals (wheat and barley) and pulses (pea and lentil). Zohary also published numerous articles on the wild relatives and domestication of other fruit trees, including plum (Zohary 1992), almond (Browicz and Zohary 1996; Zohary 1998), pistachio (Zohary 1996), wild apple and pear (Zohary 1997), and carob (Zohary 2002).

IV. THE SCIENTIFIC APPROACH AND METHODOLOGY OF DANIEL ZOHARY

Danny Zohary's successful scientific career was largely based on his unusual combination of interests and expertise, which originated in his family background as well as in his early academic training. As a boy he became a competent field botanist, learning plant systematics from his father Michael Zohary, who was an expert on the rich flora of Israel and the Near East. At an early age he could identify most plants in their natural habitats and acquired a profound understanding of the roles different species had in the so-called plant community, consisting of various species that commonly associate with each other and are usually found together in a defined habitat, of a unique ecology. As a student at the Hebrew University of Jerusalem in the late 1940s and early 1950s, Danny majored in Botany and Geology, wrote his MSc thesis on plant communities in the Negev Desert, and published the first vegetation map of the Negev. When he went to Berkeley in the 1950s, Zohary became a real geneticist. He learned cytogenetics from Spencer Brown and plant evolution (especially polyploidy) from G. Ledyard Stebbins, his Ph.D. adviser. This unique combination of skills was the foundation for his prolific scientific work in the subsequent 50–60 years.

Later in his career, Zohary added to his arsenal other scientific tools and approaches that he acquired through collaboration with prominent archaeologists, notably the late Maria Hopf. He thus arrived at a novel understanding of plant domestication by ancient humans, which was primarily based on the unconscious selection of genetic characteristics in crops and trees, which enabled the latter to economically sustain settled human communities. This thesis explained the transformation of nomad groups of food gatherers (and hunters) into people primarily engaged in agriculture. Zohary and colleagues later extended this principle of unconscious selection to the domestication of animals (sheep and goats) (Zohary et al. 1998).

Zohary also collaborated extensively with plant breeders, especially on artichoke breeding (Basnizky and Zohary 1987, 1994) and on cultivation of anemones (*Anemone coronaria*), which became one of the most common ornamental flowers grown in Israel (Horovitz et al. 1975).

V. THE BOOK

The magnus opus *Domestication of Plants in the Old World* may be regarded as the culmination of Danny Zohary's scientific work, as it summarizes his most important papers, as well as those of his colleagues in this field. His collaboration with Maria Hopf started as a joint paper in *Science* on the domestication of pulses (Zohary and Hopf 1973), but soon the additional insight into issues of plant domestication that came from archaeological findings won Zohary's attention and keen interest. He felt that plant domestication and the rise of agriculture involved several steps of unconscious manipulation by humans. In this way desirable traits were selected, and the plants that were chosen and propagated were also modified in important aspects of their genetics, especially regarding the breeding systems and dispersal mechanisms. Subsequently, the chosen plants underwent improvement of their nutritional characteristics and adaptation to the cultivation routines used by the settled human communities, and thus started agriculture. In the four editions of the book, Zohary and his coauthors Maria Hopf and Ehud Weiss tried to understand and follow domestication of each agricultural plant in the Old World, based on the genetic and ecological evidence on the one hand and on a huge amount of archaeological findings on the other. Each edition is a major revision of the previous one and reflects the rapid progress in the field during the period between 1988 and 2012, and the accumulation of new findings in the fields pertinent to the book. The full name of the book (4th edition) is

Domestication of Plants in the Old World: The Origin and Spread of Domesticated Plants in South-West Asia, Europe, and the Mediterranean Basin. The syntheses arrived at by the authors for so many domesticated species are most enlightening and make the reader comprehend that domestication and the rise of agriculture were not merely chance events, but rather the products of predictable interactions between ancient humans and the plant species around them.

The seven major chapters of the book (4th edition) are entitled “Cereals,” “Pulses,” “Oil- and Fibre-Producing Crops,” “Fruit Trees and Nuts,” “Vegetables and Tubers,” “Condiments,” and “Dry Crops” (dye plants). A detailed section is presented on each domesticated species. Thus, in the chapter dealing with pulses, there are separate sections on lentil, pea, chickpea, faba bean, bitter vetch, common vetch, grass pea, Spanish vetchling, fenugreek, and lupins. Preceding the major chapters of the book, there are two important introductory chapters. The first is entitled “Current State of the Art” and consists of a summary of the findings and of the authors’ views on plant domestication. The second chapter presents the methodologies used to study plant domestication.

These chapters give a detailed analysis of archaeological findings and of studies of present-day domesticated plants and their wild progenitors; the studies employ methods of genetics and cytogenetics, DNA marker variation, and geographical distribution of the supposed progenitors in relation to the archaeological sites in which domesticated plant remains were found. The last chapter of the book summarizes the information on domesticated plant remains retrieved from individual Neolithic and Bronze Age sites in the Mediterranean and European areas. All in all, it is a very important book in the field of plant domestication, which will be used by researchers in the field for a long time to come.

VI. AWARDS, HONORS, AND RECOGNITION

Danny has always been fully devoted to his research and scientific work. He was appointed Lecturer at the Hebrew University of Jerusalem in 1956, rose through the ranks and became Professor of Genetics in 1969, and retired in 1997. He was elected Chairman of the Institute of Life Sciences at the Hebrew University and served for a brief period (1979–1983), but did not really enjoy this largely administrative role. Zohary was not after prizes and awards, although he received the J. Belling Award in Genetics from the University of California, Berkeley (1959), and was elected Distinguished Economic Botanist by the

Society for Economic Botany (2003). He has been a member of several learned societies, including being a Fellow of the Linnean Society, London.

Daniel Zohary is recognized as a world leader in the field of plant domestication, largely due to the visibility and impact of his comprehensive book mentioned above (Zohary et al. 2012). Zohary's work served as the basis for descriptions of the rise of agriculture in Jared Diamond's (1997) Pulitzer Prize-winning book *Guns, Germs, and Steel* and it strongly influences the accounts therein of plant domestication by humans in the Fertile Crescent (p. 134–146 and 180–183) and of individual crops (development of nonbitter almonds, p. 118–119, of edible peas, p. 120, and of nonshattering wheat and barley, p. 120–121). Indeed, in the *Further Readings* section recommended by Diamond (1997, p. 435), one finds the following statement: “Among references specifically about plant domestication, Daniel Zohary and Maria Hopf, *Domestication of Plants in the Old World*, 2nd ed. (Oxford: Oxford University Press, 1993), stands out. It provides the most detailed account of plant domestication available for any part of the world.”

VII. PERSONALITY

Danny's boyish appearance and enthusiasm remained part of his personality until advanced age. Even as an established field botanist, his Jeep-mounted expeditions were legendary. He would identify interesting specimens in the field while driving the vehicle, and on a couple of occasions almost caused road accidents by abruptly stopping and running out of the Jeep to look at suspected plants. Some of these field trips were very extensive and took several weeks, during which vast territories were covered, in Turkey, Iran, Armenia, and Georgia (Fig. 1.1). As an MSc student, this writer participated in one of Danny's earliest expeditions to Greece and Turkey in 1962, which lasted 45 days and extended to the eastern borders of Turkey. Other participants were Professor Michael Zohary and Moshe Feldman, a Ph.D. student in Danny's laboratory. This was a most rewarding experience, from which all four of us gained insight into the biology of populations of wild relatives of major crops, and initial understanding of the processes of plant domestication, which Daniel Zohary later elaborated on and developed further.

Among Zohary's numerous ex-students, several have developed successful careers in plant breeding and genetics in Israel: Moshe Feldman, Gideon Ladizinsky, Aliza Vardi, Eli Putievski, Jossi Hillel, and Giora Simchen.



Fig. 1.2. Daniel Zohary with his wife Lilly, 2007.

Danny married in 1949 to Devora and they had three children. Their eldest child Tamar Zohary is an aquatic microbial ecologist with the Israel Oceanographic and Limnological Research Institute, Ruth (Zohary) Shouval is an artist in Texas, and Ehud Zohary is a neurophysiologist at the Hebrew University of Jerusalem, specializing in vision. Danny has six grandchildren and two great-grandchildren. Devora died of cancer in 1976, and a few years later, Danny married Lilly, with whom he has been living happily in Jerusalem for the past 35 years (Fig. 1.2).

Unfortunately, Daniel Zohary is no longer active in research and in academic affairs. The heritage he has left us is evident, however, in his scientific publications, his book, and the impact he has had on the field of plant domestication and evolution.

LITERATURE CITED AND SELECTED PUBLICATIONS OF DANIEL ZOHARY

- Ankori, H., and D. Zohary. 1962. Natural hybridization between *Aegilops sharonensis* and *Ae. longissima*: A morphological and cytological study. *Cytologia* 27:314–324.
- Apirion, D., and D. Zohary. 1961. Chlorophyll lethal in natural populations of the orchard grass (*Dactylis glomerata* L.): A case of polymorphism in plants. *Genetics* 46:393–399.

- Avishai, M., and D. Zohary. 1977. Chromosomes in the *Oncocyclus* Irises. Bot. Gaz. 138:502–511.
- Avishai, M., and D. Zohary. 1980. Genetic affinities among the *Oncocyclus* irises. Bot. Gaz. 141:107–115.
- Basnizky, J., and D. Zohary. 1987. A seed-planted cultivar of globe artichoke. HortScience 22:678–679.
- Basnizky, J., and D. Zohary. 1994. Breeding of seed-planted artichoke. Plant Breed. Rev. 12:253–269.
- Ben-Hod, G., Y. Basnizki, D. Zohary, and A.M. Mayer. 1992. Cynarin and chlorogenic acid content in germinating seeds of globe artichoke (*Cynara scolymus* L.). J. Genet. Breed. 46:63–69.
- Ben-Zeev, N., and D. Zohary. 1973. Species relationships in the genus *Pisum* L. Isr. J. Bot. 22:73–91.
- Browicz, K., and D. Zohary. 1996. The genus *Amygdalus* L. (Rosaceae): Species relationships, distribution and evolution under domestication. Genet. Resour. Crop Evol. 43:229–247.
- Brown, S.W., and D. Zohary. 1955. The relationship between chiasmata and crossing over in *Lilium formosanum*. Genetics 40:850–873.
- Brown, A.H.D., E. Nevo, and D. Zohary. 1977. Associations of alleles at esterase loci in wild barley *Hordeum spontaneum*. Nature 268:430–431.
- Brown, A.H.D., E. Nevo, D. Zohary, and O. Dagan. 1978. Genetic variation in natural populations of wild barley (*Hordeum spontaneum*). Genetica 49:97–108.
- Brown, A.H.D., D. Zohary, and E. Nevo. 1978. Outcrossing rates and heterozygosity in natural populations of *Hordeum spontaneum* Koch in Israel. Heredity 41:49–62.
- Cohen, D., and D. Zohary. 1986. The selection operating on the evolution equilibrium of the frequency of sexual reproduction in predominantly asexual populations. p. 765–782. In: S. Karlin and E. Nevo (eds.), Evolutionary processes and theory. Academic Press, London.
- Dagan, J., and D. Zohary. 1970. Wild tetraploid wheats from west Iran cytogenetically identical with Israeli *T. dicoccoides*. Wheat Inform. Serv. 31:15–17.
- Diamond, J. 1997. Guns, germs, and steel. W. W. Norton & Company, London.
- Feldman, M. 1965. Further evidence for natural hybridization between tetraploid species of *Aegilops* section *Pleionathera*. Evolution 19:162–174.
- Gabrielian, E., and D. Zohary. 2004. Wild relatives of food crops native to Armenia and Nakhichevan. Flora Mediterranea 14:5–80.
- Gabrielian, E., and D. Zohary. 2004. Wild relatives of food crops native to Armenia and Nakhichevan. Flora Mediterranea 14:5–80.
- Galili, E., M. Weinstein-Evron, and D. Zohary. 1989. Appearance of olives in submerged Neolithic sites along the Carmel coast Mitkufat Haeven, J. Isr. Prehist. Soc. 22:95–97.
- Garfinkel, Y., M.E. Kislev, and D. Zohary. 1988. Lentil in pre-pottery neolithic B Yiftah'el: additional evidence of its early domestication. Isr. J. Bot. 37:49–51.
- Gerechter-Amitai, Z.K., I. Wahl, A. Vardi, and D. Zohary. 1971. Transfer of stem rust seedling resistance from wild diploid einkorn to tetraploid *durum* wheat by means of triploid hybrid bridge. Euphytica 20:281–285.
- Harlan, J.R., and D. Zohary. 1966. Distribution of wild wheats and barley. Science 153:1074–1079.
- Heywood, V.H., and D. Zohary. 1995. A catalogue of the wild relatives of cultivated plants native to Europe. Flora Mediterranea 5:361–401.
- Horovitz, A., J. Galil, and D. Zohary. 1975. Biological flora of Israel. 6. *Anemone coronaria* L. Isr. J. Bot. 24:26–41.

- Horovitz, A., and D. Zohary. 1966. Spontaneous variation for perianth colour in wild *Anemone coronaria*. *Heredity* 21:513–515.
- Katznelson, J., and D. Zohary. 1967. Diploid and tetraploid *Hordeum bulbosum* L. *Israel J. Bot.* 16:57–62.
- Ladizinsky, G., and D. Zohary. 1968. Genetic relationships between diploids and tetraploids in Series *Eubarbatae* of *Avena*. *Can. J. Genet. Cytol.* 10:68–81.
- Ladizinsky, G., and D. Zohary. 1971. Notes on species delimitation, species relationships and polyploidy in *Avena* L. *Euphytica* 20:380–395.
- Mendelson, D., and D. Zohary. 1972. Behaviour and transmission of supernumerary chromosomes in *Aegilops speltoides*. *Heredity* 29:329–339.
- Moav, J., R. Moav, and D. Zohary. 1967. Spontaneous morphological alternations of chromosomes in *Nicotiana* hybrids. *Genetics* 59:57–63.
- Moseman, J.G., E. Nevo, and D. Zohary. 1983. Resistance of *Hordeum spontaneum* collected in Israel to infection with *Erysiphe graminis hordei*. *Crop Sci.* 23:1115–1119.
- Moseman, J.G., E. Nevo, M.A. El-Morshidy, and D. Zohary. 1984. Resistance of *Triticum dicoccoides* to infection with *Erysiphe graminis tritici*. *Euphytica* 33:249–255.
- Moseman, J.G., E. Nevo, Z.K. Gerechter-Amitai, M.A. El-Morshidy, and D. Zohary. 1985. Resistance of *Triticum dicoccoides* collected in Israel to infection with *Puccinia recondita tritici*. *Crop Sci.* 25:262–265.
- Nevo, E., A.H.D. Brown, and D. Zohary. 1979. Genetic diversity in the wild progenitor of barley in Israel. *Experientia* 35:1027–1029.
- Nevo, E., D. Zohary, A.H.D. Brown, and M. Haber. 1979. Genetic diversity and environmental associations of wild barley, *Hordeum spontaneum*, in Israel. *Evolution* 33:815–833.
- Nevo, E., A.H.D. Brown, D. Zohary, N. Storch, and A. Beiles. 1981. Microgeographic edaphic differentiation in allozyme polymorphisms of wild barley. *Plant Syst. Evol.* 138:287–292.
- Nevo, E., E. Golenberg, A. Beilis, A.H.D. Brown, and D. Zohary. 1982. Genetic diversity and environmental associations of wild wheat, *Triticum dicoccoides*, in Israel. *Theor. Appl. Genet.* 62:241–254.
- Nevo, E., J.G. Moseman, A. Beiles, and D. Zohary. 1984. Correlation of ecological factors and allozymic variations with resistance to *Erysiphe graminis hordei* in *Hordeum spontaneum* in Israel: patterns and application. *Plant Syst. Evol.* 145:79–96.
- Nevo, E., J.G. Moseman, A. Beiles, and D. Zohary. 1985. Patterns of resistance of wild emmer wheat to pathogens: I. Predictive method by ecology and allozyme genotypes for powdery mildew and leaf rust. *Genetica* 67:209–222.
- Nevo, E., D. Zohary, A. Beiles, D. Kaplan, and N. Storch. 1986. Genetic diversity and environmental associations in wild barley *Hordeum spontaneum* in Turkey. *Genetica* 68:203–213.
- Nevo, E., A. Beiles, D. Kaplan, N. Storch, and D. Zohary. 1986. Genetic diversity and environmental associations of wild barley, *Hordeum spontaneum* (Poaceae), in Iran. *Plant Syst. Evol.* 153:141–164.
- Nevo, E., A. Beiles, and D. Zohary. 1986. Genetic resources of wild barley in the Near-East: Structure, evolution and application in breeding. *Biol. J. Linn. Soc.* 27:335–380.
- Orshan, G., and D. Zohary. 1955. Vegetation of the littoral salt marshes in Israel. *Bull. Res. Council. Isr.* 4:363–369.
- Pazy, B., and D. Zohary. 1965. The process of introgression between *Aegilops* polyploids: Natural hybridization between *Ae. variabilis*, *Ae. ovata* and *Ae. biuncialis*. *Evolution* 19:385–394.

- Puteyevsky, E., and D. Zohary. 1970. Behaviour and transmission of supernumerary chromosomes in diploid *Dactylis glomerata*. *Chromosoma* (Berl.) 32:135–141.
- Rottenberg, A., and Zohary, D. 1996. The wild ancestry of the cultivated artichoke. *Genet. Resour. Crop Evol.* 43:53–58.
- Rottenberg, A., D. Zohary, and E. Nevo. 1996. Isozyme relationships between cultivated artichoke and its wild relatives. *Genet. Resour. Crop Evol.* 43:59–62.
- Segal, A., K.H. Dorr, G. Fischbeck, D. Zohary, and I. Wahl. 1987. Genotypic composition and mildew resistance in a natural population of wild barley, *Hordeum spontaneum*. *Plant Breed.* 99:118–127.
- Stebbins, G.L., and D. Zohary. 1959. Cytogenetic and evolutionary studies in the genus *Dactylis*: I. The morphology distribution and inter-relationships of the diploid subspecies. *Univ. Calif. Publ. Bot.* 31:1–40.
- Tovia, T., and D. Zohary. 1962. Natural hybridization between *Hordeum vulgare* and *H. spontaneum*: Corroborative evidence from progeny tests and artificial hybrids. *Bull. Res. Council. Isr.* 11D:43–45.
- Vardi, A., and D. Zohary. 1967. Introgression in wheat via triploid hybrids. *Heredity* 22:541–560.
- Zohary, D. 1953. Ecological studies in the vegetation of the Near Eastern Deserts: III. Vegetation map of the Central and Southern Negev. *Palestine J. Bot.* 6:27–36.
- Zohary, D. 1954. Notes on ancient agriculture in the Central Negev. *Isr. Explor. J.* A4: 17–25.
- Zohary, D. 1955. Secondary centric activity in meiosis of *Lilium formosanum*. *Am. Nat.* 89:50–52.
- Zohary, D. 1955. Chiasmata in a pericentric inversion in *Zea mays*. *Genetics* 40:874–877.
- Zohary, D. 1956. Studies in the polyploid complex of *Dactylis glomerata* L. Ph.D. diss., Univ. California, Berkeley.
- Zohary, D. 1959. Is *Hordeum agriocrithon* the ancestor of six rowed cultivated barley? *Evolution* 13:279–280.
- Zohary, D. 1960. Studies on the origin of cultivated barley. *Bull. Res. Council. Isr.* 9D:21–42.
- Zohary, D. 1965. Colonizer species in the wheat group. p. 404–420. In: H.G. Baker, and G.L. Stebbins (eds.), *The genetics of colonizing species*. Academic Press, New York.
- Zohary, D. 1966. The evolution of genomes in *Aegilops* and *Triticum*. *Proc. 2nd Intern. Wheat Genetics Symposium, Lund, 1963. Hereditas, Suppl. Vol. 2.* p. 207–217.
- Zohary, D. 1970. Centers of diversity and centers of origin. p. 33–42. In: O.H. Frankel, and E. Bennett (eds.), *Genetic resources of plants: Their exploration and conservation*. Blackwell, Oxford.
- Zohary, D. 1970. Wild wheats. p. 239–247. In: O.H. Frankel, and E. Bennett (eds.), *Genetic resources in plants: Their exploration and conservation*. Blackwell, Oxford.
- Zohary, D. 1971. Origin of southwest Asiatic cereals: Wheats, barley, oats and rye. p. 235–260. In: P.H. Davis, P.C. Harper, and I. Hedge (eds.), *Plant life in south-west Asia*. Botanical Society of Edinburgh, Univ. Press, Aberdeen.
- Zohary, D. 1972. The wild progenitor and the place of origin of the cultivated lentil: *Lens culinaris*. *Econ. Bot.* 26:326–332.
- Zohary, D. 1973. The origin of cultivated cereals and pulses in the Near East. p. 307–320. In: J. Wahrman and K.R. Lewis (eds.), *Chromosomes today*, Vol. 4 John Wiley & Sons, Inc., New York.
- Zohary, D. 1973. The fate of natural “hybrid swarms” between *Hordeum spontaneum* and *H. vulgare*. p. 63–64. In: R.A. Nilan (ed.), *Barley genetics II. Proc. 2nd Intl. Barley Genetics Symp.*

- Zohary, D. 1973. Gene-pools for plant breeding. p. 177–183. In: R. Moav (ed.), *Agricultural Genetics* Halstead Press, New York.
- Zohary, D. 1977. Comments on the origin of cultivated broad bean, *Vicia faba* L. *Isr. J. Bot.* 26:39–40.
- Zohary, D. 1983. Wild genetic resources of crops in Israel. *Israel J. Bot.* 32:97–127.
- Zohary, D. 1984. Modes of evolution in plants under domestication. p. 579–586. In: W.F. Grant (ed.), *Plant biosystematics*. Academic Press, Canada.
- Zohary, D. 1986. The origin and early spread of agriculture in the Old World. p. 3–20. In: C. Barigozzi (ed.), *The origin and domestication of cultivated plants*. Elsevier, Amsterdam.
- Zohary, D. 1989. Pulse domestication and cereal domestication: How different are they? *Econ. Bot.* 43:31–34.
- Zohary, D. 1989. Domestication of the Southwest Asian Neolithic crop assemblage of cereals, pulses and flax: The evidence from the living plants. p. 359–373. In: D.R. Harris and G.C. Hillman (eds.), *Foraging and farming: The evolution of plant exploitation*. Unwin & Hyman, London.
- Zohary, D., 1990. Domestication of plants in the Old World: The emerging synthesis. p. 35–44. In: T.L. Markey and J.A.C. Greppin (eds.), *When worlds collide: The Indo-Europeans and the Pre-Indo-Europeans*. Karoma Publishers. Ann Arbor, MI. p. 35–44.
- Zohary, D. 1991. The wild genetic resources of cultivated lettuce (*Lactuca sativa* L.). *Euphytica* 53:31–35.
- Zohary, D., 1991. Conservation of wild progenitors of cultivated plants in the Mediterranean Basin. *Botanika Chronica* 10:467–474.
- Zohary, D., 1992. Is the European plum, *Prunus domestica* L., a *P. cerasifera* Ehrh. × *P. spinosa* L. allo-polyploid? *Euphytica* 60:75–55.
- Zohary, D., 1992. Domestication of the Neolithic near East crop assemblage. p. 81–86. In: P. C. Anderson (ed.), *Préhistoire de l'Agriculture: Nouvelles Approches Experimentales et Ethno-graphiques*. Monographie du CRA No. 6, CNRS, Paris.
- Zohary, D. 1994. The wild genetic resources of the cultivated olive. In: S. Lavee and I. Klein (eds.), *Proceedings of the second international symposium on olive growing*. ISHS.
- Zohary, D. 1995. Lentil: *Lens culinaris* (Leguminosae – Papilionoidae). p. 271–274. In: J. Smartt and N.W. Simmonds (eds.), *Evolution of crop plants*. 2nd ed. Longman, UK.
- Zohary, D. 1995. Fig: *Ficus carica* (Moraceae). p. 366–370. In: J. Smartt and N.W. Simmonds (eds.), *Evolution of crop plants*. 2nd ed. Longman, UK.
- Zohary, D. 1995. Olive: *Olea europaea* (Oleaceae). p. 379–382. In: J. Smartt and N.W. Simmonds (eds.), *Evolution of crop plants*. 2nd ed. Longman, UK.
- Zohary, D. 1995. The domestication of the grape-vine *Vitis vinifera* L. p. 23–30. In: P. McGovern, S. Fleming, and S. Katz (eds.), *The origins and ancient history of wine*. Gordon & Breach Science Publ., New York.
- Zohary, D., 1996. The mode of domestication of the founder crops of Southwest Asian agriculture. p. 142–158. In: D.R. Harris (ed.), *The origins and spread of agriculture and pastoralism in Eurasia*. Univ. College London Press, London.
- Zohary, D., 1996. The genus *Pistacia* L. p. 1–11. In: S. Padulosi, T. Caruso, and E. Barone (eds.), *Taxonomy, distribution, conservation and uses of Pistacia genetic resources*. Report of a workshop, 29–30 June 1995, Palermo, Italy. *Int. Plant Genet. Resour. Inst.*, Rome, Italy.
- Zohary, D. 1997. Speciation patterns in predominantly self-pollinated Mediterranean annuals. *Lagascalia* 19:281–288.
- Zohary, D. 1997. Wild apples and wild pears. In: B. Valdes, V.H. Heywood, P.M. Raimondo, and D. Zohary (eds.) *Proc. workshops on conservation of the wild relatives of European cultivated plants*. *Boccone* 7:409–416.

- Zohary, D. 1997. Genetic systems: An overview. In: B. Valdes, V.H. Heywood, P.M. Raimondo, and D. Zohary (eds.) Proc. workshops on conservation of the wild relatives of European cultivated plants. *Bocconea* 7:127–131.
- Zohary, D. 1997. Modes of evolution in ornamental geophytes. *Acta Hort.* 430:29–32.
- Zohary, D. 1998. The diffusion of south and east Asian and of African crops into the belt of Mediterranean agriculture. p. 123–134. In: H.D.V. Prendergast, N.I. Etkin, D.R. Harris, and P.J. Houghton (eds.), *Plants for food and medicine*. Royal Botanical Gardens, London, UK.
- Zohary, D. 1998. Taxonomy of the almonds. *Nucis Newsletter* (Information Bulletin on the Research Network on Nuts. FAO, CIHEAM) No.7, p. 5–6.
- Zohary, D. 1999. Speciation under self-pollination. p. 301–307. In: S.P. Wasser (ed.), *Evolutionary theory and processes: Modern perspectives*. Kluwer, The Netherlands.
- Zohary, D. 1999. Monophyletic vs. polyphyletic origin of the crops on which agriculture was founded in the Near East. *Genet. Resour. Crop Evol.* 46:133–142.
- Zohary, D. 1999. Domestication of the Neolithic Near Eastern crop assemblage. p. 42–50. In: P.C. Anderson (ed.), *Prehistory of agriculture: New experimental and ethnographic approaches*. Monograph 40, Inst. Archaeology, Univ. California, Los Angeles.
- Zohary, D. 2001. Domestication of crop plants. p. 217–227. In: S.A. Levin (ed.), *Encyclopedia of biodiversity*. Vol. 2. Academic Press, San Diego.
- Zohary, D. 2002. Domestication of the carob (*Ceratonia siliqua* L.). *Isr. J. Plant Sci.* 50 (Suppl.): 141–145.
- Zohary, D. 2003. Unconscious selection in plants under domestication. p. 121–128. In: H. Knüpfner and J. Ochsmann (eds.), *Rudolf Mansfeld and plant genetic resources*. Schriften zu Genetischen Ressourcen, Band 22. ZADI, Bonn.
- Zohary, D. 2004. Crop domestication: Founder crops. p. 336–339. In: R.M. Goodman (ed.), *Encyclopedia of plants and crops sciences*. Marcel Dekker, New York.
- Zohary, D. 2004. Crop domestication: Role of unconscious selection. p. 340–342. In: R.M. Goodman (ed.), *Encyclopedia of plants and crops sciences*. Marcel Dekker, New York.
- Zohary, D. 2004. Unconscious selection and the evolution of domesticated plants. *Econ. Bot.* 58:5–10.
- Zohary, D., and Ashkenazi, I. 1958. Different frequencies of supernumerary chromosomes in diploid populations of *Dactylis glomerata* in Israel. *Nature* 182:477–478.
- Zohary, D., and J. Basnizky. 1975. The cultivated artichoke—*Cynara scolymus*: Its probable wild ancestors. *Econ. Bot.* 29:233–235.
- Zohary, D., and Z. Brick. 1961. *Triticum dicoccoides* in Israel: Notes on its distribution, ecology and natural hybridization. *Wheat Inform. Serv.* 13:6–8.
- Zohary, D., and M. Feldman. 1962. Hybridization between amphidiploids and the evolution of polyploids in the wheat (*Aegilops-Triticum*) group. *Evolution* 16:44–61.
- Zohary, D., J.R. Harlan, and A. Vardi. 1969. The diploid progenitors of wheat and their breeding value. *Euphytica* 18:58–65.
- Zohary, D., and M. Hopf. 1973. Domestication of pulses in the Old World. *Science* 182: 887–894.
- Zohary, D., and M. Hopf. 1988. *Domestication of plants in the Old World*. Oxford Univ. Press, Oxford.
- Zohary, D., and M. Hopf. 1993. *Domestication of plants in the Old World*, 2nd ed. Oxford Univ. Press, Oxford.
- Zohary, D., and M. Hopf. 2000. *Domestication of plants in the Old World*. 3rd ed. Oxford Univ. Press, Oxford.

- Zohary, D., M. Hopf, and E. Weiss. 2012. Domestication of plants in the Old World. 4th ed. Oxford Univ. Press, Oxford.
- Zohary, D., and D. Imber. 1962. Genetic dimorphism in fruit types in *Aegilops speltoides*. *Heredity* 18:223–232.
- Zohary, D., and J. Katznelson. 1958. Two species of subterranean clovers in Israel. *Aust. J. Bot.* 6:177–182.
- Zohary, D., and U. Nur. 1959. Natural triploids in *Dactylis glomerata* L. polyploid complex and their significance for gene flow from diploid to tetraploid levels. *Evolution* 13:311–317.
- Zohary, D., and U. Plitmann, 1979. Chromosome polymorphism, hybridization and colonization in the *Vicia sativa* group (Fabaceae). *Plant Syst. Evol.* 131:143–156.
- Zohary, D., and P. Spiegel-Roy. 1975. Beginning of fruit growing in the Old World. *Science* 187:319–327.
- Zohary, D., E. Tchernov, and L. Kolska-Horowitz. 1998. The role of unconscious selection in the domestication of sheep and goats. *J. Zool.* 245:129–135.