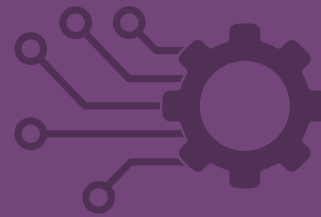


# Control Systems Engineering

# STUDY GUIDE

Seventh Edition



for the Professional Engineering (PE) Licensing Examination



**International Society of Automation**  
Setting the Standard for Automation™

# **Control Systems Engineering (CSE) Study Guide**

*Seventh Edition*



# **Control Systems Engineering (CSE) Study Guide**

**for the  
Professional Engineering (PE)  
Licensing Examination**

***Seventh Edition***



**Notice**

The information presented in this publication is for the general education of the reader. Because neither the author nor the publisher has any control over the use of the information by the reader, both the author and the publisher disclaim any and all liability of any kind arising out of such use. The reader is expected to exercise sound professional judgment in using any of the information presented in a particular application.

Additionally, neither the author nor the publisher has investigated or considered the effect of any patents on the ability of the reader to use any of the information in a particular application. The reader is responsible for reviewing any possible patents that may affect any particular use of the information presented.

Any references to commercial products in the work are cited as examples only. Neither the author nor the publisher endorses any referenced commercial product. Any trademarks or tradenames referenced in this publication, even without specific indication thereof, belong to the respective owner of the mark or name and are protected by law. Neither the author nor the publisher make any representation regarding the availability of any referenced commercial product at any time. The manufacturer's instructions on the use of any commercial product must be followed at all times, even if in conflict with the information in this publication.

Copyright © 2022 International Society of Automation (ISA)  
All rights reserved.

Printed in the United States of America.  
Version: 1.0

ISBN-13: 978-1-64331-209-5 (Paperback)  
ISBN-13: 978-1-64331-210-1 (EPUB)  
ISBN-13: 978-1-64331-211-8 (MOBI)  
ISBN-13: 978-1-64331-212-5 (PDF)

No part of this work may be reproduced, stored in a retrieval system, or transmitted in any form or by any means, electronic, mechanical, photocopying, recording or otherwise, without the prior written permission of the publisher.

ISA  
P.O. Box 12277  
Research Triangle Park, NC 27709

**Library of Congress Cataloging-in-Publication Data in process**

# Contents

<b>Preface</b> .....	<b>vii</b>
<b>General Information</b> .....	<b>1</b>
Introduction .....	1
Licensing Requirements .....	2
Eligibility .....	2
Exam Schedule .....	2
Application Procedures and Deadlines .....	2
Exam Description .....	2
Exam Format .....	2
Exam Content .....	2
Exam Development History .....	2
Exam Procedures and Instructions .....	2
<b>Tips for Taking PE Exams</b> .....	<b>3</b>
<b>References for the CSE Exam</b> .....	<b>5</b>
General References .....	5
Codes and Standards .....	7
International Society of Automation (ISA) .....	7
American National Standards Institute (ANSI) .....	8
American Petroleum Institute (API) .....	9
American Society of Mechanical Engineers (ASME) .....	9
International Electrotechnical Commission (IEC) .....	10
National Fire Protection Association (NFPA) .....	11
National Electrical Manufacturers Association (NEMA) .....	11
Institute of Electrical and Electronics Engineers (IEEE) .....	11
Occupational Safety & Health Administration (OSHA) .....	12
<b>Appendix A CSE Exam Specification</b> .....	<b>13</b>
NCEES Principles and Practice of Engineering Exam .....	13
Control Systems Exam Specifications .....	13

**Appendix B Sample Questions . . . . .19**  
First Session. . . . .20  
Second Session . . . . .35

**Appendix C Answers to Sample Questions . . . . .49**  
Answers. . . . .50  
Answers: First Session. . . . .51  
Answers: Second Session . . . . .56