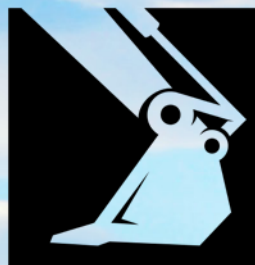


Construction Simulator®



OFFICIAL GUIDE



Publishing Company:

BILDNER Verlag GmbH
Bahnhofstraße 8
94032 Passau
Germany

<http://www.bildner-verlag.de>
info@bildner-verlag.de

ISBN: 978-3-8328-5612-0

Internal number: 100598-EB

Authors: Andreas Zintzsch, Aaron Kübler, Anne-Sophie Hardouin

Special Thanks To Bettina Pflugbeil

Publisher: Christian Bildner

Image sources:

The cover image as well as all images in the book were provided to us with the kind permission of astragon Entertainment. Thank you for that!

© 2022 BILDNER Verlag GmbH Passau

All information in this book is published regardless of any patent protection. The name of the wares are used without guarantee of the free usability. The utmost care was applied during compilation of texts and images. Nevertheless, errors cannot be completely eliminated. The author and the publisher can in no way be held responsible or made legacy liable for any such errors or their potential consequences. The publishing company and the editor are grateful for improvement and for pointing out any errors.

Nearly all hardware and software notations and trademarks mentioned in this book can, without special marking, be subject to trade- or brand mark protection or are protected by patents.

All rights of this book including all parts of it are reserved. The General License Terms of BILDNER Verlag GmbH Passau, Germany, apply.

Additional legal information regarding logos and trademarks associated with the game

©2022 astragon Entertainment GmbH. ©2022 weltenbauer. Software Entwicklung GmbH. Published and distributed by astragon Entertainment GmbH. Developed by weltenbauer. Software Entwicklung GmbH. Construction Simulator, astragon, astragon Entertainment and its logos are trademarks or registered trademarks of astragon Entertainment GmbH. weltenbauer., weltenbauer. Software Entwicklung GmbH and its logos are trademarks or registered trademarks of weltenbauer. The machines in the game may be different from the actual products in shapes, colours and performance. All other intellectual property relating to the trucks, machines, construction equipment, associated brands and imagery (including trademarks and/or copyrighted materials) featured in the game are therefore the property of their respective companies. All rights reserved.

FOREWORD

Construction Simulator is already the 4th generation in which you can build your in-game worlds (at least for PC players). But like almost every good story, this one doesn't just start today.

The Construction Simulator series has been one of the all-stars simulation for years; and more equipment, more features, and more license partners came with each new version.

With the latest version, you can find construction machines from a total of 25 world-renowned brand manufacturers in the game. You'll have more than 70 machines at your disposal to put your construction projects into action.

In its essence, the construction simulator still does exactly what it is supposed to do. It simulates the often small-scale and complex tasks of today's large construction sites - to the delight of many fans.

Work your way from mini transport jobs, which you complete to earn the necessary money, to projects that affect the city and its inhabitants on a large scale.

But in the meantime, feel free to take some time off and cruise around in your pickup. Apart from buildings, the two maps of Construction Simulator offer a great open world experience.

We hope you enjoy the game - and the guide.

Anne-Sophie, Andy, Aaron
and the **BILDER** team

1 GAME START AND SETTINGS 9

1.1	The Main Menu	10
1.2	Settings	11
	Video Settings on the PC	12
	In-game Settings	14
1.3	Starting or Continuing a Game	15
	Select or Create a Profile	15
	Create or Modify a Profile	17
	Single or Multiplayer?	18
	Select or Create a Company	19
	Starting a Game	20
1.4	Hape all Around the world	21
1.5	Game Screen and Game Controls	23
	The Context Menu	25
	Construction View	26

2 THE MENUS 29

2.1	Map	30
	The Icons.....	30
	Filter	31
2.2	Jobs	32
	Offers	32
	Contracts.....	33
	Contract Categories.....	34
	Accept Contract	36
	Skip Section	37
	Check Contract Progress	37

2.3	Campaign	38
	Europe	39
	USA	40
2.4	Company	41
	Upgrade levels	41
	Upgrade level S	42
	Upgrade level M	43
	Upgrade level L.....	44
	Vehicle Hall.....	45
	Warehouse.....	46
	Finances	48
2.5	Milestones.....	50
2.6	Profile.....	52
	Manual	52
	Skills	53
	Progress	55
	Stats.....	56
2.7	The Quick Selection	57

3 VEHICLES 59

3.1	Automobiles.....	60
3.2	Dump Trucks	62
3.3	Articulated Dump Trucks.....	68
3.4	Asphalt Dumpers	72
3.5	Tractors	74
3.6	Tractors with Crane	81

3.7 Trailers 83

3.8 Excavators 88

3.9 Loaders 95

3.10 Dozers 104

3.11 Motor Graders 107

3.12 Soil Compactors 109

3.13 Rotary Drilling Rig 114

3.14 Asphalt Pavers 115

3.15 Cold Planers 118

3.16 Asphalt Compactors 121

3.17 Cranes 126

3.18 Concrete Mixers 131

3.19 Concrete Pumps 137

3.20 Flatbed Cranes 141

3.21 Backhoe Loader 143

 Vehicles by Brand 144

4 THE MAPS 145

4.1 Icon Overview..... 146

4.2 Find Your Machines on the Map..... 148

4.3 Vehicle Dealer 149

4.4 Building Material Dealer..... 150

4.5 Other Important Locations..... 152

 Gravel Plant 152

	Building Yard.....	153
	Steel Trade, Sawmill and Prefabricated Wall Factory.....	154
	Gas Station	154
4.6	The European Map	155
	Localities	156
	European Personalities and Their Campaigns	159
	Locations in Europe.....	160
	Collectibles Europe.....	161
	Speed Cameras Europe.....	162
4.7	The USA Map	163
	Localities	163
	American Personalities and Their Campaigns	168
	Locations in the USA	169
	Map of the Collectibles.....	171
	Map of the Speed Cameras	172

5 TASK COMPLETED 173

5.1	Overview of Tasks	174
5.2	Road Rehabilitation and Road Construction	178
5.3	Leveling, Topsoil Removal, and Bulk Material Delivery..	181
	Leveling	181
	Topsoil Removal.....	182
	Bulk Material Delivery.....	183
5.4	Pouring Concrete	184
5.5	Drilling	186
5.6	Machine Transport	189

5.7	Activate Machine Functions Only in the Construction Area.....	192
5.8	Jobs with Great Distance.....	193
5.9	Construction Sites with an Unfavorable Fast Travel Position.....	194
6	CAMPAIGN STRUCTURE	195
6.1	Campaign Europe.....	197
6.2	Campaign USA.....	205
7	TIPS, TRICKS & MORE	213
7.1	Helpers	214
7.2	Photo Mode	215
7.3	Traffic Rules	218
7.4	Keeping an Eye on Finances.....	219
	Generating Income:	220
	Avoiding Expenses	220
7.5	The Online Multiplayer Mode	221
	Starting a Game as a Company Owner.....	223
	Set Permissions as Owner	224
	Joining a Multiplayer Game.....	225
7.6	Achievements	227



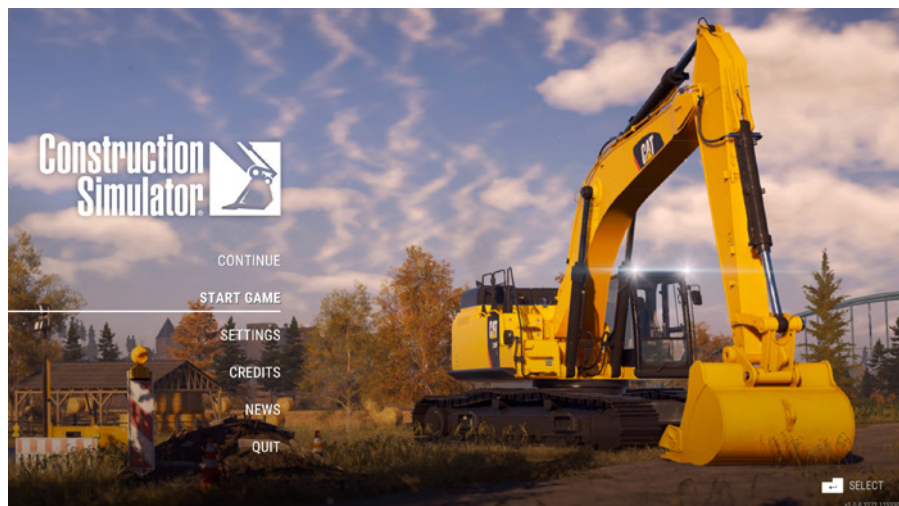
GAME START AND SETTINGS

1

1 GAME START AND SETTINGS

1.1 THE MAIN MENU

After you start the game, you will be in the main menu and will have the following options:



- ▶ **Continue:** Quickly enter your last played scenario and continue playing. This menu item only appears when there is at least one saved game!
- ▶ **Start Game:** With **Start Game** you can create and manage your player profiles, start a new game (a new company), or continue playing one of the existing games.
- ▶ **Settings:** You can adjust video and audio settings here as well as general settings like the game's language.
- ▶ **Credits:** Here you can see all the people and companies involved in the game's creation.

- ▶ **News:** Find out about Construction Simulator's most recent news, such as new DLCs.
- ▶ **Quit:** Ends your game.

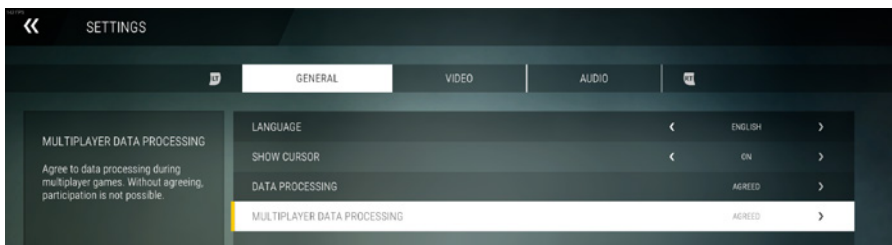
HAPE'S TIP: WHICH BUTTONS DO YOU NEED?

Important for the whole game: At the bottom right of the screen the buttons which you can use in the current menu are displayed. In this example the Enter button is used to select a menu item.



1.2 SETTINGS

Clicking on **Settings** in the main menu opens the settings screen. There you can adjust different options depending on the platform you are using (PC, Xbox, or PlayStation). In the picture below you can see the Xbox controller settings.



General: Under **General** you can set the game's **Language** and you can agree or disagree with the optional Google Analytics tracking. This only collects in-game data for the purpose of improvement (e.g. data on missions or vehicle usage). No other data will be tracked.

Video: Here you can adjust graphics settings. These settings are minimal for Xbox and PlayStation, but very important if you're playing on PC, so we'll talk more about them in the next subsection.

Audio: In the audio settings, you can set the volume for individual elements (e.g. music or voice output).

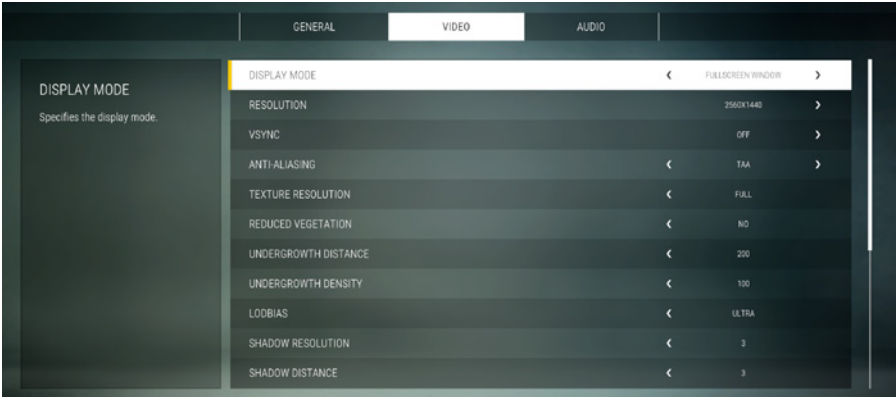
Required buttons: The buttons relevant to this menu are again displayed at the bottom right edge of the screen.



When using an Xbox controller, for example, you can display the privacy policy here (keep the X button pressed) or reset all values of this menu to their default (keep the Y button pressed). The item **Scale display** is also important here (press the X button briefly). On PC or PlayStation, the respective buttons/keys of your controller are displayed!

Video Settings on the PC

Since the video settings have a very strong influence on the performance, we want to give you some tips here. In the console versions, most of these settings cannot be adjusted since the graphics have already been optimized for the respective console.



The game's graphic performance is very dependent on your graphics card. The older your graphics card model is (e.g., old Geforce GTX 1000 series versus a newer Geforce RTX 3000 series) and the lower its class (e.g., a mid-range RTX 2060 graphics card versus an upper-range RTX 2080), the more you will have to reduce the graphics performance. Play the game, and if it stutters during rendering you should reduce settings. Generally, any reduction (e.g., lowering the display distance of the bushes) helps the game run more smoothly.

Display mode: You only need to use Fullscreen window or Windowed mode if you want to frequently switch to another application while playing the game. The Exclusive Fullscreen setting is the most stable and should be your first choice.

Resolution: The resolution of your monitor should be selected here to get the nicest display. Keep in mind that very high resolutions can put a lot of strain on the graphics card. Therefore, you can set the resolution lower and get significantly improved performance.

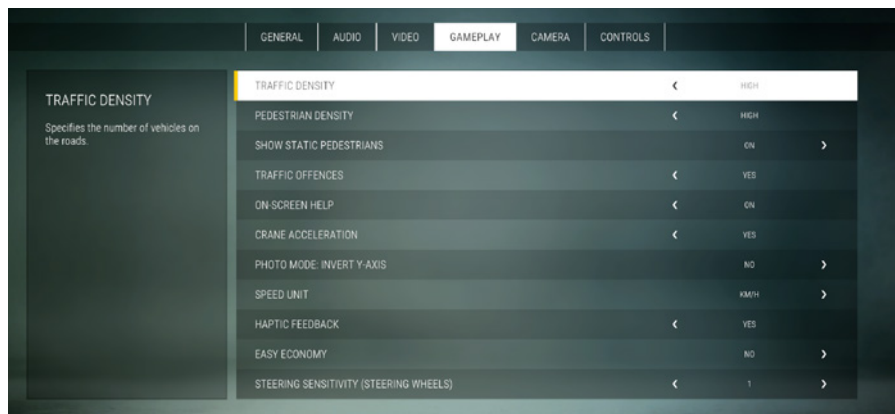
Anti-Aliasing: Anti-Aliasing, also known as Edge smoothing, is a technique that reduces "stair-stepping" in the display. However, the better the technique, the more it will strain the graphics card. Experiment with the different options (e.g., **TAA** or **FXAA**) or disable them altogether to get better performance.

Texture resolution: The texture resolution determines how much memory your graphics card needs. If your graphics card has only 1GB–4GB of graphics memory, it is highly recommended that you reduce the resolution to one half or one quarter.

For all other options, it is usually better to lower almost all values a little, rather than lowering one value by a lot and leaving another value at the highest possible setting.

In-game Settings

If you press the menu button on the controller while a game is running (**ESC key** on PC) and select Settings, three more settings menus become available:



Gameplay: In the gameplay settings, you can toggle various options. Several items are interesting here:

Traffic/Pedestrian Density: How many vehicles or pedestrians do you want to see in the game?

Traffic offences: You'll have to pay fines for accidents with parked cars, for running red lights, and if you get flashed while speeding. If this annoys you, you can disable it here.

Easy economy: If you turn this option on, your assets can't drop below 0 € and speeding and fines won't cost you anything.

Camera: In the game you can rotate the camera around your character or vehicle. In these settings you determine the speed and sensitivity of the camera's reaction to your controller movements.

Controls: Here you can adjust the controls according to your preferences. For every interface, you can change the button assignment of

your controller. If you use multiple different input devices (such as a keyboard, steering wheel, and gamepad on a PC), you can select the device you want in the left pane. There are even some functions that don't have assigned buttons by default.

In the window at the left edge of the screen you can find a short explanation for each selected setting.

1.3 STARTING OR CONTINUING A GAME

To start or continue a game, select **Start Game** from the main menu.

Select or Create a Profile

First you need to select an existing profile or create a new player profile.



The profile determines the appearance and name of your character. Your achieved levels, milestones and skills are also saved in the profile. When you select an existing profile, you will see the following information:

GAME START AND SETTINGS

- ▶ Name of the character / profile
- ▶ Current level
- ▶ Total game time played
- ▶ How much game content has been completed (progress)

Press the **Select** button to continue with this profile.

Press the **Modify** button to change the selected profile. You can modify or reset name, appearance, and skills. Your game progress and companies will be preserved! In this menu you can also delete the selected profile. But be careful, once deleted, you cannot restore it!

You can also create a new profile. Choose an empty profile picture (icon **+**).

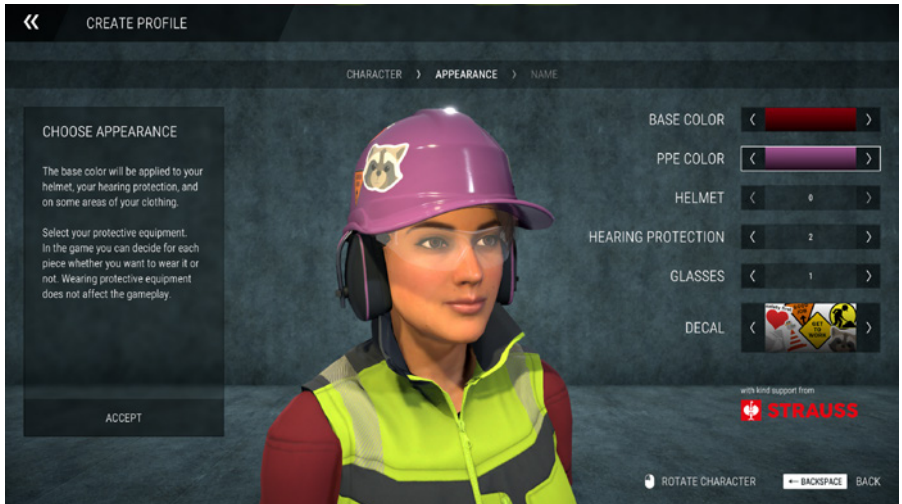
HAPE'S TIP:

One profile is enough for the whole game. With a single profile you can play several companies on different maps in single player and multiplayer mode. Multiple profiles are interesting e.g., for different players or if you like to separate your single player and multiplayer profile.



Create or Modify a Profile

When you create a new profile or modify an existing one, you can choose the appearance of your character in three consecutive screens, customize it and enter a name in the last step.



Choose the settings in the respective screens and select **Accept** to finish. Then you will arrive to the next selection screen.

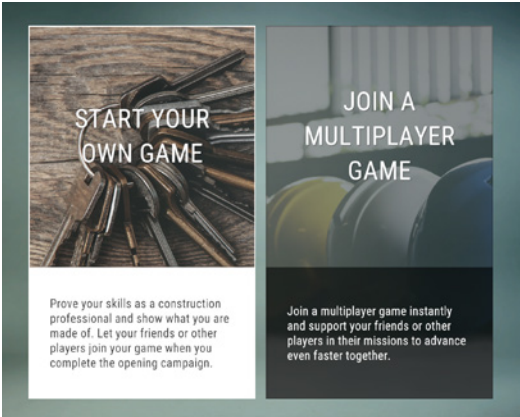
HAPE'S TIP:

Remember that you can change your profile in the game start menu at any time. All of your profile settings can be changed later!



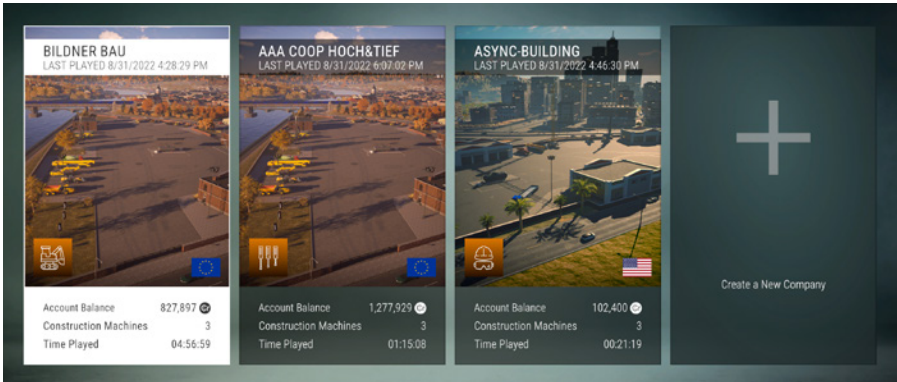
Single or Multiplayer?

In the next step after choosing your profile, you will be asked if you want to start your own game or an online multiplayer game. If you are a beginner, it is recommended that you play your own game first.



If you select **Join multiplayer game** here, you will be taken to the online screen where you can search for ongoing games on the Internet. You will then join the online game of another player and their company as a „helper“. You are then only a co-player and cannot control the company itself. There will be more about this in the Online Game chapter.

However, if you want to start an online game with your own company or just play alone, select **Start your own game** in this menu, because then you can choose the company you want to play with in the next step.



Select or Create a Company

In the next step, you will get to the company selection. You can own several companies with a single profile. Each company has its own capital, name, and the selected map (EU or USA) where it is located. You can later transfer capital between the companies (this will be explained in a later chapter).

For an existing company you will see the most important points:

- ▶ Name and when this company was last played
- ▶ Logo of the company
- ▶ Map on which the company is playing
- ▶ Current account balance
- ▶ How many construction machines the company owns
- ▶ How long this company has been played in real time

Click on a company and use the **Select** button to continue playing with this company.

Press the button for **Edit** to change the logo and name of your company or delete it completely.

HAPE'S TIP:

Attention: Changing the selected map (country) is not possible after creating a company!



Choose a slot (big + icon) to create a new company. When you create a new company, you must first select the country, then a company logo, and finally a name.

HAPE'S TIP:

Owning two companies makes sense – one for each country. A third and fourth company are useful if, for example, you want to have separate single and online games on the same map, but use the same profile (so you can progress faster with the profile).



Starting a Game

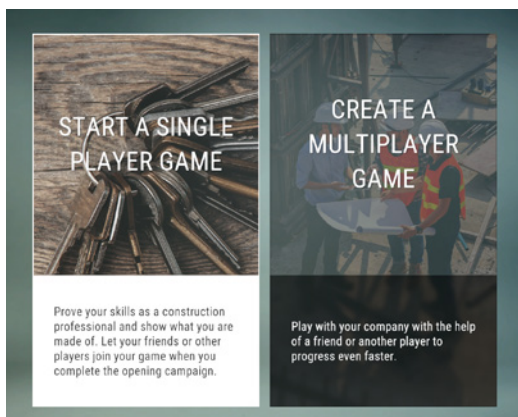
Now you will be asked again if you want to start a single player game or an online multiplayer game.

You can start an online session by choosing

Create a multiplayer game.

An existing game can only be selected here if the first campaign (the tutorial) has been completed. However, you also have the option to skip the tutorial if you're starting anew. In that case the tutorial contracts are considered completed and the company premises in the city are unlocked for you already.

If you want to play alone, select **Start a single player game** in this menu and the game will be loaded.



1.4 HAPE ALL AROUND THE WORLD

His real name is Hans Peter, but all Construction Simulator fans know him only under his short form as Hape - he has become something like the mascot of the Construction Simulator.



Even in the first version of Construction Simulator from 2012, Hape was the foreman who taught the player the construction basics. And Hape remained faithful to the construction simulator. In the 2015 version, he was again the mentor and foreman of the player.

And so he is in the current version from 2022. Hape has now grown considerably more hair, but it has also become grayer. It looks like Hape has finally made it: while he was still a foreman in the older versions, he now owns the company both in Germany and in the U.S., which can also be clearly read in the American advertising: Hape Construction Co., Inc.



After the first campaign, Hape leaves the company to you and retires, but continues to be at your side with advice and support. And we're sure we haven't seen the last of Hape.

Here are a few fun facts you may not have known about Hape:

- ▶ Hape has grown more hair in each part, both on his head and face.
- ▶ He loves cheap burritos from the gas station, even though he doesn't take well to them.
- ▶ In each part, he is rich in experience but poor in a bank account.
- ▶ He's a bit grumpy but warm and helpful.

And to thank Hape for his 10 years of service in Construction Simulator, the Bobblehead DLC even includes a Hape bobblehead doll that stands on the dashboard in select vehicles and happily shakes his head when you lose gravel unnecessarily in a corner at too much speed.

