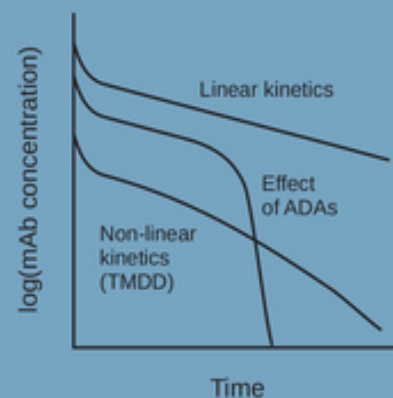
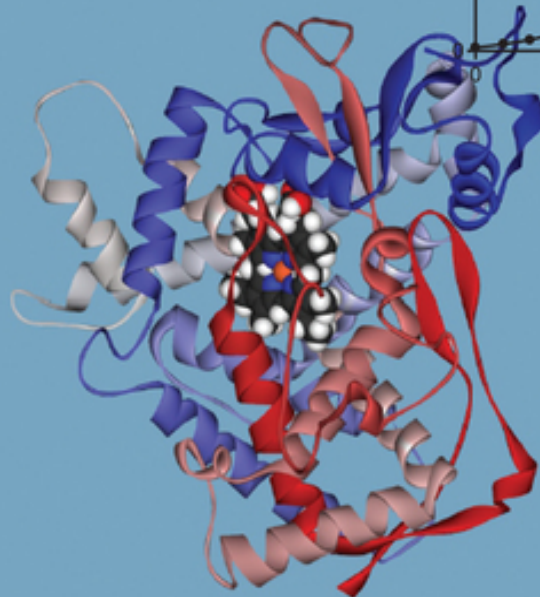
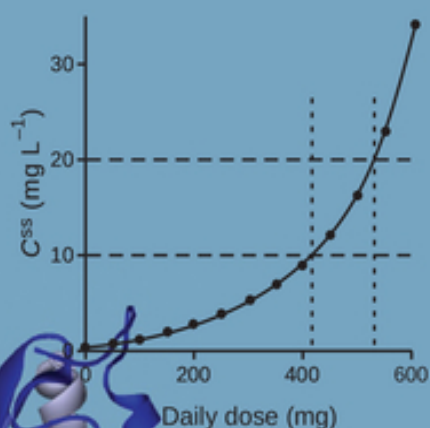
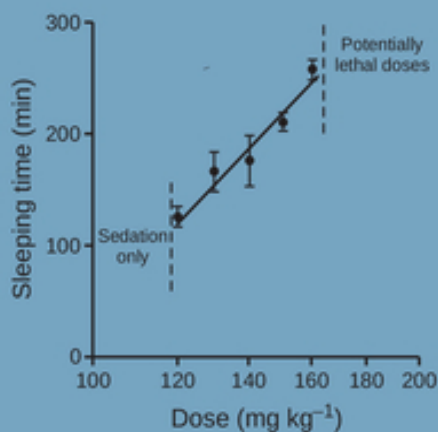


Second Edition

Drug Disposition and Pharmacokinetics

PRINCIPLES AND APPLICATIONS FOR MEDICINE,
TOXICOLOGY AND BIOTECHNOLOGY

Stephen H. Curry
Robin Whelpton



WILEY

Table of Contents

[Cover](#)

[Title Page](#)

[Copyright Page](#)

[Preface](#)

[1 Setting the Scene](#)

[1.1 Introduction](#)

[1.2 Concepts and terminology: disposition and pharmacokinetics](#)

[1.3 Pharmacokinetic parameters](#)

[1.4 Time-concentration-effect relationships](#)

[1.5 Properties of drugs and xenobiotics](#)

[1.6 Quality of the data](#)

[1.7 References](#)

[2 Drug Disposition and Fate](#)

[2.1 Introduction](#)

[2.2 Transport proteins](#)

[2.3 Absorption](#)

[2.4 Distribution](#)

[2.5 Metabolism](#)

[2.6 Excretion](#)

[2.7 References](#)

[3 Pharmacokinetic Modelling](#)

[3.1 Introduction](#)

[3.2 Fundamental concepts](#)

[3.3 Elimination](#)

[3.4 Intravenous infusions](#)

[3.5 First-order input and elimination](#)

[3.6 Areas under the plasma concentration-time curve: trapezoidal method](#)

[3.7 Statistical moment theory](#)

[3.8 Bioavailability and bioequivalence](#)

[3.9 Physiological modelling](#)

[3.10 Population kinetics](#)

[3.11 References](#)

[4 Pharmacokinetics of Metabolism and Excretion](#)

[4.1 Introduction](#)

[4.2 Metabolite kinetics](#)

[4.3 Kinetics of urinary excretion](#)

[4.4 Excretion in faeces](#)

[4.5 References](#)

[5 Quantitative Pharmacological Relationships](#)

[5.1 Introduction](#)

[5.2 Concentration-effect relationships and dose-response curves](#)

[5.3 Concentration-effect relationships *in vivo*](#)

[5.4 Time-Dependent Models](#)

[5.5 PK-PD modelling](#)

[5.6 References](#)

[6 Predictive Pharmacokinetics](#)

[6.1 Introduction](#)

[6.2 Physiochemical properties](#)

[6.3 Metabolic stability](#)

[6.4 Plasma protein and tissue binding and blood/plasma ratios](#)

[6.5 Hepatic clearance](#)

[6.6 Experimental methods of assessing transfer across biological membranes](#)

[6.7 Allometric scaling](#)

[6.8 *In silico* predictions and PBPK modelling](#)

[6.9 Microdosing studies](#)

[6.10 Translational science](#)

[6.11 References](#)

[7 Disposition of Peptides and Other Biological Molecules](#)

[7.1 Introduction](#)

[7.2 Chemical aspects](#)

[7.3 Assay methods](#)

[7.4 Pharmacokinetics](#)

[7.5 Plasma kinetics and pharmacodynamics](#)

[7.6 Examples of particular interest](#)

[7.7 References](#)

[8 Monoclonal Antibodies](#)

[8.1 Introduction](#)

[8.2 Nomenclature](#)

[8.3 Circulation of monoclonal antibodies](#)

[8.4 Pharmaceutical and DMPK aspects](#)

[8.5 Development of orally administered monoclonal antibodies](#)

[8.6 Optimizing pharmacokinetic and pharmacodynamic properties](#)

[8.7 Two highlighted early and durable examples](#)

[8.8 PBPK modelling](#)

[8.9 Antibody-drug conjugates](#)

[8.10 References](#)

9 Drug Metabolism and Pharmacokinetics in Veterinary Sciences

9.1 Introduction

9.2 Areas of practice

9.3 Scientific approach including allometric scaling

9.4 Information organized by pharmacokinetic processes

9.5 Information organized by species and drugs

9.6 Some drugs unique to veterinary science

9.7 Accidental exposure: toxicology – drugs used by humans that are dangerous to animals

9.8 Residue analysis

9.9 References

10 Factors Affecting Plasma Concentrations

10.1 Introduction

10.2 Pharmaceutical factors

10.3 Weight and obesity

10.4 Food, diet, and nutrition

10.5 Time of day

10.6 Posture and exercise

10.7 Smoking

10.8 References

11 Pharmacogenetics, Pharmacogenomics, and Precision Medicine

11.1 Introduction

11.2 Methods for the study of pharmacogenetics

11.3 N-Acetyltransferase

11.4 Plasma cholinesterase

11.5 Carboxylesterases

[11.6 Cytochrome P450 polymorphisms](#)

[11.7 Glucose-6-phosphate dehydrogenase](#)

[11.8 Alcohol dehydrogenase and acetaldehyde dehydrogenase](#)

[11.9 Thiopurine methyltransferase](#)

[11.10 Phase 2 enzymes](#)

[11.11 Transporters](#)

[11.12 Pharmacodynamic differences](#)

[11.13 Ethnicity](#)

[11.14 Personalized medicine](#)

[11.15 References](#)

[12 Effects of Sex and Pregnancy on Drug Disposition and Pharmacokinetics](#)

[12.1 Introduction](#)

[12.2 Effect of sex on human drug disposition and pharmacokinetics](#)

[12.3 Pregnancy](#)

[12.4 Hormonal effects](#)

[12.5 Quality of the data](#)

[12.6 References](#)

[13 Developmental Pharmacology and Age-related Phenomena](#)

[13.1 Introduction](#)

[13.2 Scientific and regulatory environment in regard to younger and older patients](#)

[13.3 Terminology](#)

[13.4 Dose adjustment](#)

[13.5 Anatomical and physiological differences](#)

[13.6 Age groups](#)

[13.7 Further Examples](#)

[13.8 References](#)

[14 Effects of Disease on Drug Disposition and Pharmacokinetics](#)

[14.1 Introduction](#)

[14.2 Gastrointestinal disorders and drug absorption](#)

[14.3 Congestive heart failure](#)

[14.4 Liver disease](#)

[14.5 Renal impairment](#)

[14.6 Thyroid disease](#)

[14.7 Respiratory Disorders](#)

[14.8 Assessing pharmacokinetics in special populations](#)

[14.9 References](#)

[15 Role of Stereochemistry in Drug Disposition and Pharmacokinetics](#)

[15.1 Introduction](#)

[15.2 Absorption](#)

[15.3 Plasma protein binding](#)

[15.4 Metabolism](#)

[15.5 Excretion](#)

[15.6 Development and marketing of single isomers](#)

[15.7 References](#)

[16 Drug Metabolism and Pharmacokinetics in Drug Interactions and Toxicity](#)

[16.1 Introduction](#)

[16.2 Drug interactions](#)

[16.3 Toxicity](#)

[16.4 References](#)

[17 Drug Monitoring in Therapeutics](#)

[17.1 Introduction](#)

[17.2 General considerations](#)

[17.3 Specific Examples](#)

[17.4 Dose adjustment](#)

[17.5 References](#)

[18 From Antiquity to the Age of Artificial Intelligence](#)

[18.1 Drug disposition: Historical aspects](#)

[18.2 Computerization and automation](#)

[18.3 Intelligence, intellect, and artificial intelligence in DMPK](#)

[18.4 Where are we now and what does the future hold?](#)

[18.5 Postscript](#)

[18.6 References](#)

[Index](#)

[End User License Agreement](#)

List of Tables

Chapter 2

[Table 2.1 Selected examples of SLC and ABC transporters](#)

[Table 2.2 Approximate thicknesses and surface areas of selected mucus membra...](#)

[Table 2.3 Some examples of drug-metabolizing cytochromes](#)

[Table 2.4 Selected examples of oxidation reactions](#)

[Table 2.5 Examples of hydrolysis](#)

Chapter 3

[Table 3.1 *Parameter values used to simulate the curves of Figure 3.2 and cal...*](#)

[Table 3.2 *Data used to simulate Figure 3.6. Adapted from Curry and Whelpton ...*](#)

[Table 3.3 *Non-compartmental approach to determine CL and \$V_{area}\$ from th...*](#)

[Table 3.4 *Example of SMT applied to the data of Figure 3.18 using alternativ...*](#)

[Table 3.5 *Physiological parameters for several species**](#)

Chapter 4

[Table 4.1 *A compilation of pharmacokinetic data for examples of drug pairs u...*](#)

[Table 4.2 *Elimination half-lives derived from faecal excretion data of Figur...*](#)

Chapter 5

[Table 5.1 *Suggested mechanisms of hysteresis. After the data of Louizos et a...*](#)

[Table 5.2 *Ethanol content of blood drawn simultaneously from various parts o...*](#)

[Table 5.3 *Ethanol effects on the ascending and descending limbs of the blood...*](#)

[Table 5.4 *Equilibration half-lives determined using the effect compartment m...*](#)

Chapter 6

[Table 6.1 *Some examples of allometric relationships*](#)

[Table 6.2 *Predicted and actual pharmacokinetic parameters. From Curry et al....*](#)

Chapter 7

[Table 7.1 Some examples of peptides, proteins, and other large molecules use...](#)

[Table 7.2 Apparent volumes of distribution of selected large molecules](#)

Chapter 8

[Table 8.1 Selected examples of monoclonal antibodies. Data from Ryman & Meib...](#)

[Table 8.2 Selected examples of ADCs with cytotoxic agents](#)

Chapter 9

[Table 9.1 Summary of effects of acepromazine maleate after administration of...](#)

Chapter 10

[Table 10.1 Examples of some seminal studies of the factors leading to inequi...](#)

[Table 10.2 A representative selection of examples of apparent volumes of dis...](#)

[Table 10.3 A representative selection of examples of clearance and half-life...](#)

[Table 10.4 Examples of pharmacokinetic parameters showing time-dependent cha...](#)

Chapter 11

[Table 11.1 Seven most reported SNPs in N-acetyltransferase 2](#)

[Table 11.2 Paired plasma half-life values \(days\) for the decline in phenylbu...](#)

[Table 11.3 Examples of substances used to phenotype individuals for drug-met...](#)

[Table 11.4 Selected examples of CYP2D6 alleles](#)

[Table 11.5 Examples of CYP2C9 substrates](#)

[Table 11.6 Selected examples of CYP3A4 and CYP3A5 alleles. Data from Saiz-Ro...](#)

Chapter 12

[Table 12.1 Selected physiological properties in men and women](#)

[Table 12.2 Mean urinary clearance values for sulfadimidine and N-acetylsulfa...](#)

[Table 12.3 Examples of changes in enzyme activity during pregnancy](#)

Chapter 13

[Table 13.1 Development of phase 2 enzymes in human liver](#)

[Table 13.2 GFR as a function of age](#)

[Table 13.3 Half-life of ampicillin in four groups of neonates and infants ag...](#)

Chapter 14

[Table 14.1 Some examples of influences of gastrointestinal pathology on drug...](#)

[Table 14.2 Metabolism of a selection of drugs in hepatic cirrhosis](#)

[Table 14.3 Pharmacokinetic data relevant to drug elimination in anuric patie...](#)

Chapter 15

[Table 15.1 Some terms encountered in stereochemistry](#)

[Table 15.2 Differences in binding of KE-298 to plasma proteins from three sp...](#)

[Table 15.3 IC50 values of each enantiomer of NSAIDs for OAT1, OAT3, MRP2, a...](#)

[Table 15.4 Selected examples of homochiral drugs developed from racemates](#)

Chapter 16

[Table 16.1 Classification drugs based on clinical/safety data. Adapted from ...](#)

[Table 16.2 Mean elimination half-lives in hours of ethylene glycol and metha...](#)

Chapter 17

[Table 17.1 Bioavailability, protein binding, and reference ranges for select...](#)

[Table 17.2 Relationship between nortriptyline plasma concentrations and resp...](#)

[Table 17.3 Reference ranges for plasma concentrations of selected antidepres...](#)

[Table 17.4 Reference ranges for newer antipsychotic drugs. Data from Urban a...](#)

[Table 17.5 Reference ranges for selected antidysrhythmic drugs. Adapted from...](#)

[Table 17.6 Some immunosuppressive drug TDM assays. Data from Flanagan et al....](#)

[Table 17.7 Examples of TDM of monoclonal antibodies](#)

List of Illustrations

Chapter 1

[Figure 1.1 Model curve showing a theoretical relationship between drug effec...](#)

[Figure 1.2 Model curves showing a theoretical relationship between drug effe...](#)

[Figure 1.3 Physostigmine plasma concentrations in a male subject given a 4 m...](#)

[Figure 1.4 Disappearance of physostigmine from plasma samples at room temper...](#)

Chapter 2

[Figure 2.1 Selected examples of human transport proteins and their locations...](#)

[Figure 2.2 Postulated pathways for absorption of drugs via the olfactory epi...](#)

[Figure 2.3 Lymphatic system. \(a\) Macromolecules and particles are taken up b...](#)

[Figure 2.4 Approximate composition of the body.](#)

[Figure 2.5 Example of autoradiographic methodology. \(a\) The animal or tissue...](#)

[Figure 2.6 Brain uptake in rhesus macaque following intranasal administratio...](#)

[Figure 2.7 MALDI-IMSI analysis of the tetrandrine distribution in kidney tis...](#)

[Figure 2.8 Differentiation between \(a\) contaminated hair and \(b\) cocaine use...](#)

[Figure 2.9 Concentrations of thiopental \(logarithmic scale\) in the plasma an...](#)

[Figure 2.10 Simplified schematic diagram of the role of superoxide in the pr...](#)

[Figure 2.11 Selected metabolic pathways for olanzapine. Aliphatic hydroxylat...](#)

[Figure 2.12 Sulfonation of minoxidil.](#)

[Figure 2.13 Formation of salicylic acid.](#)

[Figure 2.14 Metabolism of phenacetin \(acetophenetidin\) and paracetamol \(acet...](#)

[Figure 2.15 Examples of nitroimidazoles used as drugs.](#)

[Figure 2.16 Effect of urine pH on amount of metamfetamine \(methamphetamine\) ...](#)

[Figure 2.17 Enterohepatic cycling. Orally administered drug enters the intes...](#)

Chapter 3

[Figure 3.1 Drug elimination from a one-compartment model assuming first-orde...](#)

[Figure 3.2 Representation of plasma concentrations for a drug that confers t...](#)

[Figure 3.3 Representation of typical one- and two-compartment models. The di...](#)

[Figure 3.4 Simulated decay curve for ethanol \(\$C_0 = 2 \text{ g L}^{-1}\$, \$V_{max} = 8 \text{ g...}\$](#)

[Figure 3.5 Comparison of attainment of steady-state concentrations as a func...](#)

[Figure 3.6 \(a\) Constant rate infusions into a two-compartment model. \(b\) Sem...](#)

[Figure 3.7 Plasma concentrations during a zero-order infusion into a two-com...](#)

[Figure 3.8 Concentrations in the central and peripheral compartments during ...](#)

[Figure 3.9 \(a\) Example of hysteresis: the peripheral concentrations are lowe...](#)

[Figure 3.10 \(a\) Simulated curve representing first-order input and output fo...](#)

[Figure 3.11 Simulated curves for first-order input into a single-compartment...](#)

[Figure 3.12 Set of curves modelled to illustrate the effect of \$k_a\$ on the sha...](#)

[Figure 3.13 \(a\) Simulation of the effect of \$k_a\$ on BAC curves, \$F = 1\$ apart fr...](#)

[Figure 3.14 Effect of a short-half life \(4 h\) on fluctuations between peak a...](#)

[Figure 3.15 Effect of a long-half life \(16 h\) on fluctuations between peak a...](#)

[Figure 3.16 Modelled curves for thiopental plasma concentrations \(a\) after t...](#)

[Figure 3.17 Example of the trapezoid method of calculating AUC for a drug th...](#)

[Figure 3.18 Model data for i.v. injection \(green\) and oral administration \(o...](#)

[Figure 3.19 SMT applied to the data of Figure 3.2. \(a\) Linear scales. \(b\) Lo...](#)

[Figure 3.20 Comparison of plasma concentration-time curves following intrave...](#)

[Figure 3.21 Use of pseudo steady-state conditions to determine \$AUC_{\(0-\infty\)}\$...](#)

[Figure 3.22 Hypothetical physiological model demonstrating how relevant orga...](#)

[Figure 3.23 Hierarchical representation of the main physiological and drug p...](#)

[Figure 3.24 Distance-weighted least squares plot of correlation of time afte...](#)

Chapter 4

[Figure 4.1 A scheme where two metabolites, M1 and M2, are produced in parall...](#)

[Figure 4.2 \(a\) Structures and molecular weights of propranolol and 1-naphthy...](#)

[Figure 4.3 A model of metabolism in which three metabolites, M1, M2, and M3,...](#)

[Figure 4.4 Propranolol is oxidized to 4'-hydroxypropranolol that is conjugated...](#)

[Figure 4.5 Plasma concentrations of 4'-hydroxypropranolol and its sulfate an...](#)

[Figure 4.6 Mean plasma concentrations of propranolol and its 4'-hydroxy meta...](#)

[Figure 4.7 Plasma concentrations of prednisone and prednisolone after a sing...](#)

[Figure 4.8 Sulindac \(a sulfoxide\) is reversibly reduced to pharmacologically...](#)

[Figure 4.9 Plasma diazepam \(green\) and nordazepam \(orange\) concentrations in...](#)

[Figure 4.10 \(a\) Plasma concentrations of fluphenazine after i.m. injection o...](#)

[Figure 4.11 \(a\) Spontaneous decarboxylation of clorazepate dipotassium in ga...](#)

[Figure 4.12 Part of a mammalian liver lobule showing the arrangement of hepa...](#)

[Figure 4.13 Renal clearance as a function of urine flow rate: \(a\) ethanol, d...](#)

[Figure 4.14 Comparison of measured GFR \(mGFR\) and eGFR \(median and range\) es...](#)

[Figure 4.15 Concentrations of ethanol in whole blood \(•\) and urine \(◦\)...](#)

[Figure 4.16 \(a\) Plasma concentrations and urinary excretion rate of fluphena...](#)

[Figure 4.17 Faecal excretion of ¹⁴C-label following temoporfin administratio...](#)

Chapter 5

[Figure 5.1 \(a\) Fraction of receptors occupied \(occupancy\) as a function of d...](#)

[Figure 5.2 Log\(agonist concentration\)-response curves. Agonist A is more pot...](#)

[Figure 5.3 \(a\) Illustration of the influence of the Hill coefficient, \$\gamma\$, on ...](#)

[Figure 5.4 \(a\) Competitive antagonists cause a parallel shift in log\(agonist...](#)

[Figure 5.5 Dose-response curves for depression of standard muscle twitch res...](#)

[Figure 5.6 Dose-response relationship for phenobarbital concentrations \(loga...](#)

[Figure 5.7 Model quantal dose-response curve for psychopharmacology.](#)

[Figure 5.8 Dose-response curves for the teratogenic activity of trypan blue ...](#)

[Figure 5.9 Modelled plasma concentrations for a single compartment with firs...](#)

[Figure 5.10 Comparison of direct, indirect and linked effect models. See tex...](#)

[Figure 5.11 \(a\) Time course of the plasma concentrations of carebazine \(gre...](#)

[Figure 5.12 \(a\) Direct-effect model shows no hysteresis, an Emax \(green\) and...](#)

[Figure 5.13 \(a\) Mean arterial \(○, orange\) and peripheral venous \(●, green\) p...](#)

[Figure 5.14 Plasma concentrations of glutethimide and percentage suppression...](#)

[Figure 5.15 \(a\) Mean plasma concentrations of LSD in five individuals follow...](#)

[Figure 5.16 PK-PD model for lorazepam in a selected subject. \(a\) Plasma conc...](#)

[Figure 5.17 Simulations of the pharmacodynamic response variables \(solid lin...](#)

[Figure 5.18 Linear models of disease progression. \(a\) Addition of a drug pro...](#)

[Figure 5.19 Concentration-effect relationship for isoprenaline in a dog give...](#)

[Figure 5.20 Example of dosing schedule dependence.](#)

Chapter 6

[Figure 6.1 Biopharmaceutical Classification System.](#)

[Figure 6.2 Relationship between observed extraction ratios in perfused rat l...](#)

[Figure 6.3 Effect of plasma protein binding on the extraction of a highly ex...](#)

[Figure 6.4 Effect of plasma protein binding and elimination half-life for fo...](#)

[Figure 6.5 Schematic diagram of the differentiation of Caco-2 cells on a tis...](#)

[Figure 6.6 Allometric relationship between body surface area and species bod...](#)

[Figure 6.7 Allometric plot showing the relationship between systemic clearan...](#)

[Figure 6.8 Comparison of allometric scaling of phenytoin unbound clearance \(...\)](#)

[Figure 6.9 Complex Dedrick plot of rat and human data.](#)

[Figure 6.10 Example of complex PBPK modelling of drug absorption from the GI...](#)

[Figure 6.11 Comparison of three models of drug absorption. Accuracy of predi...](#)

[Figure 6.12 Example of human microdosing. Mean \(\$\pm\$ SD\) plasma concentrations o...](#)

Chapter 7

[Figure 7.1 Somatropin concentrations following s.c. injections of somatropin...](#)

[Figure 7.2 Formula of CCK-8.](#)

[Figure 7.3 Structure of ciclosporin.](#)

[Figure 7.4 Representation of heparin. Heparin consists of repeating disaccha...](#)

[Figure 7.5 Space-filled model of mipomersen showing the phosphorothioate lin...](#)

[Figure 7.6 Vasopressin and desmopressin. Red circles highlight structural di...](#)

Chapter 8

[Figure 8.1 Schematic representation of IgG.](#)

[Figure 8.2 Schematic representation of chimeric and humanized monoclonal ant...](#)

[Figure 8.3 Recirculation of IgG and albumin by the FcRn receptor. IgG is tak...](#)

[Figure 8.4 Representation of different types of kinetics. \(a\) Linear kinetic...](#)

[Figure 8.5 Evaluation of clinical trials for the most commonly identified si...](#)

[Figure 8.6 Half-life and clearance of trastuzumab as a function of dose....](#)

[Figure 8.7 \(a\) PK-PD model for adalimumab; \$C_p\$ = predicted concentration. \(b\)...](#)

[Figure 8.8 Plasma concentrations of a nonspecific mAb in wild type and FcRn-...](#)

[Figure 8.9 Platform model of Shah and Betts \(2012\). \(a\) Representation of th...](#)

[Figure 8.10 Model of Jones et al. \(2019\), illustrating the basic PBPK repres...](#)

[Figure 8.11 Pharmacokinetics of non-specific mAbs in mice showing observed d...](#)

[Figure 8.12 \(a\) Brentuximab vedotin showing the attachment of cytotoxin \(MMA...](#)

[Figure 8.13 Observed and modelled plasma concentrations of trastuzumab emtan...](#)

Chapter 9

[Figure 9.1 Mean plasma concentrations of tulathromycin after successful \(\$n\$ =...](#)

[Figure 9.2 Comparative information on the anatomy of the gastrointestinal tr...](#)

[Figure 9.3 Diclofenac \(a\) and paracetamol \(b\) plasma concentrations in cattl...](#)

[Figure 9.4 Relationship of kidney weight and body weight in five avian speci...](#)

[Figure 9.5 An archival representation of the renal-portal system of a red-ea...](#)

[Figure 9.6 Venous plasma concentration after intravenous injection of acepro...](#)

[Figure 9.7 Concentrations of acepromazine in the plasma of a single cat give...](#)

[Figure 9.8 Esomeprazole plasma concentrations \(mean +SD\) in six dogs treated...](#)

[Figure 9.9 Naloxone pharmacokinetics after i.m. doses of 355.12 \$\mu\$ g kg⁻...](#)

[Figure 9.10 \(a\) Chemical structure of ceftiofur showing the furoyl group in ...](#)

[Figure 9.11 Blood sampling from posterior cardinal vein in a zebrafish larva...](#)

[Figure 9.12 Chemical structure of fipronil.](#)

[Figure 9.13 Selected metabolic pathways of methylxanthines.](#)

[Figure 9.14 Elimination half-life of diclofenac in various avian species. Th...](#)

Chapter 10

[Figure 10.1 Representation of the way a wide variety of factors overlap and ...](#)

[Figure 10.2 13-cis-Retinoic acid \(a\) and 4-oxo-13-cis-reta...](#)

[Figure 10.3 \(a\) BMI as a function of total body weight \(TBW\) in a male, heig...](#)

[Figure 10.4 Indometacin plasma concentrations according to time of dose, aft...](#)

[Figure 10.5 Diversity of circadian rhythms in human physiology showing the p...](#)

[Figure 10.6 \(a\) Plasma nifedipine concentrations following administration of...](#)

[Figure 10.7 \(a\) Maximum concentration and \(b\) area under the curve for glyce...](#)

Chapter 11

[Figure 11.1 Distribution of the percentage of N-acetylsulfadimidine in plasm...](#)

[Figure 11.2 Sulfadimidine \(sulfamethazine\) N-acetyltransferase catalytic act...](#)

[Figure 11.3 \(a\) Duration of apnoea in adult male patients with normal and at...](#)

[Figure 11.4 Hydrolysis of dabigatran etexilate. CES1 hydrolyses the acyl est...](#)

[Figure 11.5 \(a\) Log\(metabolic ratio\) for debrisoquine versus number of funct...](#)

[Figure 11.6 Selected pathways of nicotine metabolism showing the involvement...](#)

[Figure 11.7 \(a\) Initial analysis showing median plasma concentrations of pri...](#)

[Figure 11.8 Increase in exposure \(as assessed by AUC\) in subjects with OATP1...](#)

[Figure 11.9 Effect of genotype on warfarin dosing. Individuals with variant](#)

[Figure 11.10 Representation of frequencies of wild-type CYP2C9\(*1/*1\) and VK...](#)

Chapter 12

[Figure 12.1 Hepatic content of CYP3A2 and rate of 3-hydroxylation of diazepam...](#)

[Figure 12.2 Major metabolic pathways of sulfadimidine in male rats.](#)

[Figure 12.3 Selected metabolic pathways for propofol. Direct conjugation pro...](#)

[Figure 12.4 Comparison of areas under the curve, corrected for dose and weig...](#)

[Figure 12.5 Effect of pregnancy on metabolism of nicotine. KEY:- NIC: nicoti...](#)

[Figure 12.6 Effects of oestradiol and progesterone on mRNA expression of sel...](#)

Chapter 13

[Figure 13.1 Relationship between body surface area and age. Linear regressio...](#)

[Figure 13.2 Unbound oral clearance of \(S\)-warfarin in three age groups: \(a\)...](#)

[Figure 13.3 Relative distribution of lean body weight \(green\), total body wa...](#)

[Figure 13.4 Age-related variation of CYP2D6 protein and CYP2D6 mRNA in human...](#)

Chapter 14

[Figure 14.1 \(a\) Plasma concentration of methyl dopa and \(b\) conjugated methyl...](#)

Figure 14.2 Lidocaine plasma concentrations (mean \pm SD) in seven patients wi...

Figure 14.3 Correlation of unbound metabolic clearance of promazine with gal...

Figure 14.4 Effects of liver disease on conjugation reactions. Broken lines ...

Figure 14.5 Sequential progressive model of hepatic dysfunction: implication...

Figure 14.6 Relationship between enzymatic hydrolysis of suxamethonium and d...

Figure 14.7 The effect of topotecan on (a) neutrophil count (ANC) and (b) pl...

Figure 14.8 (a) Effect of reanal clearance on elimination rate constant for ...

Figure 14.9 Simultaneous determination of i.v. (a) and oral (b) kinetics of ...

Figure 14.10 Plasma fluticasone propionate concentrations (mean \pm SEM) after ...

Chapter 15

Figure 15.1 Simplified scheme illustrating different kinds of isomerism. Ste...

Figure 15.2 Asymmetric substitution produces isomers that are mirror images....

Figure 15.3 Absolute configurations of selected β -blockers. (a) CIP priority...

Figure 15.4 (a) Cis-trans isomerism occurs because the C=C bond cannot rotat...

Figure 15.5 Rapid racemization of thalidomide enantiomers negates use of the...

[Figure 15.6 Crystal structure of HSA in complex with myristate \(blue spheres...](#)

[Figure 15.7 Conformation of 1,4-benzodiazepines.](#)

[Figure 15.8 Stereospecific metabolism of warfarin enantiomers. Major contrib...](#)

[Figure 15.9 Inversion of R-ibuprofen proceeds via CoA intermediates and hydr...](#)

[Figure 15.10 Metabolism of omeprazole to achiral active metabolites.](#)

[Figure 15.11 S- and N-oxidation of thioridazine.](#)

[Figure 15.12 Separation of oxidation products of thioridazine on a 3 \$\mu\$ m sil...](#)

[Figure 15.13 \(a\) Tramadol and three potential glucuronide metabolites. \(b\) L...](#)

[Figure 15.14 \(a\) Hydroxylation of prochiral phenytoin. \(b\) Example of hydrox...](#)

Chapter 16

[Figure 16.1 Effect of \(a\) food and \(b\) gastric pH on the absorption of ketoc...](#)

[Figure 16.2 Inhibition of first-pass metabolism of terfenadine to fexofenadi...](#)

[Figure 16.3 Example of enzyme induction in a patient taking warfarin \(5 mg d...](#)

[Figure 16.4 Interaction of cimetidine and amitriptyline. \(a\) Co-administrati...](#)

[Figure 16.5 \(a\) Isobologram showing differentiation of potentiation, additio...](#)

[Figure 16.6 Clozapine is oxidized to the reactive nitrenium ion that forms G...](#)

[Figure 16.7 Simple representation of oxyhaemoglobin. The porphyrin nitrogen ...](#)

[Figure 16.8 Oxidation of acetanilide and phenacetin.](#)

[Figure 16.9 Postulated mechanisms of paracetamol-induced hepatotoxicity. Hep...](#)

[Figure 16.10 Condensation of pyridoxal phosphate with isoniazid.](#)

[Figure 16.11 Proposed metabolic pathways of isoniazid leading to hepatotoxic...](#)

[Figure 16.12 Chemical structures of phenylacetic acid and phenylpropionic ac...](#)

[Figure 16.13 Examples of rearrangement of acyl glucuronides and suggested me...](#)

[Figure 16.14 Selected metabolic pathways of cocaine.](#)

[Figure 16.15 Oxidative debromination of halothane. Trifluoroacetyl chloride ...](#)

[Figure 16.16 Enzymatic and nonenzymatic transformations of bromobenzene.](#)

Chapter 17

[Figure 17.1 Volumetric blood microsampling devices. \(a\) Mitra \(Neoteryx\) use...](#)

[Figure 17.2 Theophylline is a metabolite of caffeine, but in neonates theoph...](#)

[Figure 17.3 Schematic representation of parameters that have been used for T...](#)

[Figure 17.4 Plasma digoxin concentrations in patients judged to be inadequat...](#)

l-Thyroxine (*see also* Levothyroxine) [8](#), [240](#), [254](#), [352-3](#), [392](#), [420](#), [431](#)

Tiagabine [423](#)

Ticarcillin [331](#)

Time-dependent models of effect [125](#)

Time of day [262](#)

Time-concentration-effect relationships [5](#)

Timing of samples [12](#)

Timolol [21](#)

Tissue binding [26](#), [154](#)

TMDD. *See* [Target mediated drug disposition](#)

Tobacco [35](#), [271](#), [315](#)

Toborinone [339](#)

Tobramycin [331](#), [434](#)

Tolbutamide [16](#), [35](#), [161](#), [253](#), [278](#), [285-6](#), [343-4](#), [352](#), [390](#)

Tolerance [118](#), [130](#), [132-3](#), [143-4](#), [243-4](#), [419](#)

Topotecan [346-7](#)

Torasemide [340](#), [347](#)

Torseamide. *See* [Torasemide](#)

Total body water [4](#), [27-8](#), [112](#), [132](#), [134](#), [256-7](#), [307](#), [311](#), [323-4](#), [329](#), [398](#)

Total body weight [256-7](#), [259](#)

Toxicity [386](#), [396](#)

Toxicokinetics [8](#), [239](#), [400](#)

Tramadol [35](#), [294](#), [377](#)

Transdermal absorption [24](#), [82](#), [369](#), [438-9](#)
Transfer across biological membranes [161](#)
Transport proteins (*see also* individual examples) [15](#)
Transporter polymorphism [294](#)
Transesterification [408](#)
Translational science [174](#)
Tranylcypromine [35-6](#)
Trapezoidal method (rule) [57](#), [72-4](#), [77](#), [80](#)
Trastuzumab [182-3](#), [194](#), [196-8](#), [200-1](#), [207-8](#), [211](#), [213-6](#), [431](#), [452](#)
 ⁸⁶Y- [182](#)
 ⁹⁰Y- [182](#)
 deruxtecan [214](#)
Trazodone [257](#), [271](#)
Triamterene [44](#), [253](#), [347](#)
Trichloroethanol [36](#)
[2,3,5-Trichlorophenoxyacetic acid](#) [109](#)
Triggering [289](#)
Triiodothyronine [325](#), [352-3](#)
Triprolidine [366](#)
Troglitazone [16](#)
Troleandomycin [290](#)
Tropicamide [368](#)
Tryptophan [348](#), [371-2](#)
Tardive dyskinesia [400](#), [426](#)

Tubocurarine [28](#), [123-4](#), [345](#), [364](#), [439](#)
Tulathromycin [223-4](#)
Twins [277](#)
Tyramine [36](#), [424](#)
UDPGA [39](#)
UDP-glucuronosyltransferases [39](#), [106](#), [407](#)
UGT1A1 [39](#), [293](#), [309](#), [311](#), [327-8](#)
UGT1A6 [309](#), [327-8](#)
UGT2B7 [18](#), [39](#), [293](#), [309](#), [311](#), [326](#), [328](#), [345](#)
Ulcerative colitis [198](#), [205](#), [207](#), [336](#), [430](#)
Urinary excretion [44](#)
Urinary excretion kinetics [107](#)
Urate transporter (URAT1) [15-6](#), [44](#), [309](#)
Vaginal drug absorption [23-24](#), [438](#)
Vaginal secretions [48](#)
Valaciclovir [15-6](#)
Valacyclovir. *See* [Valaciclovir](#)
Valproate [285-6](#)
Valproic acid [35](#), [48](#), [62](#), [154](#), [263-5](#), [390](#), [423](#)
Vancomycin [259](#), [309](#), [331](#), [364](#), [426](#), [434](#)
Vasopressin [179](#), [182](#), [191](#)
Vecuronium [259](#), [307](#), [310](#)
Venlafaxine [47](#), [271](#), [286](#), [424-5](#)
Verapamil [16](#), [139](#), [270](#), [306-7](#), [316](#), [343](#), [370](#), [373](#), [390](#),
[394](#), [428](#)

Veterinary applications [220](#)

Vigabatrin [423](#)

Vinblastine [16](#)

Warfarin [6](#), [35](#), [125](#), [129](#), [136](#), [159](#), [161](#), [227](#), [260](#), [285-6](#), [296-7](#), [307](#), [322-3](#), [332](#), [341](#), [343](#), [352](#), [363](#), [371-4](#), [376-7](#), [387](#), [390-1](#), [394-6](#), [398](#), [417](#), [421](#)

Xanthine oxidase [36](#), [292](#), [421](#)

Yttrium (⁹⁰Y) tacaduzumab tetraxetan [197](#)

Zero order [61-3](#), [434](#)

Zolpidem [307](#), [310](#), [316](#), [402](#)

Zonisamide [423](#)

Zuclopenthixol [223](#), [366](#)

decanoate [223](#)