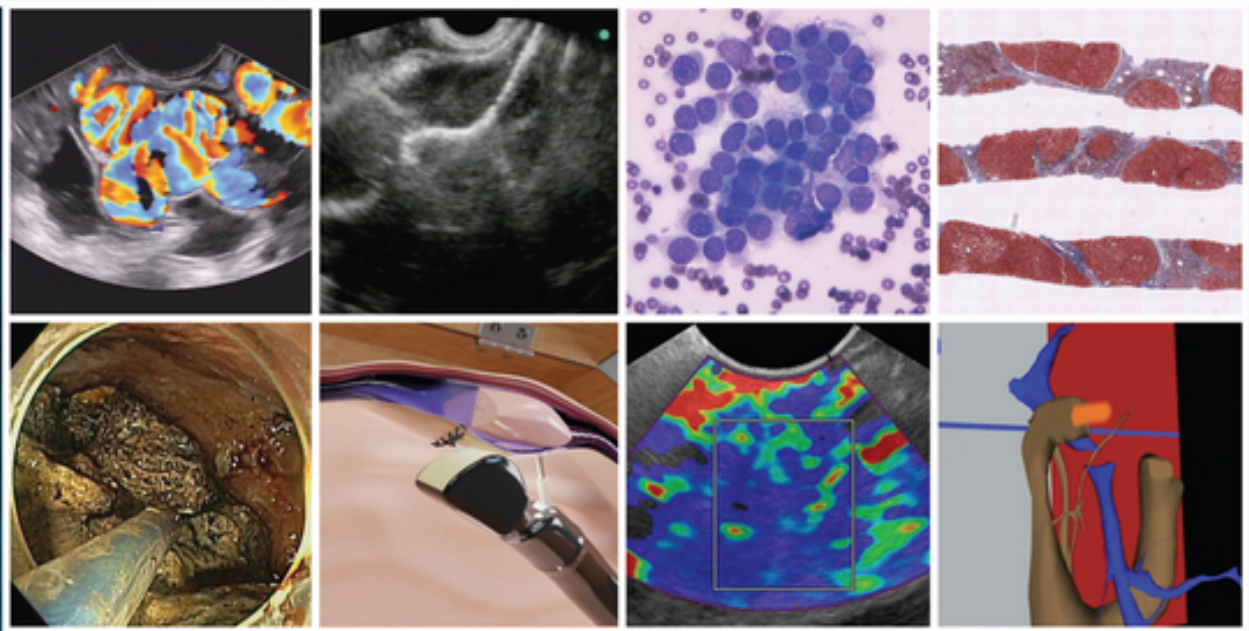


Second Edition

Atlas of Endoscopic Ultrasonography



Edited By

Frank Gress | Thomas Savides

Brenna Casey | Everson L. A. Artifon



WILEY Blackwell

Table of Contents

[Cover](#)

[Title Page](#)

[Copyright Page](#)

[Contributors](#)

[Preface](#)

[About the Companion Website](#)

[1 Normal EUS Anatomy](#)

[1 Normal Human Anatomy](#)

[Introduction](#)

[Normal EUS anatomy from the esophagus](#)

[Normal EUS anatomy from the stomach](#)

[Normal EUS anatomy from the duodenum](#)

[Normal EUS anatomy from the rectum](#)

[Vascular videos](#)

[2 Esophagus](#)

[Layers of the esophageal wall](#)

[Normal radial extraesophageal anatomy \(Video 2.1\)](#)

[Normal linear thoracic anatomy](#)

[3 Normal Mediastinal Anatomy by EUS and EBUS](#)

[Introduction](#)

[Anatomical definitions](#)

[Equipment](#)

[Endoscopic ultrasound technique](#)

[Endobronchial ultrasound](#)

[Complications and safety](#)

Conclusions

4 Stomach

5 Bile Duct

Normal bile duct anatomy

Normal anatomy of the bile duct and gallbladder with radial echoendoscope

Normal anatomy of the bile duct and gallbladder with linear echoendoscope

6 EUS of the Normal Pancreas

Radial examination of the pancreas

Linear examination of the pancreas

Endosonographic appearance of the normal pancreatic parenchyma

7 Liver, Spleen, and Kidneys

Introduction

Liver

Spleen

Kidney

Adrenal glands

8 Anatomy of the Anorectum

Introduction

Examination technique

Normal anatomy

2 Upper and Lower GI EUS

9 Esophageal Cancer

Introduction

Updated American Joint Committee on Cancer staging guidelines for esophageal cancer 2017 and implications for endosonographers

[Role of EUS in staging of esophageal cancer](#)

[Limitations](#)

[Impact of EUS staging on management](#)

[Technique](#)

[References](#)

[10 EUS for Achalasia](#)

[Introduction](#)

[Clinical presentation and diagnosis](#)

[Role of EUS in achalasia](#)

[11 Malignant Mediastinal Lesions](#)

[12 Benign Mediastinal Lesions](#)

[13 Gastric Cancer](#)

[14 Gastric and Esophageal Subepithelial Masses](#)

[Introduction](#)

[Lipoma](#)

[Carcinoid tumors](#)

[Granular cell tumor](#)

[Duplication cyst](#)

[Pancreatic rest](#)

[Varices](#)

[Gastrointestinal stromal cell tumors and leiomyomas](#)

[Glomus tumor](#)

[Gastritis cystica profunda](#)

[Extrinsic compression lesions](#)

[15 Anorectal Neoplasia](#)

[Colorectal cancer staging by EUS](#)

[Endoscopic ultrasound for local recurrence of colorectal carcinoma](#)

Submucosal tumors of the colorectal wall

16 Anal Sphincter Disease

Introduction

Fecal incontinence

Perianal fistula

17 Endometriosis

Introduction

Definition and location

Epidemiology and risk factors

Clinical picture

Diagnosis

Classification

Imaging methods

18 Vascular Anomalies and Abnormalities

Introduction

Aortic arch anomalies

Vascular calcification and plaques

Aneurysms and pseudoaneurysms

Venous thrombosis

Dieulafoy lesions

Neoplasms

Miscellaneous aberrancies

3 Pancreatico-biliary

19 Duodenal and Ampullary Neoplasia

20 Biliary Tract Pathology

21 Gallbladder Pathology

Introduction

Gallbladder stones

[Gallbladder polyps](#)

[Gallbladder carcinoma](#)

[22 Pancreatic Adenocarcinoma](#)

[Introduction](#)

[Tumor identification and diagnosis via fine needle aspiration or fine needle biopsy](#)

[Evaluation of vascular invasion](#)

[Evaluation of peripancreatic lymphadenopathy](#)

[Limitations and complications of EUS in patients with pancreatic cancer](#)

[Conclusion](#)

[References](#)

[23 Pancreatic Malignancy \(Non-adenocarcinoma\)](#)

[Introduction](#)

[Endocrine pancreatic tumors \(Figures 23.1 and 23.2\)](#)

[Primary pancreatic lymphoma \(Figure 23.3\)](#)

[Solid pseudopapillary tumors \(Figure 23.4\)](#)

[Acinar cell carcinoma \(Figure 23.5\)](#)

[Secondary metastatic tumors \(Figure 23.6\)](#)

[Summary](#)

[24 Autoimmune Pancreatitis](#)

[Introduction](#)

[Endoscopic ultrasound imaging \(Video 24.1\)](#)

[Image-enhancing techniques during EUS](#)

[EUS-FNA and EUS-FNB](#)

[Histologic features](#)

[Summary](#)

[25 Pancreatic Cystic Lesions](#)

[Introduction](#)

[Pseudocyst](#)

[Serous lesions](#)

[Mucinous lesions](#)

[Other cystic neoplasms](#)

[26 Intraductal Papillary Mucinous Neoplasms](#)

[Introduction](#)

[Clinical features](#)

[Role of imaging](#)

[Cross-sectional imaging](#)

[Endoscopic ultrasound evaluation](#)

[Management of small IPMN \(\$\leq 3\$ cm\)](#)

[27 Chronic Pancreatitis](#)

[Introduction](#)

[Clinical overview of chronic pancreatitis](#)

[Endoscopic ultrasound imaging of the normal pancreas](#)

[EUS imaging in chronic pancreatitis: historical perspectives](#)

[EUS imaging in chronic pancreatitis: the Rosemont Criteria](#)

[Endoscopic ultrasound imaging in chronic pancreatitis: the future](#)

[28 Liver Pathology](#)

[Introduction](#)

[Cirrhosis](#)

[Fatty liver disease](#)

[Hepatic cysts](#)

[Neoplasms](#)

[Dilated intrahepatic ducts](#)

[4 How to Section](#)

[29 How to Interpret EUS-FNA Cytology](#)

[Introduction](#)

[Technical quality of EUS biopsy material](#)

[Quality of the interpretation](#)

[Integration of pathologic and clinical information](#)

[30 How to do Mediastinal FNA](#)

[31 How to do Pancreatic Mass FNA](#)

[Introduction](#)

[The technique](#)

[32 How to do Pancreatic Cyst FNA](#)

[Introduction](#)

[Technique \(Video 32.1\)](#)

[Summary](#)

[33 How to do Pancreatic Pseudocyst Drainage](#)

[Introduction](#)

[Patient selection](#)

[Requisite instruments and accessories](#)

[Assessment of the pseudocyst by EUS prior to drainage](#)

[Technique for placement of plastic endoprosthesis](#)

[Technique for lumen-apposing metal stent placement](#)

[Post-procedure follow-up](#)

[34 How to do EUS-guided Pancreatic Cyst Chemoablation](#)

[Background](#)

[Pretreatment evaluation](#)

[Patient selection](#)

[Technical aspects of the procedure](#)

[Postoperative care and follow-up](#)

[Conclusions](#)

[References](#)

[35 How to do Celiac Plexus Block](#)

[Introduction](#)

[Technique \(Video 35.1\)](#)

[Complications](#)

[36 How to Place Fiducials for Radiation Therapy](#)

[Introduction](#)

[Equipment](#)

[Techniques](#)

[Periprocedural care](#)

[37 How to Inject Chemotherapeutic Agents](#)

[38 How to do EUS-guided Pelvic Abscess Drainage](#)

[Introduction](#)

[Patient preparation](#)

[Devices and accessories](#)

[Procedural technique](#)

[Clinical outcomes](#)

[Technical limitations](#)

[Conclusions](#)

[39 How to do Doppler Probe EUS for Bleeding](#)

[Background and equipment](#)

[Practical application of DopUS probe](#)

Conclusions

40 How to do Endoscopic Ultrasound-guided Portal Pressure Gradient Measurement

Introduction

Endoscopic ultrasound-guided PPGM technique

References

41 How to do Endoscopic Ultrasound-guided Liver Biopsy

Indications and contraindications

EUS-LB technique

Postprocedure recovery after EUS-LB

Adverse effects

Conclusions

References

42 How to do EUS-guided Treatment of Gastric Varices

Introduction

Technique (Video 42.1)

Complications

43 How to do EUS-guided Arterial Embolization

Background

Technique

Postprocedural management and complications

References

44 How to do EUS-guided Radiofrequency Ablation of Pancreatic Neuroendocrine Tumors

Introduction

Methods for EUS-guided RFA

Indications

[Results for EUS-guided RFA studies](#)

[Conclusion](#)

[References](#)

[45 How to do EUS Pancreatic Duct Access and Drainage](#)

[Introduction](#)

[Indications](#)

[Contraindications](#)

[Before the procedure](#)

[Techniques for drainage](#)

[Outcomes](#)

[Algorithm](#)

[Controversies and future directions](#)

[46 How to do EUS Gallbladder Drainage](#)

[Introduction](#)

[Background concept](#)

[Choice of stents: metal stents versus plastic stents](#)

[EUS-GBD with LAMS](#)

[Postprocedural management](#)

[Long-term management](#)

[Conclusion](#)

[References](#)

[47 How to do an EUS-guided Gastrojejunostomy](#)

[Introduction](#)

[Technique \(Video 47.1\)](#)

[Complications](#)

[References](#)

[48 How to do EUS Elastography](#)

[Introduction](#)

[Technique](#)

[Indications](#)

[Complications](#)

[Further reading](#)

[49 How to do Contrast-enhanced EUS](#)

[Introduction](#)

[Principle of CH-EUS](#)

[Critical points for performing CH-EUS](#)

[Advantages of CH-EUS compared to other contrast-enhanced modalities](#)

[Advantages of CH-EUS compared to conventional EUS](#)

[Evaluation of CH-EUS image for lesions in different organs](#)

[50 How to do EUS-guided Ablation of Pancreatic Neuroendocrine Tumors](#)

[Introduction and indications](#)

[Techniques](#)

[Conclusion and future perspectives](#)

[51 How to do EUS-guided Needle Confocal Laser Endomicroscopy of Pancreatic Cysts](#)

[Confocal laser endomicroscopy technique](#)

[52 How to use ex vivo Models in Teaching Therapeutic Endoscopic Ultrasound](#)

[Introduction](#)

[Ex vivo models](#)

[Conclusion](#)

[53 How to do Endoscopic Necrosectomy](#)

[Introduction](#)

[Preprocedure assessment](#)

[EUS evaluation of walled-off pancreatic necrosis](#)

[Access creation: cystgastrostomy or cystenterostomy](#)

[Necrosectomy tools and technique](#)

[Complication management](#)

[Conclusion](#)

[References](#)

[54 How to Perform Pancreatic Mass Fine Needle Biopsy](#)

[Introduction](#)

[Technique \(Video 54.1\)](#)

[Summary](#)

[55 How to Perform Endoscopic Ultrasound-directed Transgastric Endoscopic Retrograde Cholangiopancreatography \(EDGE\)](#)

[Introduction](#)

[Technique](#)

[Post-EDGE fistula management](#)

[Summary](#)

[Index](#)

[End User License Agreement](#)

List of Tables

Chapter 3

[Table 3.1 Mediastinal lymph node stations with their anatomical correlations...](#)

Chapter 8

[Table 8.1 Anatomical structures and abbreviations.](#)

[Table 8.2 Normal sphincter values. This is highly dependent on age, sex, and...](#)

Chapter 9

[Table 9.1 American Joint Committee on Cancer \(AJCC\) staging of esophageal ca...](#)

Chapter 13

[Table 13.1 American Joint Committee on Cancer \(AJCC\) Staging: TNM classifica...](#)

[Table 13.2 Ann Arbor staging system for gastrointestinal lymphomas.](#)

Chapter 14

[Table 14.1 Endoscopic ultrasound \(EUS\) characteristics of gastric and esopha...](#)

[Table 14.2 Extrinsic compression of the esophagus and stomach.](#)

Chapter 25

[Table 25.1 Demographics and characteristics of pancreatic cystic neoplasms.](#)

Chapter 27

[Table 27.1 The Rosemont Criteria.](#)

[Table 27.2 The Rosemont diagnostic stratification.](#)

Chapter 30

[Table 30.1 TNM staging system for lung cancer \(7th edition\).](#)

Chapter 34

[Table 34.1 Summary of EUS-guided ablation trials \(only studies with a prospe...](#)

Chapter 39

[Table 39.1 Correlation of endoscopic appearance of peptic or anastomotic ulc...](#)

Chapter 45

[Table 45.1 Outcomes of EUS-PDD.](#)

Chapter 46

[Table 46.1 Currently available LAMS on the market.](#)

Chapter 48

[Table 48.1 Elastographic pattern classification.](#)

[Table 48.2 Elastographic quantitative evaluation.](#)

Chapter 50

[Table 50.1 EUS-guided radiofrequency ablation for treatment of pNETs: litera...](#)

[Table 50.2 EUS-guided ethanol injection for treatment of pNETs: literature r...](#)

List of Illustrations

Chapter 1

[Figure 1.1 Visible Human Model of esophagus, stomach, and duodenum. The gree...](#)

[Figure 1.2 Visible Human Model of esophagus, stomach, and duodenum. The red ...](#)

[Figure 1.3 Transaxial cross-section of digital anatomy taken at the level of...](#)

[Figure 1.4 Sagittal cross-section of digital anatomy at the level of the gas...](#)

[Figure 1.5 Visible Human Model of an image plane that is in the location in ...](#)

[Figure 1.6 The cross-sectional anatomy within the plane shown in Figure 1.3....](#)

[Figure 1.7 Visible Human Model with a plane that is in a location similar to...](#)

[Figure 1.8 Cross-sectional anatomy generated within the plane shown in Figur...](#)

[Figure 1.9 Endobronchial view of the carina, showing the right \(RMB\) and lef...](#)

[Figure 1.10 Endobronchial view of the first branch of the right mainstem bro...](#)

[Figure 1.11 Endobronchial view of the bifurcation of the bronchus intermediu...](#)

[Figure 1.12 Endobronchial view of bifurcation of the left mainstem bronchus ...](#)

[Figure 1.13 A Visible Human Model of the bronchial tree.](#)

Chapter 2

[Figure 2.1 \(a\) Radial array image of esophageal wall with small echolayer II...](#)

[Figure 2.2 Radial array image at gastroesophageal \(GE\) junction. IVC, inferi...](#)

[Figure 2.3 Radial array image at the level of the left atrium. PV, pulmonary...](#)

[Figure 2.4 Radial array image at the level of the mitral valve.](#)

[Figure 2.5 Radial array image at the level of the aortic root.](#)

[Figure 2.6 Radial array image at the level of the azygos arch.](#)

[Figure 2.7 Radial array image at the mid aortic arch.](#)

[Figure 2.8 Radial array image at the level of the left carotid and subclavia...](#)

[Figure 2.9 Radial array image at the level of the thyroid.](#)

[Figure 2.10 Linear array image at the mid aorta.](#)

[Figure 2.11 Linear array image at the level of the celiac artery.](#)

[Figure 2.12 Linear array image at the aortic root.](#)

[Figure 2.13 Linear array image at the aortopulmonary window \(APW\). PA, pulmo...](#)

Chapter 3

[Figure 3.1 Mediastinal lymph node stations.](#)

[Figure 3.2 Types of echoendoscopes: \(a\) linear probe; \(b\) endobronchial prob...](#)

[Figure 3.3 Lymph node at station 8 \(between calipers\).](#)

[Figure 3.4 Subcarinal station \(station 7\).](#)

[Figure 3.5 Aortopulmonary window station \(stations 4L, 5 and 6\). AO, aorta; ...](#)

[Figure 3.6 Endobronchial ultrasound \(EBUS\) images of common mediastinal stat...](#)

Chapter 4

[Figure 4.1 Circumferential image of the gastric wall after filling and diste...](#)

[Figure 4.2 Five-layer structure of the gastric wall demonstrating a relative...](#)

[Figure 4.3 Five-layer structure of the gastric wall obtained with an electro...](#)

[Figure 4.4 Nine-layer structure of the gastric wall obtained with a 20 MHz c...](#)

Chapter 5

[Figure 5.1 Bile duct as visualized from the duodenal bulb \(radial echoendosc...](#)

[Figure 5.2 Bile duct followed towards the head of the pancreas from the duod...](#)

[Figure 5.3 Gallbladder from the duodenal bulb \(radial echoendoscope\). CBD, c...](#)

[Figure 5.4 Bile duct and pancreatic duct from the second portion of the duod...](#)

[Figure 5.5 Common hepatic duct and cystic duct as visualized from the duoden...](#)

[Figure 5.6 Bile duct and pancreatic duct from the second portion of the duod...](#)

Chapter 6

[Figure 6.1 Radial EUS: pancreatic body and portal/splenic vein confluence. P...](#)

[Figure 6.2 Radial EUS: portal/splenic vein confluence. PV, portal vein; SMA,...](#)

[Figure 6.3 Radial EUS: pancreas tail. PD, pancreatic duct; SA, splenic arter...](#)

[Figure 6.4 Radial EUS: pancreas tail.](#)

[Figure 6.5 Radial EUS: pancreas neck. PD, pancreatic duct; PV, portal vein; ...](#)

[Figure 6.6 Radial EUS: head of pancreas. DP, dorsal pancreas; VP, ventral pa...](#)

[Figure 6.7 Radial EUS: ampulla.](#)

[Figure 6.8 Radial EUS: head of pancreas. CBD, common bile duct; PD, pancreat...](#)

[Figure 6.9 Radial EUS: head of pancreas, vasculature. CBD, common bile duct;...](#)

[Figure 6.10 Radial EUS: head of pancreas. CBD, common bile duct; PD, pancrea...](#)

[Figure 6.11 Linear EUS: pancreas body. PD, pancreatic duct; SA, splenic arte...](#)

[Figure 6.12 Linear EUS: pancreas tail. PD, pancreatic duct; SV, splenic vein...](#)

[Figure 6.13 Linear EUS: ampulla.](#)

[Figure 6.14 Linear EUS: head of pancreas. CBD, common bile duct; PD, pancrea...](#)

Chapter 7

[Figure 7.1 Image of the liver scanned by radial ultrasound.](#)

[Figure 7.2 Celiac artery imaging by linear ultrasound.](#)

[Figure 7.3 Image of liver by linear ultrasound.](#)

[Figure 7.4 Image of spleen by radial ultrasound.](#)

[Figure 7.5 Image of spleen by linear ultrasound.](#)

[Figure 7.6 Image of left kidney by radial ultrasound.](#)

[Figure 7.7 Image of left kidney by linear ultrasound.](#)

[Figure 7.8 Image of left adrenal gland by radial ultrasound.](#)

[Figure 7.9 Image of left adrenal gland by linear ultrasound.](#)

Chapter 8

[Figure 8.1 \(a\) Levator ani muscle with the puborectal part \(PR\) in between m...](#)

[Figure 8.2 Internal anal sphincter \(echo-poor\) and external anal sphincter \(...\)](#)

Chapter 9

[Figure 9.1 Distal esophageal adenocarcinoma shown to be T1a on pathology. \(a...](#)

[Figure 9.2 T1b adenocarcinoma in a background of Barrett's esophagus at the ...](#)

[Figure 9.3 \(a\) T1b adenocarcinoma at the gastroesophageal junction with cent...](#)

[Figure 9.4 \(a\) T2N1Mx lesion, squamous cell cancer with ulceration 24 cm fro...](#)

[Figure 9.5 \(a\) T2N0Mx lesion, adenocarcinoma of lower thoracic esophagus inv...](#)

[Figure 9.6 T3N3Mx lesion, adenocarcinoma involving the lower thoracic esopha...](#)

[Figure 9.7 \(a\) T3N1Mx adenocarcinoma with friable mass at the gastroesophage...](#)

[Figure 9.8 T4a lesion, adenocarcinoma in lower thoracic esophagus invading t...](#)

[Figure 9.9 T4b lesion, squamous cell cancer in upper thoracic esophagus inva...](#)

Chapter 10

[Figure 10.1 The muscularis propria is divided into two layers, the outer lon...](#)

[Figure 10.2 Normal esophageal wall layer pattern. Normal thickness of muscul...](#)

[Figure 10.3 Thickening of the circular muscle wall layer to 3 mm in a patien...](#)

[Figure 10.4 Thickening of the circular muscle wall layer to an average of 2....](#)

[Figure 10.5 Thickening of the circular muscle wall layer to an average of 3....](#)

[Figure 10.6 Thickening of the circular muscle wall layer to an average of 3....](#)

[Figure 10.7 Uniform thickening of the circular muscle wall layer to an avera...](#)

Chapter 11

[Figure 11.1 American Thoracic Society staging diagram for posterior mediasti...](#)

[Figure 11.2 Metastatic posterior mediastinal melanoma. Endoscopic ultrasound...](#)

[Figure 11.3 Renal cell cancer metastasis. The lesion was identified slightly...](#)

[Figure 11.4 Lung cancer mass. Endoscopic ultrasound-guided fine needle aspir...](#)

[Figure 11.5 Malignant lymph node. The needle is within the rounded, well-dem...](#)

Chapter 12

[Figure 12.1 Benign subcarinal lymph nodes. Note the oval and triangular-shap...](#)

[Figure 12.2 Sarcoid lymph nodes. Note the matted together, draping nodes wit...](#)

[Figure 12.3 Cryptococcal lymph node. These were incidental lymph nodes found...](#)

[Figure 12.4 Duplication cyst. Note the anechoic appearance with acoustic enh...](#)

[Figure 12.5 Enlarged lymph node due to *Blastocystis hominis* infection.](#)

Chapter 13

[Figure 13.1 T1 gastric cancer. This is a 2.2 × 0.5 cm thick tumor confined t...](#)

[Figure 13.2 T2 gastric cancer. This large 4.2 × 3.6 cm exophytic tumor invad...](#)

[Figure 13.3 T3 gastric cancer. This 2.5 × 1.6 cm tumor invades through all l...](#)

[Figure 13.4 T4 gastric cancer. This invasive poorly differentiated cancer in...](#)

[Figure 13.5 Diffuse gastric cancer. The stomach is thickened to 0.8 cm \(norm...](#)

[Figure 13.6 Pseudo-linitis plastica. A patient with breast cancer has metast...](#)

[Figure 13.7 Gastric lymphoma causing a linitis plastica appearance. This pat...](#)

[Figure 13.8 Gastric lymphoma. The five-layer wall pattern is obliterated and...](#)

[Figure 13.9 Perigastric lymphadenopathy in a patient with primary gastric ly...](#)

[Figure 13.10 Ascites. A large pocket of hypoechoic material is seen next to ...](#)

[Figure 13.11 Endoscopic ultrasound-guided fine needle aspiration \(EUS-FNA\) o...](#)

Chapter 14

[Figure 14.1 Lipoma. \(a\) Endoscopic view of lipoma with smooth overlying muco...](#)

[Figure 14.2 Carcinoid tumor. \(a\) Endoscopic view of a carcinoid tumor. \(b\) E...](#)

[Figure 14.3 Granular cell tumor. \(a\) Endoscopic view of esophageal granular ...](#)

[Figure 14.4 Esophageal duplication cysts. \(a\) Endoscopic view of several eso...](#)

[Figure 14.5 Pancreatic rest. \(a\) Endoscopic view of a gastric antral pancrea...](#)

[Figure 14.6 Esophageal varices. \(a\) Endoscopic view of grade 3 esophageal va...](#)

[Figure 14.7 Gastric gastrointestinal stromal tumor \(GIST\). \(a\) Endoscopic vi...](#)

[Figure 14.8 Leiomyoma. \(a\) Endoscopic view of an esophageal leiomyoma. \(b\) E...](#)

[Figure 14.9 Glomus tumor. \(a\) Endoscopic view of a gastric antral glomus tum...](#)

[Figure 14.10 Gastritis cystica profunda \(GCP\). \(a\) Endoscopic view showing G...](#)

[Figure 14.11 Extrinsic compression. \(a\) Endoscopic and EUS view of extrinsic...](#)

Chapter 15

[Figure 15.1 \(a\) A T1 rectal adenocarcinoma \(by radial EUS\) arising in a vill...](#)

[Figure 15.2 \(a\) A rectal adenocarcinoma that appears to be T2 \(penetration i...](#)

[Figure 15.3 Radial EUS of a T3 lesion showing the primary rectal tumor penet...](#)

[Figure 15.4 Radial EUS of the patient in Figure 15.3 showing a 7-mm round, p...](#)

[Figure 15.5 EUS-guided fine needle aspiration of a perirectal lymph node. Th...](#)

[Figure 15.6 Recurrent rectal cancer. During surveillance colonoscopy in a pa...](#)

[Figure 15.7 \(a\) A subepithelial bulge in the rectum from a large intramural ...](#)

[Figure 15.8 Rectal carcinoid. \(a\) A rectal bulge was noted during routine co...](#)

Chapter 16

[Figure 16.1 Schematic diagram of the anal canal. EAS, external anal sphincte...](#)

[Figure 16.2 Normal anal sphincter complex. The internal anal sphincter \(IAS\)...](#)

[Figure 16.3 Normal anal sphincter complex. The internal anal sphincter \(IAS\)...](#)

[Figure 16.4 Forty percent defect in both the internal hypoechoic anal sphinc...](#)

[Figure 16.5 Forty percent defect in external anal sphincter \(EAS\), likely du...](#)

[Figure 16.6 Thirty percent defect in both the internal anal sphincter \(IAS\)...](#)

[Figure 16.7 Transperineal three-dimensional ultrasound images showing the an...](#)

[Figure 16.8 Transverse \(cross-sectional\) 1-mm multislice imaging of the norm...](#)

[Figure 16.9 Perianal fistula. Note that the anechoic tubular structure is ou...](#)

[Figure 16.10 Perianal fistula with small perianal abscess measuring 11 × 7 m...](#)

[Figure 16.11 Perianal abscess and fistula.](#)

[Figure 16.12 Post-hydrogen peroxide injection image of the perianal fistula ...](#)

[Figure 16.13 Perianal fistula. A hyperechoic path is visible, starting on th...](#)

[Figure 16.14 The path of a complex perianal fistula is identified by inserti...](#)

[Figure 16.15 Perirectal abscess. A 36-year-old woman with history of Crohn's...](#)

[Figure 16.16 Anastomotic abscess. A patient with history of sigmoidectomy fo...](#)

Chapter 17

[Figure 17.1 \(a, b\) Classification of intestinal endometriosis according to R...](#)

[Figure 17.2 Endometriosis sites with alteration of the colonic wall of the r...](#)

[Figure 17.3 \(a, b\) Endoscopic view of the area of sigmoid substenosis. \(c\) P...](#)

[Figure 17.4 Radial scanning with two foci in different locations: \(a, b\) rec...](#)

[Figure 17.5 \(a\) Bulging of the upper rectum wall. \(b-d\) Radial exploration o...](#)

[Figure 17.6 \(a, b\) Radial exploration of sites of hypoechoic, homogeneous, s...](#)

[Figure 17.7 \(a, b\) Radial exploration of a heterogeneous hypoechoic focus wi...](#)

[Figure 17.8 \(a, b\) Endoscopic view of the upper rectum showing bulging of th...](#)

[Figure 17.9 \(a, b\) Extrinsic sigmoid compression of a left ovary endometriom...](#)

[Figure 17.10 \(a\) Colonoscopy showing a subepithelial lesion as sigmoid bulgi...](#)

[Figure 17.11 \(a\) Bulging of the rectosigmoid junction. \(b, c\) Sectoral explo...](#)

[Figure 17.12 Endometrial gland and endometrial stroma and superficial coloni...](#)

[Figure 17.13 Radial scanning EUS of two foci of endometriosis located in two...](#)

[Figure 17.14 Glandular cells aspirated from endometrial lining.](#)

Chapter 18

[Figure 18.1 A radial array endoscopic ultrasound image of a calcific aortic ...](#)

[Figure 18.2 A linear array image of the aortopulmonary window with an isoech...](#)

[Figure 18.3 A linear array image showing the aortic root with clot due to an...](#)

[Figure 18.4 Radial array Doppler image of a clot in the splenic vein.](#)

[Figure 18.5 A linear array image of a metastasis \(T\) from breast cancer to t...](#)

[Figure 18.6 A linear array image of a rhabdomyosarcoma infiltrating into the...](#)

Chapter 19

[Figure 19.1 The linear array echoendoscope is in the duodenum directly adjac...](#)

[Figure 19.2 A hypoechoic mass is seen here arising from the ampulla. The mal...](#)

[Figure 19.3 An ampullary lesion is noted endoscopically. On EUS, water is in...](#)

Chapter 20

[Figure 20.1 In this example of a small bile duct malignancy, a focal hypoech...](#)

[Figure 20.2 The linear array echoendoscope is positioned in the second porti...](#)

[Figure 20.3 This 78-year-old woman has unresectable pancreatic cancer. Endos...](#)

[Figure 20.4 This 46-year-old woman presented with elevated liver function te...](#)

Chapter 21

[Figure 21.1 Gallbladder stone \(arrow\) with posterior shadowing.](#)

[Figure 21.2 Gallbladder stone \(arrow\) with posterior shadowing.](#)

[Figure 21.3 Gallbladder sludge \(arrow\).](#)

[Figure 21.4 Gallbladder microlithiasis \(arrows\).](#)

[Figure 21.5 Gallbladder polyps \(arrows\). Notice the lack of shadowing.](#)

[Figure 21.6 Gallbladder polyps \(arrows\). Notice the lack of shadowing.](#)

[Figure 21.7 Gallbladder carcinoma \(arrow\).](#)

[Figure 21.8 Thickened gallbladder wall \(arrow\).](#)

Chapter 22

[Figure 22.1 \(a\) Representative EUS image of a large pancreatic adenocarcinom...](#)

[Figure 22.2 EUS-guided FNA of a pancreatic adenocarcinoma with a 22-gauge ne...](#)

[Figure 22.3 EUS image of a pancreatic adenocarcinoma in the body of the panc...](#)

[Figure 22.4 A 2-cm pancreatic head mass seen to abut and compress the common...](#)

[Figure 22.5 Large pancreatic cancer in the head of the pancreas seen to enca...](#)

[Figure 22.6 A 15-mm peripancreatic lymph node. Node is hypoechoic, round, we...](#)

[Figure 22.7 EUS-guided FNA of a large, 4-cm peripancreatic node in a patient...](#)

Chapter 23

[Figure 23.1 Images obtained from a patient with a gastrinoma following helic...](#)

[Figure 23.2 Following a negative computed tomography \(CT\) to search for a pr...](#)

[Figure 23.3 Linear endoscopic ultrasound imaging of a patient with a pancrea...](#)

[Figure 23.4 Endoscopic ultrasound revealed a large well-circumscribed hypoeoc...](#)

[Figure 23.5 A pancreatic head acinar cell tumor is identified by endoscopic ...](#)

[Figure 23.6 The varied appearance of metastatic tumors to the pancreas is de...](#)

Chapter 24

[Figure 24.1 Classic endoscopic ultrasound appearance of autoimmune pancreati...](#)

[Figure 24.2 Almost classic endoscopic ultrasound appearance of autoimmune pa...](#)

[Figure 24.3 Almost classic endoscopic ultrasound appearance of autoimmune pa...](#)

[Figure 24.4 Endoscopic ultrasound finding of a mass-like lesion in a patient...](#)

[Figure 24.5 Endoscopic ultrasound features of nonspecific chronic pancreatit...](#)

[Figure 24.6 Histologic examination of endoscopic ultrasound-guided Tru-cut b...](#)

[Figure 24.7 IgG₄ immunostaining of the Tru-cut biopsy specimen reveals the f...](#)

Chapter 25

[Figure 25.1 Thick-walled cystic lesion undergoing fine needle aspiration \(FN...](#)

[Figure 25.2 Serous cystadenoma. Multicystic lesion in the body of the pancre...](#)

[Figure 25.3 \(a\) Mucinous cystic neoplasm with multiple septations. The lesio...](#)

[Figure 25.4 \(a\) Thinly septated intraductal papillary mucinous neoplasm \(IPM...](#)

[Figure 25.5 \(a\) Pancreatic cystic endocrine tumor. Note the presence of the ...](#)

Chapter 26

[Figure 26.1 Reformatted computed tomography scan demonstrating a side-branch...](#)

[Figure 26.2 Magnetic resonance cholangiopancreatography demonstrating a side...](#)

[Figure 26.3 Linear endoscopic ultrasound image demonstrating a dilated main ...](#)

[Figure 26.4 Linear endoscopic ultrasound image revealing a small cystic lesi...](#)

[Figure 26.5 Linear endoscopic ultrasound image of a malignant-appearing 2.9-...](#)

[Figure 26.6 Fine needle aspiration of a malignant cystic mass.](#)

[Figure 26.7 International Association of Pancreatology \(IAP\) algorithm for m...](#)

Chapter 27

[Figure 27.1 Endoscopic ultrasound \(linear\) showing features of chronic pancr...](#)

[Figure 27.2 Endoscopic ultrasound showing a hyperechoic duct wall \(crossmark...](#)

Chapter 28

[Figure 28.1 \(a\) Cirrhosis. The cirrhotic liver is characterized by diffuse, ...](#)

[Figure 28.2 Fatty liver is described as diffuse or as foci of hyperechoic or...](#)

[Figure 28.3 Simple hepatic cyst can be seen here as an anechoic fluid-filled...](#)

[Figure 28.4 \(a, b\) Metastatic liver disease. Lesions found within the hepatic...](#)