

Guest-edited by
MARK MORRIS
AND MIKE ALING

WORLD MODELLING

ARCHITECTURAL MODELS
IN THE 21ST CENTURY



MARSHALL ISLANDS

- Majuro
- Butaritari
- Makin
- Abaiang
- Marakel
- MAIANA
- Kuria
- Abemama
- Ujae
- Arenuka
- Nonouti
- Beru
- Nikunau
- Tabiteuea
- Onotoa
- Tamana
- Arorae

PHOENIX ISLANDS

- McKean
- Kanton
- Enderbury
- Bimie
- Rawaki
- Nikumaroro
- Orono
- Manra

- Kingman Reef (U.S.)
- Palmyra Atoll (U.S.)

- Teraina
- Tabuaeran
- Kiritimati

LINE ISLANDS

- Malden
- Starbuck
- Vostok
- Flint

TUVALU

- Tokelau (N.Z.)

Rotuma FIJI

- Wallis and Futuna (FRANCE)

SAMOA

- American Samoa (U.S.)

Cook Islands (NEW ZEALAND)

VITI

FRENCH POLYNESIA

Equator

WORLD MODELLING

ARCHITECTURAL MODELS
IN THE 21ST CENTURY



About the Guest Editors

Mark Morris and Mike Aling

05

Introduction

Scaling Up

The Many Worlds of the Architectural Model

Mark Morris and Mike Aling

06

More on the Model

Building on the Ruins of Representation

Christian Hubert

14

Miniature Places for Vicarious Visits

Worldbuilding and Architectural Models

Mark JP Wolf

22

Polyphonic Dreams

Storytime in Synthetic Reality

Kate Davies

32

Studio Klarenbeek & Dros, Mycelium Chair, 2013

Worlds Without End

Mark Cousins

40



Remodelling

Home as Cosmos

Chad Randl

56

Handmade Worlds

Constructing an Inhabitable Modelscape

Pascal Bronner and Thomas Hillier

48

Dennis Maher, City Chancel, 2017

Everything You See is Yours

Step Towards the Certainty of Uncertainty

Theodore Spyropoulos

64

Model & Fragment

On the Performance of
Incomplete Architectures

Thea Brejzek and Lawrence Wallen

74

Models as Objects

The Installation as
Architectural Encounter

James A Craig
and Matt Ozga-Lawn

82

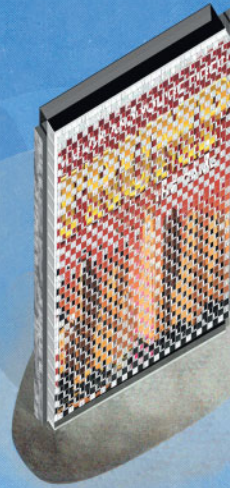
Sofia Belenky,
Null Island,
Intermediate 5 unit,
Architectural Association,
London,
2017

Zero Zero Ze(r)ro(r)

How the Cartographic Thirst
to Project the Real Reveals Spaces
for the Creation of New Worlds

Ryan Dillon

88



The White Cube in Virtual Reality

Kathy Battista

102

From Mimicry to Coupling

Some Differences,
Challenges and Opportunities
of Bio-Hybrid Architectures

Phil Ayres

96

Backgarden Worldbuilding

The Architecture
of the Model Village

Mike Aling

112

Paracosmic Project

The Architectural Long Game

Mark Morris

120

From Another Perspective

A Surrealist
Rococo Master
Kris Kuksi

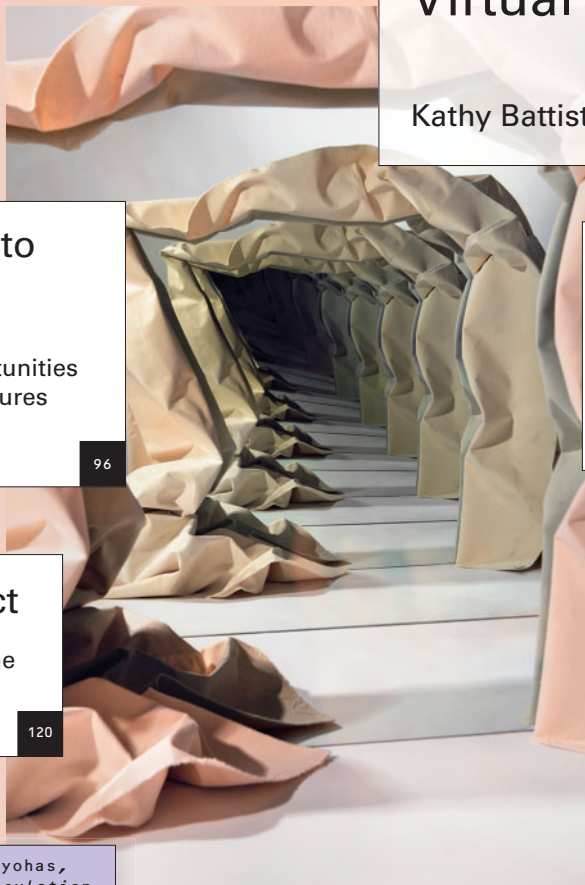
Neil Spiller

128

Sarah Meyohas,
Rope Speculation,
2015

Contributors

134



Editorial Offices

John Wiley & Sons
9600 Garsington Road
Oxford
OX4 2DQ

T +44 (0)1865 776 868

Editor

Neil Spiller

Managing Editor

Caroline Ellerby
Caroline Ellerby Publishing

Freelance Contributing Editor

Abigail Grater

Publisher

Todd Green

Art Direction + Design

CHK Design:
Christian Küsters
Barbara Nassisi

Production Editor

Elizabeth Gongde

Prepress

Artmedia, London

Printed in the United Kingdom
by Hobbs the Printers Ltd

Denise Bratton
Paul Brislin
Mark Burry
Helen Castle
Nigel Coates
Peter Cook
Kate Goodwin
Edwin Heathcote
Brian McGrath
Jayne Merkel
Peter Murray
Mark Robbins
Deborah Saunt
Patrik Schumacher
Ken Yeang


EDITORIAL BOARD

Front cover: Minimaforms
(Theodore and Stephen
Spyropoulos), *Of and
In The World*, London,
2017. Photo Theodore
Spyropoulos

Inside front cover: Ezgi
Terzioglu, *Crossing the
Line*, Intermediate Unit 5,
Architectural Association
(AA), London, 2018. ©
Architectural Association,
School of Architecture

Page 1: Stasus (James
A Craig and Matt Ozga-
Lawn), *Everest Death
Zone*, 2013. © Stasus
2009-16

03 / 2021

	ARCHITECTURAL DESIGN	
May/June	Profile No.	
2021	271	

Disclaimer

The Publisher and Editors cannot be held responsible for errors or any consequences arising from the use of information contained in this journal; the views and opinions expressed do not necessarily reflect those of the Publisher and Editors, neither does the publication of advertisements constitute any endorsement by the Publisher and Editors of the products advertised.

Journal Customer Services

For ordering information, claims and any enquiry concerning your journal subscription please go to www.wileycustomerhelp.com/ask or contact your nearest office.

Americas

E: cs-journals@wiley.com
T: +1 877 762 2974

Europe, Middle East and Africa

E: cs-journals@wiley.com
T: +44 (0)1865 778315

Asia Pacific

E: cs-journals@wiley.com
T: +65 6511 8000

Japan (for Japanese-speaking support)

E: cs-japan@wiley.com
T: +65 6511 8010

Visit our Online Customer Help available in 7 languages at www.wileycustomerhelp.com/ask

Print ISSN: 0003-8504

Online ISSN: 1554-2769

Prices are for six issues and include postage and handling charges. Individual-rate subscriptions must be paid by personal cheque or credit card. Individual-rate subscriptions may not be resold or used as library copies.

All prices are subject to change without notice.

Identification Statement

Periodicals Postage paid at Rahway, NJ 07065. Air freight and mailing in the USA by Mercury Media Processing, 1850 Elizabeth Avenue, Suite C, Rahway, NJ 07065, USA.

USA Postmaster

Please send address changes to *Architectural Design*, John Wiley & Sons Inc., c/o The Sheridan Press, PO Box 465, Hanover, PA 17331, USA

Rights and Permissions

Requests to the Publisher should be addressed to: Permissions Department John Wiley & Sons Ltd The Atrium Southern Gate Chichester West Sussex PO19 8SQ UK

F: +44 (0)1243 770 620

E: Permissions@wiley.com

All Rights Reserved. No part of this publication may be reproduced, stored in a retrieval system or transmitted in any form or by any means, electronic, mechanical, photocopying, recording, scanning or otherwise, except under the terms of the Copyright, Designs and Patents Act 1988 or under the terms of a licence issued by the Copyright Licensing Agency Ltd, 5th Floor, Shackleton House, Battle Bridge Lane, London SE1 2HX, without the permission in writing of the Publisher.

Subscribe to AD

AD is published bimonthly and is available to purchase on both a subscription basis and as individual volumes at the following prices.

Prices

Individual copies:
£29.99 / US\$45.00

Individual issues on

AD App for iPad:

£9.99 / US\$13.99

Mailing fees for print may apply

Annual Subscription Rates

Student: £93 / US\$147

print only

Personal: £146 / US\$229

print and iPad access

Institutional: £346 / US\$646

print or online

Institutional: £433 / US\$808

combined print and online

6-issue subscription on

AD App for iPad: £44.99 /

US\$64.99



ABOUT THE
GUEST-EDITORS

MARK MORRIS AND MIKE ALING

Mark Morris and Mike Aling have been discussing their shared fascination with architectural models, and their continued development in light of new media technologies, for a number of years. Both have looked to how modelling has evolved within architectural education and practice. This issue of Δ , conceived in a pub opposite a model village, is their first joint project on the subject.

Mark Morris is Head of Teaching at the Architectural Association (AA) in London where he lectures in history and theory. He chairs the AA's Teaching and Learning Committee and is a member of its Academic Board and Senior Management Team. He studied architecture at Ohio State University where he received the AIA Henry Adams medal, and completed his PhD at the University of London's Consortium doctoral programme supported by the RIBA Research Trust Award. He was previously Director of Graduate Studies in the Field of Architecture and, subsequently, Director of Exhibitions at Cornell University's College of Architecture, Art and Planning in Ithaca, New York. He is the author of *Models: Architecture and the Miniature* (Wiley, 2006) and *Automatic Architecture* (University of North Carolina, 2007), as well as chapters in many other books. His essays have also featured in *Domus*, *Log*, *Frieze*, Δ , *Cabinet*, the *Cornell Journal of Architecture* and *Critical Quarterly*. He is a member of the Victoria and Albert Museum's Architectural Models Network and RIBA Academic Publications Panel. His research focuses on questions of visual representation, architecture in fiction, and the study of paracosms as mental places for detailed creative work of long duration.



Mike Aling is a senior lecturer at the University of Greenwich School of Design in London, where he is the MArch Architecture programme leader. He runs Unit 14 at Greenwich, a postgraduate design group that explores new architectural modelling systems, processes and languages. In recent years Unit 14 has increasingly looked to worldbuilding as a methodology to propose architectural projects through the vehicle of models. His research examines and speculates on the continuing evolution of digital architectural modelling methodologies and procedures, and the consequences of this development on the histories and theories of the architectural model. He is fascinated by model villages and their affordances to architecture, and is currently undertaking a PhD at Newcastle University on this subject. His other ongoing research interests explore the history and potential future of the architectural book, and the role of architecture in wider printed and digital media design publishing frameworks. He has been published in a number of architectural books and journals, including Δ . His design work has been exhibited in the US, South Korea, Austria and London. Δ



Scaling Up

The Many Worlds of the Architectural Model

INTRODUCTION

MARK MORRIS AND MIKE ALING

Greg Lynn, *Satellite Worlds*, 'Other Space Odysseys: Greg Lynn, Michael Maltzan, Alessandro Poli', Canadian Centre for Architecture (CCA), Montreal, Quebec, 2010

Partly a recollection of the moon landing, partly a sci-fi design brief, Lynn's elliptical satellite worlds exhibited at the CCA are microcosms freed of earthly constraints, but also in dialogue with Earth.



The meaning of 'model' can range from the loftiest notions of paragons and ideals through to the practical operations of gluing cardboard into a 3D form, through to the most complex of digital constructions. The spectrum of what might constitute an architectural model continues to stretch and to be redefined. It is increasingly difficult to pigeonhole the architectural model as a singular object or method in the 21st century. With the ubiquity of building information modelling (BIM) in the profession, the processes of modelling and the construction of models are now arguably the dominant mode of production. We are reaching a point where every building is born a digital model, concretised in the phenomenal world over time like the slow setting of a cast. The advancement and availability of 3D-modelling software has also allowed designers to be ever more ambitious with their models, to the point where entire imagined and digitally constructed worlds can thrive. This issue of Δ does not attempt to clarify what an architectural model might be today; it aims to discuss a new shift that involves how the model sits in a world of its own making – as a 'worldmodel'.

Recent History

Writing on the architectural model had its 'boom' moment in the mid-2000s. These works often opened by clarifying their engagement with this most slippery of terms. In both Albert C Smith's *Architectural Model as Machine: A New View of Models from Antiquity to the Present Day* (2004)¹ and Karen Moon's *Modeling Messages: The Architect and the Model* (2005),² for example, the discussion is pinned firmly to the architect's physical model. Many of the writings were directly inspired by the preceding 'Idea as Model' exhibition of 1976; however, this exhibition took a decidedly different tack. The exhibition was curated by Peter Eisenman and presented physical model works from a large number of the US architectural vanguard of the time at the

Institute for Architecture and Urban Studies (IAUS) in New York, with the aim of promoting the architectural model as capable of more than communicating proposals to clients in miniaturised (and often simplified) form. These artefacts were intended to become works in their own right, beyond the representational, as 'conceptual models'. However, in the delayed exhibition publication of 1981, Christian Hubert declared that this intention was always flawed, and that the autonomy of the architectural model was an impossibility at the time due to its intractable relationship with the subject/proposal that it represents.³ The 'Idea as Model' project was a ready response to Arthur Drexler's 1975–6 'The Architecture of the École des Beaux-Arts' exhibition at the Museum of Modern Art (MoMA) in New York, which, naturally, glorified the drawing. Both shows contributed to postmodern architecture, the scrapper one punching well above its weight.

In the decades that followed, model interest swung towards establishing their provenance and preserving them as objects of study. Dean of the Center for Advanced Study in the Visual Arts (CASVA) of the National Gallery in Washington DC, Henry A Millon's exhibitions and catalogues on Renaissance and Baroque architecture from the mid-1990s included extensive scholarship around the few extant models from those eras. Tellingly, these works were published before the near-ubiquity of the digital model, perhaps to reassert the importance of the physical model in a time when it was evaporating into pixels. There were of course exceptions to the model-as-physical rule when writing on the model in the 2000s. In *The Model and its Architecture* (2008),⁴ for example, Patrick Healy opened up the term into its broadest sense, moving from Plato to Deleuze and back again. Today architects have come to accept 3D-printed and other digitally fabricated models as standard outputs, often forgetting their one-time novelty.



Greg Lynn,
New City,
'Other Space Odysseys:
Greg Lynn, Michael Maltzan,
Alessandro Poli',
Canadian Centre for
Architecture (CCA),
Montreal, Quebec,
2010

Model of one of a series of postulate megacities or small worlds that loop and coil around themselves. This particular world, a single continuous city, is populated through and mediated by social media. The model hovers above a mirror installed in the plinth below.

Worldbuilding and Worldmaking

Worldbuilding is the practice of constructing imaginary worlds. Long associated with fantasy epics and paraliteratures, the concept has burgeoned into a field that has also encompassed media studies, film and cinema, video games studies, urbanism, landscape and, of course, architecture. Mark JP Wolf has written extensively on the subject and is joining the debate in this issue. Otherwise known as 'subcreation' or 'conworlding' (constructed worlds), the success of these fabrications relies on their consistent upholding of self-instigated internal rules and logic systems. Architecture has a complex relationship with worldbuilding: architects often imagine a slightly newer version of our current world, while being intrinsically tied to its realities. It is this propensity to

imagine new world spaces not necessarily tied to the actual existing world that we increasingly see in the making of architectural models.

There is the danger that worldbuilding becomes a catch-all term for any imagined worldspace. And while there is no discernible difference between 'worldbuilding' and 'world-building', the term 'worldmaking', however, is distinct. Worldmaking is discussed in philosopher Nelson Goodman's *Ways of Worldmaking* (1978)⁵ as a form of treatise on how ideas affect the production of the world (in all of its guises, not solely the haptic and tactile). Architects arguably have a close association to Goodman's notion: they are in the business of producing design imaginaries that act as catalysts for change in our actual (but not necessarily phenomenal) world(s).

Denis Maher,
City Wall-scape,
 Fargo House,
 Buffalo, New York,
 2014

An interior of Dennis Maher's magnum opus, Fargo House. Maher purchased the abandoned house for \$10,000 in 2009. Rather than renovate, he interrogated what was left, reconfigured and exposed the structure, and in-filled certain gaps with his packrat collection of architectural toys. This room includes *City Wall-scape*, a melange of donated dolls' houses and scale models, something reminiscent of certain moments in Sir John Soane's house in London.



James Lawton,
The Gamification of Alt-Erlaa,
Vienna,
MArch Architecture,
Unit 14,
University of Greenwich
School of Design,
London,
2018

Student projects may signpost the way for the architectural model as a methodology for imagined new versions of the world, with physical models often increasing in size and scope, perhaps partly due to streamlined digital fabrication workflow. In this project, Vienna's social housing megalith Alt-Erlaa is reimagined in a world of ubiquitous social credit, becoming a playground where all mundane activities are gamified in order to increase the wellbeing of the inhabitants.



Isobel Eaton,
Hotel Hypnagogia,
MArch Architecture,
Unit 14,
University of Greenwich
School of Design,
London,
2019

Through the simple act of inviting us into the large immersive interior of the model (we enter by lying on our back and sliding in on a wheeled bed-board), the viewer inhabits an alternative world where we live in a state of hypnagogia, the space between wake and sleep. The hotel encourages occupants to delight in the experience of drifting off. With no assigned rooms, beds or set accommodation, guests are induced to sleep where they settle in a series of controlled communal environments – as is the viewer, who is invited to sleep in the comfort of the model.



Scales of Inquiry

This issue of Δ was largely written during the pandemic lockdown. Rather than that circumstance being a hindrance, it seemed to focus the minds of contributors and influence some thinking on worldmodelling. Christian Hubert (pp 14–21) explicitly makes this case, finding the timing of the development and thinking around worldmodels aligned to growing awareness around the fragile ecological state of the planet. Climate change, political turmoil and social upheaval prompt a turning towards worldmodelling as a coping mechanism, both as escapism and a speculative space for testing ways to heal the planet. Hubert puts his case in the context of his earlier observations of models asserted in his influential 'Ruins of Representation' essay featured in the 1981 *Idea as Model* catalogue.⁶ In that 40-year gap, Hubert finds a proliferation of worldmodel thinking.

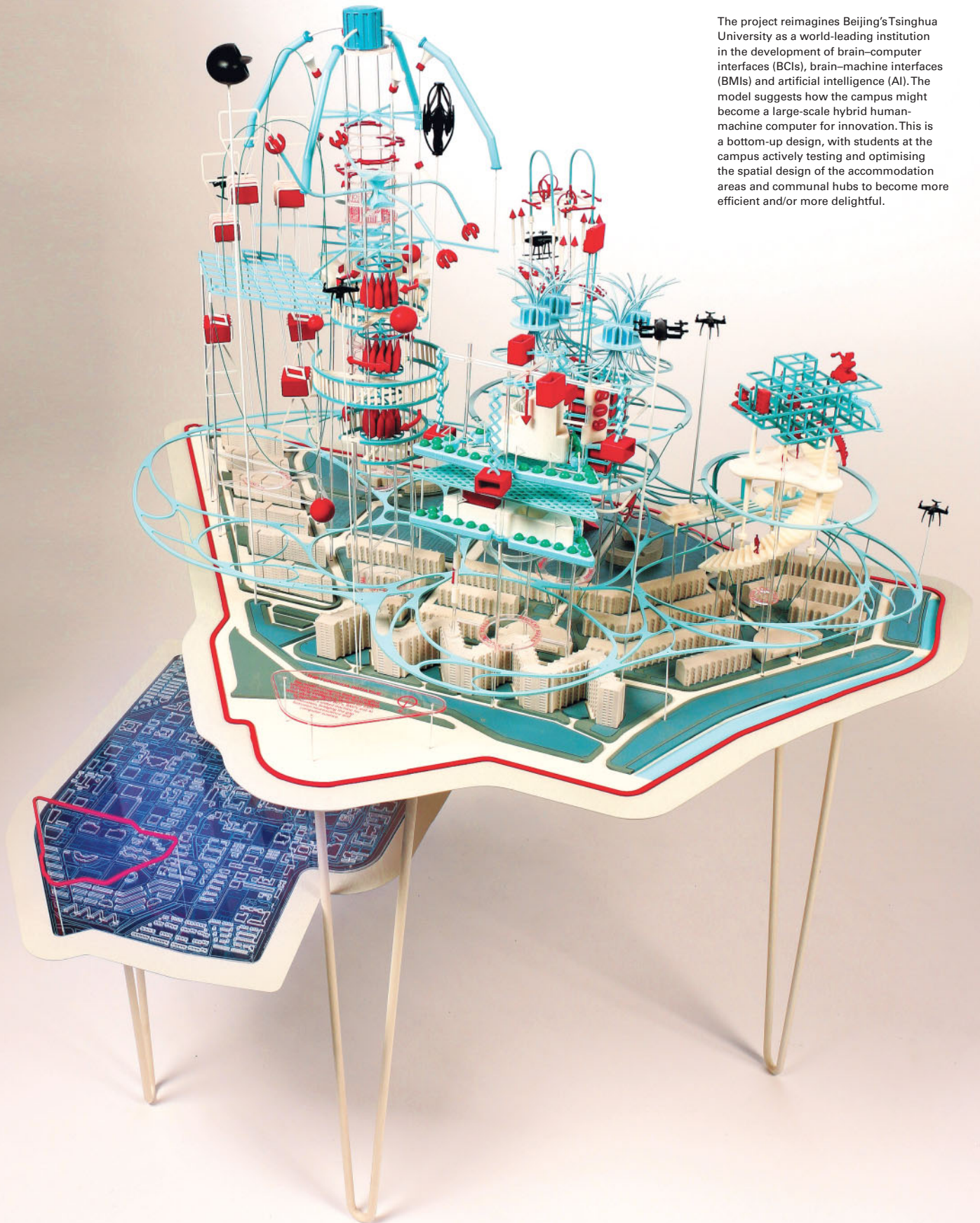
Mark JP Wolf is arguably the world's leading scholar on the subject of worldbuilding. In his article (pp 23–31) he returns to his earlier passion for architecture, and discusses the many ways in which the architectural model has, and continues to, operate as a worldbuilding device. The appeal of miniature architectures, both actual and virtual, is discussed in relation to his theories on worldbuilding.

Co-founder of Unknown Fields, Kate Davies looks to how worldmodels or slices thereof can be expressed in different media (pp 32–9). Film and video, she claims, are especially adept at communicating not just the look of alternative worlds, but their reason for being. Atmosphere, datascares, duration and narrative make such models seem alive.

In his last penned essay (pp 40–47), the late theorist Mark Cousins points out the telling differences between *a world* and *the world*, and the useful creative friction between the two. His unpacking of the terminology of worldmodelling brings out salient arguments and conceptual minefields. The endeavour reveals the tenebrous hold we have of any world, and how a world-as-construct is so easily deconstructed.

Rebecca Tudehope,
The Tsinghua Initiative,
MArch Architecture,
Unit 14,
University of Greenwich
School of Design,
London,
2019

The project reimagines Beijing's Tsinghua University as a world-leading institution in the development of brain-computer interfaces (BCIs), brain-machine interfaces (BMIs) and artificial intelligence (AI). The model suggests how the campus might become a large-scale hybrid human-machine computer for innovation. This is a bottom-up design, with students at the campus actively testing and optimising the spatial design of the accommodation areas and communal hubs to become more efficient and/or more delightful.



FleaFollyArchitects (pp 48–55) founded their practice with the agenda to explore the potential and limits of narrative-driven architectural models. For them, the model is the architecture, not solely a representational vehicle for a yet-to-be-realised proposal. They take us through a number of their more recent projects that increasingly blur the edges between modelling, installation and architecture.

Historian Chad Randl offers a very different approach to worldmodelling through his research on remodelling (pp 56–63). Every remodel, he contends, is another reality, an alternative world to what was before. Scale has little to do with this qualification of our home as a model of the world; a remodelled interior, a rearranged mantelpiece or shelf. He reminds us that all worldmodels are remodels, as they are all built over and include fragments of preceding ones.

Directing the Architectural Association Design Research Lab (AA DRL) in London, Theodore Spyropoulos considers a series of model investigations that move, sense, transform and amalgamate into architectures, cities, territories and worlds (pp 64–73). These are smart models of potential and agency, each a world unto itself, and each capable of spawning a world.

Following on from their monograph *The Model as Performance* (2018),⁷Thea Brejzek and Lawrence Wallen (pp 74–81) turn their attention to built scenography as both a model of a world and a model for a world. They observe that through deliberately unfinished architectural fragments, the process of worldbuilding has been intentionally interrupted, and these model fragments operate as a self-referential yet autonomous models that provoke discourse between object and viewer. James A Craig and Matt Ozga-Lawn, who co-run the architectural practice Stasus, discuss recent projects that utilise the nature of familiar objects and their deterritorialisation to create complex, performative and imaginative architectures through partial worldbuilding, inferred meaning and mixed-media narratives (pp 82–7).

Walking the line of the prime meridian, Ryan Dillon reveals that the most effective way to model the world is to map it first (pp 88–95). Trudging around Greenwich, London, he finds anomalies and discoveries around what, if anything, should be straightforward. As he reminds us, cartography is creative, and every map a worldmodel. One thinks of the complicated fictive maps of JRR Tolkien or George RR Martin, the latter literally becoming a world model in the famous opening sequence of the television adaptation 'Game of Thrones'.

Phil Ayres discusses his recent EU-funded research into bio-hybrid architectures and argues for the worldbuilding potential of 'coupling' architecture to novel biological systems (pp 96–101). Through this research we see new models emerging of architectures inspired by bacteria, mycelium and insect behaviours. And Art historian Kathy Battista showcases a number of contemporary artists that produce models (pp 102–11). She focuses on how virtual reality is an ideal speculative space, perhaps *the* medium for worldmodelling, that



Minimaforms (Theodore and Stephen Spyropoulos),
Emotive City,
2015

The project imagined a collective and adaptive intelligent system capable of constructing communities based on personal interactions and behaviours. A self-organising system or framework of smart spherical units, each merging infrastructure with inhabitation, could produce whole cities and worlds, but never as fixed assemblies. The extraordinary model reveals both the single architectural cell and one possible amalgamation of many.

opens up a number of architectural possibilities. She notes the accessibility, economy and open-endedness of VR works and, as Hubert also suggests, our increasing willingness to linger in the virtual.

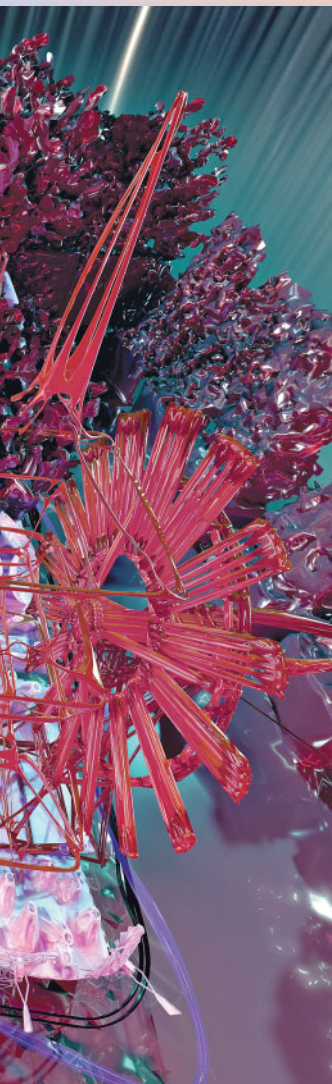
Flipping the Coin

As much as our roles as guest-editors of this Δ have been bound up to reaching out to others for their views and expertise on the subject of worldmodelling, much of the joy in this project was had in putting forward our own statements on the topic, for example in examining the history of the British model village (pp 112–19). Originally the invention of architect Charles Paget Wade at the turn of the 20th century, model villages have long fed into our cultural psyche, often bound up in the twee and retrograde. An ongoing model village project for Greenwich, London, is discussed in relation to how this seeming innocence might be misplaced, and how these peculiar enterprises of reactionary architectures, urbanisms and politics might signpost opportunities for how architectural models might function as worldbuilding exercises.

'Paracosmic Project' (pp 120–27) suggests how paracosms seem to answer some basic worldmodelling questions. Who is predisposed to think this way? Why is it useful to nurse a world in the mind's eye over a span of years, a lifetime? How is worldmodelling a genre of imaginative play and a basis for literary, artistic and scientific discovery? The paracosm tips in the psychoanalytic, the blurring of childhood and adult preoccupations, and questions whether such immersive and detailed thinking is not also obsessional and bound to some traumatic experience. The real pleasure found in paracosms is the interplay between fiction writing and crafting fictive worlds, between writing and designing, the storytelling through design as Kate Davies champions. Rather than being framed as a coping mechanism, paracosmic thinking could be considered a workspace in one's mind palace, a synthesis of observations marshalled to interrogate problems and suggest solutions?

There is a firm logic to using worldmodelling to cope and tinker with the world, to expand the scope of architectural endeavour





Mike Aling,
Greenwich for DLR Model Village,
Greenwich,
London,
2020

In the penultimate article in this issue, Mike Aling discusses his own model village project and suggests how eccentric British model villages have perhaps long held many of the clues as to how architectural models might be thought of as worldbuilding exercises.

Wutopia Lab,
Models in Model,
Shanghai,
China,
2019

below: Architecture office Wutopia Lab have recently completed the interior for China's first architectural model museum. As well as being a comprehensive collection of recent Chinese projects in physical model form, the collection is designed as a world of model proposals that together culminate into a vision of a future city named The Last Redoubt.



Worldmodelling

The illustrations in this issue point to the diversity of worldmodels – spanning practice, academia and fine art – as well as the permissiveness of the term. They offer a parallel analysis and suggest how scale is still an important aspect of modelling as an economy of making, but also as a conceptual aid. Even in the paradigm of digital modelling where the subject is assumed to be 1:1, thinking through scaling is still an important, and perhaps necessary, process. If small-scale models in general lend us apprehension more readily and intuitively than, say, plans or sections, the scale of models representing worlds only intensifies this sensibility. We combine two forms of scalar benefits: one suggested by Claude Lévi-Strauss, that 'By being quantitatively diminished, it seems to us qualitatively simplified. More exactly, the quantitative transposition extends and diversifies our power over a homologue of the thing, and by means of it the latter can be grasped, assessed and apprehended at a glance,'⁸ the other, more squarely, about things like world models, promised by Gaston Bachelard:

Such formulas as: being-in-the-world and world-being are too majestic for me and I do not succeed in experiencing them. In fact, I feel more at home in miniature worlds ... The cleverer I am at miniaturising the world, the better I possess it. But in doing this, it must be understood that the values become condensed and enriched in miniature. Platonic dialectics of large and small do not suffice for us to become cognizant of the dynamic virtues of miniature thinking. One must go beyond logic in order to experience what is large in what is small.⁹

Yet there is a firm logic to using worldmodelling to cope and tinker with the world, to expand the scope of architectural endeavour, to escape a world in trouble and hopefully return with some ways to rescue it. As Mark Cousins suggests in 'Worlds Without End' (pp 40–47), to work with *the* world, one must fashion for themselves a world away. For architecture, arguably models are increasingly proposing less about the object, and more about the objective. ▢

Notes

1. Albert C Smith, *Architectural Model as Machine: A New View of Models from Antiquity to the Present Day*, Architectural Press (Oxford), 2004.
2. Karen Moon, *Modeling Messages: The Architect and the Model*, Monacelli Press (New York), 2005.
3. Christian Hubert, 'The Ruins of Representation', in Kenneth Frampton and Silvia Kolbowski (eds), *Idea As Model: 22 Architects 1976/1980*, Rizzoli (New York), 1981, pp 17–27.
4. Patrick Healy, *The Model and its Architecture*, 010 Publishers (Rotterdam), 2008.
5. Nelson Goodman, *Ways of Worldmaking*, Hackett Publishing Company (Indianapolis, IN), 1978.
6. Hubert, *op cit*.
7. Thea Brejzek and Lawrence Wallen, *The Model as Performance: Staging Space in Theatre and Architecture*, Bloomsbury (London and New York), 2018.
8. Claude Lévi-Strauss, *The Savage Mind*, Weidenfeld & Nicolson (London), 1966, p 23.
9. Gaston Bachelard, *The Poetics of Space [La poétique de l'espace, 1958]*, trans Maria Jolas, Beacon Press (Boston, MA), 1994, pp 150, 161.

Text © 2021 John Wiley & Sons Ltd. Images: pp 6–7 © CCA; p 8 © Dennis Maher; p 9(t) © James Lawton. Image courtesy of Mike Aling; p 9(b) © Isobel Eaton. Image courtesy of Mike Aling; p 10 © Isobel Eaton. Image courtesy of Mike Aling; p 11 Photo Theodore Spyropoulos; pp 12–13(t) Image courtesy of Mike Aling; pp 12–13(b) Image courtesy of Wutopia Lab/CreatAR