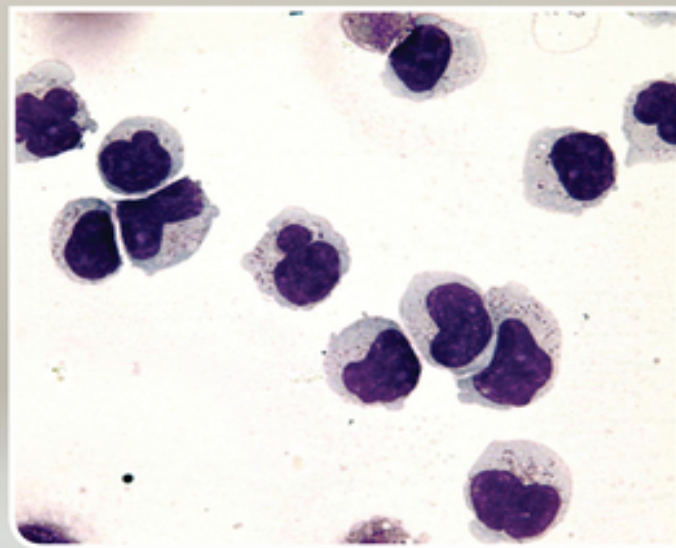
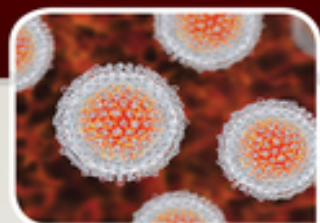


JEFFREY McCULLOUGH

TRANSFUSION MEDICINE

FIFTH EDITION



WILEY Blackwell

Table of Contents

[Cover](#)

[Title Page](#)

[Copyright Page](#)

[Contributors](#)

[Preface](#)

[1 History](#)

[1.1 Ancient times](#)

[1.2 The period 1500-1700](#)

[1.3 The 1800s](#)

[1.4 First transfusions in the United States](#)

[1.5 The discovery of blood groups](#)

[1.6 Anticoagulation](#)

[1.7 Modern blood banking and blood banks](#)

[1.8 Cadaver blood](#)

[1.9 The Rh blood group system and prevention of Rh immunization](#)

[1.10 Coombs and antiglobulin serum](#)

[1.11 Plasma and the blood program during World War II](#)

[1.12 Plastic bags and blood components](#)

[1.13 Cryoprecipitate and factor VIII](#)

[1.14 Red cell preservation](#)

[1.15 Leukocyte antigens and antibodies](#)

[1.16 Platelet collection, storage, and transfusion](#)

[1.17 Apheresis](#)

[1.18 Granulocyte transfusions](#)

1.19 Summary

References

2 The Blood Supply

2.1 Worldwide blood supply

2.2 Amount of blood collected

2.3 Management of the blood supply

2.4 Other activities of community blood centers

2.5 The plasma collection system

2.6 Nongovernmental blood bank organizations

2.7 World Health Organization

2.8 Federation of Red Cross and Red Crescent Societies

2.9 International Society for Blood Transfusion

2.10 Regulation of the blood supply system

References

3 Recruitment of Blood Donors

3.1 Demographic characteristics of blood donors

3.2 Motivation of whole blood donors

3.3 The donation experience and factors that influence continued donation

3.4 Whole blood donor recruitment strategies

3.5 Apheresis donor recruitment

3.6 Bone marrow donors

References

4 Blood Donor Medical Assessment, Collection, and Complications

4.1 Blood collection

4.2 Medical assessment of whole blood donors

4.3 Collection of whole blood

[4.4 Postdonation care and adverse reactions to blood donation](#)

[4.5 Therapeutic bleeding](#)

[4.6 Medical assessment of apheresis donors](#)

[4.7 Adverse reactions in apheresis donors](#)

[References](#)

[5 Preparation, Storage, and Characteristics of Whole Blood, Blood Components, and Plasma Derivatives](#)

[5.1 Whole blood preparation and storage](#)

[5.2 Preparation of blood components from whole blood](#)

[5.3 Cryoprecipitate](#)

[5.4 Platelet concentrates—whole blood](#)

[5.5 Granulocytes](#)

[5.6 Irradiation of blood components](#)

[5.7 Hematopoietic stem and progenitor cells](#)

[5.8 Plasma derivatives](#)

[5.9 Pathogen-inactivated blood components](#)

[5.10 Universal red cells](#)

[5.11 Blood substitutes](#)

[References](#)

[6 Production of Components by Apheresis](#)

[6.1 Apheresis instruments](#)

[6.2 Plateletpheresis](#)

[6.3 Erythrocytapheresis](#)

[6.4 Leukapheresis for the collection of granulocytes](#)

[6.5 Leukapheresis for the collection of mononuclear cells](#)

[6.6 Leukapheresis for the collection of peripheral blood stem cells](#)

[6.7 Donor selection and complications of cytapheresis in normal donors](#)

[6.8 Plasmapheresis and source plasma](#)

[References](#)

[7 Laboratory Testing of Donated Blood](#)

[7.1 Background](#)

[7.2 Safety of the blood supply](#)

[7.3 Blood component testing](#)

[7.4 Testing for transmissible diseases](#)

[7.5 Other laboratory testing](#)

[7.6 Summary](#)

[References](#)

[8 Blood Groups](#)

[8.1 Red blood cell antigens and groups](#)

[8.2 ABO system](#)

[8.3 The Rh system](#)

[8.4 Other red cell blood groups](#)

[8.5 Antibodies to red cell antigens](#)

[8.6 Function of molecules containing red cell antigens](#)

[8.7 Platelets](#)

[8.8 Granulocytes](#)

[References](#)

[9 Laboratory Detection of Blood Groups and Provision of Red Cells](#)

[9.1 Immunologic mechanisms of red cell destruction](#)

[9.2 Methods of detecting red cell antibody-antigen reactions](#)

[9.3 The antiglobulin test](#)

[9.4 Red cell compatibility testing](#)

[9.5 Red cell antibody identification](#)

[9.6 Strategies for making red cells available for transfusion](#)

[9.7 Approach to the patient with an incompatible crossmatch](#)

[9.8 Hemolytic disease of the fetus and newborn](#)

[9.9 Platelet compatibility](#)

[9.10 Granulocyte compatibility](#)

[References](#)

[10 Clinical Uses of Blood Components](#)

[10.1 Blood component therapy](#)

[10.2 Transfusion of components that contain red blood cells](#)

[10.3 Transfusion of components and derivatives that contain coagulation factors](#)

[10.4 Transfusion of platelets](#)

[10.5 Granulocyte transfusion](#)

[10.6 Cytomegalovirus-safe blood components](#)

[10.7 Graft-versus-host disease](#)

[References](#)

[11 Transfusion Therapy in Specific Clinical Situations](#)

[11.1 Acute blood loss and trauma](#)

[11.2 Cardiovascular surgery](#)

[11.3 Hematopoietic cell transplantation](#)

[11.4 Solid organ transplantation](#)

[11.5 Transfusion of patients with paroxysmal nocturnal hemoglobinuria](#)

[11.6 Neonates](#)

[11.7 Pediatric patients](#)

[11.8 Transfusion therapy in hemoglobinopathies](#)

[11.9 Hemophilia and von Willebrand disease](#)

[11.10 Autoimmune hemolytic anemia](#)

[11.11 Pregnant women](#)

[11.12 Acquired immune deficiency syndrome](#)

[11.13 Transfusing patients with IgA deficiency](#)

[11.14 Autoimmune thrombocytopenia](#)

[11.15 Neonatal alloimmune thrombocytopenia](#)

[11.16 Neonatal alloimmune neutropenia](#)

[11.17 Autoimmune neutropenia](#)

[11.18 Rare blood types](#)

[References](#)

[12 Patient Blood Management](#)

[12.1 Evidence-based guidelines for transfusion](#)

[12.2 Physician and health professional education program](#)

[12.3 Mechanism to monitor blood use and adherence to guidelines](#)

[12.4 Preoperative Anemia](#)

[12.5 Preoperative autologous blood donation](#)

[12.6 Acute normovolemic hemodilution](#)

[12.7 Intraoperative blood salvage](#)

[12.8 Postoperative blood salvage](#)

[12.9 Use of hemostatic agents to minimize transfusion](#)

[12.10 Limiting blood loss for laboratory testing](#)

[12.11 Directed-donor blood](#)

[12.12 Patient-specific donation](#)

[12.13 Minimal donor exposure programs](#)

[References](#)

[13 Pediatric Transfusion Medicine](#)

[13.1 Neonates](#)

[13.2 Pediatric patients](#)

[13.3 Modifications of blood products for neonates/children](#)

[13.4 Transfusion techniques in children and neonates](#)

[13.5 Special scenarios in pediatric transfusion medicine](#)

[References](#)

[14 Pathogen Reduced Blood Products](#)

[14.1 Pathogen Reduction Technologies](#)

[14.2 Toxicity of compounds used for pathogen inactivation](#)

[14.3 Immunologic effects](#)

[14.4 Factors that influence transmission of infection](#)

[14.5 Microbial killing capacity of pathogen reduction therapy technologies](#)

[14.6 Pathogen reduced blood products](#)

[14.7 Pathogen reduced platelet products](#)

[14.8 Red cells and whole blood](#)

[14.9 Conclusions from in vitro and animal and observational human studies](#)

14.10 Clinical trials of pathogen reduced components

References

15 Techniques of Blood Transfusion

15.1 Obtaining consent for transfusion

15.2 Venous access and the venipuncture

15.3 Transportation and storage of blood

15.4 Identification of the patient and blood component

15.5 Blood administration sets and filters

15.6 Infusion Devices

15.7 Infusion solutions

15.8 Starting the transfusion

15.9 Rate and duration of transfusion

15.10 Nursing care of patients receiving a transfusion

15.11 Transfusion techniques for neonates and infants

15.12 Transfusion of hematopoietic stem cell products

15.13 Transfusion in the nonhospital setting

References

16 Complications of Transfusion

16.1 Immunologic complications of transfusion resulting in transfusion reactions

16.2 Nonimmunologic hemolysis mimicking a transfusion reaction

16.3 Febrile nonhemolytic transfusion reactions

16.4 Allergic reactions

[16.5 Pulmonary reactions, acute lung injury, and transfusion-related acute lung injury](#)

[16.6 Anaphylactic reactions](#)

[16.7 Hypotensive reactions](#)

[16.8 Reactions to platelet transfusions](#)

[16.9 Reactions to granulocyte transfusions](#)

[16.10 Reactions due to bacterial contamination of blood components](#)

[16.11 Signs, symptoms, and management of a transfusion reaction](#)

[16.12 Immunologic complications of transfusion](#)

[16.13 Nonimmunologic complications of blood transfusion](#)

[16.14 Passive transfer of hypersensitivity](#)

[References](#)

[17 Transfusion-Transmitted Diseases](#)

[17.1 Syphilis](#)

[17.2 Hepatitis](#)

[17.3 HIV infection and AIDS](#)

[17.4 Other transfusion-transmitted viruses](#)

[17.5 Transfusion-transmitted bacterial infections](#)

[17.6 Transfusion-transmitted parasitic and tick-borne diseases](#)

[17.7 Other issues with transfusion-transmitted infections](#)

[17.8 Other diseases of interest](#)

[17.9 Introduction of new test](#)

[References](#)

[18 The HLA System in Transfusion Medicine and Transplantation](#)

[18.1 The HLA system](#)

[18.2 Clinical HLA testing for transplantation](#)

[18.3 The human minor histocompatibility antigens](#)

[18.4 The HLA system and transplantation](#)

[18.5 The HLA system in transfusion therapy](#)

[18.6 Conclusion and summary](#)

[References](#)

[19 Cellular Engineering](#)

[19.1 Hematopoietic progenitor and stem cells](#)

[19.2 General hematopoietic cellular engineering processes](#)

[19.3 Umbilical cord blood banking](#)

[19.4 Adoptive immunotherapy](#)

[19.5 Gene therapy for hereditary immune deficiencies and hemoglobin disorders](#)

[19.6 Immunotherapy for immune diseases](#)

[19.7 Mesenchymal stromal cells](#)

[19.8 Platelet-rich plasma](#)

[19.9 Regulation of cellular engineering](#)

[19.10 Quality assurance and good manufacturing practices for cellular engineering](#)

[References](#)

[20 Therapeutic Apheresis](#)

[20.1 Clinical uses of plasma exchange](#)

[20.2 Plasma exchange](#)

[20.3 Red cell exchange or erythrocytapheresis](#)

[20.4 Therapeutic cytapheresis](#)

[20.5 Photopheresis](#)

[20.6 Therapeutic apheresis using selective adsorption columns](#)

[References](#)

[21 Quality Programs in Blood Banking and Transfusion Medicine](#)

[21.1 Quality improvement systems and high reliability](#)

[21.2 Quality assurance in the blood supply system](#)

[21.3 Errors in transfusion medicine](#)

[21.4 Quality assurance in transfusion therapy](#)

[21.5 Summary](#)

[References](#)

[Index](#)

[End User License Agreement](#)

List of Tables

Chapter 2

[Table 2.1 Key elements of a nationally coordinated blood transfusion service.](#)

[Table 2.2 Activities related to blood availability and safety in different co...](#)

Chapter 4

[Table 4.1 Strategies for collecting safe blood.](#)

[Table 4.2 Complete list of medical history questions for blood donors.](#)

[Table 4.3 General procedure: donor arm preparation for blood collection.](#)

[Table 4.4 Adverse reactions to whole blood donation.](#)

[Table 4.5 Potential complications and adverse reactions to cytappheresis donat...](#)

Chapter 5

[Table 5.1 Some advantages and disadvantages of whole blood versus blood compo...](#)

[Table 5.2 Components produced by blood banks and the medical use of these com...](#)

[Table 5.3 Some of the products manufactured from whole blood subject to licen...](#)

[Table 5.4 Content of anticoagulant-preservative solutions \(mg in 63 mL\).](#)

[Table 5.5 Content of additive solutions.](#)

[Table 5.6 Characteristics of red cells in AS-1 \(Adsol\) for 42 days of storage...](#)

[Table 5.7 Changes that occur during red cell storage: the storage lesion.](#)

[Table 5.8 Established or potential adverse effects of leukocytes in blood com...](#)

[Table 5.9 Platelet additive solution component concentration \(mM\).](#)

[Table 5.10 Plasma-derivative products.](#)

[Table 5.11 Coagulation factor and inhibitor levels in 12 lots of Octaplas.](#)

Chapter 6

[Table 6.1 Instruments available in the United States for collection of blood ...](#)

[Table 6.2 Comparison of red cell units prepared from whole blood with red cel...](#)

[Table 6.3 Effects of 10 µg/kg G-CSF dose on the quantity of cells collected b...](#)

[Table 6.4 Quantity of cells in the PBSC components.](#)

Chapter 7

[Table 7.1 Tests of donor blood performed in the United States.](#)

[Table 7.2 Automated systems for red cell typing and antibody testing of donat...](#)

[Table 7.3 Common causes of ABO typing discrepancies.](#)

[Table 7.4 Automated systems for infectious disease testing of donated blood.](#)

[Table 7.5 Sequence of testing of donated blood.](#)

Chapter 8

[Table 8.1 Major red blood cell group systems containing 230 antigen specifici...](#)

[Table 8.2 Molecular and biochemical characteristics of the International Soci...](#)

[Table 8.3 A₁A₂BO phenotype, gene, and genotype frequencies in southern Englan...](#)

[Table 8.4 Genes and antigens of the ABH system and ABO type of donor red cell...](#)

[Table 8.5 Serologic reactions and the Weiner and Fisher-Race nomenclature for...](#)

[Table 8.6 General laboratory reactions of some blood group antibodies.](#)

[Table 8.7 Methods of characterizing red cell antibodies.](#)

[Table 8.8 Rare blood types associated with abnormal morphology or disease.](#)

[Table 8.9 Clinical conditions with red cell antigen alteration.](#)

[Table 8.10 Functions of molecules that contain red cell blood group antigens.](#)

[Table 8.11 Human platelet allo-antigens.](#)

[Table 8.12 Clinical situations involving platelet-specific antigens and antib...](#)

[Table 8.13 Granulocyte alloantigens.](#)

[Table 8.14 Clinical situations involving granulocyte-specific antigens and an...](#)

Chapter 9

[Table 9.1 Situations in which the direct antiglobulin test may be positive.](#)

[Table 9.2 Key steps in compatibility testing.](#)

[Table 9.3 Situations in which hemolysis can occur when the antibody screening...](#)

[Table 9.4 Indications for repeat identification of red cell antibodies.](#)

[Table 9.5 ABO antigens, antibodies, and donors suitable for transfusion to pa...](#)

[Table 9.6 Strategy for providing blood.](#)

[Table 9.7 Approximate time required to provide compatible red blood cells in ...](#)

[Table 9.8 Steps in the evaluation of potential hemolytic disease of the fetus...](#)

Chapter 10

[Table 10.1 Physiologic responses to anemia.](#)

[Table 10.2 Aspects of bloodless medicine program.](#)

[Table 10.3 Clinical situations involving leukocyte or platelet antibodies.](#)

[Table 10.4 Clinical situations in which leukodepleted red cells are recommend...](#)

[Table 10.5 Composition of fibrin sealant.](#)

[Table 10.6 Indications for fibrin sealants.](#)

[Table 10.7 Situations in which platelet transfusion may be necessary.](#)

[Table 10.8 Platelet transfusion: a clinical practice guideline from the AABB](#)

[Table 10.9 Patient-related factors associated with reduced response to platel...](#)

[Table 10.10 Practical strategies for dealing with a platelet refractory patie...](#)

[Table 10.11 Quick reference of potent immunosuppressive medications \(generic ...](#)

Chapter 11

[Table 11.1 Reaction to acute blood loss of increasing severity.](#)

[Table 11.2 Mechanisms to maintain oxygenation of the brain and heart during a...](#)

[Table 11.3 Comparison of crystalloid and colloid solutions.](#)

[Table 11.4 Factors to consider in changing blood types in acutely bleeding pa...](#)

[Table 11.5 Definitions of massive transfusions.](#)

[Table 11.6 Potential transfusion complications.](#)

[Table 11.7 Changes in RBC units during storage \[9\].](#)

[Table 11.8 Potential consequences of rapid red blood cell transfusion.](#)

[Table 11.9 Definition of parameters.](#)

[Table 11.10 Blood component utilization by patients undergoing bone marrow tr...](#)

[Table 11.11 Theoretical immunohematologic consequences of ABO-incompatible bo...](#)

[Table 11.12 Potential complications of exchange transfusion.](#)

[Table 11.13 General indications for transfusion in sickle cell anemia.](#)

[Table 11.14 Autoimmune hemolytic anemia.](#)

Chapter 12

[Table 12.1 Key elements of a patient blood management program?](#)

[Table 12.2 Blood management considerations for cardiovascular surgery patient...](#)

[Table 12.3 Autologous blood collection techniques in selected surgical proced...](#)

[Table 12.4 Cardiovascular conditions proposed as contraindications to autolog...](#)

[Table 12.5 Complications unique to autologous transfusion.](#)

[Table 12.6 Theoretical advantages of acute normovolemic hemodilution.](#)

[Table 12.7 Criteria for acute normovolemic hemodilution.](#)

[Table 12.8 Intraoperative salvage devices.](#)

Chapter 13

[Table 13.1 Guidelines for transfusion of red blood cells in patients <4 month...](#)

[Table 13.2 Potential complications of exchange transfusion.](#)

[Table 13.3 Red blood cell requirements for intrauterine transfusion.](#)

[Table 13.4 Steps in the evaluation of potential hemolytic disease of the newb...](#)

Chapter 14

[Table 14.1 Ideal features of a pathogen technology.](#)

[Table 14.2 Pathogen reduction for different blood products.](#)

[Table 14.3 The reasons for failure for a virus to transmit infection.](#)

[Table 14.4 Characteristics of viruses that affect infectivity.](#)

[Table 14.5 Randomized controlled clinical trials of pathogen reduced platelet...](#)

Chapter 15

[Table 15.1 Acceptable blood component storage and transport temperatures.](#)

[Table 15.2 Premedications to prevent potential transfusion reactions.](#)

Chapter 16

[Table 16.1 Complications of transfusion.](#)

[Table 16.2 Adverse effects of leukocytes in blood components.](#)

[Table 16.3 Transfusion-related fatalities by complication, FY2013 through FY2...](#)

[Table 16.4 Causes of red cell hemolysis associated with red cell transfusions...](#)

[Table 16.5 Laboratory test abnormalities in patients experiencing a hemolytic...](#)

[Table 16.6 Recommended criteria for TRALI and possible TRALI.](#)

[Table 16.7 Strategies to prevent transfusion-associated sepsis for all blood ...](#)

[Table 16.8 US Food and Drug Administration guidance to further prevent transf...](#)

[Table 16.9 Signs and symptoms of a hemolytic transfusion reaction.](#)

[Table 16.10 Symptoms related to different transfusion reactions.](#)

[Table 16.11 Steps to take when a transfusion reaction occurs.](#)

[Table 16.12 Kinds of clinical problems caused by immunization after blood tra...](#)

[Table 16.13 Clinical and pathologic comparison of graft-versus-host disease a...](#)

[Table 16.14 Transfusion-associated circulatory overload criteria.](#)

Chapter 17

[Table 17.1 General strategies to reduce disease transmission.](#)

[Table 17.2 Blood bank procedures to reduce the infectivity of the blood suppl...](#)

[Table 17.3 Estimates of transfusion-transmitted disease in the United States.](#)

[Table 17.4 Factors that could influence the infectivity of a transfusion.](#)

[Table 17.5 Other transfusion-transmitted diseases of interest.](#)

[Table 17.6 Issues in considering new transfusion-transmissible disease screen...](#)

Chapter 18

[Table 18.1 Numbers of recognized private HLA antigen specificities and allele...](#)

Chapter 19

[Table 19.1 Clinical uses of engineered cells.](#)

[Table 19.2 Types of hematopoietic stem and progenitor cells used as source ma...](#)

[Table 19.3 Approximate composition of hematopoietic stem cell products after ...](#)

[Table 19.4 Issues to be considered in developing cord blood banks.](#)

Chapter 20

[Table 20.1 Types of therapeutic apheresis procedures.](#)

[Table 20.2 Type of disease in which therapeutic plasma exchange may be used.](#)

[Table 20.3 Type of material being removed by plasma exchange.](#)

[Table 20.4 Indication categories for therapeutic apheresis.](#)

[Table 20.5 American Society for Apheresis 2019 indications category and grade...](#)

[Table 20.6 Therapeutic apheresis devices available in the United States.](#)

[Table 20.7 Comparison of changes induced by plasma exchange of 1.0-1.5 plasma...](#)

[Table 20.8 Complications of plasma exchange.](#)

[Table 20.9 Therapeutic applications of photopheresis.](#)

Chapter 21

[Table 21.1 Differences between blood component production and pharmaceutical ...](#)

[Table 21.2 Process analysis and management.](#)

[Table 21.3 Quality principles according to the AABB.](#)

[Table 21.4 Good Manufacturing Practices.](#)

[Table 21.5 International Organization for Standardization 9000 quality system...](#)

[Table 21.6 The quality hierarchy.](#)

[Table 21.7 Activities of a hospital blood bank that are subject to quality pr...](#)

[Table 21.8 Activities in the transfusion of blood and components that are par...](#)

[Table 21.9 Quality in transfusion therapy.](#)

List of Illustrations

Chapter 2

[Figure 2.1 US allogeneic white blood/red blood cell collections and transfus...](#)

[Figure 2.2 Red blood cell use by hospital service in 2013. BMT, bone marrow ...](#)

Chapter 5

[Figure 5.1 Diagram showing unit of whole blood and integral plastic bag syst...](#)

[Figure 5.2 Diagrammatic illustration of the separation of whole blood into r...](#)

[Figure 5.3 Comparison of platelet-rich plasma \(PRP\) and buffy coat \(BC\) meth...](#)

Chapter 6

[Figure 6.1 Flow pathway and blood separation of the Fresenius Kabi Amicus Se...](#)

[Figure 6.2 Flow pathway and blood separation in the Haemonetics Latham bowl ...](#)

[Figure 6.3 CD34+ cell yield in peripheral blood concentrates collected from ...](#)

Chapter 8

[Figure 8.1 Schematic diagram of the site of action of ABH genes. Fuc, fucose...](#)

[Figure 8.2 Models for insertion of red blood cell \(RBC\) membrane proteins. T...](#)

Chapter 9

[Figure 9.1 Schematic illustration of crossmatch using anti-human globulin....](#)

[Figure 9.2 Example of a panel of reagent red cells used for antibody identif...](#)

Chapter 10

[Figure 10.1 Standard oxygen hemoglobin and equation-derived curves. At PO₂ v...](#)

[Figure 10.2 Coagulation factor levels in relation to hemostases and coagulat...](#)

[Figure 10.3 The prothrombin time \(PT\) graphed against time for all study inf...](#)

[Figure 10.4 The relationship between stool blood loss and the platelet count...](#)

[Figure 10.5 Days with bleeding of grade 2 or higher in all three treatment g...](#)

[Figure 10.6 Inverse relation of bleeding time to circulating platelet count ...](#)

[Figure 10.7 Platelet increments in alloimmunized thrombocytopenic patients 1...](#)

Chapter 11

[Figure 11.1 The signature thromboelastograph tracing is shown with parameter...](#)

[Figure 11.2 Recommended ABO type of blood components for use in ABO-incompat...](#)

Chapter 16

[Figure 16.1 Cumulative date for serious hazards of transfusion categories 19...](#)

[Figure 16.2 Time relationship of pigmentary changes in serum following hemol...](#)

Chapter 17

[Figure 17.1 Likelihood of infectivity of donor blood with different levels o...](#)

[Figure 17.2 Serologic and biochemical events in acute hepatitis B.](#)

[Figure 17.3 Serologic and biochemical events in chronic hepatitis B/hepatiti...](#)

[Figure 17.4 Impact of different donor screening procedures on the estimated ...](#)

Chapter 18

[Figure 18.1 The human leukocyte antigen \(HLA\) region map located in the shor...](#)

[Figure 18.2 Mendelian inheritance of human leukocyte antigen \(HLA\) haplotype...](#)

[Figure 18.3 Schematic diagram of human leukocyte antigen \(HLA\) class I and c...](#)

[Figure 18.4 Schematic representation of the structure of HLA-A2 molecule. \(a...](#)

[Figure 18.5 Human leukocyte antigen allele nomenclature with four fields and...](#)

Chapter 20

[Figure 20.1 Category and recommendation distribution in the 2019 Special Iss...](#)

[Figure 20.2 Relationship between volume of plasma exchanged and proportion o...](#)

[Figure 20.3 Normalization of fibrinogen level and activated partial thrombop...](#)

Transfusion Medicine

FIFTH EDITION

Edited by

Jeffrey McCullough
University of Minnesota
Minneapolis, MN, USA

WILEY Blackwell

This edition first published 2021
© 2021 John Wiley & Sons Ltd

Edition History

Third edition published 2011; fourth edition published 2016 by John Wiley & Sons.

All rights reserved. No part of this publication may be reproduced, stored in a retrieval system, or transmitted, in any form or by any means, electronic, mechanical, photocopying, recording or otherwise, except as permitted by law. Advice on how to obtain permission to reuse material from this title is available at <http://www.wiley.com/go/permissions>.

The right of Jeffrey McCullough to be identified as the author of the editorial material in this work has been asserted in accordance with law.

Registered Office(s)

John Wiley & Sons, Inc., 111 River Street, Hoboken, NJ 07030, USA
John Wiley & Sons Ltd, The Atrium, Southern Gate, Chichester, West Sussex, PO19 8SQ, UK

Editorial Office

9600 Garsington Road, Oxford, OX4 2DQ, UK

For details of our global editorial offices, customer services, and more information about Wiley products visit us at www.wiley.com.

Wiley also publishes its books in a variety of electronic formats and by print-on-demand. Some content that appears in standard print versions of this book may not be available in other formats.

Limit of Liability/Disclaimer of Warranty

The contents of this work are intended to further general scientific research, understanding, and discussion only and are not intended and should not be relied upon as recommending or promoting scientific method, diagnosis, or treatment by physicians for any particular patient. In view of ongoing research, equipment modifications, changes in governmental regulations, and the constant flow of information relating to the use of medicines, equipment, and devices, the reader is urged to review and evaluate the information provided in the package insert or instructions for each medicine, equipment, or device for, among other things, any changes in the instructions or indication of usage and for added warnings and precautions. While the publisher and authors have used their best efforts in preparing this work, they make no representations or warranties with respect to the accuracy or completeness of the contents of this work and specifically disclaim all warranties, including without limitation any implied warranties of merchantability or fitness for a particular purpose. No warranty may be created or extended by sales representatives, written sales materials or promotional statements for this work. The fact that an organization, website, or product is referred to in this work as a citation and/or potential source of further information does not mean that the publisher and authors endorse the information or services the organization, website, or product may provide or recommendations it may make. This work is sold with

the understanding that the publisher is not engaged in rendering professional services. The advice and strategies contained herein may not be suitable for your situation. You should consult with a specialist where appropriate. Further, readers should be aware that websites listed in this work may have changed or disappeared between when this work was written and when it is read. Neither the publisher nor authors shall be liable for any loss of profit or any other commercial damages, including but not limited to special, incidental, consequential, or other damages.

Library of Congress Cataloging-in-Publication Data

Names: McCullough, Jeffrey, 1938- editor. | McCullough, Jeffrey, 1938- Transfusion medicine.

Title: Transfusion medicine / edited by Jeffrey McCullough.

Other titles: Transfusion medicine (McCullough)

Description: Fifth edition. | Hoboken, NJ : Wiley-Blackwell, 2021. | Preceded by Transfusion medicine / Jeffrey McCullough. 4th edition. 2017. | Includes bibliographical references and index.

Identifiers: LCCN 2020053116 (print) | LCCN 2020053117 (ebook) | ISBN 9781119599531 (paperback) | ISBN 9781119599555 (adobe pdf) | ISBN 9781119599562 (epub)

Subjects: MESH: Blood Transfusion | Blood Banks--organization & administration | Blood Donors | Blood Group Antigens

Classification: LCC RM171 (print) | LCC RM171 (ebook) | NLM WB 356 | DDC 615.3/9-dc23

LC record available at <https://lcn.loc.gov/2020053116>

LC ebook record available at <https://lcn.loc.gov/2020053117>

Cover image: [Production Editor to insert]

Cover design by [Production Editor to insert]

Contributors

Gary Bachowski, MD, PhD

American Red Cross Blood Services
St. Paul, MN, USA

Isabelle Blais-Normandin, MD

CHU de Québec - Université Laval
Department of Medicine, Hematology Division
Montreal, Quebec, Canada

S. Yoon Choo, MD

Departments of Pathology
Molecular and Cell Based Medicine
Icahn School of Medicine at Mount Sinai
New York, NY, USA

Randal Covin, MD

Pacific Northwest Region
American Red Cross
Portland, OR, USA

Thomas Gniadek, MD, PhD

Northshore University HealthSystem
Evanston, IL, USA

Sarah J. Ilstrup, MD

Transfusion Medicine Work Group and Front End Work
Group for Intermountain
Healthcare Pathology and Laboratory Medicine
Salt Lake City, UT, USA

Alesia Kaplan, MD

Department of Pathology
Division of Transfusion Medicine
University of Pittsburgh
Pittsburgh, PA, USA

Stephanie Kinney, MD

Cincinnati Children's Hospital Medical Center
Cincinnati, OH, USA

Ulrike F. Koenigbauer, Dr. med.

Bavarian Red Cross Blood Service
Nuremberg, Germany

Scott Koepsell, MD

University of Nebraska Medical Center
Omaha, NE, USA

Vincent Laroche, MD

CHU de Québec - Université Laval
Department of Medicine, Hematology Division
Montreal, Quebec, Canada

Kristin M. Mascotti, MD, MS-HQSM

NCH Health System
Naples, FL, USA

Jeffrey McCullough

University of Minnesota
Minneapolis, MN, USA

David H. McKenna, MD

Department of Laboratory Medicine and Pathology
Molecular & Cellular Therapeutics
University of Minnesota
Minneapolis/Saint Paul, MN, USA

Ramkrishna L. Reddy, MD

American Red Cross Blood Services, West Division
Omaha, NE, USA

David F. Stroncek, MD

Center for Cellular Engineering
Department of Transfusion Medicine
National Institutes of Health Clinical Center
Bethesda, MD, USA

James Stubbs, MD

Transfusion Medicine
Mayo Clinic
Rochester, MN, USA

Nancy Van Buren, MD

Innovative Blood Resources
Division of New York Blood Center
St. Paul, MN, USA

Thomas Watkins, DO, PhD

MEDIC Regional Blood Center
Knoxville, TN, USA