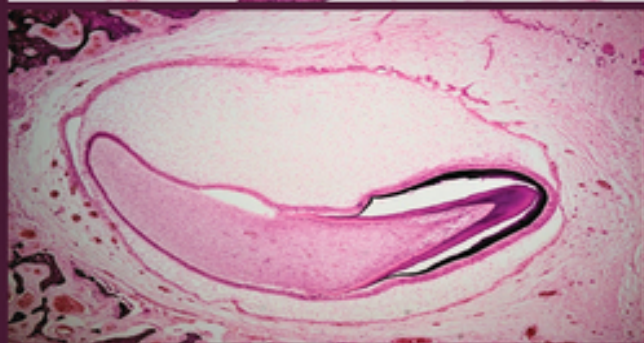
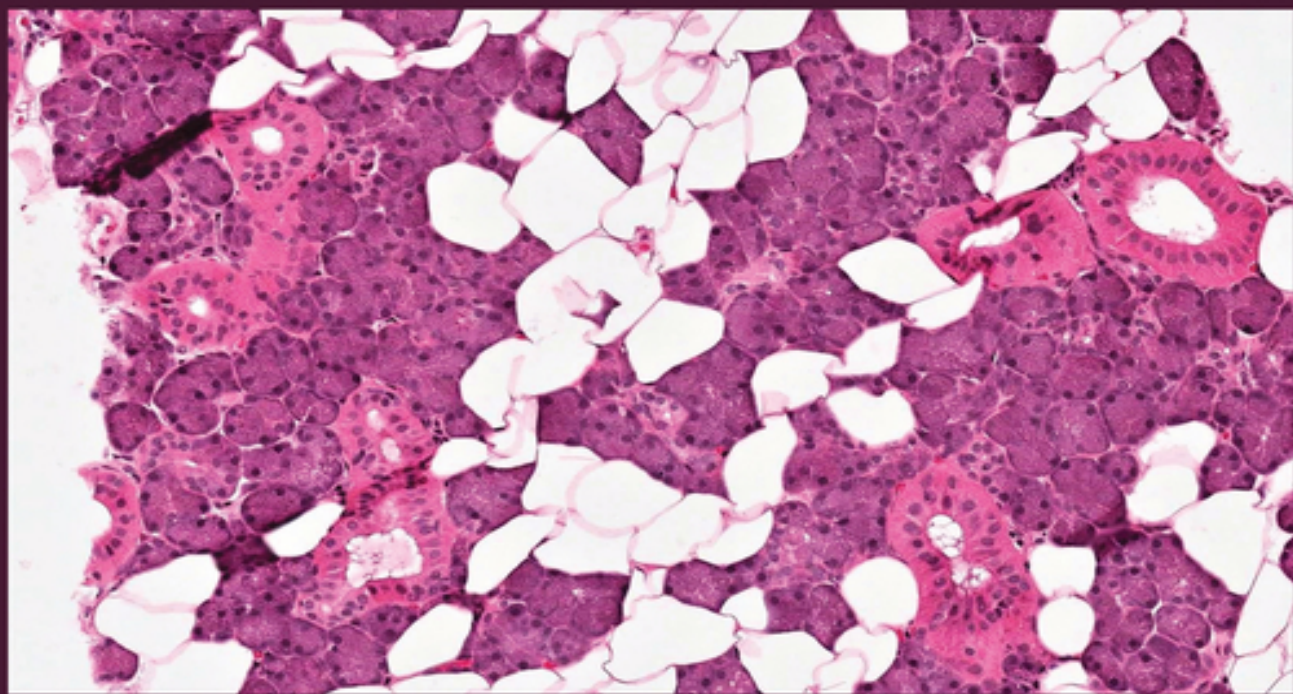


An Illustrated Guide to Oral Histology

Edited by

Imran Farooq • Saqib Ali • Paul Anderson



WILEY Blackwell

Table of Contents

[Cover](#)

[Title Page](#)

[Copyright Page](#)

[Preface](#)

[Sample Preparation](#)

[Hematoxylin and Eosin \(H and E\) Stained Sections](#)

[Micro-computed Tomography \(Micro-CT\)](#)

[Ground Sections](#)

[Scanning Electron Microscopy](#)

[About the Editors](#)

[List of Contributors](#)

[About the Companion Website](#)

[1 Tooth Development](#)

[1.1 Bud Stage](#)

[1.2 Cap Stage](#)

[1.3 Early Bell Stage](#)

[1.4 Late Bell Stage](#)

[1.5 Root Formation](#)

[1.6 Amelogenesis Imperfecta \(AI\)](#)

[1.7 Dentinogenesis Imperfecta \(DI\)](#)

[1.8 Dentin Dysplasia \(DD\)](#)

[References](#)

[2 Dental Enamel](#)

[2.1 Surface Enamel and Ionic Substitution](#)

[2.2 Enamel Striae](#)

[2.3 Enamel Lamellae](#)
[2.4 Enamel Spindles](#)
[2.5 Enamel Tufts](#)
[2.6 Enamel Dentin Junction \(EDJ\)](#)
[2.7 Neonatal Line](#)
[2.8 Gnarled Enamel](#)
[2.9 Enamel Caries](#)
[References](#)

[3 Dentin](#)

[3.1 Dentinal Tubules](#)
[3.2 Organic Matrix of Dentin](#)
[3.3 Primary and Secondary Curvatures of Tubules](#)
[3.4 Interglobular Dentin](#)
[3.5 Peritubular/Intratubular and Intertubular Dentin](#)
[3.6 Dead Tracts](#)
[3.7 Tertiary Dentin](#)
[3.8 Sclerotic Dentin](#)
[3.9 Tome's Granular Layer \(TGL\)](#)
[3.10 Dentin Caries](#)
[References](#)

[4 Cementum](#)

[4.1 Acellular Cementum](#)
[4.2 Cellular Cementum](#)
[4.3 Cementocytes and Lacunae](#)
[4.4 Cementoenamel Junction \(CEJ\)](#)
[4.5 Hypercementosis](#)
[4.6 Cementoblastoma](#)

[4.7 Root Resorption](#)

[References](#)

[5 Dental Pulp](#)

[5.1 Odontogenic Zone](#)

[5.2 Cell-Free Zone of Weil](#)

[5.3 Cell-Rich Zone](#)

[5.4 Pulp Core](#)

[5.5 Pulpal Fibrosis](#)

[5.6 Pulp Stones](#)

[5.7 Periapical Granuloma](#)

[References](#)

[6 Periodontal Ligament](#)

[6.1 Gingival Fibers](#)

[6.2 Transseptal Fibers](#)

[6.3 Alveolar Crest Fibers](#)

[6.4 Horizontal Fibers](#)

[6.5 Oblique Fibers](#)

[6.6 Apical Fibers](#)

[6.7 Interradicular Fibers](#)

[6.8 Gingivitis](#)

[6.9 Periodontitis](#)

[References](#)

[7 Alveolar Bone](#)

[7.1 Compact Bone](#)

[7.2 Circumferential Lamellae](#)

[7.3 Concentric Lamellae](#)

[7.4 Interstitial Lamellae](#)

[7.5 Osteocytes and Lacunae](#)

[7.6 Haversian Canals](#)

[7.7 Volkmann's Canals](#)

[7.8 Osteons](#)

[7.9 Spongy Bone](#)

[7.10 Marrow Spaces](#)

[7.11 Osteoporosis](#)

[7.12 Osteomyelitis](#)

[7.13 Osteoma](#)

[7.14 Osteitis Deformans \(Paget's Disease\)](#)

[7.15 Osteosarcoma](#)

[References](#)

[8 Oral Mucosa](#)

[8.1 Fungiform Papillae](#)

[8.2 Filiform Papillae](#)

[8.3 Circumvallate Papilla](#)

[8.4 Taste Buds](#)

[8.5 Keratinized Oral Epithelium](#)

[8.6 Parakeratinized Oral Epithelium](#)

[8.7 Non-Keratinized Oral Epithelium](#)

[8.8 Non-Specific Ulcer](#)

[8.9 Oral Lichen Planus](#)

[8.10 Pemphigoid](#)

[8.11 Lipoma](#)

[8.12 Oral Epithelial Dysplasia](#)

[8.13 Oral Melanoma](#)

[References](#)

[9 Salivary Glands](#)

[9.1 Serous Salivary Gland](#)

[9.2 Mucous Salivary Gland](#)

[9.3 Seromucous \(Mixed\) Salivary Gland](#)

[9.4 Intercalated Ducts](#)

[9.5 Striated Ducts](#)

[9.6 Excretory Ducts](#)

[9.7 Sialadenitis](#)

[9.8 Necrotizing Sialometaplasia](#)

[9.9 Pleomorphic Adenoma](#)

[9.10 Warthin Tumor](#)

[References](#)

[Index](#)

[End User License Agreement](#)

List of Tables

Chapter 2

[Table 2.1 The impact of the replacement of enamel hydroxyapatite groups/ions ...](#)

[Table 2.2 Important physical properties of enamel.](#)

Chapter 3

[Table 3.1 Differences between enamel and dentin tissue.](#)

Chapter 6

[Table 6.1 Different types and subtypes of principal collagen fibers.](#)

Chapter 8

[Table 8.1 Showing different types of oral mucosa and their respective locatio...](#)

List of Illustrations

Chapter 1

[Figure 1.1 H and E stained section showing tooth development.](#)

[Figure 1.2 H and E stained section showing the bud stage of tooth developmen...](#)

[Figure 1.3 H and E stained section showing the bud stage of tooth developmen...](#)

[Figure 1.4 H and E stained section showing the cap stage of tooth developmen...](#)

[Figure 1.5 H and E stained section showing the cap stage of tooth developmen...](#)

[Figure 1.6 H and E stained section showing the early bell stage of tooth dev...](#)

[Figure 1.7 H and E stained section showing the early bell stage of tooth dev...](#)

[Figure 1.8 H and E stained decalcified section showing the late bell stage o...](#)

[Figure 1.9 H and E stained decalcified section showing the late bell stage o...](#)

[Figure 1.10 H and E stained section showing a tooth's root formation \(white ...](#)

[Figure 1.11 Low-power view of a ground section of a deciduous incisor showin...](#)

[Figure 1.12 High-power view of a ground section of a deciduous incisor showi...](#)

[Figure 1.13 H and E stained decalcified section showing DI.](#)

[Figure 1.14 H and E stained decalcified section showing DI with a haphazard ...](#)

[Figure 1.15 H and E stained decalcified section showing DD with haphazard co...](#)

[Figure 1.16 H and E stained decalcified section showing DD with the typical ...](#)

Chapter 2

[Figure 2.1 Micro-computed tomography \(micro-CT\) image showing dental enamel....](#)

[Figure 2.2 Micro-CT image showing surface enamel \(arrow, ground and polished...](#)

[Figure 2.3 Micro-CT image showing remineralized enamel surface \(arrow, ionic...](#)

[Figure 2.4 Micro-CT image showing enamel surface \(black arrow, ground and po...](#)

[Figure 2.5 Ground section of enamel and dentin \(arrows, enamel striae\).](#)

[Figure 2.6 Ground section of enamel and dentin \(arrows, enamel striae\).](#)

[Figure 2.7 Ground section of enamel and dentin \(arrows, enamel striae\).](#)

[Figure 2.8 Ground section of enamel and dentin \(arrows, enamel striae\).](#)

[Figure 2.9 Ground section of enamel and dentin \(arrow, enamel lamellae\).](#)

[Figure 2.10 Ground section of enamel and dentin \(arrows, enamel lamellae\).](#)

[Figure 2.11 Ground section of enamel and dentin \(arrow, enamel lamellae\).](#)

[Figure 2.12 Ground section of enamel and dentin \(arrows, enamel lamellae\).](#)

[Figure 2.13 Ground section of enamel and dentin \(arrows, enamel spindles\).](#)

[Figure 2.14 Ground section of enamel and dentin \(arrows, enamel spindles\).](#)

[Figure 2.15 Ground section of enamel and dentin \(arrow, enamel spindles\).](#)

[Figure 2.16 Ground section of enamel and dentin \(arrows, enamel tufts\).](#)

[Figure 2.17 Ground section of enamel and dentin \(arrows, enamel tufts\).](#)

[Figure 2.18 Ground section of enamel and dentin \(arrows, enamel tufts\).](#)

[Figure 2.19 Micro-CT image of enamel and dentin \(arrows, EDJ\).](#)

[Figure 2.20 Micro-CT image of enamel and dentin \(arrows, EDJ\).](#)

[Figure 2.21 Ground section of enamel and dentin \(arrows, EDJ\).](#)

[Figure 2.22 Ground section of enamel and dentin \(arrow, EDJ\).](#)

[Figure 2.23 Ground section of enamel and dentin \(arrow, neonatal line in ena...](#)

[Figure 2.24 Ground section of enamel and dentin \(arrow, neonatal line in ena...](#)

[Figure 2.25 Ground section of enamel and dentin \(arrow, neonatal line in ena...](#)

[Figure 2.26 Ground section of enamel and dentin \(arrow, gnarled enamel\).](#)

[Figure 2.27 Diagrammatic representation of different zones of enamel caries....](#)

Chapter 3

[Figure 3.1 Ground section showing enamel \(brown\) and dentin \(black and white...](#)

[Figure 3.2 Scanning electron microscope \(SEM\) image of dentin \(arrows, denti...](#)

[Figure 3.3 H and E stained decalcified section of dentin \(arrows, dentinal t...](#)

[Figure 3.4 Ground section showing dentinal tubules \(arrows\).](#)

[Figure 3.5 SEM image showing organic matrix of dentin covering dentinal tubu...](#)

[Figure 3.6 Ground section showing primary curvatures \(orange arrow\) and seco...](#)

[Figure 3.7 Ground section showing primary curvatures \(orange arrow\) and seco...](#)

[Figure 3.8 Ground section of dentin showing interglobular dentin \(arrows\).](#)

[Figure 3.9 Ground section of dentin showing interglobular dentin \(arrows\).](#)

[Figure 3.10 Ground section of dentin showing interglobular dentin \(arrows\)....](#)

[Figure 3.11 H and E stained section of dentin \(black arrow, peritubular dent...](#)

[Figure 3.12 SEM image showing dentin \(black arrow, intertubular dentin; whit...](#)

[Figure 3.13 SEM image showing intertubular \(blue arrow\) and peritubular dent...](#)

[Figure 3.14 Ground section of enamel and dentin \(arrow, dead tracts\).](#)

[Figure 3.15 Ground section of enamel and dentin \(arrow, dead tracts\).](#)

[Figure 3.16 Ground section of enamel and dentin \(arrow, dead tracts\).](#)

[Figure 3.17 Ground section of enamel and dentin \(arrows, tertiary dentin\).](#)

[Figure 3.18 H and E stained decalcified section of regular and tertiary dent...](#)

[Figure 3.19 Ground section showing sclerotic dentin \(arrows, translucent are...](#)

[Figure 3.20 Ground section of root showing Tome's granular layer \(arrow\).](#)

[Figure 3.21 Ground section of root showing Tome's granular layer \(arrow\).](#)

[Figure 3.22 H and E stained section showing prominent dentin caries \(arrows\)...](#)

[Figure 3.23 H and E stained section showing prominent dentin caries \(arrows\)...](#)

Chapter 4

[Figure 4.1 Ground section showing enamel \(blue arrow\), dentin \(white arrow\),...](#)

[Figure 4.2 Ground section showing dentin and cementum \(arrows, acellular cem...](#)

[Figure 4.3 Ground section showing dentin and cementum \(arrows, acellular cem...](#)

[Figure 4.4 Ground section of cementum and dentin \(arrow, cellular cementum\)....](#)

[Figure 4.5 Ground section of cementum and dentin \(arrow, cellular cementum\)....](#)

[Figure 4.6 Ground section of cellular cementum \(arrow, cementocytes lacunae ...](#)

[Figure 4.7 Ground section of cellular cementum \(arrow, cementocyte lacunae w...](#)

[Figure 4.8 Ground section of enamel, cementum, and dentin \(arrow, overlappin...](#)

[Figure 4.9 Ground section of enamel, cementum, and dentin \(arrow, meeting CE...](#)

[Figure 4.10 Ground section of enamel, cementum, and dentin \(black arrow, ena...](#)

[Figure 4.11 Ground section of enamel, cementum, and dentin \(arrow, enamel ov...](#)

[Figure 4.12 H and E stained decalcified section showing tooth apex \(arrow, h...](#)

[Figure 4.13 H and E stained decalcified section tooth apex \(arrow, hyperceme...](#)

[Figure 4.14 H and E stained decalcified section showing cementoblastoma asso...](#)

[Figure 4.15 H and E stained decalcified section showing cementoblastoma asso...](#)

[Figure 4.16 H and E stained decalcified section showing tooth root with prom...](#)

[Figure 4.17 H and E stained decalcified section showing tooth root with prom...](#)

Chapter 5

[Figure 5.1 Micro-CT image showing dental pulp.](#)

[Figure 5.2 H and E stained decalcified section showing dentin and dental pul...](#)

[Figure 5.3 H and E stained decalcified section of dental pulp \(black arrow, ...](#)

[Figure 5.4 H and E stained section of dental pulp \(arrow, cell-rich zone\).](#)

[Figure 5.5 H and E stained section of dental pulp showing blood vessels in p...](#)

[Figure 5.6 H and E stained section showing pulpal fibrosis.](#)

[Figure 5.7 H and E stained section showing pulpal fibrosis.](#)

[Figure 5.8 Decalcified H and E stained section of pulp \(arrow, pulp stone\)....](#)

[Figure 5.9 H and E stained section of pulp \(arrows, pulp stones\).](#)

[Figure 5.10 H and E stained section showing a pulp stone.](#)

[Figure 5.11 H and E stained section of tooth showing granulation tissue atta...](#)

[Figure 5.12 Low-power view of inflamed and vascular granulation tissue with ...](#)

[Figure 5.13 High-power view of granulation tissue containing chronic inflamm...](#)

Chapter 6

[Figure 6.1 H and E stained section showing periodontal ligament \(PDL\) fibers...](#)

[Figure 6.2 H and E stained section showing PDL fibers \(arrow, gingival fiber...](#)

[Figure 6.3 H and E stained section showing PDL fibers \(arrow, gingival fiber...](#)

[Figure 6.4 H and E stained section showing PDL fibers \(arrow, transseptal fi...](#)

[Figure 6.5 H and E stained section showing PDL fibers with transseptal fiber...](#)

[Figure 6.6 H and E stained section showing PDL fibers \(arrow, alveolar crest...](#)

[Figure 6.7 H and E stained section showing PDL fibers \(arrow, alveolar crest...](#)

[Figure 6.8 H and E stained section showing PDL fibers \(arrow, alveolar crest...](#)

[Figure 6.9 H and E stained section showing PDL fibers \(arrows, horizontal fi...](#)

[Figure 6.10 H and E stained section showing PDL fibers \(arrow, horizontal fi...](#)

[Figure 6.11 H and E stained section showing PDL fibers \(arrow, horizontal fi...](#)

[Figure 6.12 H and E stained section showing PDL fibers \(arrow, oblique fiber...](#)

[Figure 6.13 H and E stained section showing PDL fibers \(arrow, oblique fiber...](#)

[Figure 6.14 H and E stained section showing PDL fibers \(arrow, oblique fiber...](#)

[Figure 6.15 H and E stained section showing PDL fibers \(arrows, apical fiber...](#)

[Figure 6.16 H and E stained section showing PDL fibers \(arrows, apical fiber...](#)

[Figure 6.17 H and E stained section showing PDL fibers \(arrows, apical fiber...](#)

[Figure 6.18 H and E stained section showing PDL fibers \(arrows, interradicul...](#)

[Figure 6.19 H and E stained section showing PDL fibers \(arrows, interradicul...](#)

[Figure 6.20 H and E stained section showing gingivitis \(blue arrow, smooth g...](#)

[Figure 6.21 H and E stained section showing edematous sulcular and junctiona...](#)

[Figure 6.22 High-power H and E stained section of gingivitis showing aggrega...](#)

[Figure 6.23 H and E stained section showing periodontitis \(arrow, loss of al...](#)

[Figure 6.24 H and E stained section showing periodontitis \(arrows, gingival ...](#)

[Figure 6.25 Higher magnification H and E stained section showing periodontit...](#)

Chapter 7

[Figure 7.1 H and E stained section showing compact bone outside tooth apex....](#)

[Figure 7.2 H and E stained section of compact bone.](#)

[Figure 7.3 H and E stained section of compact bone.](#)

[Figure 7.4 H and E stained section of compact bone \(arrow, circumferential l...](#)

[Figure 7.5 H and E stained section of compact bone \(arrow, circumferential l...](#)

[Figure 7.6 H and E stained section of compact bone \(arrow, circumferential l...](#)

[Figure 7.7 H and E stained section of compact bone \(arrow, concentric lamell...](#)

[Figure 7.8 H and E stained section of compact bone \(arrow, concentric lamell...](#)

[Figure 7.9 H and E stained section of compact bone \(arrow, concentric lamell...](#)

[Figure 7.10 H and E stained section of compact bone \(arrow, interstitial lam...](#)

[Figure 7.11 H and E stained section of compact bone \(arrow, interstitial lam...](#)

[Figure 7.12 H and E stained section of compact bone \(arrow, interstitial lam...](#)

[Figure 7.13 H and E stained section of compact bone \(arrows, osteocytic lacu...](#)

[Figure 7.14 H and E stained section of compact bone \(arrows, haversian canal...](#)

[Figure 7.15 Ground section of bone \(arrows, Volkmann's canal\).](#)

[Figure 7.16 H and E stained section of compact bone \(green circle, osteon\)....](#)

[Figure 7.17 H and E stained section of spongy bone showing bony trabeculae....](#)

[Figure 7.18 H and E stained section of spongy bone showing bony trabeculae....](#)

[Figure 7.19 H and E stained section of spongy bone showing marrow spaces bet...](#)

[Figure 7.20 H and E stained section of spongy bone showing marrow spaces bet...](#)

[Figure 7.21 H and E stained sections showing osteoporosis \(arrows, generaliz...](#)

[Figure 7.22 H and E stained sections showing osteoporosis \(arrow, generalize...](#)

[Figure 7.23 H and E stained section showing necrotic bone and depletion of o...](#)

[Figure 7.24 H and E stained section showing necrotic bone, depletion of oste...](#)

[Figure 7.25 H and E stained section of compact osteoma showing mature lamell...](#)

[Figure 7.26 H and E stained section of compact osteoma showing mature lamell...](#)

[Figure 7.27 H and E stained section showing Paget's disease with chaotic tra...](#)

[Figure 7.28 H and E stained section of Paget's disease with jigsaw puzzle-li...](#)

[Figure 7.29 H and E stained section of osteosarcoma showing bone fragments o...](#)

[Figure 7.30 H and E stained section of osteosarcoma showing malignant tumor ...](#)

Chapter 8

[Figure 8.1 H and E stained section showing oral mucosa \(mucous membrane of c...](#)

[Figure 8.2 H and E stained section showing papillae of the tongue \(arrow, ta...](#)

[Figure 8.3 H and E stained section showing papillae of the tongue \(arrow, su...](#)

[Figure 8.4 H and E stained section showing fungiform papillae of the tongue....](#)

[Figure 8.5 H and E stained section showing papillae of the tongue \(arrow, fi...](#)

[Figure 8.6 H and E stained section showing papillae of the tongue \(arrows, f...](#)

[Figure 8.7 H and E stained section showing papillae of the tongue \(arrow, ci...](#)

[Figure 8.8 H and E stained section showing circumvallate papilla of the tong...](#)

[Figure 8.9 H and E stained section \(arrow, taste bud\).](#)

[Figure 8.10 H and E stained section showing taste buds.](#)

[Figure 8.11 H and E stained section of keratinized oral epithelium \(arrow, k...](#)

[Figure 8.12 H and E stained section of parakeratinized oral epithelium \(arro...](#)

[Figure 8.13 H and E stained section of keratinized oral epithelium \(arrow, s...](#)

[Figure 8.14 H and E stained section of the tissue showing deep ulcer with de...](#)

[Figure 8.15 H and E stained section showing hyperkeratosis, subepithelial ba...](#)

[Figure 8.16 H and E stained section showing hyperkeratosis, subepithelial ba...](#)

[Figure 8.17 H and E stained section of the tissue showing subepithelial vesi...](#)

[Figure 8.18 H and E stained section of the tissue showing subepithelial vesi...](#)

[Figure 8.19 H and E stained section showing round/ovoid mature fat cells app...](#)

[Figure 8.20 H and E stained section showing round/ovoid mature fat cells app...](#)

[Figure 8.21 H and E stained section of the tissue showing mild epithelial dy...](#)

[Figure 8.22 H and E stained section of the tissue showing moderate epithelia...](#)

[Figure 8.23 H and E stained section of the tissue showing severe epithelial ...](#)

[Figure 8.24 H and E stained section showing diffused proliferation of neopla...](#)

[Figure 8.25 H and E stained section showing diffused proliferation of neopla...](#)

Chapter 9

[Figure 9.1 Illustration representing the major salivary glands of the oral c...](#)

[Figure 9.2 H and E stained section of serous salivary gland \(parotid gland\)....](#)

[Figure 9.3 H and E stained section of serous salivary gland \(arrows, serous ...](#)

[Figure 9.4 H and E stained section of serous salivary gland \(arrows, serous ...](#)

[Figure 9.5 H and E stained section of mucous salivary gland \(arrows, mucous ...](#)

[Figure 9.6 H and E stained section of mucous salivary gland \(arrows, mucous ...](#)

[Figure 9.7 H and E stained section of mucous salivary gland \(arrows, mucous ...](#)

[Figure 9.8 H and E stained section of mixed salivary gland with serous and m...](#)

[Figure 9.9 H and E stained section of mixed salivary gland \(arrows, serous d...](#)

[Figure 9.10 H and E stained section of seromucous gland with blood vessels a...](#)

[Figure 9.11 H and E stained section of serous gland \(arrow, intercalated duc...](#)

[Figure 9.12 H and E stained section of serous gland \(arrow, intercalated duc...](#)

[Figure 9.13 H and E stained section of serous gland \(arrow, striated duct\)....](#)

[Figure 9.14 H and E stained section of serous gland \(arrow, striated duct\)....](#)

[Figure 9.15 H and E stained section of serous gland \(arrow, excretory duct\)....](#)

[Figure 9.16 H and E stained section of serous gland \(arrow, excretory duct\)....](#)

[Figure 9.17 H and E stained section of serous gland \(white arrow, inflammato...](#)

[Figure 9.18 H and E stained section of serous gland \(white arrow, inflammato...](#)

[Figure 9.19 H and E stained section of necrotizing sialometaplasia \(white ar...](#)

[Figure 9.20 H and E stained section of necrotizing sialometaplasia \(white ar...](#)

[Figure 9.21 H and E stained section of pleomorphic adenoma showing a variety...](#)

[Figure 9.22 H and E stained section of pleomorphic adenoma showing a variety...](#)

[Figure 9.23 H and E stained section of a Warthin tumor \(white arrows, cystic...](#)

[Figure 9.24 H and E stained section of a Warthin tumor \(white arrow, oncocyt...](#)

An Illustrated Guide to Oral Histology

Edited by

Imran Farooq

BDS (Pak), MFGDP RCS (UK), MFDS RCPS (UK), MSc Oral Biology (UK)

Department of Biomedical Dental Sciences

College of Dentistry

Imam Abdulrahman Bin Faisal University

Dammam, Saudi Arabia

Saqib Ali

BDS (Pak), MFGDP RCS (UK), MFDS RCPS (UK), MSc Oral Biology (UK)

Department of Biomedical Dental Sciences

College of Dentistry

Imam Abdulrahman Bin Faisal University

Dammam, Saudi Arabia

Paul Anderson

BSc, PhD, MInstP CPhys

Dental Physical Science Unit

Institute of Dentistry

Queen Mary University of London

London, United Kingdom

WILEY Blackwell

This edition first published 2021
© 2021 John Wiley & Sons Ltd

All rights reserved. No part of this publication may be reproduced, stored in a retrieval system, or transmitted, in any form or by any means, electronic, mechanical, photocopying, recording or otherwise, except as permitted by law. Advice on how to obtain permission to reuse material from this title is available at <http://www.wiley.com/go/permissions>.

The right of Imran Farooq, Saqib Ali, and Paul Anderson to be identified as the authors of the editorial material in this work has been asserted in accordance with law.

Registered Offices

John Wiley & Sons, Inc., 111 River Street, Hoboken, NJ 07030, USA
John Wiley & Sons Ltd, The Atrium, Southern Gate, Chichester, West Sussex, PO19 8SQ, UK

Editorial Office

9600 Garsington Road, Oxford, OX4 2DQ, UK

For details of our global editorial offices, customer services, and more information about Wiley products visit us at www.wiley.com.

Wiley also publishes its books in a variety of electronic formats and by print-on-demand. Some content that appears in standard print versions of this book may not be available in other formats.

Limit of Liability/Disclaimer of Warranty

The contents of this work are intended to further general scientific research, understanding, and discussion only and are not intended and should not be relied upon as recommending or promoting scientific method, diagnosis, or treatment by physicians for any particular patient. In view of ongoing research, equipment modifications, changes in governmental regulations, and the constant flow of information relating to the use of medicines, equipment, and devices, the reader is urged to review and evaluate the information provided in the package insert or instructions for each medicine, equipment, or device for, among other things, any changes in the instructions or indication of usage and for added warnings and precautions. While the publisher and authors have used their best efforts in preparing this work, they make no representations or warranties with respect to the accuracy or completeness of the contents of this work and specifically disclaim all warranties, including without limitation any implied warranties of merchantability or fitness for a particular purpose. No warranty may be created or extended by sales representatives, written sales materials or promotional statements for this work. The fact that an organization, website, or product is referred to in this work as a citation and/or potential source of further information does not mean that the publisher and authors endorse the information or services the organization, website, or product may provide or recommendations it may make. This work is sold with the understanding that the publisher is not engaged in rendering professional services. The advice and strategies contained herein may not be suitable for

your situation. You should consult with a specialist where appropriate. Further, readers should be aware that websites listed in this work may have changed or disappeared between when this work was written and when it is read. Neither the publisher nor authors shall be liable for any loss of profit or any other commercial damages, including but not limited to special, incidental, consequential, or other damages.

Library of Congress Cataloging-in-Publication Data

Names: Farooq, Imran, 1984- editor. | Ali, Saqib, 1985- editor. | Anderson, Paul (Professor of oral biology), 1959- editor.

Title: An illustrated guide to oral histology / edited by Imran Farooq, Saqib Ali, Paul Anderson.

Description: First edition. | Hoboken, NJ : Wiley, 2021. | Includes bibliographical references and index.

Identifiers: LCCN 2020038283 (print) | LCCN 2020038284 (ebook) | ISBN 9781119669449 (cloth) | ISBN 9781119669548 (adobe pdf) | ISBN 9781119669609 (epub)

Subjects: MESH: Mouth-anatomy & histology | Atlas

Classification: LCC QP146 (print) | LCC QP146 (ebook) | NLM WU 17 | DDC 612.3/1-dc23

LC record available at <https://lcn.loc.gov/2020038283>

LC ebook record available at <https://lcn.loc.gov/2020038284>

Cover Design: Wiley

Cover Images: Imran Farooq

Preface

It gives us great pleasure to present our book that addresses problems with respect to the teaching and learning of oral histology. The idea to write a book focused on important details of oral histological features popped up around two years ago, when we felt there are many deficient areas in the present literature concerning the said topic. This book gives information about these features in a user-friendly format. It contains high-definition (HD) histological images of oral tissues with integrated text containing their introduction, key identifying histological features, and clinical significance. The textbook is intended for dental undergraduate and postgraduate students, license examination aspirants, and oral histology instructors. We strongly believe that the book will suit the needs of professionals in each of these disciplines.

We would like to mention here that we do not wish the present book to be a substitution of more general textbooks in oral histology. It is our belief that a good dental practitioner not only needs strong clinical skills, but also a solid understanding of basic sciences. Consequently, our book should be considered as providing the first step of the ladder in learning oral histology. This book is aimed at encouraging students to pursue a more exhaustive appreciation of the subject. To counter technology needs and in-line with the digital age, a companion website for the book has also been developed.

Finally, we do not imagine ourselves to be error-free, and would always be open to criticism. Your suggestions to improve the book are greatly appreciated.

Imran Farooq
Saqib Ali
Paul Anderson

Sample Preparation

This atlas contains images obtained through hematoxylin and eosin (H and E) staining, micro-computed tomography (micro-CT), ground sectioning, and scanning electron microscopy (SEM). The steps for the preparation of samples and collection of images are as follows.

Hematoxylin and Eosin (H and E) Stained Sections

The tissues were stored in 10% buffered formalin prior to their use. The hard tissue samples were decalcified in 8% formic acid. The tissues (hard and soft) were washed with distilled water and then transferred into alcohol solution for the dehydration procedure. Post-dehydration, the samples were cleared in xylene solution. The tissues after clearing were shifted into soft paraffin and hard paraffin baths. The sections were blocked by embedding in hard paraffin and thin sections of 7 μm were taken from blocked tissues using microtome. H and E staining was performed, samples were dehydrated, and cover slips were placed using DPX mounting medium.

Micro-computed Tomography (Micro-CT)

The tissue blocks to observe enamel and dentin were prepared by cutting the roots with a high-speed handpiece. The anatomical crown portion was retained and a micro-CT machine (SkyScan 1172, version 1.5; Bruker Micro-CT, Kontich, Belgium) was used to obtain images of enamel and dentin. The images were obtained by scanning the samples

using a voltage source of 100-KV, source current of 100- μ A, pixel size of 27.45- μ m, and exposure time of 1600 msec. In addition, 360° rotation, filter of Al + Cu and, Tagged Image File Format (TIFF) were used. The raw images were recreated using the NRecon software (Bruker SkyScan, Aartselaar, Belgium). The TIFF images were later converted to Joint Photographic Experts Group (JPEG) format using Microsoft Paint® software.

Ground Sections

For each ground section preparation, freshly extracted teeth were collected and fixed in acrylic blocks. The teeth were sectioned using a water-cooled diamond saw (Isomet® 5000 Linear Precision Saw, Buehler Ltd, IL, USA) longitudinally (for longitudinal sections) and horizontally (for transverse sections) to split the tooth into two parts. Each thick section of tooth was then grinded on carborundum stone with equal digital pressure to make the sections paper thin. The sections were then dehydrated in absolute alcohol for 10 minutes and clearing was then performed in xylene solution for 15 minutes. The section was mounted on to a glass slide using DPX mounting medium. Coverslip was then placed on top of the section carefully to avoid air entrapment.

Scanning Electron Microscopy

To observe dentinal tubules, SEM was performed. Dentin discs of 1.5 mm were first made by cutting the teeth horizontally over cemento-enamel junction using a precision saw (Isomet® 5000 Linear Precision Saw, Buehler Ltd, IL, USA). The discs were exposed to ethylenediaminetetraacetic acid (EDTA) for one minute to unblock the dentinal tubules. After washing them with

distilled water for one minute and post air drying, these discs were mounted on stubs and sputter coated with gold. The discs were observed in an SEM (FEI, Inspect F50, The Netherlands) to obtain micrographs of dentinal tubules.

About the Editors

Dr. Imran Farooq

Dr. Imran Farooq graduated from Baqai Dental College, Karachi, Pakistan in 2007, and then worked in the same institute as a Clinical Demonstrator (Restorative Dentistry) for two years before joining Queen Mary, University of London (QMUL), UK, for his postgraduation in Oral Biology. After graduation from QMUL in 2011, he joined the College of Dentistry, Imam Abdulrahman Bin Faisal University, Dammam, Saudi Arabia, in 2012. He is currently working as an Assistant Professor in the Oral Biology Division. He has 10+ years' experience in teaching oral biology and histology to dental students. He has published 70+ research articles and book chapters that have received 700+ citations to date. His research interests include biomaterials, dental materials, hard tissue mineralization, and dental education.

Dr. Saqib Ali

Dr. Saqib Ali graduated from Baqai Dental College, Karachi, Pakistan in 2009, and then joined QMUL, UK, to pursue his postgraduation in Oral Biology. After graduating from QMUL in 2011, he worked as an Assistant Professor in the Oral Biology Department of Sardar Begum Dental College and Khyber College of Dentistry, Peshawar, Pakistan, and then, since 2016, he has been working as a faculty member (Course Director Oral Biology) in College of Dentistry, Imam Abdulrahman Bin Faisal University, Dammam, Saudi Arabia. He has 10+ years' experience in teaching oral biology and histology to dental students. He has published 40+ research articles and book chapters that have received 200+ citations to date. His research