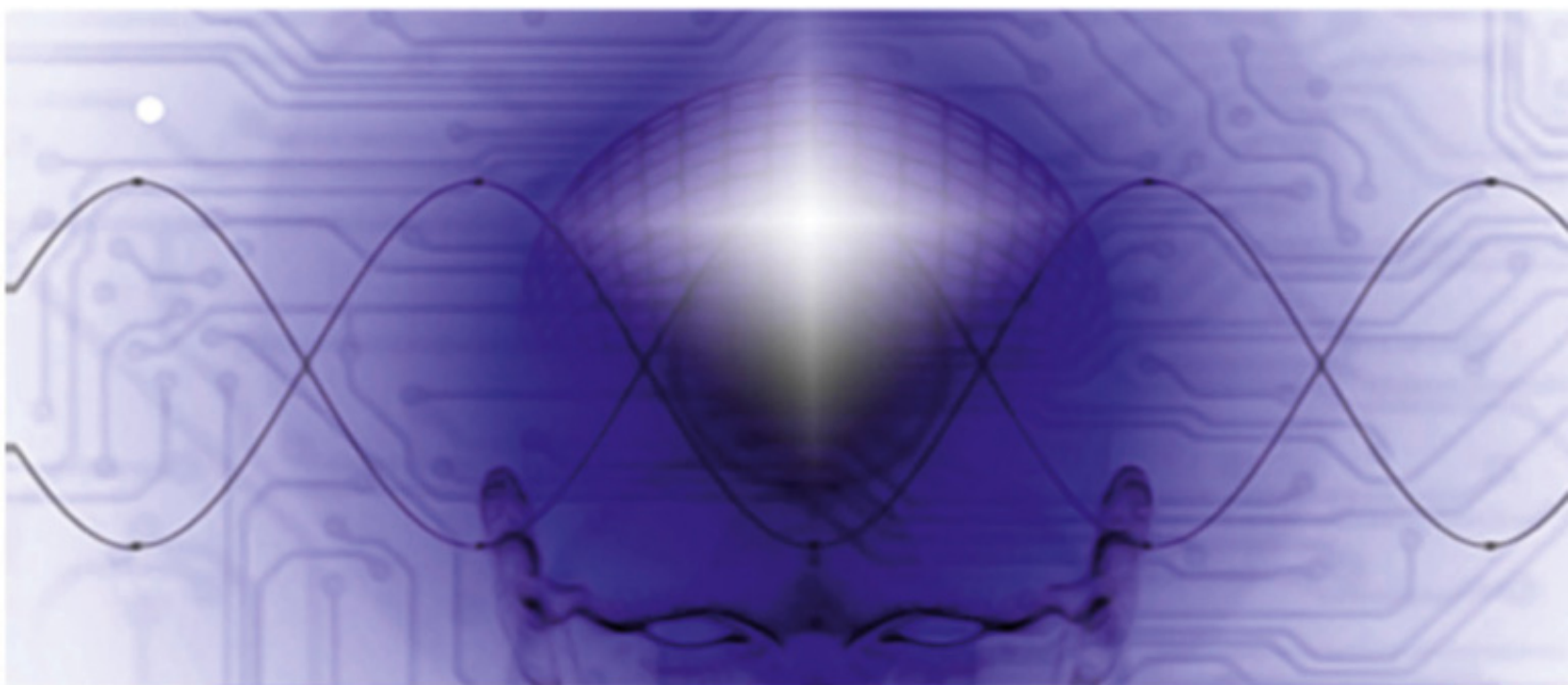


Dr. Winfried Weber

# The denied Truth behind Medicine

The big Rethink



# Content

Instead of a Preface: The evil Spirit

## **Part 1: Quantum Energetics**

Paradigms -A short Treatise on Scientificity and what is opposed to it

New Worlds -The Quantum Field

    The fungal Hypothesis

The fourth Dimensions

Quotations

India

    Life and Life Energy

    The Chakras

    Relationships between Chakras and Quantum Field

China

    The traditional Chinese Aspect

    The Energy Cycle and Reaction Pattern; The Energy Cycle of Qi

    Assignment of the Chakras and Quantum Spaces to the Chinese functional Circuits

The West

    The Energy Concept of the West

Mind-brain, Heart-brain, Gut-brain

Portals - Access to higher Levels of Information  
The third Eye

## **Part 2: Psychosomatics**

The Skin, a boring Organ

The Skin as a Map

The Skin as Weather Map

For Insiders: Proof of increased Voltage and  
Temperature Fields

Health

Fear

Where does Fear come from

Fears and Bodies

## **Part 3: Clusters and Reaction Patterns**

Epigenetics

What makes Healing possible

Values

Reaction Pattern I - Binding

Reaction Pattern II - Compulsion

Reaction Pattern III - Harmony

Reaction Pattern IV - Violence

Reaction Pattern V - Escape the World

Reaction Pattern VI - Pancreas - Connection

Reaction Pattern VI - Stomach - Self - Exclusion

## **Part 4: Therapy**

Therapy of Reaction Patterns (RM)

Basic Therapy 1.Part  
Basic Therapy 2nd Part

Emotional Tapings  
Klaster

## **Part 5: Segments**

The Interaction of segmental and non-segmental  
Complaints

1. Diaphragm, Shoulder-Arm Syndrome and parietal Migraine left
  2. Diaphragm, Shoulder-Arm Syndrome and parietal Migraine right
  3. The third and fourth thoracic Segment and the upper lumbar Spine
  4. The middle lumbar Spine (L2, L3)
  5. The lower lumbar Spine (L4)
  6. Co-Production Sciatica Neuralgia
  7. Neck Tension and craniosacral Coupling The Sell' Points
- The Sell'Pressure Points

## **Part 6: Stress Metabolism**

The Truth behind Medicine

The Author

## **Instead of a Preface: "The Evil Spirit"**

An Ethiopian woman came to my office together with her translator. The colored woman had wanted to become pregnant for 6 years but unfortunately without any success so far. She came across my homepage in the internet. I carried out the necessary examinations. Now she sat opposite me and looked at me with big, expectant eyes. Her translator asked me how I imagined the therapy of her girlfriend. From my side followed a fifteen-minute explanation of the therapeutic procedure, the reprogramming of the nerve structures, the necessary stretching of the anatomical structures, possible side effects and many, many other things. They let me talk without interruption. When I had finished my explanations, my new patient asked her translator: "What is he going to do?" "He's going to drive the evil spirit out of your lower abdomen," she replied. "You're not serious," I countered. Her short and decisive answer was "Yes, I am!" I couldn't find the words at that moment. At that moment I was no longer sitting in my practice but in the African bush and I tried to understand the words of the translator. Slowly it dawned on me that great wisdom was hidden behind her words. Who or what was this evil spirit that had taken possession of the underbelly of my patient?

The orthodox medical examination revealed no conspicuous findings. It's all right. It's fine. But it still didn't work on the pregnancy. The function, the control, the energetic position in this area prevented the development of a pregnancy. And that was exactly the evil spirit the translator was talking about.

Let's continue the thought. Cancer is found in the breast of a woman. The corpus delicti, the cancerous lump, is removed. The woman is cured. Maybe a little chemotherapy and radiation to make absolutely sure it's all gone. But is that way of thinking even possible?

The actual disease process takes place on another level, the control level, an energetic level. And on this level, which is responsible for the development of the process, nothing at all has happened in therapy. But how can the bioelectrician and electronics engineer supply energy and restore the control system if he does not know the cause? Or, to put it another way, who feeds our evil spirit? In former times it was thought that it is innate, educated, trained behavior patterns that influence our function, control and energetics. Today we can assume that this information is downloaded from data clouds, corresponding to the I-Clouds. They contain "software" for appropriate or inappropriate protective behavior, for escape or defense, "software" for the development of fears, pain, diseases and the whole spectrum of health

disorders that make our day go by. In ancient China and its traditional Chinese medicine, data clouds were not yet known. Here one spoke of functional circuits. In this book they are called and discussed as the six reaction patterns. Afterwards, we will guide energetic paths that will bring the somewhat sloping energy position of the body back into balance. But for this we have to start from scratch.

# **Part 1**

## **Quantum Energetics**

# Paradigms



## **A short Treatise on Scientificity and what is opposed to it.**

It looks as if we are once again facing a paradigm shift, i.e. the perception of what the world actually is has changed.

In the 16th century, the geocentric world view was still valid: the earth is a disc and the sun rotates around the earth.

The Copernican revolution brought the heliocentric sun system. In Nuremberg in 1543 Copernicus' main work appeared under the title "De revolutionibus orbium coelestium" (about the circular movements of the world's bodies). His discoverer, the physician and astronomer Nicolaus Copernicus, died from a stroke in Frauenburg on 24 May 1543, when his work was published. The criticism of his assertions was fierce. Even Martin Luther reacted with the



words: "The fool wants to turn the whole art of astronomy around! But as the Scriptures show, Joshua meant the sun to stand still, not the earth!"

Copernicus was banned in 1600. It was not until 1757 that the Catholic Church recognized the validity of the Copernican world system. In 1993, Nicolaus Copernicus received a late rehabilitation by Pope John Paul II.

At the end of the 18th century, a young military doctor named Friedrich Schiller submitted the first of three medical dissertations in Karlsruhe. In 1779, under the title "Philosophy of Physiology", Schiller dealt with the question of the relationship between body and mind in the human organism, thus questioning the entire teaching at that time.

He put forward the following thesis:

"There must be a force that comes between spirit and matter and unites them. A force that is changed by matter and that can change the spirit.

This would therefore be a force that is partly spiritual and partly material, a being that is partly permeable and partly impenetrable, ...."

The three responsible experts rejected the dissertation on the basis of its speculative statements, know-it-alls and the unscientific style.

In Jena in 1789, he gave his inaugural academic speech in reaction to this rejection of the topic: "What does universal history mean and at what point in time does one study it? In it he talks about the status of the so-called bread scholar:

"What characterizes a bread scholar? The bread scholar is diligent to fulfil the conditions for a profession and only these. Everything that does not serve this purpose is discarded. He is immediately worried when something new happens in science, because it calls into question his previous knowledge and his previous work. Every innovation frightens him, because it breaks the old.

Well, yes. The question arises whether this bread scholar only existed in the 18th century?

In the 20th century, new controversies arise. Rigid medicine criticizes fluid medicine, structural medicine functional medicine, morphological energetic medicine, guideline medicine information- and quantum medicine, scientists knowledge creators".

Hans-Peter Dürr, physicist and until autumn 1997 director at the Max Planck Institute for Physics in Munich and winner of the Alternative Nobel Prize, commented on this:

"We still think in the 19th century, although we have technologies that are 20th century.

And now we want to shape the 21st century with "thinking", with technology that is 20th century. That's our problem today."

The German physicist Wolfgang Ludwig adds:

"From an incomplete world view no correct conclusions can be drawn, at best approximations. Only with the inclusion of quantum field physics are valid statements possible."

In all biological structures, the connection between construction and function can be seen. Structure and function are mercilessly connected. At least that's what it says in the syllabus for biology classes. It is a fundamental biological principle that living beings are adapted to their environment in terms of construction and way of life and that the connection between construction and function is recognizable in all biological structures. Without structure there can be no function! But is that really so? Do we not make it too easy for ourselves with this "egg-cup-egg mentality", especially in the medical field? Are structures only limited to the third dimension or, if we think ahead, to the fourth dimension (space and time)?

The effect of many therapies, including anesthesia, is not scientifically deciphered and must therefore be dismissed as unscientific. Our experience shows that something works, only the current state of science is not able to fathom the effect. With the same justification a first grader could question the existence of multiplication.

Fortunately, the great scientists of our time admit that a large amount of scientific facts must be recalled.

The scientific thinking about our thinking, for example, has changed massively in recent years. Until 10 years ago, physiologists were clear about how the thinking process in humans works, which structures are responsible for it, which areas of the brain contain specific functions. In a so-called manifesto of brain research by eleven leading German neuro-scientists from different sub-disciplines it was decided in 2004 to bring clarity into the last secrets of brain function within the following 10 years. The result was sobering. Professor Singer, a leading brain researcher and the former director of the Max Planck Institute for Brain Research in Frankfurt, said about it in the 3Sat programme "Scobel" in 2014:

"15 years ago, many people thought they knew more than we know now. It was thought that if you work your way from the sensory surface of the nerve structures, for example the eye that sees the threat, to the structures of the effector side, the muscles that repel the threat, the function of our brain will become obvious and we will understand all the mechanisms at work here.

The result was sobering. The brain and the thinking process turned out to be a self-active, highly complex, enormously networked, highly-dimensional(!), interconnected system, whose mode of operation could no longer be explained by structures alone". Matthias Eckoldt, philosopher and writer, described the problem in his book of the same name with the question: Can the brain understand

the brain? Prof. Randolph Menzel concludes: "In principle, we know nothing about the brain, because the networks are the main power of the nervous system.

Neuronal structures, the so-called data highways of the brain, were once considered immutable. Today we know that emotional experiences transform these structures. Environmental genetic alterations in the broadest sense, so-called epigenetic influences, also contribute to this transformation of functions. Structures fade into the background".

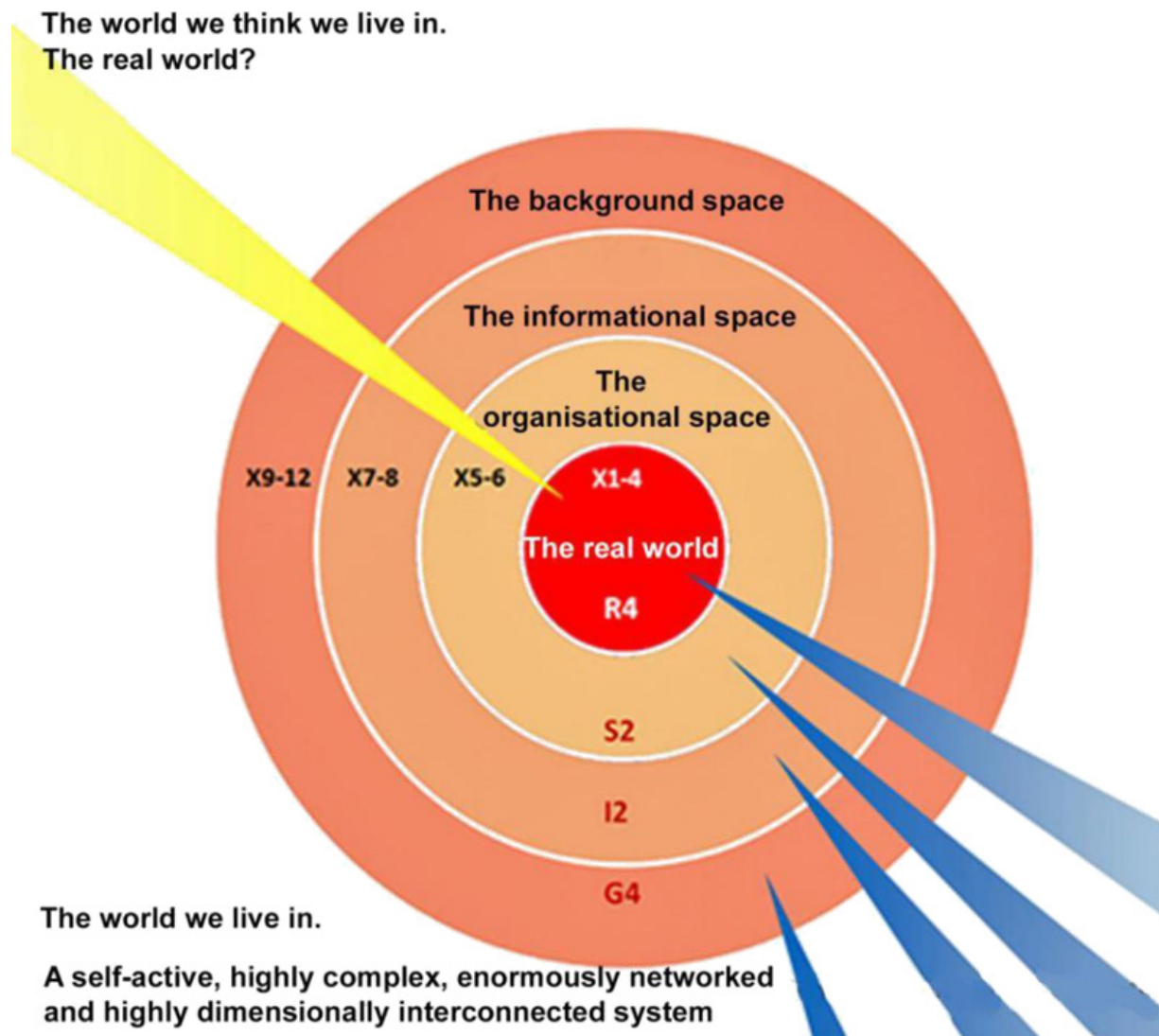
Prof. Singer therefore redefines consciousness: "In reality, it is a system composed of many separate subsystems, all of which work on some aspect of perception or future planning. All sub-systems are interlinked and communicate with each other. The interconnection is designed in such a way that coherent (contiguous) states can arise from it, which organize themselves and do not need a leader. The best one imagines an orchestra that can play without a conductor when it has agreed on a common rhythm".  
Source: Scobel 3sat

# New Worlds

## The Quantum Field

A possible answer to the "How can something like our brain and the control of our thoughts function" can be derived from the 12-dimensional or quantum field model by Burkhard Heim and Dröscher. This model has been proven several times but is doubted by many scientists, as it is probably not understood. The 12-dimensional model describes how our world functions. It consists of a lot of formulas that are not comprehensible for non-physicists, which doesn't make it more popular. It describes information and quantum fields and thus falls into the field of quantum mechanics. In this context the words of Richard Feynman are reassuring, who said: "Whoever believes to have understood quantum theory, has not understood it". Those who nevertheless want to deal with the 12-dimensional model more intensively should refer to the work of the physicists Wolfgang Ludwig and Andreas Resch which is available on the internet. The quantum model divides our world into 12 dimensions, according to the peel of an onion. The three-dimensional world forms the core. The 4th dimension, time, gives existence to the first three dimensions for our senses. In the 5th and 6th dimension follows the organizational space (S2), a logistics center, which has the task of realizing events, behavior and structures in time. The 7th and 8th dimension (I2), the informational space, represents a general database (the morphogenetic field, the Akashic Chronicle), which stores

and makes data available for our four-dimensional world (R4).



The 9th to 12th dimension (G4) stands for the collective consciousness, the mental space that guides our destiny and the destiny of the world.

For a better understanding an example from the real world. Imagine a newspaper publisher. The publisher and the editor-in-chief are sitting in the executive floor (G4, 9th to 12th floor). The publisher and the editor-in-chief determine the journalistic guidelines. The editor-in-chief implements this guideline, he realizes it. To do this, he

needs data that he obtains from the data department (I2, 7th and 8th floor). The employees of this information department, the editors, process the data and make it available to the organizational department (S2, 5th and 6th floor), which sets, prints and distributes the finished articles. Once the information has arrived at the newsagent, it is available to the ordinary citizen. It is unclear, however, whether this information is true, how much it is filtered and what the management wants to achieve with it.

As a normal citizen we have no influence on the topics chosen by the top management but the entire readership of the magazine (the collective consciousness) does.

## **Space-Time - neither Space nor Time**

I must admit that trying to question time always creates contradiction. In a book that describes the meaning of life from God's point of view, I read that life serves to view God's creation from a certain perspective. If one starts from several or even many lives, it is a bouquet of perspectives that makes us understand the world. In order to be able to make these impressions in peace, we were given the instrument of time by God. Time is therefore a function of perspective. "You see," you will say, "time exists after all."

Yes, in our illusion. Imagine going to the cinema. The film that comes out of the projector is nothing more than a packet of data circulating in the computer. We look at the data packet and are locked into the film with our feelings, emotions and thoughts. But the film is unreal and timeless, a data package, a material-free information.

Time is not existent. It is, as I said, only a function, a tool of the perspective. We live, what is known from near-death experiences, many lives at the same time that allow us a multitude of perspectives of what is, has been or will be

happening in the world. By understanding the perspectives, it is possible to understand the big picture.

Warnke reports in his book "Quanten-Philosophie und Interwelt" that the following concept was presented on the government-related website India Daily in the section "Technology":

"There are higher spheres in the universe in which all known physical laws of the material universe fail, physical objects collapse into several states of being, and in such moments, we belong to several parallel universes. They exist within us and are therefore closer to us than we can imagine. While the material body remains in the physical universe, we communicate with ourselves from the parallel universe. From there, our brain is called upon to work and sustain our lives. When we die, we live on (in parallel universes)."

(see also the article: The fourth dimensions)





## **The Fungal Hypothesis**

If we assume that the spacetime block is unchangeable and that the "stage world" has a fixed script, one could speculate that before entering this four-dimensional world, we can determine the point of entry ourselves in order to gain specific experiences in certain areas of this world.

Could it therefore perhaps be that...

we are being deliberately catapulted into the dependency of time and life as we procreate from time-free dimensions?

...we possess connections to these dimensions via a time-free mycelium, the "roots of the soul", and tap information via this mycelium (antennae)?

...we are only the fungus visible in time, the transient fruiting body, of our time-free and therefore immortal soul?

- But this is pure speculation.

# The fourth Dimension

How is the fourth dimension defined? "Length x width x height x time" would be the Einsteinian variant, i.e. spacetime (x times y times z times t). It also corresponds to Burkhard Heim's 12-dimensional model.

If we exchange the factor time for timelessness or eternity, a new factor "w" is added. It denotes the expansion in a direction that cannot be represented by other previously defined dimensions (x, y, z). This factor turns our universe into a multiverse with galaxies, suns, planets and earths existing in parallel. These cannot be grasped as reality from our third dimension, since each dimension has its own reality.

Among the unchallenged theories of quantum physics are the assumptions that, since time does not exist here, past, present and future exist in parallel and are divided in a multiverse on several earths. In addition, there are earths that act as "training grounds" and where "probabilities" can be tested in their effect on our soul costume. These probabilities are challenges, opportunities and decisions that challenge us in our daily routine and must be decided by us. We have targeted and undirected access to these worlds primarily through our dream events, especially through prospective, retrospective or telepathic dreams of truth.

# Quotations

The body cannot become sick on its own. It is only the projection surface of the consciousness. It is like a screen that cannot create any images on its own... Therefore, it does not make sense to cut holes in the screen if one does not like the film (medical operations) or to always paint the screen white (symptomatic treatment) ....

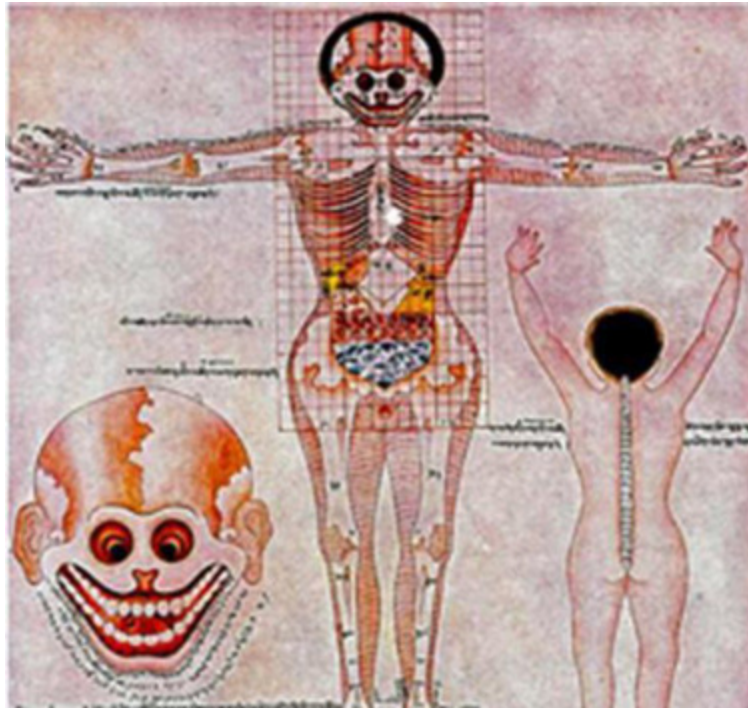
What we usually call sickness is ... not the actual illness but only its symptom, its physical expression. Disease itself is rather a disharmony in the consciousness of the human being, a sign for the falling out of the human being from his natural order, a disturbance of the whole human being and not only of his body.

Tepperwein in his book "Was deine Krankheit dir sagen will"

The disease starts on the information level of the human being, then it moves on to the energetic level and later, if the condition is not corrected, it manifests itself in the body. When a person recovers, this happens in the same way: First, the illness leaves the person on the information level, then on the energetic level and only at the end on the physical level and the person recovers.

Olga Häusermann Potschar in „Russische Informationsmedizin“

# India



## Life and life energy

The "function of life", the "state of life", the "process of life" belong to the chapters where scientists are still in the dark with an explanation. Wikipedia comments on living systems:

They are material systems that are separated from their environment, have metabolism and energy metabolism and are therefore in interaction with their environment, organize and regulate themselves (homeostasis), reproduce and are therefore capable of growth and differentiation.

If one takes these definitions as basic definitions for life, one would have to see, for example, crystals as living systems. What crystals and living beings have in common is

that they are exposed to information fields that most probably determine time and structure in the 4th dimension of our being.

To convert information into structure, energy is necessary. We call it life energy, the Indian Prana, the Chinese Qi.

Everyone agrees that such an energy must exist but scholars argue about the details. Let us take a look at the individual teachings and what they have in common.

It has been a few years since I was introduced to a plasma emitter in a small, German-Chinese clinic in Oberhessen. It was a device which generates cold plasma with a voltage build-up of 25 to 150kV. Plasma produces the fourth state of aggregation besides solid, liquid and gaseous, namely ionized, electrically conductive gas from ionized molecules and low energy electrons. Physicists use them for space engines, lamps or televisions. In agriculture, seed irradiation accelerates the growth of crops, which in turn produce higher yields free of harmful substances. In medicine, wounds and skin diseases are healed and viruses, bacteria including multi-resistant germs and fungi are killed. Inflammations, sprains and broken bones heal on average one third faster. Cancer cells are killed.

Cell tension mV	Cell pH	Saliva pH	Source: Jerry Tennant
-100	8.74	7.95	
-90	8.58	7.78	
-80	8.40	7.60	
-70	8.23	7.43	
-60	8.05	7.43	
-50	7.88	7.08	Healing normally possible (cell division possible)
-40	7.70	7.04	
-35	7.61	6.81	Standard for children
-30	7.53	6.73	
-25	7.44	6.64	Standard for adults
-20	7.35	6.55	
-15	7.26	6.46	Fatigue
-10	7.18	6.38	Feelings of illness
0	7.00	6.55	
+30	6.48	5.68	Carcinogenesis possible

In order to generate cold plasma, you must supply energy. If this energy meets gas atoms or molecules, for example in the form of electromagnetic radiation, electrons are released from the atomic bond. The active mixture then consists of charged particles, UV radiation, radicals, electric fields and - usually - high temperature. However, if the gas only has enough energy to cause the electrons to be released, but the ionized atom or molecule does not resonate, "cold plasma" is formed. Here the electrons play the main role. The cells are charged with electrons via the plasma. Cell voltage of -25 mV. A reasonably healthy adult cell has a voltage that allows it to perform its function. But it cannot divide. For this it needs at least -50 mV. If the cell becomes ill: injury, infection, cancer, the cell voltage drops to +30 mV. This corresponds to a cell pH of 6.5, a milieu in which cancer feels comfortable and its claim is already staking out and growing. But let us come back to the device of the plasma emitter. The device fascinated me, and I underwent treatment. The areas to be treated were covered

with cellulose. I was intrigued by its strange effect. I felt a slight, non-painful prick in the skin. Many small blue light spots sparkled in the cellulose and I felt a light wind rushing through the cellulose. When the radiation went over my head, I felt huge ears growing out of my head, which I could not shake off. I was so enthusiastic that I ordered the plasma emitter for my patients and myself in the Netherlands. During the treatment of my patients with this device I noticed that there was a clear "energy suction" with loud smoking over certain areas of the body. These areas corresponded with the chakras of Indian medicine. Up to this point in time I evaluated chakras as fictitious constructs, which were devised to explain equally fictitious mechanisms of energy absorption and release.

I researched and found out that the knowledge of the chakras was not only known in India or Tibet but that even cultures far away from India, such as the Mayas, Incas, Zulus, Hopis and Cherokees worked and healed with identical structures. But let us look at Indians.

Ayurveda, literally the wisdom of life, is considered the traditional Indian art of healing. It has been developed from a combination of experiential medicine and wisdom teachings. The basis of Ayurveda is formed by the physical, mental, emotional and spiritual aspects which are important for human health.

In addition to Ayurveda, other traditional teachings and philosophies exist in India. Although the teachings have the same origin and have developed in different directions, there is a continuous mutual influence and exchange of knowledge.

The knowledge of Ayurveda is based on Yoga and Tantra. Yoga itself is over 5000 years old. Yoga is based on the assumption that the life energy of the body, the prana, is concentrated in so-called chakras, in energy channels, the nadis, which are taken up and passed on and find access from the energetic body into the physical body via certain



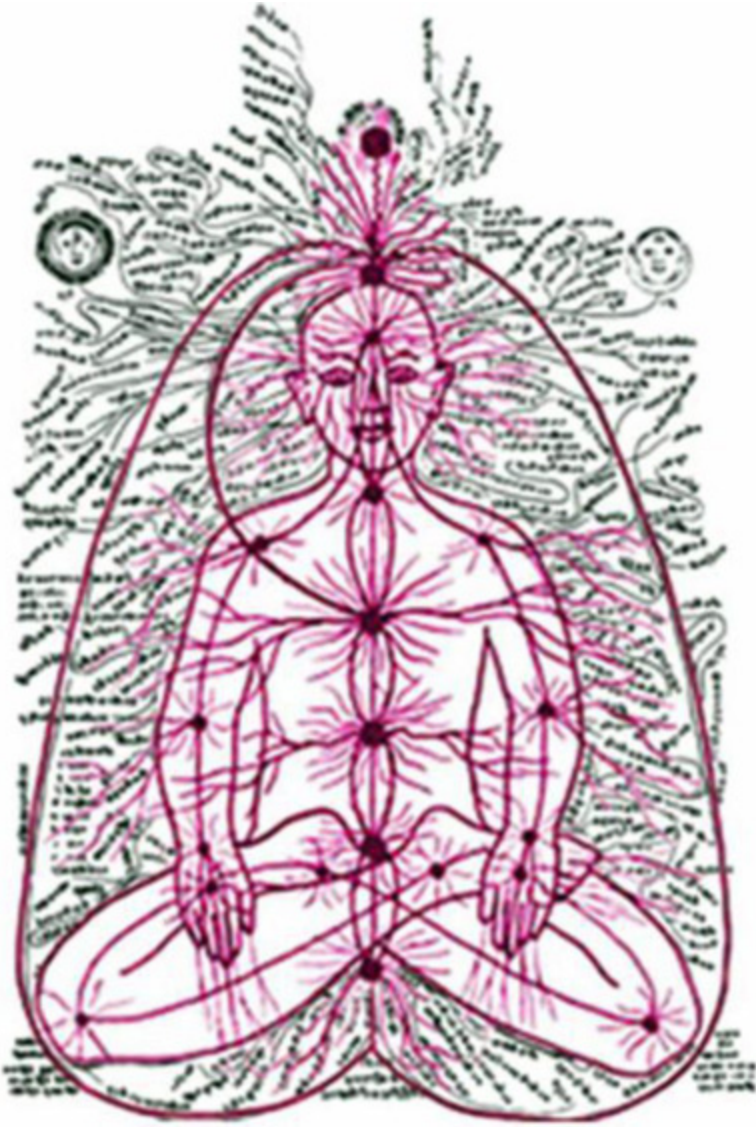
areas of the body, the marmas. Literally translated chakra means circle or wheel. More appropriate terms are whirlpools or vortexes, because the centers of the chakras open like whirlpools in a funnel shape and draw (!) or release (!) energy into themselves. The chakras are represented in Indian literature as petals of the lotus. This expresses the funnel shape of the whirlpool and the number of petals is the number of subtle channels connected to the chakra.

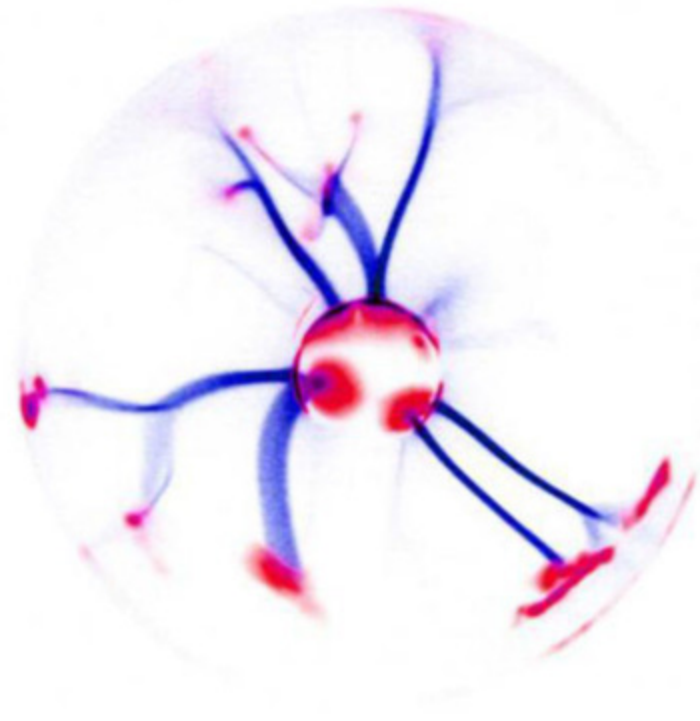
A historical diagram of the nadis is shown in the figure on page →, the center of which is overdrawn to better represent the energy channels. The channels begin at the energy center (chakra) and radiate radially through the skin.

This radiation is similar in structure to the dielectric barrier discharge in a plasma lamp (photo), i.e. the solar winds (plasmas) we know. These channels also connect the chakras below each other. The most important of these energy channels are called Ida, Pingala and Sushumna.

They pass through the body from bottom to top. Other nadis radiate radially from the chakras. The term chakra refers to energy bridges between the material body and the non-material body. They pass through the body from bottom to top. Other nadis radiate radially from the chakras. The term chakra refers to energy bridges between the material body and the matter-free body corresponding to the astral body of the human being. Seven of these chakras are considered to be the main energy centers of the human being and are, according to the chakra teachings, located along the spinal column or in the vertical central axis of the body. They are connected by a presumed energy channel (Sushumna, in the illustrations drawn as yellow axis). Through this canal also the so-called Kundalini-force shall rise. In the human body, the source of energy (Kundalini) is believed to be at the end of the spine under the sacrum. This place is called earth, root chakra or muladhara. It is unclear whether an energy source is already present here,

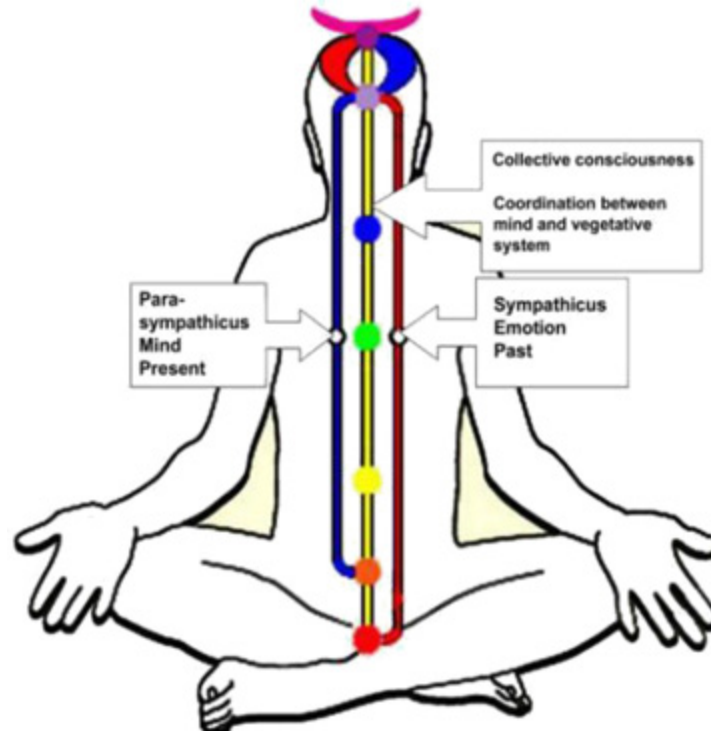
which is activated via the subconscious, or whether the source must first be charged via grounding.





Source: tantric Hinduism, tantric Buddhist Vajrayana and Yoga

Beyond the chakras connected to the body, chakras exist as energy centers not only within our physical body but also outside but almost continuously along the sushumna between this world and the next.



Functions of the three main nadis

The channel on the left side is called Ida Nadi (red) and is connected to the right side of the brain and the back of the brain. This channel supplies the left sympathetic nervous system. The channel takes care of our emotional life and processes our past. The subconscious receives information from this channel. Everything that happened in the past stays sleeping in the collective subconscious. The channel on the right side is called Pingala Nadi (blue in the picture). It supplies the left hemisphere of the brain and the frontal brain and the right sympathetic nervous system. Possibly this nadi corresponds to the vagus nerve of western medicine. On the right side is the highly conscious mind that creates our future, as Ayurveda teaches. What-ever we think about our future is stored on the right side. It also has a collective sense of what is going to happen in the future, making a connection with the higher dimensions of the 12-dimensional model probable.

Pingala and Ida cross to the other side at the level of the forehead chakra in the area of the pineal gland in the center of the limbic system (see below).

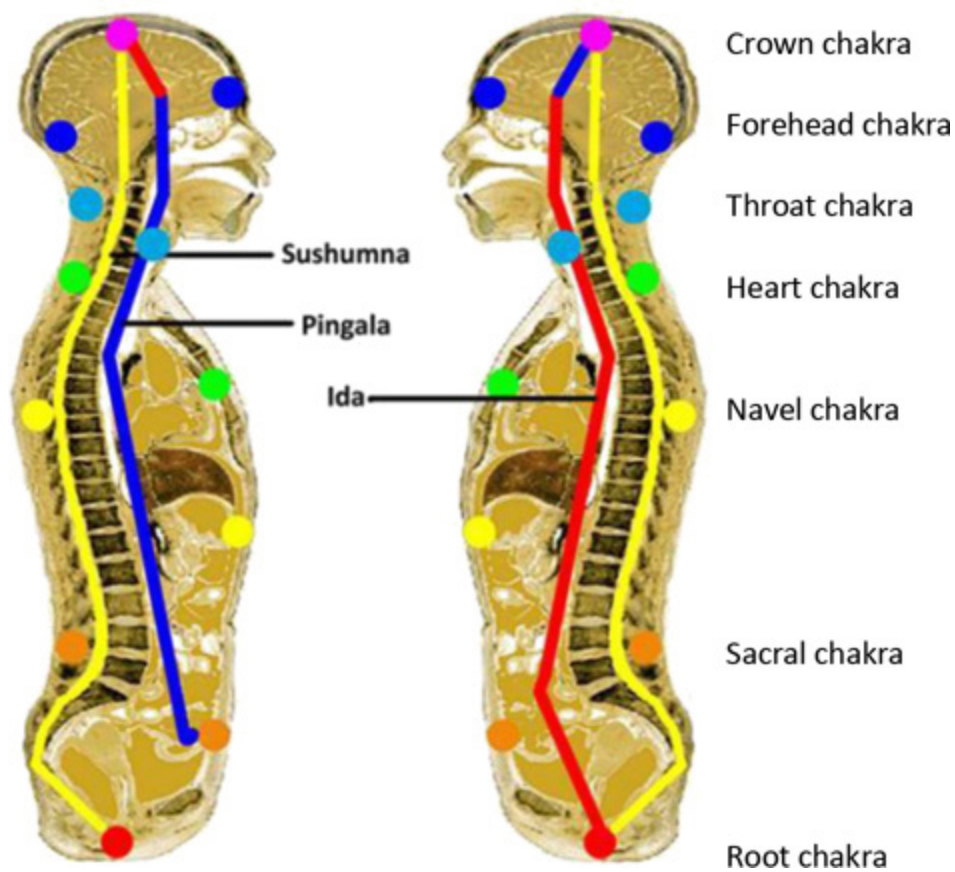
The Sushumna is the central channel for our development. Through the Sushumna we receive the collective consciousness. It ensures that all incompatible factors of our being as a whole are opened up by us. It establishes the relationship between our control of the vegetative nervous system, which in India is considered a reflection of God.

Source: [sasahajayog.tripod.com](http://sasahajayog.tripod.com)

## The Chakras

One distinguishes seven main chakras and certain minor chakras, which are located in the area of body. Only the main chakras are important for energetics. The picture shows the front and rear position of the chakras. The lowest chakra, so to speak the base of all chakras, is the **root chakra** or Muladhara. The name comes from Sanskrit, where Mula means root and Adhara means support. It is located in the pelvic floor area exactly between the anus and the genitals. Its activity is strongest in the full moon phase. The root chakra connects the person with the earth. It gives us the energy that we call the life energy. By definition, it does not correspond to the creative elemental force, the so-called Kundalini energy, which should also rest in this chakra. Kundalini energy is said to activate all other chakras. The root chakra is, transferred to our present time, the module for primal trust and maintenance of the life force. It guarantees the will to live and the existential instinct of self-preservation. One can imagine that, similar to a black hole, the energy of the earth that is meant for us is absorbed from here. The counterpart of the root chakra in the crown chakra, which also absorbs and releases

information energy. If the chakra is blocked, there is a loss of basic trust, existential fears and depression.



Front and rear exit and entry ports of the chakra energy

The chakra following the root chakra is the **sacral chakra** or Svadhisthana chakra. Svadhisthana is Sanskrit for sweetness or delightfulness. The sacral chakra is located in the front area directly above the pubic fuge. Even though in most of the traditional illustrations the chakras are only shown on the front of the body, one must assume that there are chakra equivalents in the back and back of the head. For the sacral chakra these are located above the sacrum, directly above the buttock fold. The themes of the sacral chakra are sensuality and creativity. It is considered the centre of sexuality and female energy. It ensures vitality and joy of life.