

Aibo Wu *Editor*

# Food Safety & Mycotoxins



Springer

# Food Safety & Mycotoxins

Aibo Wu

Editor

# Food Safety & Mycotoxins

 Springer

*Editor*

Aibo Wu

Shanghai Institute of Nutrition and Health,  
Shanghai Institutes for Biological Sciences,  
University of Chinese Academy of Sciences,  
Chinese Academy of Sciences  
Shanghai, China

ISBN 978-981-32-9037-2

ISBN 978-981-32-9038-9 (eBook)

<https://doi.org/10.1007/978-981-32-9038-9>

© Springer Nature Singapore Pte Ltd. 2019

This work is subject to copyright. All rights are reserved by the Publisher, whether the whole or part of the material is concerned, specifically the rights of translation, reprinting, reuse of illustrations, recitation, broadcasting, reproduction on microfilms or in any other physical way, and transmission or information storage and retrieval, electronic adaptation, computer software, or by similar or dissimilar methodology now known or hereafter developed.

The use of general descriptive names, registered names, trademarks, service marks, etc. in this publication does not imply, even in the absence of a specific statement, that such names are exempt from the relevant protective laws and regulations and therefore free for general use.

The publisher, the authors, and the editors are safe to assume that the advice and information in this book are believed to be true and accurate at the date of publication. Neither the publisher nor the authors or the editors give a warranty, express or implied, with respect to the material contained herein or for any errors or omissions that may have been made. The publisher remains neutral with regard to jurisdictional claims in published maps and institutional affiliations.

This Springer imprint is published by the registered company Springer Nature Singapore Pte Ltd.

The registered company address is: 152 Beach Road, #21-01/04 Gateway East, Singapore 189721, Singapore

# Foreword

The topic of mycotoxins concerning food safety is becoming increasingly popular in China and worldwide. In the meantime, mycotoxins are truly involved in a variety of intersecting multidisciplinary directions, such as agriculture, food, and microbiological sciences, as well as analytical chemistry and bioinformatics. Dr. Aibo Wu's "Food Safety & Mycotoxins" is an important summary of theoretical and technical advances regarding the detection, risk assessment, and control of mycotoxins contaminating the entire food chain, thus arousing food-safety problems.

This book is divided into 4 parts and 10 chapters, where it mostly covers the research aspects of mycotoxins and food safety. To be specific, the details about mycotoxins from research done in China are freshly included. The progress of various studies in 2014–2019 and prospective trends in this scope are also thoroughly discussed. Hopefully, this book will, as expected, greatly benefit the audience from research institutes, universities, or even policy makers in governmental agencies and farmers targeting practical uses.

Editor of Food Control, the former Under Secretary  
of the U.S. Department of Agriculture, USA  
Washington, DC, USA  
June 2019

Dr. Joseph Jen

# Contents

## Part I Detection

- 1 Chromogenic Platform-Based Lateral Flow Immunoassay . . . . . 3**  
Na Liu and Aibo Wu
- 2 Sample Preparation and Chromatographic Analysis . . . . . 13**  
Lan Wang, Zheng Yan, and Aibo Wu

## Part II Risk Assessment

- 3 Toxicity Evaluation Using Animal and Cell Models . . . . . 33**  
Yunxia Yang, Wenda Wu, and Aibo Wu
- 4 Risk Assessment and Profiling of Co-occurring Contaminations  
with Mycotoxins . . . . . 65**  
Lan Wang and Aibo Wu
- 5 Metabolism of Mycotoxins and the Potential Biomarkers  
for Risk Assessment . . . . . 79**  
Bingxuan Jia, Song Yu, Qinghua Wu, and Aibo Wu

## Part III Control

- 6 Origin of Mycotoxin-Producing Fungal Species . . . . . 103**  
Dianzhen Yu, Jianhua Wang, Yan Tang, Dongqiang Hu, and Aibo Wu
- 7 Enzymes for Degradation of *Fusarium* Mycotoxins . . . . . 113**  
Md Shofiul Azam, Dianzhen Yu, and Aibo Wu
- 8 Confrontation of Microbes with Mycotoxin-Producing Strains. . . . 137**  
Ye Tian and Aibo Wu

<b>9</b>	<b>Chemical and Physical Treatments for Reducing Mycotoxin Contaminations</b> .....	<b>145</b>
	Dongqiang Hu and Aibo Wu	
 <b>Part IV Summary and Prospective</b>		
<b>10</b>	<b>Summary and Prospective</b> .....	<b>165</b>
	Aibo Wu	

# Abbreviations

AFB1	Aflatoxin B1
AFB2	Aflatoxin B2
AFG1	Aflatoxin G1
AFG2	Aflatoxin G2
AFM1	Aflatoxin M1
AFM2	Aflatoxin M2
AOH	Alternariol
AME	Alternariol monomethyl ether
BEA	Beauverin
CAT	Catalase
CE	Capillary electrophoresis
CHOP	CCAAT/enhancer-binding protein homologous protein
CIT	Citrinin
DAS	Diacetoxyscirpenol
DOM	Deepoxy-deoxynivalenol
DON	Deoxynivalenol
D3G	Deoxynivalenol-3-glucoside
ESI	Electrospray ionization
FB1	Fumonisin B1
FB2	Fumonisin B2
FB3	Fumonisin B3
FB4	Fumonisin B4
GJIC	Gap junctional intercellular communication
GRP78	Glucose-regulated protein 78
GR	Glutathione reductase
GPx	Glutathione peroxidase
HFB1	Hydrolyzed fumonisin B1
HT-2	HT-2 toxin
H-SRM	High-selective reaction monitoring
HPLC	High performance liquid chromatography
JNK	C-Jun N-terminal kinase



LC-MS/MS	Liquid chromatography tandem mass spectrometry
LOD	Limit of detection
LOQ	Limit of quantitation
LLE	Liquid-liquid extraction
ME	Matrix effect
MWCNT	Multi-walled carbon nanotube
MRM	Multiple reaction monitoring
MDA	Malondialdehyde
NMR	Nuclear magnetic resonance
NIV	Nivalenol
OTA	Ochratoxin A
PA	Purity angle
PT	Purity threshold
RSD	Relative standard deviation
RSDr	Intra-day relative standard deviation
RSDR	Inter-day relative standard deviation
ROS	Reactive oxygen species
SPE	Solid phase extraction
S/N	Signal/noise
SOD	Superoxide dismutase
Sa	Sphinganine
So	Sphingosine
TCA	Tricarballic acid
T-2	T-2 toxin
TeA	Tenuazonic acid
T-SRM	Timed-selective reaction monitoring
TLC	Thin layer chromatography
TBARS	Thiobarbituric acid reactants
UHPLC	Ultra high performance liquid chromatography
UV	Ultraviolet detector
ZEN	Zearalenone
ZAN	Zearalanone
Z14G	Zearalenone-14-glucoside
Z16G	Zearalenone-16-glucoside
$\alpha$ -ZAL	$\alpha$ -Zearalanol
$\beta$ -ZAL	$\beta$ -Zearalanol
$\alpha$ -ZOL	$\alpha$ -Zearalenol
$\beta$ -ZOL	$\beta$ -Zearalenol
3ADON	3-Acetyl-deoxynivalenol
15ADON	15-Acetyl-deoxynivalenol
8-OH-dG	8-Hydroxydeoxyguanosine

# **Part I**

## **Detection**

## Chapter 1

# Chromogenic Platform-Based Lateral Flow Immunoassay



Na Liu and Aibo Wu

**Abstract** In general, several instrumental analytical methods (i.e., TLC, HPLC, CE-MS, LC-MS, MS-MS) of chromatography and rapid detection approaches of ELISA and FLA formats have been widely developed and proved to be sensitive and reliable for diverse occasions and purposes. In the recent decade, there is a still increasing interest in developing new strategic platforms which are simple, portable, disposable, and inexpensive, enabling to rapidly and simultaneously detect the target analytes in the fields of clinical diagnosis, environmental monitoring, and food safety control. Especially, those expected detection formats are extremely useful and highly welcome in remote settings, with high specificity and affinity to the target molecules showing more prospective to fulfill the above objective for these typed rapid analysis, which had been proved to be applicable for detecting clinical diseases and for monitoring environmental and food-based mycotoxins. We here propose some schematic immunoassay via a chromogenic platform-based FLA, attaining to the abovementioned expectations regarding developing ideal rapid tests of mycotoxins, especially for large-scale monitoring for industrial uses.

**Keywords** Mycotoxin · Rapid detection · Immunoassay · Lateral flow assay · Chromogenic quantitation

## 1.1 Introduction

Up to now, the most classic and long-term applicable analytical methods are commonly referring to thin layer chromatography (TLC) (Swanson et al. 1984), high-performance liquid chromatography (HPLC) (Tanaka et al. 1985), gas

---

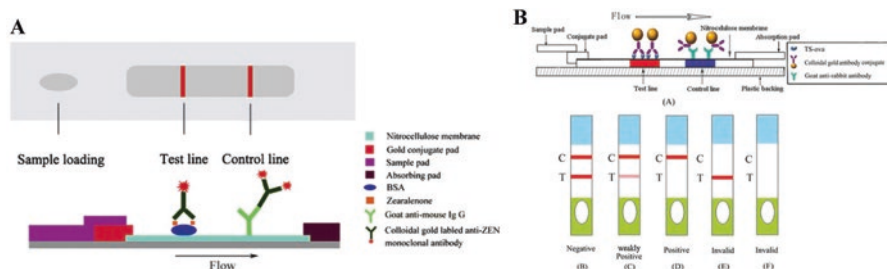
N. Liu · A. Wu (✉)

CAS Key Laboratory of Nutrition, Metabolism and Food Safety, Shanghai Institute of Nutrition and Health, Shanghai Institutes for Biological Sciences, University of Chinese Academy of Sciences, Chinese Academy of Sciences, Shanghai, People's Republic of China  
e-mail: [abwu@sibs.ac.cn](mailto:abwu@sibs.ac.cn)

chromatography (GC) (Kinani et al. 2008), liquid chromatography-tandem mass spectrometry (LC-MS/MS) (Cavaliere et al. 2005), enzyme-linked immunosorbent assay (ELISA) (Friguet et al. 1985), and lateral flow assay (Smits et al. 2001). As we are all known, there are some unavoidable drawbacks for the individual analysis. To be specific, TLC has poor separation efficiency, as well as low sensitivity and accuracy, which actually limits its application. With the availability of chromatographic instruments of HPLC and GC and linked with different detectors or MS/MS, more satisfactory performances in terms of accuracy, precision, sensitivity, and reproducibility are certainly achieved. However, due to the indispensable highly expensive equipment and strong expertise, as well as laborious procedure for sample preparation before loading, they are not appropriate for large-scale and on-site fast screening in short time. ELISA is one of the main rapid methods for screening analysis, but still in need of reader and relatively complicated sample pretreatment.

Since its initial development in the early 1980s, the paper-based lateral flow immunoassay (LFA) has gained wide applications in rapid clinical diagnosis, food safety, environmental monitoring, and agricultural field for its outstanding advantages of clearly visible result observation, user-friendly format, easy storage, and convenient transportation. The technology of lateral flow immunoassay based on the specific and sensitive antigen-antibody reaction generally provides a simpler and more economical alternative to instrumental approaches for the determination of chemical compounds, including mycotoxins, virus, and large analyses. However, the lateral flow immunoassay has achieved a broad penetration in various areas for its excellent advantages of more reproducible, more sensitive, easier to manufacture, and easier to operate in the last three decades.

To be simplified, LFA strips at least physically consisted of an absorbing pad, a gold conjugate pad, a sample pad, and a nitrocellulose membrane (Fig.1.1). The immunoassay formats can be distinguished into competitive and direct immunoassay according to the character of analytes. Competitive formats are typically applied when detecting for the small molecules, such as antibiotics and mycotoxins which would be exemplified in this paper. In this case, a positive result could be derived from the absence of a test line. In stark contrast, direct formats are always used for



**Fig. 1.1** The simplified schematic design, inner structure, and lines for reading results of the classic format of lateral flow immunoassay (LFA). (a) Different sectors on the horizontal plat of LFA; (b) the detection results read by visible lines for small molecules

testing large compounds, such as hCG. In this format for a single assay, a positive result is indicated by the presence of a test line.

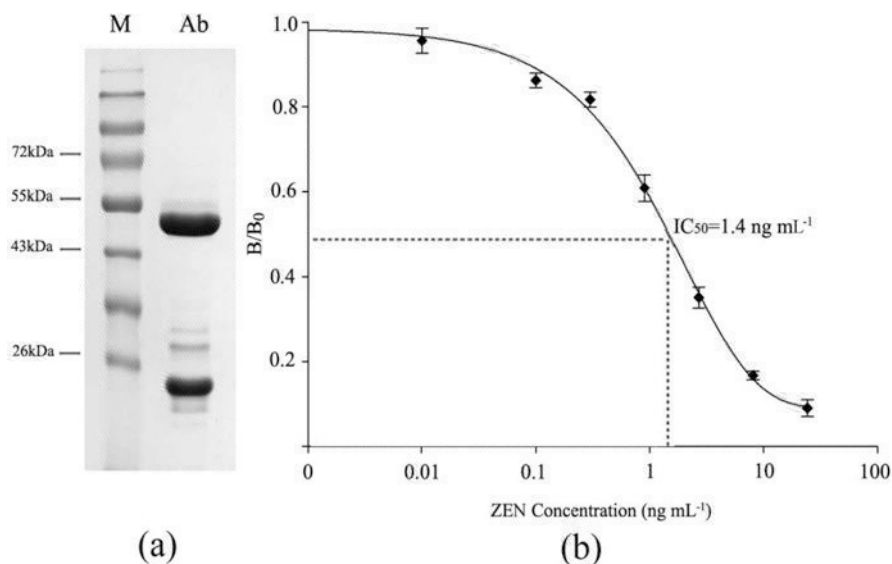
In the latest decade, LFA has been widely used for rapid detection of multiple mycotoxins as small molecules, including aflatoxin B1 and B2 (Tang et al. 2009); ochratoxin A (Lai et al. 2009; Laura et al. 2011); deoxynivalenol (Kolosova et al. 2008; Xu et al. 2010); fumonisin B1, B2, and B3 (Li et al. 2012); zearalenone (Kolosova et al. 2007; Liu et al. 2012); and T-2 and HT-2 (Molinelli et al. 2008). Nevertheless, in the previously reported cases for LFA against the target mycotoxins, they are commonly for qualitative analyses and visible reading via naked eyes. It is not well known whether the feasible and applicable candidate LFA-related approach simultaneously fulfill the needs for both rapid analysis and sensitive quantitation in this aspect. Also, when we select the suitable antibody as sensing materials for the given toxin, we have to comprise the high sensitivity, assay specificity (cross-reactivity), and wide detection range, plus the complex matrices.

To overcome the above posed difficulties, the ultimate goal of chromogenic platform-based lateral flow immunoassay is to open a novel channel based on the most ubiquitously applicable LFA; to develop one combinatorial means for rapid and sensitive quantitation of ZEN contamination, which could be commonly acceptable for a wide variety of agricultural matrices, with simple sample preparation, capability for quantitation, satisfactory detection limit, sufficient accuracy, and stability; and to meet the higher requirements when applying in practical uses on some specific occasions.

## 1.2 The Selected Antigen and Antibody

The technical basis of LFA is the interaction between antibodies and antigens. Thus the availability of antigens and antibodies with good characteristics in terms of sensitivity, affinity, specificity, and purity will consequently ease the rest of the establishment of LFA strips. Immunogenicity and purification are key factors of antigens. Indeed, impurities will give rise to relatively low-immune response and poor quality of the antibody. Antigens of the larger molecular size usually give a good immune response, while smaller ones could not. For this reason, antigens of smaller size are generally coupled to proper carrier proteins, often bovine serum albumin (BSA), ovalbumin (OVA), or keyhole limpet hemocyanin (KLH).

The availability of a new highly sensitive monoclonal antibody against the target molecule plays a key role in LFA systems, highly determining the detection sensitivity and specificity for cross-reactivities. During the whole procedure of preparing the antibody, at the first-run screening, more than 50 positive clones against the selected coating antigen (-BSA or -OVA) were firstly screened. As followed, the clones with desirable performance to recognize the antigen are selected and characterized by SDS-PAGE. As shown in Fig. 1.2a, the anti-ZEN had good purity revealed by the apparently clear heavy and light chains at 50 and 20 KD, respectively. For further analyses, the competitive indirect ELISA system was applied to test the

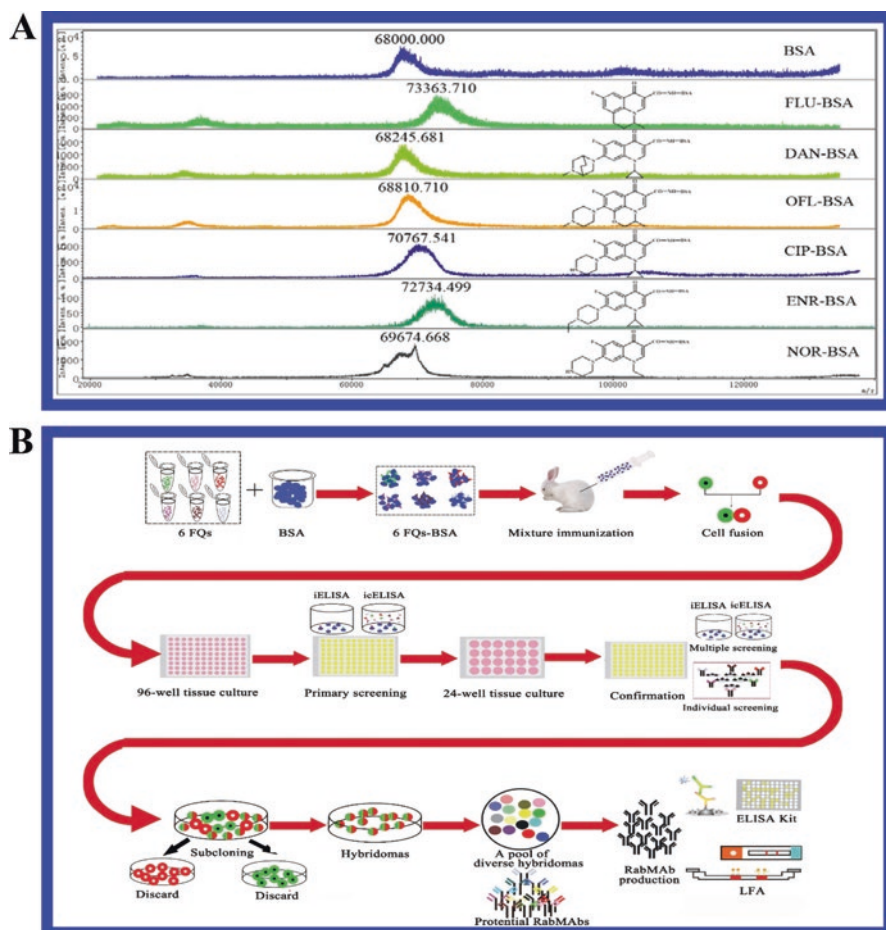


**Fig. 1.2** Characterization of the selected monoclonal antibody on SDS-PAGE (a) and the performance of the anti-ZEN using the competitive ELISA. Each point represents the mean of three replicates (b). (Liu et al. 2012)

sensitivity of more anti-ZEN, in order to get the best clone which could produce the anti-ZEN with the highest sensitivity to ZEN. Finally, as indicated in Fig. 1.2b, the IC<sub>50</sub> value was 1.4 ng mL<sup>-1</sup>, and the antibody titer was 1:256,000 (Liu et al. 2012).

Recently, for replacement of routine mouse monoclonal antibody, rabbit has been used to produce rabbit monoclonal antibody (RabMAbs) due to the bigger spleen and better responsiveness for broad classes of antigens (Yu et al. 2010; Spieker-Polet et al. 1995). Moreover, RabMAbs were considered to be superior to MAbs from mouse origin owing to various advantages such as a wider repertoire, simpler structure, higher binding affinity, more robust reproduction, and easier to be humanized (Feng et al. 2011; Rocha et al. 2008).

Combinatorial strategies for a single mixture immunization, screening, and rabbit hybridoma cell technology were described (Fig. 1.3). Six fluoroquinolones (FQs) were conjugated with bovine serum albumin and used as immunogens for subsequent immunization, while a mixture of all was injected for co-immunization. The hybridomas against the individual and multiple FQs were obtained via elaborated screening and used for the production of diverse varieties of rabbit monoclonal antibodies (RabMAbs) against the target analytes. The approach opens a new way for simultaneously obtaining functional monoclonal antibodies which are capable of recognizing both individual and multiple analytes in a single preparation circle.



**Fig.1.3** (a) MALDI-TOF-MS identifications of BSA, FLU-BSA, DAN-BSA, OFL-BSA, CIP-BSA, ENR-BSA, and NOR-BSA from the top down. (b) The scheme of simultaneous acquisition of various RabMAbs with diverse recognition functionalities against the target small molecule of fluorquinolones (FQs). (Liu et al. 2016)

### 1.3 Chromogenic Reader Designed for LFA Applications

In order to overcome the limitation of misjudgments of positive samples caused by visual difference of individuals, convenient devices were invented by recording and comparing the color intensity values between the test line and control line.

### 1.3.1 LFA Applied for the Rapid Determination

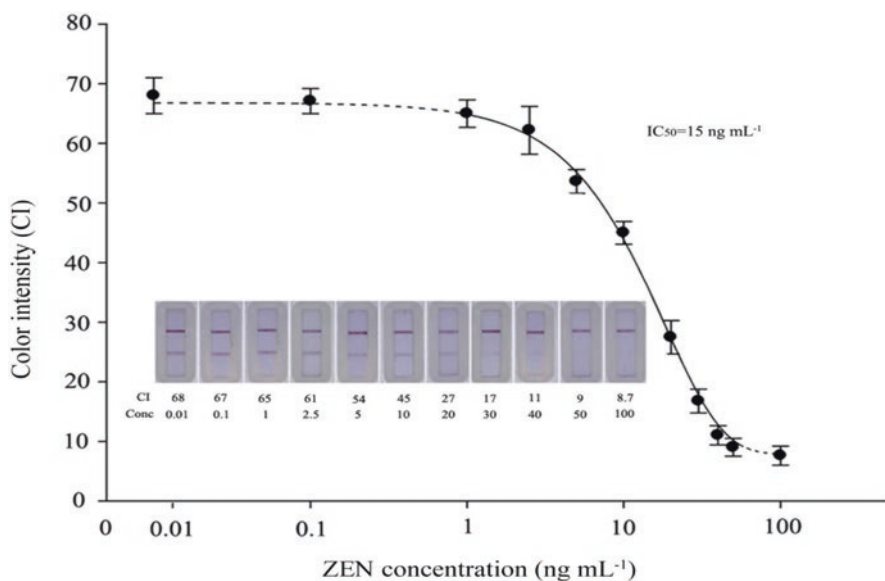
In this case, ZEN, known as an essential mycotoxin, was screened by a colloidal gold-based competitive LFA integrated with a CHR-100 chromogenic reader (Kaiwood, Taiwan, China).

Practically, to test the accuracy of the established chromogenic platform -based FLA, we select series standard solutions of ZEN of quantitation with different CI values (Fig. 1.4). The lowest level was set at 1.0 ng/mL, which was obviously lower than the limits of ZEN in Chinese standards or even worldwide regulation concentrations. Of course, the final check using real samples contained ZEN was also consistent with the results of in-parallel LC-MS/MS analyses.

With the availability of three class-specific monoclonal antibodies, a multiplex LFA platform for simultaneous multi-class qualification or semi-quantification of AFB1, ZEN, DON, and their analogs (AFs, ZENs, DONs) was established (Fig. 1.5). Moreover, the technical platform offers multiple advantages for simplicity, rapidity, sensitivity, cost-effectiveness, and time-efficiency.

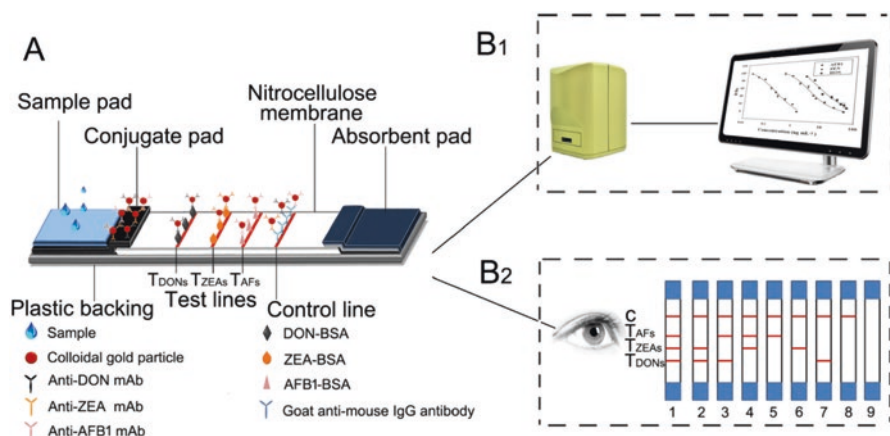
Matrix effect is one of the major problems, which significantly affects the real application of the developed rapid detection platforms. For the evaluation of matrix effects, four varieties of blank samples to the blank matrices of different matrices were prepared and pretreated.

The achieved data (not shown) indicated that the samples of wheat and baby food displayed negligible matrix effects, and the sensitivity of detection also remained at



**Fig. 1.4** LFA of a series of ZEN concentrations (0.01–100 ng mL<sup>-1</sup>) in PBS. All points are means±s.d. of four independent measurements for each concentration. (Liu et al. 2012)





**Fig.1.5** A multiplex LFA platform for qualitative and semi-quantitative determination of aflatoxin B1 (AFB1), zearalenone (ZEN), deoxynivalenol (DON), and their analogs (AFs, ZENs, DONs). (a) Scheme of the multiplex lateral flow immunoassay (LFA) for multiplex mycotoxins. (B<sub>1</sub>) Semi-quantitative analysis platform for LFA. (B<sub>2</sub>) Qualitative analysis platform for LFA. Strips 1–9 are the schematic illustrations of detection results. (1) AFs (–), ZENs (–), DONs (–); (2) AFs (+), ZENs (–), DONs (–); (3) AFs (–), ZENs (+), DONs (–); (4) AFs (–), ZENs (–), DONs (+); (5) AFs (–), ZENs (+), DONs (+); (6) AFs (+), ZENs (–), DONs (+); (7) AFs (+), ZENs (+), DONs (–); (8) AFs (+), ZENs (+), DONs (+); (9) invalid result. (Song et al. 2014)

a similar level. On this contrast, the detection of ZEN could be seriously affected by the matrices of feed and maize extracts since the curves constructed in these two matrices were different from the curve constructed in PBS. Despite the existence of the serious matrix effects, the developed test strips based on the chromogenic platform, other than the naked eyes, were still sensitive enough ( $1 \text{ ng mL}^{-1}$ ) to recognize the detectable ZEN in most cases, and the concentrations of ZEN could be accurately calculated in those complicated matrices.

### 1.3.2 Comparative Analyses of LC-MS/MS and Chromogenic LFA in Real Samples

To finally assess the accuracy of the developed chromogenic membrane-based LFA, the proper tests for its detection performance were thoroughly verified by in-parallel LC-MS/MS analyses in real samples which could contaminate the target mycotoxins.

In total, 32 food and feed samples were selected for via LC-MS/MS evaluation, where 7 positive ones were found, with the contamination levels ranging from  $14.3$  to  $131.9 \text{ } \mu\text{g kg}^{-1}$ , while the values of chromogenic LFA were  $20.4$ – $94.0 \text{ } \mu\text{g kg}^{-1}$ . According to case-by-case comparison, the data and detection results are almost identical and consistent. This is the most compelling evidence to demonstrate that the developed chromogenic platform-based LFA is fast, reliable, and sensitive, supporting its application for both qualitative measurement and quantitative analyses.