

Lecture Notes in Civil Engineering

Francesco Calvetti
Federica Cotecchia
Andrea Galli
Cristina Jommi *Editors*

Geotechnical Research for Land Protection and Development

Proceedings of CNRIG 2019

 Springer

Lecture Notes in Civil Engineering

Volume 40

Series Editors

Marco di Prisco, Politecnico di Milano, Milano, Italy

Sheng-Hong Chen, School of Water Resources and Hydropower Engineering,
Wuhan University, Wuhan, China

Ioannis Vayas, Institute of Steel Structures, National Technical University of
Athens, Athens, Greece

Sanjay Kumar Shukla, School of Engineering, Edith Cowan University, Joondalup,
WA, Australia

Anuj Sharma, Iowa State University, Ames, IA, USA

Nagesh Kumar, Department of Civil Engineering, Indian Institute of Science
Bangalore, Bangalore, Karnataka, India

Chien Ming Wang, School of Civil Engineering, The University of Queensland,
Brisbane, QLD, Australia

Lecture Notes in Civil Engineering (LNCE) publishes the latest developments in Civil Engineering - quickly, informally and in top quality. Though original research reported in proceedings and post-proceedings represents the core of LNCE, edited volumes of exceptionally high quality and interest may also be considered for publication. Volumes published in LNCE embrace all aspects and subfields of, as well as new challenges in, Civil Engineering. Topics in the series include:

- Construction and Structural Mechanics
- Building Materials
- Concrete, Steel and Timber Structures
- Geotechnical Engineering
- Earthquake Engineering
- Coastal Engineering
- Hydraulics, Hydrology and Water Resources Engineering
- Environmental Engineering and Sustainability
- Structural Health and Monitoring
- Surveying and Geographical Information Systems
- Heating, Ventilation and Air Conditioning (HVAC)
- Transportation and Traffic
- Risk Analysis
- Safety and Security

To submit a proposal or request further information, please contact the appropriate Springer Editor:

- Mr. Pierpaolo Riva at pierpaolo.riva@springer.com (Europe and Americas);
- Ms. Swati Meherishi at swati.meherishi@springer.com (India);
- Ms. Li Shen at li.shen@springer.com (China);
- Dr. Loyola D'Silva at loyola.dsilva@springer.com (S-E Asia and Australia/NZ).

Indexed by Scopus

More information about this series at <http://www.springer.com/series/15087>

Francesco Calvetti · Federica Cotecchia ·
Andrea Galli · Cristina Jommi
Editors

Geotechnical Research for Land Protection and Development

Proceedings of CNRIG 2019



Springer

Editors

Francesco Calvetti
Politecnico di Milano
Milan, Italy

Andrea Galli
Politecnico di Milano
Milan, Italy

Federica Cotecchia
Politecnico di Bari
Bari, Italy

Cristina Jommi
Politecnico di Milano
Milan, Italy

ISSN 2366-2557

Lecture Notes in Civil Engineering

ISBN 978-3-030-21358-9

<https://doi.org/10.1007/978-3-030-21359-6>

ISSN 2366-2565 (electronic)

ISBN 978-3-030-21359-6 (eBook)

© Springer Nature Switzerland AG 2020

This work is subject to copyright. All rights are reserved by the Publisher, whether the whole or part of the material is concerned, specifically the rights of translation, reprinting, reuse of illustrations, recitation, broadcasting, reproduction on microfilms or in any other physical way, and transmission or information storage and retrieval, electronic adaptation, computer software, or by similar or dissimilar methodology now known or hereafter developed.

The use of general descriptive names, registered names, trademarks, service marks, etc. in this publication does not imply, even in the absence of a specific statement, that such names are exempt from the relevant protective laws and regulations and therefore free for general use.

The publisher, the authors and the editors are safe to assume that the advice and information in this book are believed to be true and accurate at the date of publication. Neither the publisher nor the authors or the editors give a warranty, expressed or implied, with respect to the material contained herein or for any errors or omissions that may have been made. The publisher remains neutral with regard to jurisdictional claims in published maps and institutional affiliations.

This Springer imprint is published by the registered company Springer Nature Switzerland AG
The registered company address is: Gewerbestrasse 11, 6330 Cham, Switzerland

Preface

The Italian Conference of Researchers in Geotechnical Engineering—CNRIG—reached this year its seventh edition, three years after the successful conference held in Bologna in 2016. The conference was promoted by the National Group of Geotechnical Engineering (GNIG; <http://www.gnig.it/>) and hosted by Politecnico di Milano (<https://www.polimi.it/>) at the campus in Lecco (Polo Territoriale di Lecco, <http://www.polo-lecco.polimi.it/en>). The conference provides an important opportunity to share scientific advances, innovation, and application in geotechnical engineering and is becoming a traditional event for the Italian geotechnical community.

The focus chosen for the conference “*Geotechnical Research for Land Protection and Development*” faces two of the most relevant issues in civil and environmental engineering, which have a key role in modern societies and in our country in particular. The evaluation of the environmental and economic impact of strategies for the protection and the development of the built environment requires a multidisciplinary approach encompassing thorough analyses of their sustainability in the long term. Geotechnical engineering is a core discipline in this process, as it brings advanced knowledge of the physical processes occurring in the subsoil, hence, informed evaluation of the environment vulnerability and of the potential of innovative technical solutions.

As a tradition of this series of conferences, which foster lively debate on recent research advancements, the event provides the participants with a great opportunity to share up-to-date knowledge, experiences and new ideas, as well as to discuss current research projects and potential future collaborations. In this perspective, the choice of English as the official language of the conference proceedings gave the authors the opportunity to share their works beyond the national level and to reach worldwide diffusion thanks to the highly reputed series of Lecture Notes in Civil Engineering, edited by Springer.

The papers submitted for publication were peer-reviewed by the Scientific Committee and by selected members of the GNIG. The eighty-two papers accepted for publication show recent scientific advances on the topic of the conference, as well as promising ongoing research initiatives in Italy, or involving Italian

researchers. We proudly observe that more than 250 colleagues co-authored the papers, with a significant part (almost 10%) of non-Italian researchers, witnessing the good international networking of the Italian geotechnical community.

These proceedings contain two sections, following the organization of the conference. *Section 1 Protection* discusses the role of geotechnical research in the mitigation of risks for the built environment, including structures, infrastructure, strategic lifelines, deriving from earthquakes, floods, landslides or contaminant diffusion, either at ultimate or serviceability limit conditions. *Section 2 Development* is devoted to the geotechnical contribution to the construction of new structures or infrastructure, in the use of underground space, on sustainable solutions when dealing with problematic soils, with particular emphasis on their design approaches and on their interaction with the environment.

We are sincerely grateful to all the authors for their contribution to this volume and to the Scientific Committee and the members of GNIG for the high effort in reviewing all the contributions. We think this definitely represents a good example of the vitality of the Italian community of researchers in geotechnical engineering. A warm thank to the members of the organizing committee for their passionate and tireless help in providing effective (and, very often, real time!) solutions to all the countless needs of the organization of such a prestigious event as CNRIG 2019.

We hope the content of this volume to be of valuable and long-time lasting interest to researchers in geotechnical engineering.

July 2019

Francesco Calvetti
Federica Cotecchia
Andrea Galli
Cristina Jommi

Organization

Scientific Committee

Stefano Aversa	Università degli Studi di Napoli “Parthenope”; President of GNIG
Monica Barbero	Politecnico di Torino
Francesco Calvetti	Politecnico di Milano
Giuseppe Cardile	Università Mediterranea di Reggio Calabria
Manuela Cecconi	Università degli Studi di Perugia
Federica Cotecchia	Politecnico di Bari
Andrea Galli	Politecnico di Milano
Guido Gottardi	Università di Bologna
Cristina Jommi	Politecnico di Milano
Alessandra Nocilla	Università degli Studi di Brescia
Massimo Ramondini	Università degli Studi di Napoli Federico II
Roberto Vassallo	Università degli Studi della Basilicata

Organizing Committee at Politecnico di Milano

Andrea Galli
Cristina Jommi
Katia Boschi
Luca Flessati
Viviana Mangraviti
Pietro Marveglio
Irene Redaelli
Giulia Scelsi

Under the Patronage of



Provincia di Lecco



Comune di Lecco

Contents

Protection

Influence of Numerosity and Distribution of Piezometric Data on the Performance of a Warning Model for Weather-Induced Landslides in Norway	3
G. Pecoraro and M. Calvello	
Temporal Evolution of the Force Exerted by Dry Granular Masses Impacting on Rigid Sheltering Structures	13
I. Redaelli, C. di Prisco, and F. Calvetti	
Planning and Monitoring of Mitigation Measures in a Landslide-Affected Area Through Numerical Modelling, Conventional and Satellite Data	23
Donato Infante, Diego Di Martire, Pierluigi Confuorto, and Massimo Ramondini	
A Method to Evaluate Debris Flow Triggering and Propagation by Numerical Analyses	33
M. Ciurleo, M. C. Mandaglio, N. Moraci, and A. Pitasi	
Multi-parameter Vulnerability Analysis of Settlement-Affected Masonry Buildings with Shallow/Piled Foundations: Case Studies in The Netherlands	42
G. Nicodemo, D. Peduto, M. Korff, and S. Ferlisi	
Damage to Masonry Buildings Interacting with Slow-Moving Landslides: A Numerical Analysis	52
G. Nicodemo, S. Ferlisi, D. Peduto, L. Aceto, and G. Gullà	
Probabilistic vs. Deterministic Approach in Landslide Triggering Prediction at Large-scale	62
Diana Salciarini, Evelina Volpe, and Elisabetta Cattoni	

Two Control Works to Counteract the Inception of Debris Avalanches	71
S. Cuomo and S. Petrosino	
Prediction of Slope Movement Effects on Churches for the Development of a Fragility Curve Approach	82
R. Berardi and L. Cambiaggi	
A Simplified Methodology for the Assessment of the Seismic Risk Associated with Small Earth Dams	92
R. M. Cosentini, F. Passeri, and S. Foti	
Simplified Charts to Evaluate Settlements from Seismic Compression in Dry Loose Sand	101
S. Fabozzi, A. Porchia, T. Fierro, E. Peronace, A. Pagliaroli, and M. Moscatelli	
Assessment of Factors Contributing to Levees Stability	111
D. Lo Presti, S. Stacul, P. P. Capilleri, and N. Squeglia	
Management of Transport Infrastructures: A Procedure to Assess the Landslide Risk	121
V. Lentini, F. Castelli, and G. Distefano	
Geotechnical Aspects in the Assessment of Stability Conditions of the Volumni Hypogeum in Perugia	129
Manuela Cecconi, Alessia Vecchietti, Vincenzo Pane, Giacomo Russo, and Corrado Cencetti	
Monitoring of Rain-Induced Landslides for the Territory Protection: The AD-VITAM Project	138
Rossella Bovolenta, Roberto Passalacqua, Bianca Federici, and Domenico Sguerso	
Ground Response Analyses for a Zoned Earth Dam Site in Southern Italy	148
Gianluca Regina, Roberto Cairo, and Paolo Zimmaro	
Digital Terrestrial Stereo-Photogrammetry for Monitoring Landslide Displacements: A Case Study in Recoaro Terme (VI)	155
Lorenzo Brezzi, Fabio Gabrieli, Simonetta Cola, Gloria Lorenzetti, Nicolò Spiezia, Alberto Bisson, and Michele Allegrini	
Long-Term Monitoring of Landslide Displacements and Damage at Latronico, Italian Apennines	164
C. Di Maio, G. Fornaro, D. Gioia, D. Reale, M. Schiattarella, and R. Vassallo	

Hydrological Characterization of Silty Volcanic Slopes and Physically-Based Early Warning Systems	174
Lucia Coppola, Luca Pagano, Alfredo Reder, and Guido Rianna	
Analysis of the Effects of Seasonal Pore Pressure Variations on the Slope Stability Through Advanced Numerical Modelling	184
Gaetano Elia, Gaetano Falcone, Federica Cotecchia, and Mohamed Rouainia	
Displacement Evolution of a Large Landslide in a Highly Fissured Clay	195
Marco Rosone, Maurizio Ziccarelli, and Alessio Ferrari	
Deep Movements in Clayey Slopes Relating to Climate: Modeling for Early Warning System Design	205
Vito Tagarelli and Federica Cotecchia	
A Landslide in Overconsolidated Clays that Has Involved an Important Road of Access to an Internal Mountain Town	215
Maurizio Ziccarelli, Antonio Casella, and Giovanni Sapienza	
Numerical Analysis of Stacked Geo-Tubes	225
P. Pavanello, D. Tognolo, P. Carrubba, and L. Frigo	
Evaluation of Site Amplification for the Seismic Protection of a Strategic District in Naples	235
Juan M. Barbagelata, Giorgio A. Alleanza, Anna Chiaradonna, Anna d'Onofrio, and Francesco Silvestri	
Mechanised Tunnel Excavation Through an Instrumented Site in Rome: Class A Predictions and Monitoring Data	245
Nunzio Losacco and Giulia M. B. Viggiani	
Assessing Future Variations in Landslide Occurrence Due to Climate Changes: Insights from an Italian Test Case	255
Guido Rianna, Alfredo Reder, Luca Pagano, and Paola Mercogliano	
Back-Analysis of the Post-Failure Stage of a Landslide Using the Material Point Method	265
Antonello Troncone, Enrico Conte, and Luigi Pugliese	
Run-Out of Landslides Caused by Excess Pore Water Pressure Along the Slip Surface	273
Enrico Conte, Luigi Pugliese, and Antonello Troncone	
Prediction of the Mobility of Landslides Activated by Rainfall Using a Simplified Approach	281
Enrico Conte, Antonello Troncone, Antonio Donato, and Luigi Pugliese	

Pore Water Regime in Active Earthflows and Effects on Slope Movements	289
L. Comegna, J. De Rosa, C. Di Maio, L. Picarelli, M. Pirone, and G. Urciuoli	
Post-earthquake Resilience of a Room and Pillar Rock Cavity in Naples	299
F. de Silva and A. Scotto di Santolo	
Feasibility of Foothill Barriers to Reduce the Propagation of Debris Avalanches	309
S. Moretti, S. Cuomo, and S. Aversa	
The Contribution of Spaceborne SAR Data in Linear Infrastructures Monitoring Activities	318
D. Infante, D. Di Martire, A. Scotto Di Santolo, D. Calcaterra, and M. Ramondini	
On the Reactivation of Sand Boils Near the Po River Major Embankments	328
María Fernanda García Martínez, Guido Gottardi, Michela Marchi, and Laura Tonni	
An Early Warning System for Debris Flows and Snow Avalanches	338
F. Antolini, S. Aiassa, and M. Barla	
Liquefaction Hazard Evaluation for a 3rd Level Microzonation Study in a High Seismicity Area of Central Italy	348
J. Facciorusso, C. Madiati, G. Vannucchi, E. Gargini, and M. Baglione	
An Integrated Model for the Assessment of Subsidence Risk in the Area of Bologna (Italy)	358
Rose Line Spacagna, Giuseppe Modoni, and Michele Saroli	
On the Stability of a Fully Instrumented River Embankment Under Transient Conditions	369
C. G. Gragnano, I. Bertolini, I. Rocchi, and G. Gottardi	
Deterministic and Probabilistic Analyses of Slopes Reinforced with Vegetation	379
M. Pisano, G. Cardile, and A. Ricciardi	
Mechanical and Physical Effects of Electroosmotic Dewatering of Clayey Soils	387
S. Gargano, S. Lirer, and A. Flora	
The Use of Seismic Records for Updating the Geotechnical Model for a Site in San Giuliano di Puglia (Italy)	397
Tony Fierro, Luciano Mignelli, Giuseppe Scasserra, Alessandro Pagliaroli, and Filippo Santucci de Magistris	

The “Strange” Case of the Scorciavacche Failure	407
G. Scarpelli, G. Scozzari, A. Vita, and D. Segato	
A Macroelement Approach for the Stability Assessment of Trees	417
G. Dattola, M. O. Ciantia, A. Galli, L. Blyth, X. Zhang, J. A. Knapet, R. Castellanza, C. Sala, and A. K. Leung	
Development	
Punching Tests on Deformable Facing Structures: Numerical Analyses and Mechanical Interpretation	429
Katia Boschi, Claudio di Prisco, Luca Flessati, Andrea Galli, and Marianna Tomasin	
A Predictive Model for Pullout Bearing Resistance of Geogrids Embedded in a Granular Soil	438
G. Cardile, M. Pisano, and N. Moraci	
The Effect of Densification on Pieve di Cento Sands in Cyclic Simple Shear Tests	446
L. Mele, S. Lirer, and A. Flora	
Evolution of Local Strains Under Uniaxial Compression in an Anisotropic Gypsum Sample	454
Chiara Caselle, Gessica Umili, Sabrina Bonetto, Daniele Costanzo, and Anna Maria Ferrero	
On the Effect of Grading and Degree of Saturation on Rockfill Volumetric Deformation	462
Roberta Ventini, Alessandro Flora, Stefania Lirer, and Claudio Mancuso	
DEM Simulation of Frozen Granular Soils with High Ice Content	472
Guodong Wang and Francesco Calvetti	
The Effects of Structure on the One Dimensional Compression Behaviour of a Porous Calcarene	481
M. Zimbardo, A. Nocilla, M. R. Coop, L. Ercoli, B. Megna, and M. C. Mistretta	
Artificial Intelligence to Predict Maximum Surface Settlements Induced by Mechanized Tunnelling	490
Mohsen Ramezanshirazi, Diego Sebastiani, and Salvatore Miliziano	
Enhancement of Design Methodologies of Anchored Mesh Systems Using the Discrete Element Method	500
A. Pol, F. Gabrieli, and N. Mazzon	

Seismic Soil-Pile-Structure Interaction. Theoretical Results and Observations on Pile Group Effects 509
Roberto Cairo, Giampaolo Francese, Rossana Moraca, and Federica Aloe

Rock-Engineering Design and NTC2018: Some Open Questions 519
F. Vagnon, S. M. R. Bonetto, A. M. Ferrero, M. R. Migliazza, and G. Umili

Geotechnical Hazards Caused by Freezing-Thawing Processes Induced by Borehole Heat Exchangers 529
S. Cola, G. Dalla Santa, and A. Galgaro

Site Specific Seismic Performance of Circular Tunnels in Dry Sand . . . 537
F. de Silva, S. Fabozzi, N. Nikitas, E. Bilotta, and R. Fuentes

Experimental Study on a Three-Dimensional Passive Earth Pressure Coefficient in Cohesionless Soil 545
P. Capilleri, E. Motta, M. Todaro, and G. Biondi

Optimization of the Geometry of Monitoring Devices for Contaminant Detection in Cement-Bentonite Cutoff Walls 555
Giulia Scelsi, Gabriele Della Vecchia, Claudio di Prisco, Guido Musso, and Gianluigi Sanetti

A Coupled Study of Soil-Abutment-Superstructure Interaction 565
Davide Noè Gorini and Luigi Callisto

Performance of a Deep Excavation for the New Line C of Rome Underground 575
Luca Masini, Sebastiano Rampello, and Eliano Romani

Preliminary Numerical Simulation of Centrifuge Tests on Tunnel-Building Interaction in Liquefiable Soil 583
G. Miranda, V. Nappa, and E. Bilotta

Exploring Static Instability Behavior of Sand-Fines Mixtures Based on Different State Variables 592
Daniela D. Porcino and Giuseppe Tomasello

Site Response Analyses for Post-Earthquake Reconstruction in the Area of L'Aquila: Influence of the Input Subsoil Model 600
Paola Monaco

The Analysis of Weak Rock Block Behaviour by an Advanced Constitutive Model 611
A. Amorosi, F. Rollo, and L. Gagliardini

Application of a Statistical Approach for the Assessment of Design Block in Rockfall: A Case Study in Sesia Valley (Northern Italy)	621
M. Barbero, M. Castelli, G. Cavagnino, V. De Biagi, C. Scavia, and G. Vallero	
Field Tests on Screw Micropiles Under Axial Loading.	630
Alex Sanzeni, Emanuele G. Danesi, and Pier Luigi Subitoni	
A Simplified Approach for the Estimation of Settlements of Earth Embankments on Piled Foundations	640
Claudio di Prisco, Luca Flessati, Andrea Galli, and Viviana Mangraviti	
Geogrids as a Remedial Measure for Seismic-Liquefaction Induced Uplift of Onshore Buried Gas Pipelines	649
Massimina Castiglia, Filippo Santucci de Magistris, Salvatore Morgante, and Junichi Koseki	
FEM 3D Analysis of Settlements Induced by Shallow Tunnels in Coarse-Grained Soils	658
F. Schiena, A. Lembo Fazio, and A. Graziani	
A New Methodology for the Rock-Burst Assessment During Tunnel Construction.	668
A. Voza, L. Valguamera, S. Fuoco, G. Ascari, D. Boldini, and D. Buttafoco	
Effects of Thickeners Polymers Used in Tunnelling on the Physical and Mechanical Properties of Fine-Grained Soils.	678
D. Sebastiani, A. de Lillis, A. Di Giulio, and S. Miliziano	
Time Evolution of the Height of Dredged Mud in a Containment Facility: A Comparison Between Monitoring Data and Numerical Predictions	686
A. de Lillis, G. M. Rotisciani, and S. Miliziano	
Influence of Soil Heterogeneity on the Selection of Input Motion for 1D Seismic Response Analysis	694
F. Genovese, D. Aliberti, G. Biondi, and E. Cascone	
Hydro-Mechanical Behaviour of a Sand-Bentonite Mixture for the Confinement of Nuclear Wastes	705
A. Ferrari, D. Manca, and L. Laloui	
Numerical Study of Laterally Loaded Pile in Unsaturated Soils.	713
L. M. Lalicata, G. M. Rotisciani, A. Desideri, F. Casini, and L. Thorel	
Use of Alkali-Activated Fly Ashes for Soil Treatment	723
Enza Vitale, Giacomo Russo, and Dimitri Deneele	

Lessons Learnt from the SS 106 Jonica Highway Construction Works	734
Paolo Ruggeri, Vivienne Marianne Esther Fruzzetti, and Giuseppe Scarpelli	
Lightweight Cemented Soils: Mix Design, Production and Control	743
Domenico De Sarno, Enza Vitale, Marco Valerio Nicotera, Raffaele Papa, Giacomo Russo, and Gianfranco Urciuoli	
Soil Stabilization Against Water Erosion via Calcite Precipitation by Plant-Derived Urease	753
Alessia Cuccurullo, Domenico Gallipoli, Agostino Walter Bruno, Charles Augarde, Paul Hughes, and Christian La Borderie	
Insights into the Behaviour of Energy Piles Under Different Head Constraints and Thermal Loads	763
Donatella Sterpi	
Bearing Capacity of Foundations Under Highly Eccentric Loads	773
Luca de Sanctis, Rosa M. S. Maiorano, Valeria Nappa, and Stefano Aversa	
Author Index	785

Protection



Influence of Numerosity and Distribution of Piezometric Data on the Performance of a Warning Model for Weather-Induced Landslides in Norway

G. Pecoraro^(✉) and M. Calvello

Department of Civil Engineering, University of Salerno,
Via Giovanni Paolo II 132, Fisciano, Italy
gpecoraro@unisa.it

Abstract. Territorial landslide early warning systems (Te-LEWS) are widely applied worldwide to deal with weather-induced landslides over wide areas, typically through the prediction and forecasting of meteorological parameters. However, meteorological monitoring alone does not allow to take into account critical soil conditions controlling the triggering process. Depending on local conditions, landslides may be triggered in response to a large variety of weather events. Therefore, the integration of geotechnical monitoring data within warning models for weather-induced landslides at regional scale can provide supplemental information useful to determine the likelihood of a given weather event actually producing landslides.

A methodology designed to integrate widespread meteorological monitoring and pore water pressure measurements is herein applied within 30 hydrological basins highly susceptible to weather-induced landslides in Norway. The correctness of the predictions in relation to different network configurations of the piezometers is evaluated through a series of parametric analyses. The results of a first application of the proposed warning model are also presented and discussed. This study should be considered as a first attempt to define the conditions for adopting an economically sustainable and technically reliable geotechnical monitoring strategy for predicting the conditions leading to the triggering of weather-induced landslides over wide areas.

Keywords: LEWS · Warning model · Monitoring · Pore water pressure · Parametric analysis

1 Introduction

Recent literature contributions described many landslide early warning systems deployed to address weather-induced landslides both at regional and slope scale all around the world (Pecoraro et al. 2019b; Piciullo et al. 2018). At regional scale, the warning models are mainly based on the prediction and monitoring of hydrometeorological variables in order to assess the probability of landslide occurrence (Segoni et al. 2018). However, the mechanisms that lead to slope instability are typically influenced by a series of local factors (e.g., soil properties), thus a direct relation

between rainfall and landslide initiation cannot be always determined (Staley et al. 2012). Baum and Godt (2010) stated that geotechnical monitoring could provide useful indication in areas where soil moisture exhibits strong seasonal variation. Stähli et al. (2015) proposed to combine local measurements of landslide precursors with model predictions at catchment scale. Recently, Calvello (2017) pointed out that local observations may provide fruitful indications on the local conditions of the study area.

This study aims at integrating local pore water pressure measurements collected at local scale and widespread meteorological monitoring. The proposed methodology is applied to 30 hydrological basins in Norway, highly susceptible to weather-induced landslides. Firstly, three parametric analyses are conducted in order to determine the most appropriate time period for the trend analyses and to assess the influence of the network configurations of the piezometers on the results. Then, the warning events issued applying the warning model employed within the national LEWS operational in Norway (Piciullo et al. 2017) are further scrutinized considering the local observations.

2 Study Areas and Available Datasets

The Norwegian hydrological basins have been considered appropriate territorial units for which pore water pressure observations may provide meaningful information for analyses at catchment scale. The national catchment database REGINE shows that the Norwegian water system is divided into 22,545 basins, defined as polygons covering the whole country. The subdivisions of the water system areas form a hierarchy, thus the drainage area of each territorial unit may vary by orders of magnitude, ranging from less than 10^{-4} km² for basins draining a well-defined small torrent to more than 10^4 km² for large river basins. Among them, 30 hydrological basins have been identified as potentially useful for the analyses according to two main criteria: the occurrence of shallow landslides in loose soils and the availability of a relevant number of locations with pore water pressure measurements. The majority of them (16 out of 30) are distributed along the western coast of Norway; the remaining 14 basins are situated in the south-eastern part of the country.

The data on landslide occurrences were retrieved from the national landslide database (www.skrednett.no), which contains more than 60,000 entries (represented by point locations) covering the whole country. A total of 125 weather-induced landslides in soils occurred in the test areas in the period of analysis, i.e., from January 2013 to June 2017. 58 of these records are characterized as landslides in soil (46.40%), not otherwise specified due to lack of further documentation; 45 (36.00%) are classified as debris flows, debris avalanches or mudslides; 13 (10.40%) are reported as soil slides in artificial slopes (cuts and fillings along road and railway lines); 5 (4.00%) are slush flows and the remaining 4 (3.20%) are clay slides. In the majority of the basins (25 out of 30), the number of landslides varies between 3 and 5, yet four basins were interested by 6 landslides and the remaining one by 7 landslides.

The pore water pressure measurements were collected at local scale analysing data from 41,706 boreholes installed by NGI for a variety of geotechnical projects throughout Norway not specifically aimed at early warning purposes, such as: geotechnical site characterization of soils; slope stability analysis; efficiency evaluation

of surface drainage works; monitoring of road and railway embankments. The piezometers considered representative of conditions which led to the triggering of the landslides have been selected taking into account their spatial proximity to the landslides that occurred in the period of analysis, and the installation in the shallower soil layers or in areas characterized by the presence of loose sediments. It is worth mentioning that data from only electric piezometers have been considered, as they provide longer and more reliable data series. Pore water pressure measurements recorded in the period of analysis within the test areas were derived from 240 boreholes, whose numerosity varies between 7 and 14.

3 Methodology

In a preliminary phase, pore water pressure trends have been derived from the piezometric data available within each territorial unit in the period of analysis. As the records are typically characterized by a significant short-term variability, they have been statistically processed in order to smooth the short-term fluctuations and to make the identification of potential trends possible. To this aim, the simple moving average of the recorded pore water pressures at a given day (u_i) has been calculated, over the number of days of a specified time period (n), as follows:

$$u_i = \sum_{k=i-n+1}^i \frac{p_k}{n} \quad (1)$$

where p_k is the pore water pressure recorded at day k . Then, two indicators of pore water pressure variations have been defined, as follows:

$$\Delta u_i = u_i - u_{i-n}. \quad (2)$$

$$\Delta u_i^* = \frac{u_i}{u_{imax}}. \quad (3)$$

where Δu_i is the difference between the simple moving averages calculated considering a length equal to n days and referring to days i and $i - n$; and Δu_i^* is the same difference normalized by the maximum difference observed in the dataset, Δu_{imax} .

Successively, three parametric analyses have been conducted in order to assess the correlations between the day of occurrence of the landslides and the pore water pressure trends in relation to different operative conditions within each territorial unit (Fig. 1a, b). The first parametric analysis has been carried out in order to identify the most appropriate time period (n) for calculating the simple moving average differences, Δu_i . Moreover, the influence of the network configurations of the piezometers (i.e., numerosity of the piezometers and average distance from the landslides) on the reliability of the predictions has been evaluated.

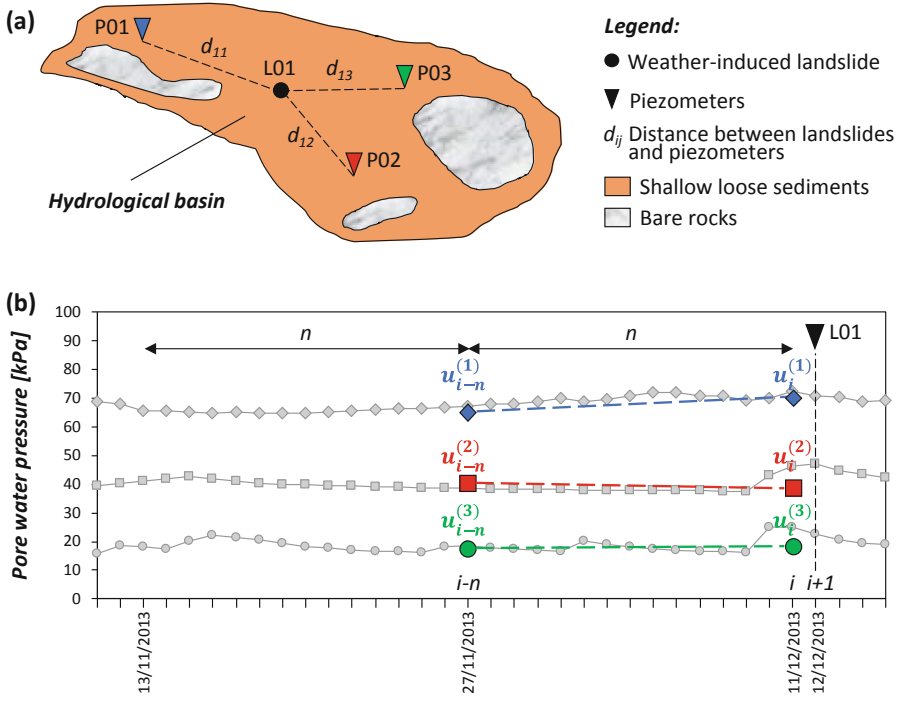


Fig. 1. Example of application of the proposed methodology to the test areas: identification of weather-induced landslides and available piezometers (a) and pore water pressure trend analyses (b)

Finally, the pore water pressure observations collected at local scale have been used to assess the warning events issued by applying the regional model to one of the selected territorial units, following the 2-step procedure proposed by Pecoraro et al. (2019). In the first step, the differences between the simple moving averages referring to days i and $i - n$ are evaluated. In case they do not show a clear trend, the warning level issued by the regional model (WL_0) is maintained. Otherwise, a second step is performed wherein the normalized simple moving average differences are compared with pre-defined thresholds. Three final outcomes are possible: the confirmation of the same warning level issued by the regional warning model, an increase of the warning level, a decrease of the warning level. No more than two warning level variations are allowed.

4 Parametric Analyses

4.1 Time Periods

In the first parametric analysis, the possible trends of Δu_i have been evaluated over time periods (n) of 1, 2, 3, 4, 5, 6, 7, and 14 days. Short time periods have been considered because pore water pressure variations possibly triggering a landslide in shallow loose sediments are typically recorded few days before a landslide event. Besides, a short-term moving average allows identifying possible significant trends without any significant temporal lag between the original and the average data series caused by longer window lengths. The moving average trends have been evaluated considering the 125 weather-induced landslides that occurred in the period of analysis. It is worth highlighting that in these cases an uptrend, i.e. an increase of pore water pressure moving averages, can be considered as a correct indicator, whereas a downtrend has to be considered an incorrect indicator. “No trend” indicates that the moving average differences do not show a clear trend. Figure 2 highlights an overall good correlation between the landslides and the pore water pressure observations, as more than 50% of the events are associated to uptrends for all the considered time periods. The percent difference between correct and incorrect indicators increases with the length of the time period. Indeed, Δu_{14} shows the highest value of this difference (61%), as 77% are correct indicators (96 out of 125), 16% are incorrect indicators (20), and the remaining 7% (9) do not show any trend. Therefore, Δu_{14} can be considered the most appropriate indicator to adopt for the successive analyses.

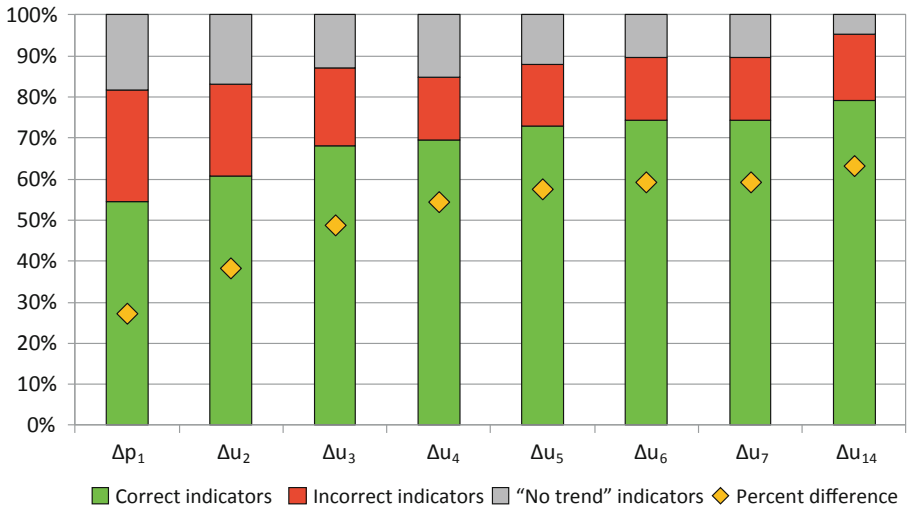


Fig. 2. Influence on the correctness of the results of the time period used for the calculation of the simple moving average differences (Δu_i)

4.2 Numerosity

The second parametric analysis has been conducted in order to assess the influence of the numerosity of the piezometric locations on the correctness of the results. The number of piezometers available for each landslide that occurred in the period of analysis varies between 2 and 7. They have been grouped in four numerosity classes (2, 3, 4 and 5 or more piezometers) so that a reasonable number of data is available in each class for supporting the analyses. The moving average trends have been evaluated in order to identify the uptrends (correct indicators) associated to the landslides for each class, following the same procedure adopted for the first parametric analysis. Figure 3 highlights that the majority of the landslides are associated to uptrends, regardless to the numerosity of piezometric data. Yet, the correctness of the predictions increases passing from 2 (66%) to 5 or more piezometers (88%). Moreover, the upper class is characterized by the highest percent difference between correct and incorrect indicators (82%), as only in 2 cases out of 17 there is not coherence between landslides and piezometric data. This seems to suggest a positive correlation between the reliability of the predictions and the numerosity of piezometric data.



Fig. 3. Influence on the correctness of the results of the numerosity of piezometers

4.3 Average Distance

The third parametric analysis has been carried out in order to assess whether and how the reliability of the results depends on the average distance between the networks of piezometers and the landslides. Indeed, the significance of piezometric data collected at a certain distance from the landslide is a crucial issue to investigate before using them for early warning purposes. To this aim, the networks of piezometers have been grouped in four rather homogenous classes depending on their average distance from the landslides. Following the same criterion already adopted for the two other parametric analyses, the moving average trends have been evaluated in order to assess the number of correct indicators (i.e., uptrends) for each class (Fig. 4). As expected, the networks of piezometers installed in the proximity of the landslides (i.e., at a distance shorter than 500 m) provide the best results (83%) and only in 3 cases the occurrence

of a landslide is not characterized by an uptrend. However, the percent differences between correct and incorrect indicators observed for the four defined classes do not show significant variations, especially for average distances longer than 500 m. These results seem to suggest that the piezometric data available in each territorial unit can provide meaningful information for early warning purposes at this scale of analysis, regardless of their distance from the landslides.

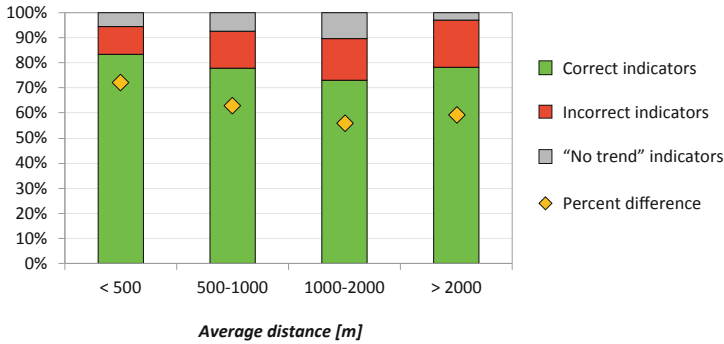


Fig. 4. Influence on the correctness of the results of the average distance between landslides and networks of piezometers

5 Application to One Territorial Unit

The warning model proposed by Pecoraro et al. (2019a) and aimed at integrating the regional gridded data employed by the national LEWS operational in Norway and the pore water pressure trends defined herein has been applied to the Glommavassdraget basin (Fig. 5a). The study area is situated in the south-eastern part of Norway and covers an area of about 27 km². The soil profile consists of loose sediments prone to landslides (59%), bare rocks (40%), and materials not prone to landslides (1%). From January 2013 to June 2017 (i.e. the period of analysis) the study area experienced 7 landslides; 5 of them can be classified as weather-induced landslides in soils. A total of 8 piezometers installed in the study area provided pore water pressure data for the analyses.

Firstly, the average values of the hydrometeorological variables calculated over the 42 grid-cells covering the basin have been compared with the four warning levels adopted by the national LEWS (Krøgli et al. 2018). This allowed identifying the days with warnings as well as defining, in these cases, the level of the warning (Fig. 5b). Table 1a displays that all the 5 landslides that occurred in the period of analysis were detected by the regional model: in 4 cases the model was in level 2 and in one case in level 4. On the other hand, 57 warnings have been issued when landslides did not occur: the majority being level 2 “moderate warnings” (44 events), and the rest of them being level 3 “severe warnings” (13 events).

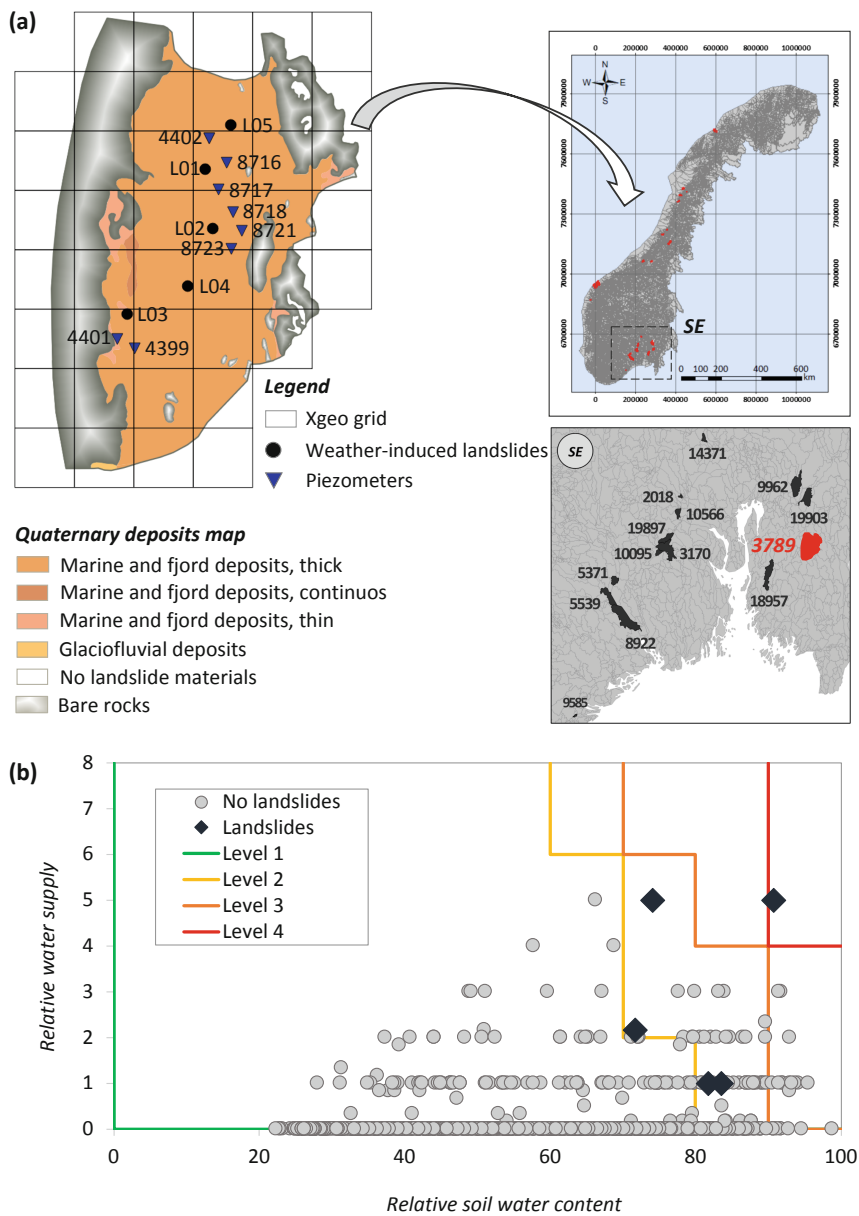


Fig. 5. Quaternary deposit map, landslides and piezometers in the test area, i.e. Glommavassdraget basin (a) and results obtained applying the regional warning model employed in the national LEWS (b)

Successively, the 62 warning events issued applying the regional model have been further scrutinized considering the local observations available in the study area, following the methodology described in Sect. 3. Table 1b reports that two landslide events originally classified as level 2 “moderate warnings” (WL_2) have been raised to level 3 “severe warnings” (WL_3) and another one to level 4 “very severe warnings” (WL_4). The other two landslide events have been confirmed at level 2 and level 4, respectively. Moreover, looking at the warning events issued when landslides did not occur, two of the 13 “severe warnings” false alerts have been decreased to “moderate warnings”, while 22 of the 44 “moderate warnings” false alerts have been no longer classified as alerts.

Table 1. Comparison between warning models employing widespread meteorological monitoring alone (a) and integrating local observations (b)

a)	WL ₁	WL ₂	WL ₃	WL ₄
Landslides	0	4	0	1
No landslides	1580	44	13	0

b)	WL ₁	WL ₂	WL ₃	WL ₄
Landslides	0	1	2	2
No landslides	1604	22	11	0

6 Conclusions

In the present study, the additional contribution of local pore water pressure measurements for early warning purposes in Norway was analyzed and discussed. Firstly, pore water pressure trends were calculated and their correlation with the landslides that occurred in the period of analysis was studied by means of three parametric analyses considering different time periods and network configurations of the piezometers. The first analysis highlighted that the best results were achieved considering the longest time periods ($n = 14$ days). The second analysis showed that the numerosity of the piezometric data available in each territorial unit partly affects the reliability of the results. On the other hand, the distance does not influence significantly the correctness of the predictions. This seems to suggest that at a catchment scale landslides are triggered by triggering conditions (i.e. rise of pore water pressure) widespread within the territorial unit.

An application of the warning model integrating widespread monitoring data and pore water pressure measurements collected at local scale was also carried out considering one of the territorial units. The preliminary results achieved herein highlight a huge potential for the local geotechnical observations to complement widespread meteorological monitoring. Indeed, local observations can provide meaningful information for territorial early warning systems addressing weather-induced landslides although, of course, the parameters to be included within the model need to be properly selected depending on the types of landslides under surveillance.

Acknowledgements. This study was mainly carried out during a research period of Gaetano Pecoraro at the Norwegian Geotechnical Institute in *WP3.4-Early warning systems* in the context of the innovation centre *Klima 2050-Risk reduction through climate adaptation of buildings and infrastructure* (www.klima2050.no).

References

- Baum RL, Godt JW (2010) Early warning of rainfall-induced shallow landslides and debris flows in the USA. *Landslides* 7(3):259–272
- Calvello M (2017) Early warning strategies to cope with landslide risk. *Riv It Geotec* 51(2): 63–91
- Krøgli IK, Devoli G, Colletuille H, Sund M, Boje S, Engen IK (2018) The Norwegian forecasting and warning service for rainfall-and snowmelt-induced landslides. *Nat Hazards Earth Syst Sci* 18:1427–1450
- Pecoraro, G, Calvello, M, Cepeda, JM (2019a) Using local monitoring data for regional forecasting of weather-induced landslides in Norway. In: 17th European Conference on Soil Mechanics and Geotechnical Engineering, Sep. 1–6, Reykjavik, Iceland
- Pecoraro, G, Calvello, M, Piciullo, L (2019b) Monitoring strategies for local landslide early warning systems. *Landslides* 16(2):213–231
- Piciullo L, Calvello M, Cepeda JM (2018) Territorial early warning systems for rainfall-induced landslides. *Earth Sci Rev* 179:228–247
- Piciullo L, Dahl M-P, Devoli G, Colletuille H, Calvello M (2017) Adapting the EDuMaP method to test the performance of the Norwegian early warning system for weather-induced landslides. *Nat Hazards Earth Syst Sci* 17:817–831
- Segoni S, Piciullo L, Gariano SL (2018) A review of the recent literature on rainfall thresholds for landslide occurrence. *Landslides* 15:1483–1501
- Stähli M, Sättele M, Huggel C, McArdell BW, Lehmann P, van Herwijnen A, Berne A, Schleiss M, Ferrari A, Kos A, Or D, Springman SM (2015) Monitoring and prediction in early warning systems for rapid mass movements. *Nat Hazards Earth Syst Sci* 15:905–917
- Staley DM, Kean JW, Cannon SH, Schmidt KM, Laber JL (2012) Objective definition of rainfall intensity–duration thresholds for the initiation of post-fire debris flows in southern California. *Landslides* 10(5):547–562



Temporal Evolution of the Force Exerted by Dry Granular Masses Impacting on Rigid Sheltering Structures

I. Redaelli¹(✉), C. di Prisco¹, and F. Calvetti²

¹ Dipartimento di Ingegneria Civile e Ambientale (DICA),
Politecnico di Milano, Piazza Leonardo da Vinci 32, 20133 Milan, Italy
irene.redaelli@polimi.it

² Dipartimento di Architettura, Ingegneria delle Costruzioni e Ambiente
Costruito (DABC), Piazza Leonardo da Vinci 32, 20133 Milan, Italy

Abstract. In this paper, the Discrete Element approach is employed to study the evolution with time of the impact force exerted by dry granular flows on rigid obstacles and to better understand the impact mechanism. The dry granular mass is initially positioned in front of the wall with an assigned uniform velocity and porosity and the evolution with time of the impact force is evaluated. In particular, the influence of both mass initial porosity and front inclination on the impact force evolution has been investigated.

From a design point of view, the results integrate the formula that was previously introduced by the authors for the maximum impact force, by adding information about its time evolution.

Keywords: Impact · DEM · Porosity · Impulse · Granular materials

1 Introduction

The evaluation of the impact force exerted by granular flows on rigid obstacles is of fundamental importance for the design of sheltering structures.

In most of the practical approaches and standard, a pseudo-static approach is employed: the maximum impact force is estimated by using empirical formulas and it is applied to the barrier as a quasi-static force. A number of formulas are available in the literature for the maximum impact force evaluation; most of them are based on oversimplifying hypotheses about the behavior of the granular material and require the use of empirical correcting factors which vary in a wide range, making the practical use of these approaches rather arbitrary (Arattano and Franzi 2003; Armanini 1997; Bugnion et al. 2012; Hubl et al. 2009; Scotton and Deganutti 1997).

Considering the dynamic nature of impacts, the maximum impact force is not sufficient to design protection works and the impulse value should be used in design.

For this reason, the study of the time evolution of the impact force is of fundamental importance.

In this study, the Discrete Element Method (DEM) (Cundall and Strack 1979) has been employed to investigate the role of both initial porosity and front inclination on

the impact force evolution. In fact, porosity represents a major parameter determining the type of granular flow. When the initial porosity is sufficiently low, the material behaves like a dense granular flow and force chains can develop within the mass. On the contrary for very large values of initial porosity, the material behaves like a granular gas and particles interact through inelastic collisions (Jaeger et al. 1996; Redaelli et al. 2016). This different nature of the material, changes completely the impact phenomenon and the impact force evolution.

By employing the DEM, since the macroscopic behavior of the assembly derives directly from micromechanical parameters and state parameters, it is possible to take into account the local variation of porosity and internal microstructure deriving from compaction of the material during the impact process, the dependence of the material response on packing and on strain rate, as well as the dissipation mechanisms characterizing the granular flow (frictional force chains and inelastic collisions) (Ceccato et al. 2017).

The main goal of the authors is in fact to propose a design approach for the sheltering structures by integrating the formula previously introduced by the authors for the maximum impact force with the information about the time evolution of the impact force, necessary to compute the impulse and for dynamic design of sheltering structure.

2 Numerical Model

The DEM numerical simulations are performed by employing the commercial software PFC3D 4.0 (Itasca, 2011). The model is analogous to that described in Calvetti et al. (2017). The model geometry is plotted Fig. 1, whereas the model mechanical properties are listed in Table 1. In order to reduce the computational cost, the triggering and propagation phases have not been simulated and the impacting mass has been generated just in front of the vertical wall with a prescribed geometry and initial conditions (Calvetti et al. 2017). The dry impacting mass is represented as an assembly of poly-disperse spherical particles of unit weight γ_g . The particle size distribution is uniform and is defined by assigning the average grain diameter D and the ratio between the maximum and the minimum particle diameter D_{\max}/D_{\min} . The contact force is computed by employing a linear model along the normal direction and a linear model in series with a slider obeying the Coulomb failure criterion, along the tangential direction. The contact law is thus defined by specifying the values of normal and shear contact stiffnesses, k_n/D and k_s/D , respectively, and the interparticle friction coefficient μ_g (see Table 1). In order to reproduce the response of a real granular material with non-spherical particles, particles rotation is not allowed (Calvetti 2008). The geometry of the impacting mass is characterized by the length $L = 15$ m and height $h = 3$ m. The front of the sliding mass is assumed to be planar and inclined of an angle α . Different front angles ranging between 40° and 90° have been considered. In order to impose plain strain conditions, the flow is confined between two smooth lateral walls. The flow width is equal to $8D$, in order to avoid boundary effects (Calvetti et al. 2017; Ceccato et al. 2017). The mass flows on a horizontal wall with friction μ_b . The obstacle is modelled as a vertical rigid and massless wall of height $H = 6$ m and friction coefficient μ_w .

At the instant of time just before the impact, the mass is characterized by a horizontal velocity $u_0 = 8$ m/s and porosity n_0 ranging between 0.4 and 0.65. When